



Artisan Technology Group is your source for quality new and certified-used/pre-owned equipment

- FAST SHIPPING AND DELIVERY
- TENS OF THOUSANDS OF IN-STOCK ITEMS
- EQUIPMENT DEMOS
- HUNDREDS OF MANUFACTURERS SUPPORTED
- LEASING/MONTHLY RENTALS
- ITAR CERTIFIED SECURE ASSET SOLUTIONS

SERVICE CENTER REPAIRS

Experienced engineers and technicians on staff at our full-service, in-house repair center

*InstraView*SM REMOTE INSPECTION

Remotely inspect equipment before purchasing with our interactive website at www.instraview.com ↗

WE BUY USED EQUIPMENT

Sell your excess, underutilized, and idle used equipment. We also offer credit for buy-backs and trade-ins. www.artisanng.com/WeBuyEquipment ↗

LOOKING FOR MORE INFORMATION?

Visit us on the web at www.artisanng.com ↗ for more information on price quotations, drivers, technical specifications, manuals, and documentation

Contact us: (888) 88-SOURCE | sales@artisanng.com | www.artisanng.com



Ensemble CL Controller and Linear Digital Drive



Description **Specifications** **Dimensions** **Ordering Information**

Design Features

- Network drives through a high-speed serial interface to coordinate up to ten axes of motion
- Coordinate motion using up to five independent tasks
- Drive and control linear or rotary brushless, DC brush servo, and micro-stepping motors
- Command various motion types including: point-to-point, linear and circular interpolation, electronic gearing, and velocity profiling
- Program in AeroBasic, Microsoft .NET (C#, VB.NET, C, and Managed C++), LabVIEW, and MATLAB
- Remotely command drives over Ethernet, USB, or RS-232 with an ASCII interface available for both Windows and non-Windows programs (including Linux)
- Diagnose, tune, and program through an advanced Windows-based interface
- NRTL safety certification, CE approved
- Fully compatible with EPICS set of software tools and applications, making Ensemble ideal for use in synchrotron and general laboratory facilities
- Allen-Bradley EtherNet/IP interface provides full integration with the Ensemble; program the Ensemble directly from RSLogix 5000
- Output power range of 10 A peak with ± 10 to ± 80 VDC bus

The Ensemble™ is Aerotech's next-generation, multi-axis controller for moderate- to high-performance applications. Versatility, power, and affordability make the Ensemble ideal for applications from basic laboratory experimentation and general-purpose positioning to advanced OEM systems.

Versatile, Flexible, Stand-Alone Multi-Axis Control

Network multiple Ensemble HLe/CL/ML combination controllers/drives for up to ten axes of coordinated motion, and seamlessly mix and match amplifiers (linear and PWM) and motor types (brush, brushless, and stepper) within the same positioning system using a common programming and control platform. High-accuracy linear motor air-bearing stages or lower precision stages with servo or stepper motors can be controlled from the linear Ensemble series. Each controller/drive can be reconfigured to accept different motors and feedback devices, allowing customers to adapt to changing system needs. Optional on-board encoder interpolation provides programmable axis resolution, including the ability to change interpolation (multiplication) values through software.

Powerful and Intuitive Programming

Monitor and control all aspects of the positioning system, no matter how complex, through the Ensemble GUI Integrated Development Environment software. An Autotuning utility minimizes startup time by allowing easy optimization of motion axes. Functional programs that can be modified and used in customer applications are included in the online Help. Pre-coded LabVIEW® VIs, AeroBasic™ programming functionality, MATLAB® library, .NET tools for C#, VB.NET and managed C++ or C make the Ensemble even easier to use. See the Ensemble Control home page for detailed information on software capabilities and ordering options.

Advanced DSP Control

The processing power of a 225 MHz double precision, floating-point DSP supplies exceptional performance in a variety of applications including point-to-point motion, linear and circular interpolation, multi-axis error correction, 2D error mapping, direct commutation of linear and rotary brushless servomotors, and on-board servo autotuning. High-speed interrupts and data logging capabilities provide a real-time link to external systems. The Ensemble HLe/CL/ML controller/drive combination also offers highspeed position latching capability and single-, dual-, or triple-axis PSO (Position Synchronized Output), depending on model. Whether the requirement is simple point-to-point motion or complex velocity-profiled contours with output on the fly, Ensemble ensures peak performance for critical operations.

Enhancing a Legacy of Success

Ensemble carries forward a legacy of success that originated in Aerotech's A3200 and Soloist™ controllers. Enhanced capabilities make it an obvious choice for aggressive motion control applications. The Ensemble motion control architecture builds upon the Soloist™ intuitive graphical user interface, while improving multi-axis control through advanced features.

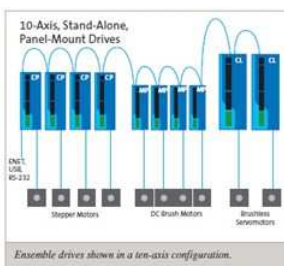
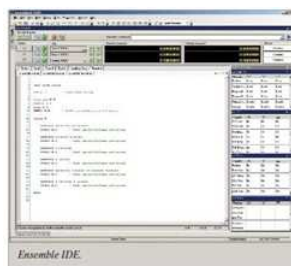
Allen-Bradley Interface

Combine proven PLC with proven motion control for easier integration, startup, and maintenance of medium- and high-end automation projects. The Aerotech EtherNet/IP™ interface enables AB PLCs (MicroLogix, CompactLogix™, or ControlLogix) to be integrated directly with the Ensemble. Motion can

be directly programmed in the RSLogix 5000 environment or separate programs can be written on the controller and triggered from the AB PLC. Aerotech has two interfaces: ASCII and Register. Choose the PLC, motion controller, and interface that best fits your application needs.

EPICS Drivers

Each Ensemble installation includes full compatibility with the EPICS open source distributed control system. EPICS is used worldwide at leading light source (synchrotron) facilities and other government laboratories, allowing Ensemble to seamlessly integrate into applications at all major research institutions.



Ensemble CL Specifications

| Ensemble CL | Units | |
|---|-----------------|--|
| Motor Style | | Brush, Brushless, Stepper, Voice Coil |
| Motor Supply | VAC | 56 (center tapped transformer; two 28 VAC windings); Max |
| Control Supply ⁽¹⁾ | VAC | 85-240; 50/60 Hz |
| Bus Voltage ⁽²⁾ | VDC | ±40 |
| Peak Output Current (1 sec) ^(3,4) | A _{pk} | 10 |
| Continuous Output Current ^(3,4) | A _{pk} | 5 |
| Digital Inputs | | 6 Optically Isolated (2 High Speed) |
| Digital Outputs | | 4 Optically Isolated |
| Analog Inputs | | One 16-bit Differential; ±10 V |
| Analog Outputs | | One 16-bit SingleEnded |
| Dedicated Axis I/O on Feedback Connector | | Three Limit Inputs (CW, CCW, Home); Three Hall Effect Inputs (A, B, C); Three High-Speed differential Inputs (sin, cos, mkr for encoder); Motor Over-Temperature Input |
| Dedicated I/O on Auxiliary Feedback Connector | | sin, cos, mkr for Aux Enc; Aux Enc can be used for PSO Output |
| I/O Expansion Board ⁽⁵⁾ | | 16/16 Digital Opto-Isolated; 1 Analog In (±10 V, 12-bit Differential); 1 Analog Out (±10 V, 12-bit) |
| High Speed Data Capture | | Yes (50 ns Latency) |
| Automatic Brake Control | | Optional |
| Emergency Stop Sense Input (ESTOP) ⁽⁶⁾ | | Standard; 24 V Opto-Isolated |
| Position Synchronized Output (PSO) | | Single Axis Only |
| Can Output Multiplied Encoder | | No |
| Can Output Square Wave Encoder | | Yes |
| Primary Encoder Input Frequency | | 32 MHz Square Wave Standard; 400 kHz Sine Wave (MXU) |
| Secondary Encoder Input Frequency | | 32 MHz Square Wave |
| Encoder Multiplication | | Up to x8192 (MXU) |
| Resolver Interface | | N/A |
| Internal Shunt Resistor | | N/A |
| External Shunt | | N/A |
| Ethernet | | N/A |
| USB | | No |
| RS-232 | | Yes |
| FireWire | | No |
| Fieldbus | | Modbus TCP; Ethernet/IP |
| Current Loop Update Rate | kHz | 20 |
| Servo Loop Update Rate | kHz | 10 |
| Power Amplifier Bandwidth | kHz | Selectable Through Software |
| Minimum Load Inductance | mH | 0 |
| Operating Temperature | °C | 0 to 50 |
| Storage Temperature | °C | -30 to 85 |
| Weight | kg (lb) | 3.54 (7.8) |

1. "Keep Alive" supply.

2. Output voltage is load dependent.

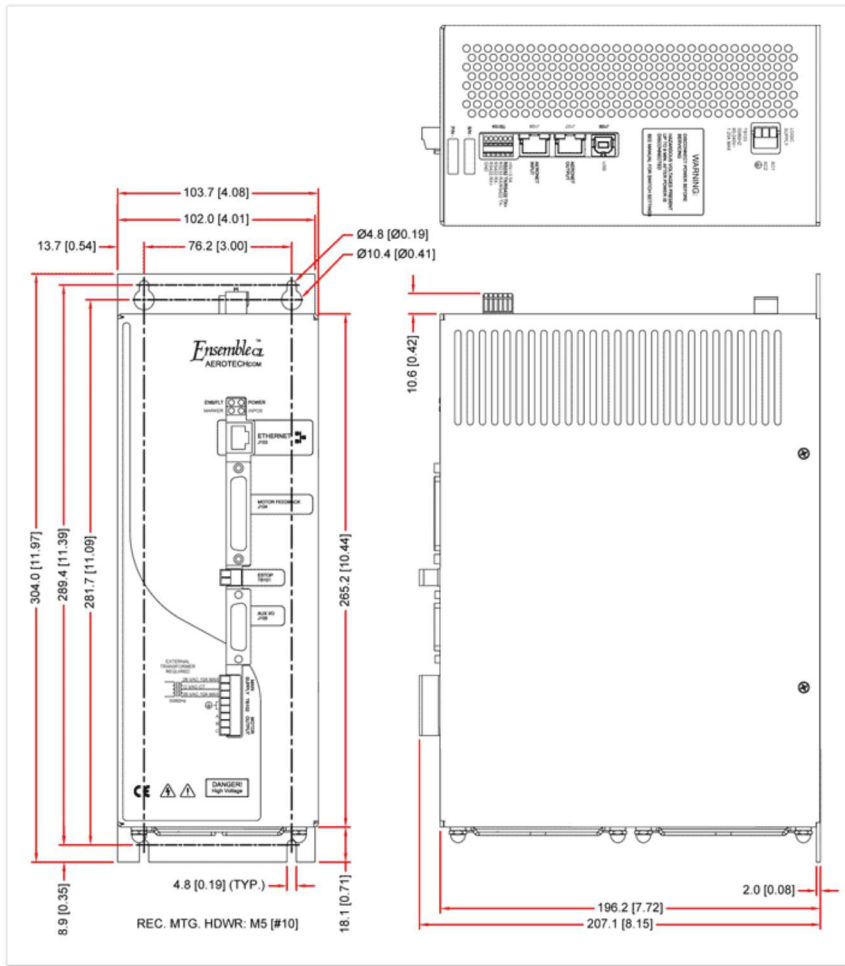
3. Peak value of the sine wave; rms current for AC motors is 0.707 * Apk.

4. Load dependent.

5. Requires IO option.

6. Requires external relay to remove motor supply power.

Ensemble CL



Ordering Example

| | | | |
|--------------|---------|-------|----------|
| Ensemble HLe | 20-40-X | -ENET | RDP1-10K |
|--------------|---------|-------|----------|

Ordering Options

| Base | Output Current | Control Option | Resolver Options |
|--------------|-------------------------------|--|--|
| Ensemble HLe | 10-40-X 20-40-X 10-80-X | -IO -DUALPSO -TRIPLEPSO -PSOPTO2 -PSOPTO3 -PSOPTO4 -PSOAH -MXH -ENET | RDP1-10K RDP1-7.5K RDP1-5K RDP2-10K RDP2-7.5K RDP2-5K |
| Ensemble CL | 10-40 | -IO -MXU | |
| Ensemble ML | 10-40 | -IO -MXU -MXH | |

Ensemble HLe/CL/ML Discrete Drives

| Option | Description |
|---------------------|--|
| ENSEMBLE HLe10-40-x | 10 A peak, 5 A continuous, ± 40 VDC bus, auxiliary 115/230 VAC input to power logic circuitry; supports brushless, brush, and stepper motors; includes: 4 opto-isolated digital inputs (sinking or sourcing), 2 high-speed inputs, 4 opto-isolated digital outputs (sinking only), 1 16-bit analog output, 1 16-bit differential analog input, single-axis PSO capability, 2 quadrature encoder input channels, ESTOP sense input |
| ENSEMBLE HLe20-40-x | 20 A peak, 10 A continuous, ± 40 VDC bus, auxiliary 115/230 VAC input to power logic circuitry; supports brushless, brush, and stepper motors; includes: 4 opto-isolated digital inputs (sinking or sourcing), 2 high-speed inputs, 4 opto-isolated digital outputs (sinking only), 1 16-bit analog output, 1 16-bit differential analog input, single-axis PSO capability, 2 quadrature encoder input channels, ESTOP sense input |
| ENSEMBLE HLe10-80-x | 10 A peak, 5 A continuous, ± 80 VDC bus, auxiliary 115/230 VAC input to power logic circuitry; supports brushless, brush, and stepper motors; includes: 4 opto-isolated digital inputs (sinking or sourcing), 2 high-speed inputs, 4 opto-isolated digital outputs (sinking only), 1 16-bit analog output, 1 16-bit differential analog input, single-axis PSO capability, 2 quadrature encoder input channels, ESTOP sense input |
| ENSEMBLE CL10-40 | 10 A peak, 5 A continuous, 115 VAC logic input power linear digital controller and drive; 56 VAC bus power; includes 4 digital outputs, 6 digital inputs, 1 analog output, 1 analog input, 1 24-VDC 1-amp solid-state brake relay; includes axis calibration, PSO, camming, absolute encoder support |
| ENSEMBLE ML | 10 A peak, 5 A continuous, 10-80 VDC input, linear digital controller and drive with Ethernet interface; supports brush, brushless, and stepper motors; 2 quadrature encoder input channels, ESTOP sense input, and 24-80 VDC logic power input; includes axis calibration and camming |

Options (Ensemble CL and ML)

| Option | Description |
|--------------|-------------------------------------|
| BRAKE24-2 | 24 volt power supply for brake; 2 A |
| ENET-CAT6-10 | 1.0 m (3.2 ft) Ethernet cable |
| ENET-CAT6-20 | 2.0 m (6.6 ft) Ethernet cable |
| ENET-CAT6-30 | 3.0 m (9.8 ft) Ethernet cable |
| ENET-CAT6-45 | 4.5 m (14.7 ft) Ethernet cable |

Options (Ensemble CL)

| Option | Description |
|--------------|--|
| -I/O | Expansion board with 16 opto-isolated inputs (sinking or sourcing), 16 outputs (sinking or sourcing), 1 12-bit analog input, 1 16-bit analog output, and one 24 VDC 1-amp mechanical relay |
| -MXU | Programmable encoder multiplier up to x1024; no real-time output |
| -ETHERNET/IP | ODVA certified EtherNet/IP™ module for Allen-Bradley PLC with two APIs – ASCII and Register-to-Register |

Software Ordering Example

| | | | | |
|-------------|---------|--------------------------|-----------------|-----------------|
| ENSEMBLE-MC | MACHINE | DYNAMIC CONTROLS TOOLBOX | MOTION DESIGNER | MAINTENANCE-1-0 |
|-------------|---------|--------------------------|-----------------|-----------------|

Software Ordering Options

| Software | License | Controller Options | Motion Composer (MC) Options | Maintenance |
|----------|---------|--------------------|------------------------------|-------------|
|----------|---------|--------------------|------------------------------|-------------|

| Software | License | Controller Options | Motion Composer (MC) Options | Maintenance |
|-------------|----------|---|------------------------------|------------------|
| ENSEMBLE-MC | -MACHINE | -FIVE AXIS CONTOURING -DYNAMIC CONTROLS TOOLBOX -ENHANCED THROUGHPUT MODULE -ENHANCED TRACKING CONTROL | -MOTION DESIGNER -LABVIEW | -MAINTENANCE-y-m |

Ensemble Software

| Option | Description |
|-------------|---|
| ENSEMBLE-MC | <p>ENSEMBLE: Full installation of Ensemble controller and selected software components on a new system. Full part number includes software options listed below. Pricing is summation of selected software products. Maintenance (software update) included in price for one year from date of purchase.</p> <p>MOTION COMPOSER STANDARD: Includes the Integrated Development Environment, Scope, SystemDiagnostics, and System Maintenance. Ensemble Motion Composer is intended for deployment on desktop or industrial PCs with a minimum Intel Pentium 4 processor, 512 MB RAM, Windows® XP or Windows® Vista Business (without SP1 installed). A full list of PC requirements and recommendations is available at www.aerotech.com. Includes the following software options:</p> |

License

| Option | Description |
|----------|--|
| -MACHINE | Provides the ability to write, compile, execute, debug programs in AeroBasic; full access to .NET 2.0 and C Library; access full diagnostics, fault, and status information; access and set I/O, registers, and variables; collect, analyze, and save data; view files from machine for analysis and record keeping; connect PC to machine through Ethernet TCP/IP or USB; upgrades can be installed (firmware or controller) using Loader; includes Ensemble-MC Standard; Note: The price of the first MACHINE license is included in the hardware price. The list price of the MACHINE license is used for multiple license copies and/or computing the Maintenance Price. |

Controller Options

| Option | Description |
|-----------------------------|--|
| -FIVE AXIS CONTOURING | More than 4 axes of coordinated motion with a single motion command |
| -DYNAMIC CONTROLS TOOLBOX | Includes Harmonic Cancellation |
| -ENHANCED THROUGHPUT MODULE | Includes setup and monitoring screens of the ETM module; included in the price of the hardware modules sold separately |
| -ENHANCED TRACKING CONTROL | Enhanced tracking control for reduced dynamic following error and settling times |

System Options

| Option | Description |
|--------------|---|
| -ETHERNET/IP | ODVA certified EtherNet/IP™ module provides full integration with Allen Bradley PLC and programmable from RSLogix™. Module has two APIs: ASCII and Register-to-Register |

Motion Composer (MC) Options

| Option | Description |
|------------------|--|
| -MOTION DESIGNER | The Motion Designer is an add-on software component to the Digital Scope that provides the ability to create, import, run, and evaluate motion profiles (trajectories) |
| -LABVIEW | Includes LABVIEW 8.2 VI samples |

Maintenance

| Option | Description |
|--------------|--|
| -MAINTENANCE | First year of maintenance is included with the initial purchase; additional years can be purchased |

Aerotech is a motion control, positioning and automation systems manufacturer.

© 1994–2014 Aerotech Inc. All Rights Reserved.

| Contact Sales | Service & Support | Careers

Aerotech, Inc. | 101 Zeta Drive Pittsburgh, PA 15238-2897 | (412) 963-7470 | aerotech@aerotech.com



Artisan Technology Group is your source for quality new and certified-used/pre-owned equipment

- FAST SHIPPING AND DELIVERY
- TENS OF THOUSANDS OF IN-STOCK ITEMS
- EQUIPMENT DEMOS
- HUNDREDS OF MANUFACTURERS SUPPORTED
- LEASING/MONTHLY RENTALS
- ITAR CERTIFIED SECURE ASSET SOLUTIONS

SERVICE CENTER REPAIRS

Experienced engineers and technicians on staff at our full-service, in-house repair center

*InstraView*SM REMOTE INSPECTION

Remotely inspect equipment before purchasing with our interactive website at www.instraview.com ↗

WE BUY USED EQUIPMENT

Sell your excess, underutilized, and idle used equipment. We also offer credit for buy-backs and trade-ins. www.artisanng.com/WeBuyEquipment ↗

LOOKING FOR MORE INFORMATION?

Visit us on the web at www.artisanng.com ↗ for more information on price quotations, drivers, technical specifications, manuals, and documentation

Contact us: (888) 88-SOURCE | sales@artisanng.com | www.artisanng.com