



## Artisan Technology Group is your source for quality new and certified-used/pre-owned equipment

- FAST SHIPPING AND DELIVERY
- TENS OF THOUSANDS OF IN-STOCK ITEMS
- EQUIPMENT DEMOS
- HUNDREDS OF MANUFACTURERS SUPPORTED
- LEASING/MONTHLY RENTALS
- ITAR CERTIFIED SECURE ASSET SOLUTIONS

### SERVICE CENTER REPAIRS

Experienced engineers and technicians on staff at our full-service, in-house repair center

### *InstraView*<sup>SM</sup> REMOTE INSPECTION

Remotely inspect equipment before purchasing with our interactive website at [www.instraview.com](http://www.instraview.com) ↗

### WE BUY USED EQUIPMENT

Sell your excess, underutilized, and idle used equipment. We also offer credit for buy-backs and trade-ins. [www.artisanng.com/WeBuyEquipment](http://www.artisanng.com/WeBuyEquipment) ↗

### LOOKING FOR MORE INFORMATION?

Visit us on the web at [www.artisanng.com](http://www.artisanng.com) ↗ for more information on price quotations, drivers, technical specifications, manuals, and documentation

**Contact us:** (888) 88-SOURCE | [sales@artisanng.com](mailto:sales@artisanng.com) | [www.artisanng.com](http://www.artisanng.com)

### Features

- Multiple transmitter configurations
- Memory wrap around
- Software configurable
- Real-time operation
- Programmable start time
- Miniature size
- User-friendly
- N.I.S.T. traceable

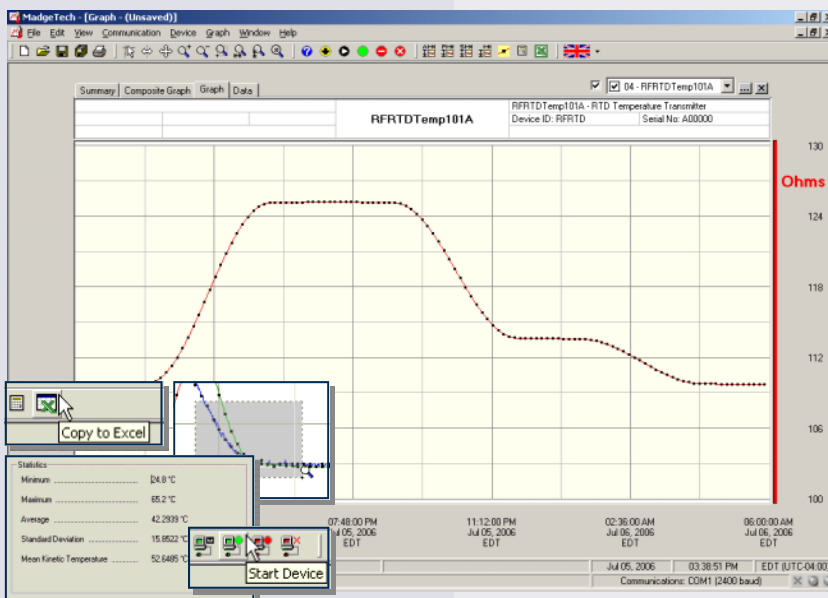
### Applications

- Calibration chamber monitoring
- Precision temperature recording
- Warehouse monitoring
- HVAC
- Medical and Pharmaceutical
- Museum monitoring
- Environmental studies
- Replace costly strip chart recorders



The RFRTDTemp101A is a battery powered precision temperature recorder and wireless transmitter. This is an all-in-one compact, portable, easy to use device that will measure and record up to 5,461 measurements. The RFRTDTemp101A combines the features from the standard product line and adds the convenience of a wireless transmitter. When enabled, the wireless transmitter will transmit readings back to the host computer where the data can be analyzed in real time. These readings are also logged to the device's memory for added data security. The convenient slide switch allows the transmitter to be turned on or off without affecting the operation of the device.

The device can be started, stopped and configured directly from your computer. Its small size allows it to fit almost anywhere. In addition to the wireless communications, the RFRTDTemp101A makes data retrieval quick and easy. Simply plug the device into an empty COM port and our user-friendly software will handle the rest.



### MadgeTech Data Recorder Software

displays temperature data in an easy to use graph.

The Windows®-based software package allows the user to effortlessly collect, display and analyze data. A variety of powerful tools allow you to examine, export, and print professional looking data with just a click of the mouse.

Click [MadgeTech Software](#) for more information or to download the software.

# RFRTDTEMP101A SPECIFICATIONS\*

## Temperature\*\*

**Measurement Range:** -200 to +850°C

**Resolution:** 0.01°C

**Calibrated Accuracy:** ±0.1°C \*\*\*

**Specified Accuracy Range:** -200 to +850°C

## Resistance

**Nominal Range:** 0 to 500Ω

**Resolution:** 0.001Ω

**Calibrated Accuracy:** ±0.015Ω\*\*\*

**Specified Accuracy Range:** 0 to 500Ω @ 25°C

**Input Connection:** Removable screw terminal; 2,3 or 4 wire interface\*\*\*\*

**Temperature Effect on Span:** <25ppm/°C; <10ppm/°C typical

**Temperature Effect on Offset:** <10ppm cumulative over -30 to +70 °C

**Memory:** 5,461 readings; software configurable memory wrap

\*\*Temperature specifications based on ideal 100 Ω Pt RTD compliant with IEC 751 (1983) and ITS-90, 5000 Ω FSR(accuracy based on 36" lead wire RTD with 4 wire configuration)

\*\*\*Calibrated accuracies based on standard MadgeTech calibrations for 0 to 200Ω range.

\*\*\*\*100 Ohm, 2 or 4 wire RTD probes are recommended for the most accurate performance. Most 100 Ohm, 3 wire RTD probes will work, but MadgeTech cannot guarantee the accuracy. To determine whether or not the 3-wire RTD probe will work, the resistance between the two same colored wires should be less than 1 Ohm. (Note: Please contact the manufacturer of the RTD probe for questions on the resistance)

**Reading Rate:** 1 reading every 30 seconds to 1 every 12 hours

**Calibration:** Digital calibration through software

**Data Format:** Date and time stamped °C, °F, K, °R, Ω

**Computer Interface:** PC serial or RS232C COM (interface cable required); 57,600 baud

**Time Accuracy:** ±1 minute/month (at 20 to 30°C)

**RF Carrier Frequency:** 418 ± 0.075MHz

**RF Baud Rate:** 4,800 baud

**Maximum Output Power:** <0dBm typical (<1mW)

**Receiver Sensitivity (RFC101A):** -90dBm typical

**Range:** Line-of-sight: up to 120 ft., Urban: up to 40 ft.

**Approvals:** US (FCC), CA (IC)

**Battery Type:** 3.6V lithium battery included; **user replaceable**

**Battery Life:** 1 year typical (1 min reading rate @ 25 °C)

**Software:** XP SP3/Vista/Windows 7

**Operating Environment:** -30 to +70°C, 0 to 95%RH non-condensing

**Dimensions:** 1.7" x 2.7" x 0.8" + 2.0" antenna (42mm x 69mm x 21mm + 51mm antenna)

**Weight:** 2 oz (60 g)

**Enclosure:** ABS plastic

**BATTERY WARNING:** FIRE, EXPLOSION, AND SEVERE BURN HAZARD. DO NOT RECHARGE, DISASSEMBLE, HEAT ABOVE 212°F, INCINERATE OR EXPOSE CONTENTS TO WATER.

## SOFTWARE FEATURES

**Multiple Graphs:** Simultaneously analyze data from several units or deployments; easily switch to a single data series

**Graphical Cursor:** One click displays readings by time, value, parameter or sample number

**Data Table:** Instantly access tabular view for detailed dates, times, values, and annotations

**Scaling Options:** Autoscale function fits data to the screen, or allows user to manually enter their own values

**Formatting Options:** Change colors, line styles, plotting options, show or hide channels quickly

**Statistics:** Calculate averages, min, max, standard deviation, and mean kinetic temperature with the touch of a button

**Export Data:** Export data in a variety of common formats, or switch to Excel® with a single click

**Calibration:** Automatically calculate and store calibration parameters

**Logger Configuration:** Easy set up and launch of data loggers with immediate or delayed start, preferred sample rate, and device ID

**Communications:** Automatically sets up communications port, or lets user select configuration

\*SPECIFICATIONS ARE SUBJECT TO CHANGE WITHOUT NOTICE. SPECIFIC WARRANTY AND REMEDY LIMITATIONS APPLY. CALL 1-603-456-2011 OR GO TO WWW.MADGETECH.COM FOR DETAILS.

## ORDERING INFORMATION

Model	Description	Price (U.S.)
RFRTDTEMP101A	Precision Temperature Recorder and Wireless Transmitter	\$329.00
RFC101A	Software, manual, wireless receiver, power supply and RS232 interface cable	\$199.00
RFC200A	Software, manual, wireless receiver, power supply and USB interface cable	\$249.00
NIST	N.I.S.T. Calibration Certificate	Call for Pricing
LTC-7PN	Replacement battery for RFRTDTemp101A	\$10.00

### ASK ABOUT OUR OTHER DATA RECORDERS

Temperature	Pulse/Event/State
Humidity	Low Level Current
Pressure	Low Level Voltage
pH	RF Transmitters
Level	Intrinsically Safe
Shock	Spectral Vibration
LCD Display	

For Quantity Discounts call 603-456-2011 or email [sales@madgetech.com](mailto:sales@madgetech.com)



DOC-1086009-00 REV 9 2011.07.21



## Artisan Technology Group is your source for quality new and certified-used/pre-owned equipment

- FAST SHIPPING AND DELIVERY
- TENS OF THOUSANDS OF IN-STOCK ITEMS
- EQUIPMENT DEMOS
- HUNDREDS OF MANUFACTURERS SUPPORTED
- LEASING/MONTHLY RENTALS
- ITAR CERTIFIED SECURE ASSET SOLUTIONS

### SERVICE CENTER REPAIRS

Experienced engineers and technicians on staff at our full-service, in-house repair center

### *InstraView*<sup>SM</sup> REMOTE INSPECTION

Remotely inspect equipment before purchasing with our interactive website at [www.instraview.com](http://www.instraview.com) ↗

### WE BUY USED EQUIPMENT

Sell your excess, underutilized, and idle used equipment. We also offer credit for buy-backs and trade-ins. [www.artisanng.com/WeBuyEquipment](http://www.artisanng.com/WeBuyEquipment) ↗

### LOOKING FOR MORE INFORMATION?

Visit us on the web at [www.artisanng.com](http://www.artisanng.com) ↗ for more information on price quotations, drivers, technical specifications, manuals, and documentation

**Contact us:** (888) 88-SOURCE | [sales@artisanng.com](mailto:sales@artisanng.com) | [www.artisanng.com](http://www.artisanng.com)