



Artisan Technology Group is your source for quality new and certified-used/pre-owned equipment

- FAST SHIPPING AND DELIVERY
- TENS OF THOUSANDS OF IN-STOCK ITEMS
- EQUIPMENT DEMOS
- HUNDREDS OF MANUFACTURERS SUPPORTED
- LEASING/MONTHLY RENTALS
- ITAR CERTIFIED SECURE ASSET SOLUTIONS

SERVICE CENTER REPAIRS

Experienced engineers and technicians on staff at our full-service, in-house repair center

*InstraView*SM REMOTE INSPECTION

Remotely inspect equipment before purchasing with our interactive website at www.instraview.com ↗

WE BUY USED EQUIPMENT

Sell your excess, underutilized, and idle used equipment. We also offer credit for buy-backs and trade-ins. www.artisanng.com/WeBuyEquipment ↗

LOOKING FOR MORE INFORMATION?

Visit us on the web at www.artisanng.com ↗ for more information on price quotations, drivers, technical specifications, manuals, and documentation

Contact us: (888) 88-SOURCE | sales@artisanng.com | www.artisanng.com

REVISIONS				
REV.	ZONE	DESCRIPTION	DATE	DRAWN
A		ADDED ECN3989	2/8/99	EJB
B		ADDED ECN4872	6/13/00	NTC
C		ADDED ECN6942	05/03	JRF

AMP PLUG, 206044-1 (ECK131)
AMP BACKSHELL, 206070-1 (ECK134)
#16-18 PINS, 66098-7 (EIK194)

CABLE (4 COND. #16), ECX566

ALPHA #5440/4

ALPHA #1452/16 OR CONSOLIDATED #1707

PIN	WIRE	WIRE	SIGNAL
14	-	-	-
13	-	-	-
12	-	-	-
11	-	-	-
10	-	-	-
9	-	-	-
8	SHIELD	SHIELD	MTR SHLD
7	-	-	-
6	-	-	-
5	BRN	WHT	MTR Ø C
4	RED	RED	MTR Ø B
3	BLK	BLK	MTR Ø A
2	-	-	-
1	ORN	GRN	FRM GND

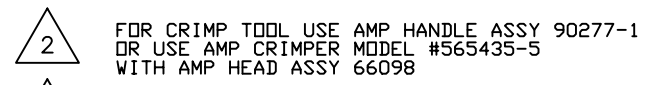
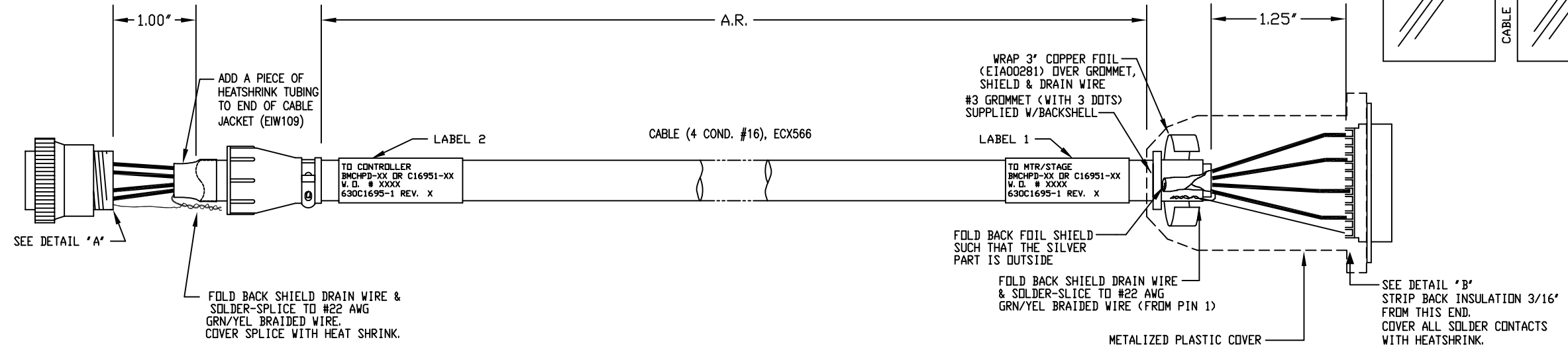
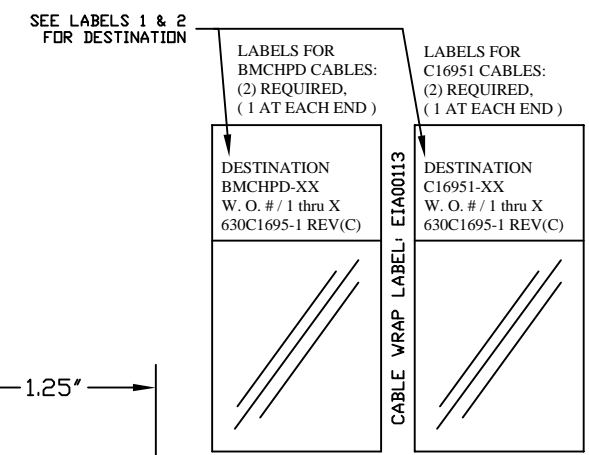
HI POWER "D" FEMALE
P/N DBMM9W4S (ECK00657)
+ CONTACTS (SOCKETS), #DMS3744-6 (ECK00659)
BACKSHELL (ECK00656)

CABLE (4 COND. #16), ECX566

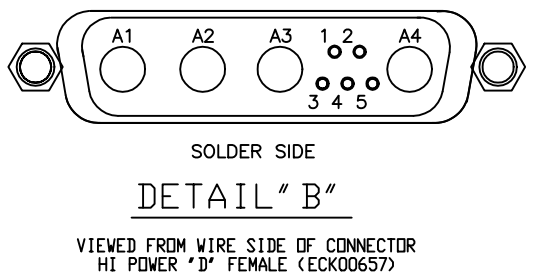
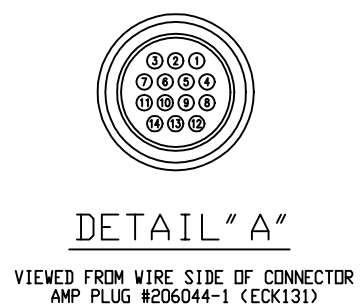
ALPHA #5440/4

ALPHA #1452/16 OR CONSOLIDATED #1707

SIGNAL	WIRE	WIRE	SOCKET
MTR Ø A	BLK	BLK	A1
MTR Ø B	RED	RED	A2
MTR Ø C	WHT	BRN	A3
FRM GND	GRN	ORN	A4
MTR SHLD	SHIELD	SHIELD	1



1 STARTING CABLE LENGTH = 15 FT 5 IN



PART CODE:

C16951-XX	C16951-1 TO -450 MAX LENGTH (DECIMETERS)
BMCHPD-XX	BMCHPD-1 TO -150 MAX LENGTH (FEET)

PROPRIETARY INFORMATION
THIS DRAWING IS THE PROPERTY OF AEROTECH, INC. AND IS SUBMITTED IN CONFIDENCE AND SHALL NOT BE REPRODUCED NOR COPIED NOR DISCLOSED TO OTHERS UNDER PENALTY OF LAW.

AEROTECH®
AEROTECH, INC. 101 Zeta Drive
Pittsburgh, PA. 15238
(412)963-7470
www.aerotech.com

TOLERANCES ON FRACTIONS DECIMALS ANGLES
0 TO 6 ± 1/32 .XX ± .01 ± 0-30'
OVER 6 ± 1/16 .XXX ± .005

RMS FINISH EXCEPT AS NOTED

DRAWN	NTC	10/97
CHECKED	DES	6/00
APPD.	CC	6/00

BRUSHLESS MOTOR CABLE (14 PIN TO HIGH PWR "D")
450 DECIMETERS (150') MAX LENGTH
CABLE: BL MTR-14P-4DU-MAX450DM

PART CODE	SIZE	REV.
SEE ABOVE	C	C

630C1695-1

SCALE NTS FILE NAME 630C1695-1C1.dwg SHEET 1 OF 1



Artisan Technology Group is your source for quality new and certified-used/pre-owned equipment

- FAST SHIPPING AND DELIVERY
- TENS OF THOUSANDS OF IN-STOCK ITEMS
- EQUIPMENT DEMOS
- HUNDREDS OF MANUFACTURERS SUPPORTED
- LEASING/MONTHLY RENTALS
- ITAR CERTIFIED SECURE ASSET SOLUTIONS

SERVICE CENTER REPAIRS

Experienced engineers and technicians on staff at our full-service, in-house repair center

*InstraView*SM REMOTE INSPECTION

Remotely inspect equipment before purchasing with our interactive website at www.instraview.com ↗

WE BUY USED EQUIPMENT

Sell your excess, underutilized, and idle used equipment. We also offer credit for buy-backs and trade-ins. www.artisanng.com/WeBuyEquipment ↗

LOOKING FOR MORE INFORMATION?

Visit us on the web at www.artisanng.com ↗ for more information on price quotations, drivers, technical specifications, manuals, and documentation

Contact us: (888) 88-SOURCE | sales@artisanng.com | www.artisanng.com