



Artisan Technology Group is your source for quality new and certified-used/pre-owned equipment

- FAST SHIPPING AND DELIVERY
- TENS OF THOUSANDS OF IN-STOCK ITEMS
- EQUIPMENT DEMOS
- HUNDREDS OF MANUFACTURERS SUPPORTED
- LEASING/MONTHLY RENTALS
- ITAR CERTIFIED SECURE ASSET SOLUTIONS

SERVICE CENTER REPAIRS

Experienced engineers and technicians on staff at our full-service, in-house repair center

*InstraView*SM REMOTE INSPECTION

Remotely inspect equipment before purchasing with our interactive website at www.instraview.com ↗

WE BUY USED EQUIPMENT

Sell your excess, underutilized, and idle used equipment. We also offer credit for buy-backs and trade-ins. www.artisanng.com/WeBuyEquipment ↗

LOOKING FOR MORE INFORMATION?

Visit us on the web at www.artisanng.com ↗ for more information on price quotations, drivers, technical specifications, manuals, and documentation

Contact us: (888) 88-SOURCE | sales@artisanng.com | www.artisanng.com

Zeiss 200M Axiovert inverted microscope

This is a service instrument for use by any group that needs it. The microscope can be operated by [BBPIC staff](#), or investigators may be trained for independent use.

Features:

Zeiss Axiovert 200M motorized inverted microscope with 10X conventional and 20X DIC objectives and 40X, 63X, and 100X DIC oil-immersion objectives.

Mercury arc lamps are used for fluorescence microscopy instead of lasers. This gives a wide choice of fluorophores, and is not limited to 2 or 3 specific excitation lines, as with lasers. Also, Hg illumination allows the excitation of UV and short wavelength blues dyes, such as DAPI and the Hoechst nuclear dyes. Excitation at UV wavelengths with laser-scanning confocal (LSC) microscopes requires either expensive UV-lasers or special multi-photon microscopes. The BBPIC microscope as well has 340 nm and 380 nm excitation filter cubes in the reflector turret for calcium ratioing studies.

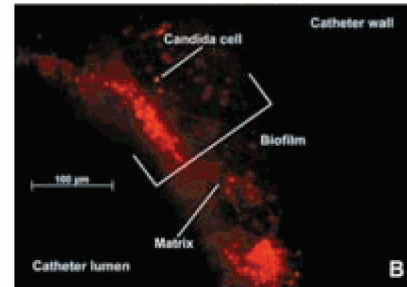
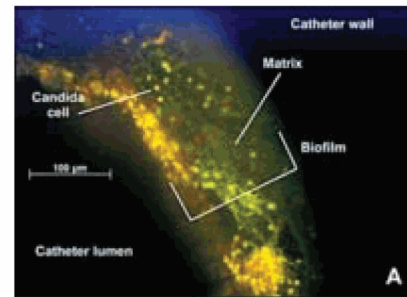
Confocal microscopy is done using a spinning Nipkow disc. This confocal mode requires a reasonably bright signal, but gives the potential of studying living cells and samples that are sensitive to the phototoxicity and photobleaching of laser based systems.

Image series can be collected as Z-stacks through a sample, as a series of time-lapse images, or both, as time-lapse Z-stacks. These series may also be acquired at a single-wavelength, or as multiple-wavelength images for multiple labeling studies.

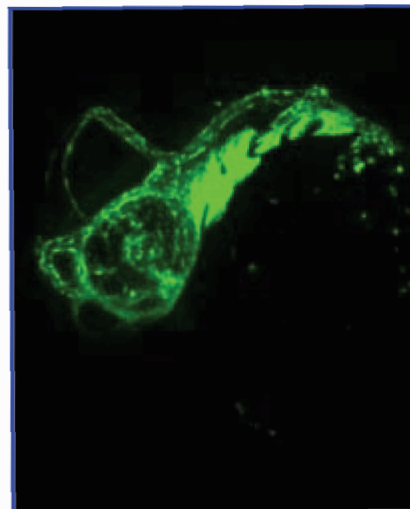
Specimens may also be examined by transmitted brightfield illumination, transmitted-light differential interference contrast (DIC), asymmetric illumination contrast (AIC), or epi-fluorescence.

Images collected by any of these methods may then be deconvolved using the microscope's software. The software and hardware are fully integrated so that the imaging program acquires the information needed to do the deconvolution when the image is acquired.

Image recording is done with a cooled CCD monochrome digital camera. Image files may be saved in the Zeiss format or in JPG, TIF, or other formats.



Fluorescence images of in vivo *Candida albicans* biofilm with both FUN-1 and ConA stains after 24 hours of development. A view of the catheter wall and intraluminal biofilm in an end-on orientation is shown. (A) Image capture was set for simultaneous visualization of both green and red fluorescence. (B) Image capture was set for visualization of red fluorescence. Cells fluorescing red are metabolically active. Images by David Andes from D. Andes, *et al.* Development and Characterization of an *In Vivo* Central Venous Catheter *Candida albicans* Biofilm Model. Infection and Immunity, 72(10):6023-6031. Click on the image for a larger, 2 MB image.



Zebrafish embryo, 36 hours post-fertilization. Fluorescence is from Green Fluorescent Protein (GFP) coupled to Fli1 which is expressed in the vascular endothelium and branchial arches. About 100X.

Unpublished. Images by Susan Bello, with permission. Click on the image for a larger, 1.7 MB image.



Artisan Technology Group is your source for quality new and certified-used/pre-owned equipment

- FAST SHIPPING AND DELIVERY
- TENS OF THOUSANDS OF IN-STOCK ITEMS
- EQUIPMENT DEMOS
- HUNDREDS OF MANUFACTURERS SUPPORTED
- LEASING/MONTHLY RENTALS
- ITAR CERTIFIED SECURE ASSET SOLUTIONS

SERVICE CENTER REPAIRS

Experienced engineers and technicians on staff at our full-service, in-house repair center

*InstraView*SM REMOTE INSPECTION

Remotely inspect equipment before purchasing with our interactive website at www.instraview.com ↗

WE BUY USED EQUIPMENT

Sell your excess, underutilized, and idle used equipment. We also offer credit for buy-backs and trade-ins. www.artisanng.com/WeBuyEquipment ↗

LOOKING FOR MORE INFORMATION?

Visit us on the web at www.artisanng.com ↗ for more information on price quotations, drivers, technical specifications, manuals, and documentation

Contact us: (888) 88-SOURCE | sales@artisanng.com | www.artisanng.com