



Artisan Technology Group is your source for quality new and certified-used/pre-owned equipment

- FAST SHIPPING AND DELIVERY
- TENS OF THOUSANDS OF IN-STOCK ITEMS
- EQUIPMENT DEMOS
- HUNDREDS OF MANUFACTURERS SUPPORTED
- LEASING/MONTHLY RENTALS
- ITAR CERTIFIED SECURE ASSET SOLUTIONS

SERVICE CENTER REPAIRS

Experienced engineers and technicians on staff at our full-service, in-house repair center

*InstraView*SM REMOTE INSPECTION

Remotely inspect equipment before purchasing with our interactive website at www.instraview.com ↗

WE BUY USED EQUIPMENT

Sell your excess, underutilized, and idle used equipment. We also offer credit for buy-backs and trade-ins. www.artisanng.com/WeBuyEquipment ↗

LOOKING FOR MORE INFORMATION?

Visit us on the web at www.artisanng.com ↗ for more information on price quotations, drivers, technical specifications, manuals, and documentation

Contact us: (888) 88-SOURCE | sales@artisanng.com | www.artisanng.com

Industrial Windows CE Touch Panel Computers

NI TPC-2106, NI TPC-2106T **NEW!**

- 416 MHz Intel XScale Processor
 - 64 MB SDRAM and CompactFlash 2.0 expansion slot
 - Windows CE 5.0 OS
 - 1 Touch Panel Deployment License
- Mounting and Certifications**
- Panel-mount brackets included
 - NEMA4/IP65-compliant front panel
 - Extended temperature range to 50 °C
 - CE, FCC, and UL certifications

Display

- TPC-2106 – STN LCD display
- TPC-2106T – improved contrast and luminance TFT LCD display

Connectivity

- 1 Ethernet (10/100BaseT)
- 3 serial ports (2 RS232 and 1 RS485)
- 2 USB 1.1 ports (1 host, 1 client)



Features	TPC-2106	TPC-2106T
LCD display	STN LCD	TFT LCD
LCD screen size	5.7 in.	5.6 in.
Display resolution	320 x 240	320 x 234
Contrast ratio	55 to 1	400 to 1
Luminance	400 cd/m ²	500 cd/m ²

Table 1. TPC-2106 and TPC-2106T Display Comparison

Overview

National Instruments TPC-2106 and TPC-2106T touch panel computers (TPCs) provide an industrial touch panel display with a 416 MHz XScale processor, rugged solid-state hard drives, and an embedded Windows CE operating system. TPC-2106/T products run Windows CE OS preloaded in the onboard 64 MB solid-state (flash) memory. The systems offer one Ethernet, two USB 1.1 ports, and three serial ports for connectivity.

The TPC-2106 and TPC-2106T both work with the NI LabVIEW Touch Panel Module and appear as targets in the LabVIEW 8.5 Project. The two devices are binary compatible so you can exchange code easily between them without recompiling the executable. Add a human machine interface (HMI) to your NI programmable automation controller (PAC) using the LabVIEW Touch Panel Module to deploy LabVIEW to an embedded Windows CE HMI.

Compact Design

A TPC-2106/T features a small, rugged compact design that is well-suited for applications where space is limited. The 5.6 or 5.7 in. color display with touch screen includes antiglare NEMA4/IP65 glass. Both TPCs offer the same physical dimensions when mounted; feature high

shock, vibration, and temperature ratings; and meet global safety standards and agency certifications.

HMI Development with the LabVIEW Touch Panel Module

The LabVIEW Touch Panel Module is an extension of the LabVIEW graphical development environment, which you can use to quickly create, build, and deploy HMIs. With the LabVIEW 8.5 Touch Panel Module, simply select your TPC target, choose a template for development, and deploy over Ethernet using the run button.

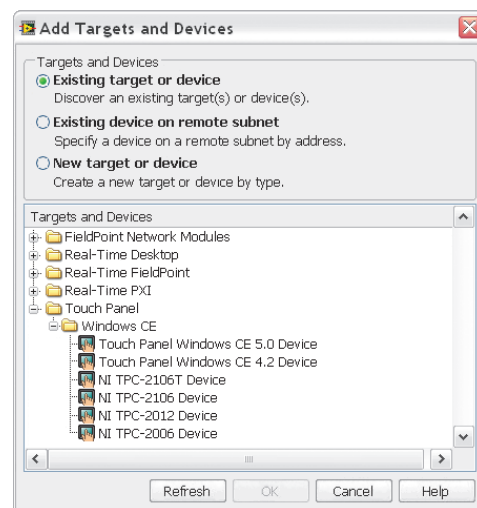


Figure 1. Select Targets and Devices in the LabVIEW 8.5 Touch Panel Module



Industrial Windows CE Touch Panel Computers

Remote Display Software

A TPC-2106/T includes remote display software already installed on the TPC when it is shipped. To view the entire screen and interact through your PC with the embedded touch panel computer, simply install the free host program and connect to the hardware. From the Windows CE start menu, select the Remote Display application and enter the IP address of the host PC. With the Remote Display function, you can quickly interact with the embedded touch panel hardware using your PC keyboard, mouse, and screen.

Communication Options between TPCs and PACs

A TPC-2106/T supports a wide range of communication options to exchange variables with PACs and programmable logic controllers (PLCs).

		LabVIEW 8.5 Touch Panel Module				
		Shared Variables	TCP/IP and UDP	Modbus	NI Serial	NI-VISA
Hardware	TPC-2106/T	Client	✓	TCP/IP and ASCII	✓	✓
	TPC-2012	Client	✓	TCP/IP and ASCII	✓	✓

Table 2. TPC-2106/T Communication Options

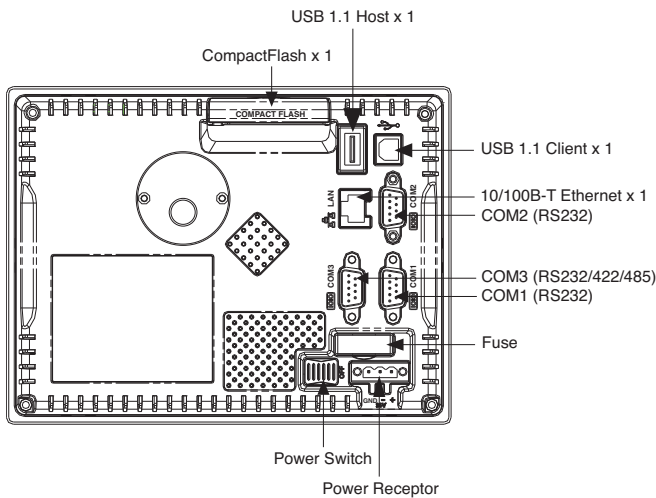


Figure 2. Rear View of a TPC-2106/T

NEMA4 and IP65 Industrial Ratings

NI HMIs feature a NEMA4 and IP65 industrial-rated front panel. When these systems are panel mounted in a NEMA4 or IP65 industrial enclosure, they are capable of withstanding the ingress of dust and water jets. The NEMA4/IP65 rating makes these systems ideal for

harsh environments on the factory floor, in industrial plants, and for pharmaceuticals.

Open Flexible Platform

A TPC-2106/T features an open, extensible architecture based on industry standards. Featuring Windows CE and standard communication buses (RS232/422/485, USB, and Ethernet), a TPC-2106/T can be quickly and easily configured to address requirements beyond traditional HMI applications. When combined with the LabVIEW Touch Panel Module graphical development environment and rugged, industrial PACs, a TPC-2106/T provides a fully integrated solution for machine automation and other industrial applications.

Typical Applications

HMI for PAC-Based Control Systems with NI Compact FieldPoint

A TPC-2106/T provides an operator interface for all NI PACs, including Compact FieldPoint, CompactRIO, real-time PXI, and Compact Vision System.

HMI for PAC-Based Machine Control Systems with NI CompactRIO

For embedded machine control systems with CompactRIO, a TPC-2106/T is ideal as a local operator interface to provide input and feedback to the CompactRIO machine control unit. A TPC-2106/T functions as the local HMI for CompactRIO, as shown in Figure 3.

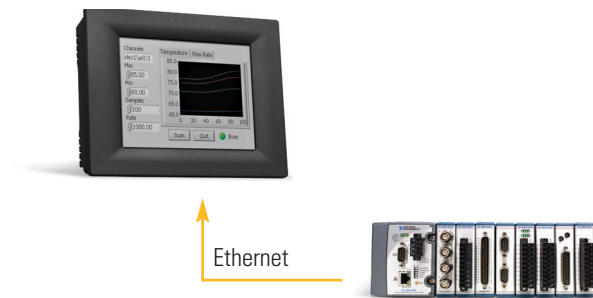


Figure 3. Touch Panel Display for Embedded Machine Control with CompactRIO

HMI Operator Interface for PAC-Based Control Systems with Compact FieldPoint for Real-Time Controller or Distributed I/O

Featuring a compact package, solid-state design, and touch panel interface, a TPC-2106/T is ideally suited for operator interfaces for embedded control systems with all PACs including Compact FieldPoint. A TPC-2106/T functions as the local HMI for embedded real-time control applications with Compact FieldPoint, as shown in Figure 4.

BUY ONLINE at ni.com or CALL 800 813 3693 (U.S.)

Industrial Windows CE Touch Panel Computers



Figure 4. Touch Panel Display for Compact FieldPoint Connected over Ethernet

Ordering Information

NI TPC-2106	780028-01
NI TPC-2106T	780029-01
NI LabVIEW Touch Panel Module	779708-09

Accessories

PS-5 Power Supply	778805-90
Touch Panel Deployment License ¹	779708-01

¹ Each TPC-2106/T includes one Touch Panel Deployment License.

BUY NOW!

For complete product specifications, pricing, and accessory information, call 800 813 3693 (U.S.) or go to ni.com/hmi.

Industrial Windows CE Touch Panel Computers

Specifications

System Components

Processor	416 MHz Intel XScale
Memory	64 MB SDRAM
Storage	64 MB flash
Memory expansion	1 CompactFlash slot
I/O ports	3 serial ports (2 RS232 and 1 RS485); 1 USB 1.0; 1 10/100BaseT Ethernet
OS	Windows CE 5.0 or later

Display

Description	
TPC-2106	STN color LCD
TPC-2106T	TFT transfective color LCD
Size	
TPC-2106	5.7 in.
TPC-2106T	5.6 in.
Touch screen	Analog resistive with tempered glass
Resolution	
TPC-2106	320 x 240 (256 colors)
TPC-2106T	320 x 234 (256 colors)
Viewing angle	
TPC-2106	100 deg (H), 55 deg (V)
TPC-2106T	100 deg (H), 60 deg (V)
Contrast ratio	
TPC-2106	55 to 1
TPC-2106T	400 to 1
Luminance	
TPC-2106	400 (cd/m ²)
TPC-2106T	500 (cd/m ²)

Power Requirement

Maximum power consumption	20 W
Input range	18 to 32 VDC

Physical

Dimensions (h by w by d)	148 by 195 by 44.4 mm (5.83 by 7.68 by 1.75 in.)
Gross weight	0.8 kg (1.76 lb)
Mounting	Panel (standard)

Environmental

Operating temperature	0 to 50 °C (32 to 122 °F)
Storage temperature	-20 to 70 °C (-4 to 158 °F)
Ingress protection	Front panel: NEMA4, IP65
Relative humidity	10 to 95% @ 40 °C (noncondensing)
Vibration, operating	1 g _{rms}

Safety and EMC/EMI Compliance

Safety

This product is designed to meet the requirements of the following standards of safety for information technology equipment:

- IEC 60950-1, EN 60950-1
- UL 60950-1, CSA 60950-1

Note: For UL and other safety certifications, refer to the product label or visit ni.com/certification, search by model number or product line, and click the appropriate link in the Certification column.

Electromagnetic Compatibility

This product is designed to meet the requirements of the following standards of EMC for electrical equipment for measurement, control, and laboratory use:

- EN 55024, CISPR 24 EMC requirements
- EN 55022, CISPR 22 Emissions; Class A
- EN 55011, CISPR 11 Emissions; Class A
- CE, C-Tick, ICES, and FCC Part 15 Emissions; Class A

Note: For EMC compliance, operate this device according to product documentation.

CE Compliance

This product meets the essential requirements of applicable European Directives, as amended for CE marking, as follows:

- 2006/95/EC; Low-Voltage Directive (safety)
- 2004/108/EEC; Electromagnetic Compatibility Directive (EMC)

Note: Refer to the Declaration of Conformity (DoC) for this product for any additional regulatory compliance information. To obtain the DoC for this product, visit ni.com/certification, search by model number or product line, and click the appropriate link in the Certification column.

Environmental Management

National Instruments is committed to designing and manufacturing products in an environmentally responsible manner. NI recognizes that eliminating certain hazardous substances from our products is beneficial not only to the environment but also to NI customers.

For additional environmental information, refer to the NI and the Environment Web page at ni.com/environment. This page contains the environmental regulations and directives with which NI complies, as well as any other environmental information not included in this document.

Waste Electrical and Electronic Equipment (WEEE)

EU Customers: At the end of their life cycle, all products must be sent to a WEEE recycling center. For more information about WEEE recycling centers and National Instruments WEEE initiatives, visit ni.com/environment/weee.htm.

BUY ONLINE at ni.com or CALL 800 813 3693 (U.S.)

NI Services and Support



NI has the services and support to meet your needs around the globe and through the application life cycle – from planning and development through deployment and ongoing maintenance. We offer services and service levels to meet customer requirements in research, design, validation, and manufacturing. Visit ni.com/services.

Training and Certification

NI training is the fastest, most certain route to productivity with our products. NI training can shorten your learning curve, save development time, and reduce maintenance costs over the application life cycle. We schedule instructor-led courses in cities worldwide, or we can hold a course at your facility. We also offer a professional certification program that identifies individuals who have high levels of skill and knowledge on using NI products. Visit ni.com/training.

Professional Services

Our NI Professional Services team is composed of NI applications and systems engineers and a worldwide National Instruments Alliance Partner program of more than 600 independent consultants and

integrators. Services range from start-up assistance to turnkey system integration. Visit ni.com/alliance.



OEM Support

We offer design-in consulting and product integration assistance if you want to use our products for OEM applications. For information about special pricing and services for OEM customers, visit ni.com/oem.

Local Sales and Technical Support

In offices worldwide, our staff is local to the country, giving you access to engineers who speak your language. NI delivers industry-leading technical support through online knowledge bases, our applications engineers, and access to 14,000 measurement and automation professionals within NI Developer Exchange forums. Find immediate answers to your questions at ni.com/support.

We also offer service programs that provide automatic upgrades to your application development environment and higher levels of technical support. Visit ni.com/ssp.

Hardware Services

NI Factory Installation Services

NI Factory Installation Services (FIS) is the fastest and easiest way to use your PXI or PXI/SCXI combination systems right out of the box. Trained NI technicians install the software and hardware and configure the system to your specifications. NI extends the standard warranty by one year on hardware components (controllers, chassis, modules) purchased with FIS. To use FIS, simply configure your system online with ni.com/pxiadvisor.

Calibration Services

NI recognizes the need to maintain properly calibrated devices for high-accuracy measurements. We provide manual calibration procedures, services to recalibrate your products, and automated calibration software specifically designed for use by metrology laboratories. Visit ni.com/calibration.

Repair and Extended Warranty

NI provides complete repair services for our products. Express repair and advance replacement services are also available. We offer extended warranties to help you meet project life-cycle requirements. Visit ni.com/services.



ni.com • 800 813 3693

National Instruments • info@ni.com



© 2007 National Instruments Corporation. All rights reserved. CompactRIO, FieldPoint, LabVIEW, National Instruments, National Instruments Alliance Partner, NI, ni.com, and SCXI are trademarks of National Instruments. Other product and company names listed are trademarks or trade names of their respective companies. A National Instruments Alliance Partner is a business entity independent from National Instruments and has no agency, partnership, or joint-venture relationship with National Instruments.

Artisan Technology Group - Quality Instrumentation ... Guaranteed | (888) 88-SOURCE | www.artisanng.com



Artisan Technology Group is your source for quality new and certified-used/pre-owned equipment

- FAST SHIPPING AND DELIVERY
- TENS OF THOUSANDS OF IN-STOCK ITEMS
- EQUIPMENT DEMOS
- HUNDREDS OF MANUFACTURERS SUPPORTED
- LEASING/MONTHLY RENTALS
- ITAR CERTIFIED SECURE ASSET SOLUTIONS

SERVICE CENTER REPAIRS

Experienced engineers and technicians on staff at our full-service, in-house repair center

*InstraView*SM REMOTE INSPECTION

Remotely inspect equipment before purchasing with our interactive website at www.instraview.com ↗

WE BUY USED EQUIPMENT

Sell your excess, underutilized, and idle used equipment. We also offer credit for buy-backs and trade-ins. www.artisanng.com/WeBuyEquipment ↗

LOOKING FOR MORE INFORMATION?

Visit us on the web at www.artisanng.com ↗ for more information on price quotations, drivers, technical specifications, manuals, and documentation

Contact us: (888) 88-SOURCE | sales@artisanng.com | www.artisanng.com