



## Artisan Technology Group is your source for quality new and certified-used/pre-owned equipment

- FAST SHIPPING AND DELIVERY
- TENS OF THOUSANDS OF IN-STOCK ITEMS
- EQUIPMENT DEMOS
- HUNDREDS OF MANUFACTURERS SUPPORTED
- LEASING/MONTHLY RENTALS
- ITAR CERTIFIED SECURE ASSET SOLUTIONS

### SERVICE CENTER REPAIRS

Experienced engineers and technicians on staff at our full-service, in-house repair center

### *InstraView*<sup>SM</sup> REMOTE INSPECTION

Remotely inspect equipment before purchasing with our interactive website at [www.instraview.com](http://www.instraview.com) ↗

### WE BUY USED EQUIPMENT

Sell your excess, underutilized, and idle used equipment. We also offer credit for buy-backs and trade-ins. [www.artisanng.com/WeBuyEquipment](http://www.artisanng.com/WeBuyEquipment) ↗

### LOOKING FOR MORE INFORMATION?

Visit us on the web at [www.artisanng.com](http://www.artisanng.com) ↗ for more information on price quotations, drivers, technical specifications, manuals, and documentation

**Contact us:** (888) 88-SOURCE | [sales@artisanng.com](mailto:sales@artisanng.com) | [www.artisanng.com](http://www.artisanng.com)

# INTUITIVE CONTROL PANEL GUIDE

- 1 Single keypad control of all instruments
- 2 LED status light lets you know which component is operating
- 3 Online context-sensitive 'Help' offers immediate answers to questions
- 4 Selectable modes of operation
- 5 Instrument keys and icons address instruments independently

Running the BioLogic LP System is an almost effortless task. The front control panel offers a logical layout, as well as instrument keys with icons that are identifiable at a glance. And once you've actually tried the system, programming quickly becomes second nature.

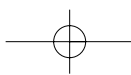
One of the many advantages of the BioLogic LP System is the ability to *edit methods in progress*. You'll spend far less time trying to optimize your separation. Plus, the BioLogic LP stores commonly used methods indefinitely, so you spend less time preparing your separation.

Because the BioLogic LP *automatically senses valves*, there's no need for you to configure the system before writing and running a method – the BioLogic LP workstation does it for you!

In addition, *delay volume is completely programmable*; the fraction collector tubes and chart recorder fraction advance marks are synchronized, so you know exactly which tubes contain the peak of interest.

Th  
easy  
Thre  
let  
infor  
need  
proc  
func  
the  
prog  
beer  
conc  
knov  
sepa





# DES YOU THROUGH THE PROCESS.

The BioLogic LP System makes it easy to accomplish multiple tasks. *Three programmable alarms* let you program alert signals informing you when an action is needed during the separation process. The *alarm and hold functions* allow you to program the system to hold a method in progress until a corrective action has been completed. You're free to concentrate on other projects, knowing you'll be alerted when the separation requires attention.

## LED SCREEN COMMUNICATES EACH MODE.

An easy-to-read and follow display is just one of the features that makes the BioLogic LP simple for everyone in the lab to use.



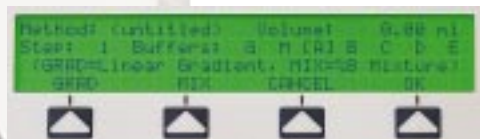
### METHODS MODE

Store up to 50 methods on the BioLogic LP System. Each method can contain as many as 50 pump steps, up to 50 collection windows (with or without threshold values), and three programmable alarms.



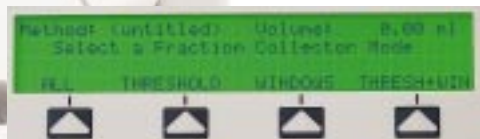
### TIME/VOLUME-BASED PROGRAM MODE

For greater application flexibility, choose between time and volume-based programming.



### BUFFER SELECTION MODE

Customize the BioLogic LP System to fit your application needs, from binary gradient formation to control of up to 5 buffers.



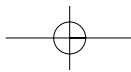
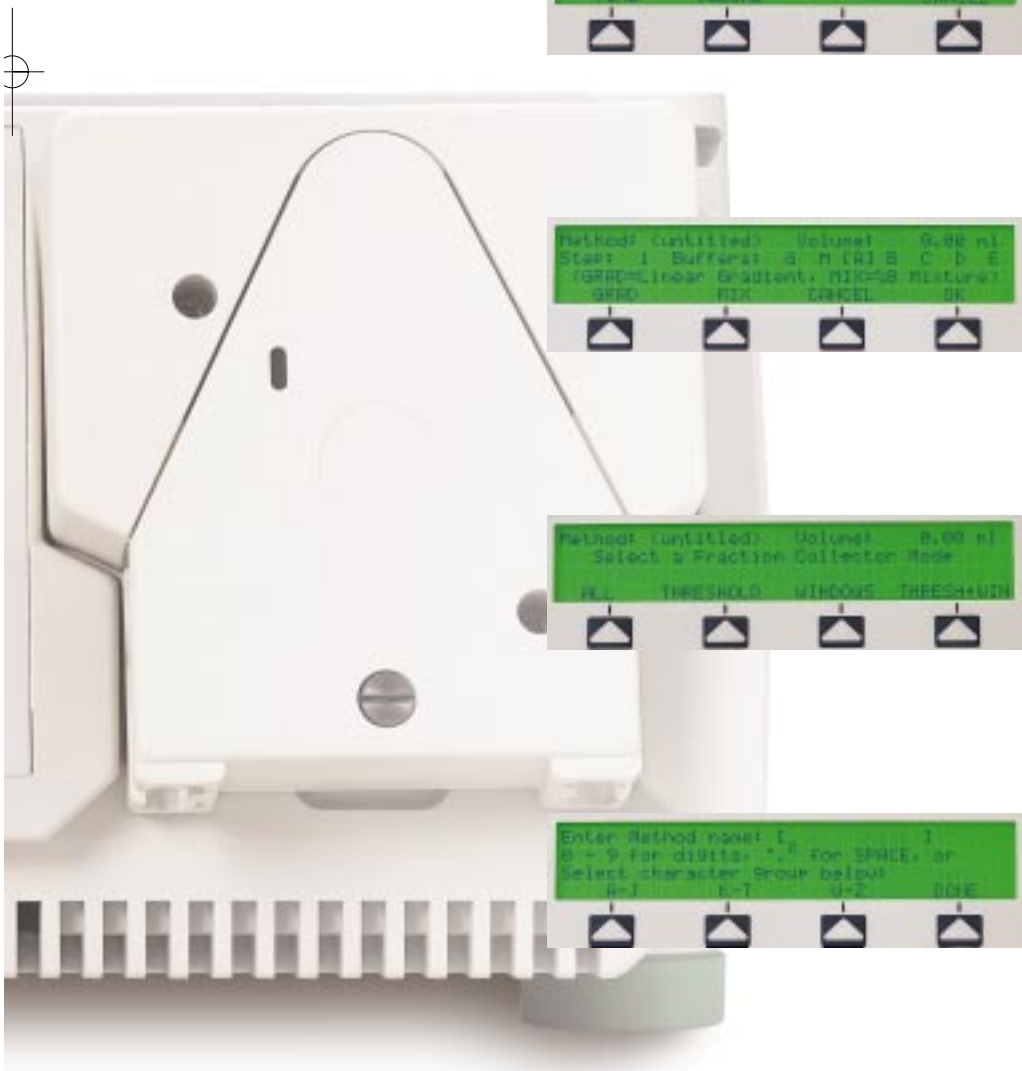
### FRACTION COLLECTOR MODE

Customize fraction collection – you can collect everything that elutes from a column during the run, or specify collection using collection windows, a UV threshold value, or a combination of both.



### METHODS NAMING MODE

Personalize your methods with the alphanumeric naming protocol. You can name each method with up to 12 characters and spaces.



# ADD PERIPHERALS, COLUMNS, AND



The BioLogic LP System is compatible with additional instruments recommended for top performance. This includes Bio-Rad's Valves, Fraction Collector Models 2110 and 2128, and the Model 1327 Chart Recorder. All are operated by the BioLogic LP Controller.

#### SV-5 BUFFER SELECT VALVE

For even greater flexibility, add the SV-5 Buffer Select Valve to your BioLogic LP System. You'll be able to access a total of 5 buffers or samples.



#### MODEL 2128 FRACTION COLLECTOR

This state-of-the-art collector accommodates a selection of racks for collection of any sample size, expanding your range of applications from analytical to preparative. You can collect overlay functions when the Model 2128 is connected to the BioLogic LP System's sophisticated collection control.



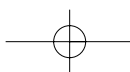
#### MODEL 2110 FRACTION COLLECTOR

Like the BioLogic LP System itself, this instrument is highly economical and user-friendly, enabling you to collect 0.1 - 10 ml fractions in 13 x 100 mm tubes or 1.5 ml micro test tubes. The Model 2110 Collector takes full advantage of the BioLogic LP System's sophisticated windows and threshold collection modes.



#### MODEL 1327 CHART RECORDER

This dual-channel chart recorder features automatically-controlled pen lift, paper start/stop, and event mark functions when connected to the BioLogic LP System. Its compact, flat bed design allows the chart recorder to fit neatly on the BioLogic Rack or alongside the instrument.



# AND SUPPORTS TO YOUR SYSTEM.

## GLASS ECONO-COLUMN® CHROMATOGRAPHY COLUMNS

The economical, high-quality choice for your BioLogic LP System. Maximum volumes of columns available range from 1 ml to over 1 liter. To optimize your sample application and buffer delivery, we recommend adding a flow adaptor to your Econo-Column column.

## ECONO-PAC® CARTRIDGES

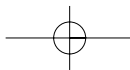
These prepacked chromatography columns last longer, flow faster, and often provide better resolution than self-prepared columns. Their prepacked convenience and low cost make them ideal for:

- First step purification of crude samples
- Methods development – an affordable way to test your method before scaling up
- Applications requiring frequent column disposal
- Single users – everyone can have their own set
- Devoting a cartridge to a single sample, eliminating the potential for cross contamination

Econo-Pac cartridges are available in 1 ml or 5 ml formats, packed with a range of Macro-Prep® supports. Up to three cartridges can be connected in series to triple sample capacity.

## ALL THE SUPPORT YOU NEED

Bio-Rad offers a variety of chromatography supports and media for your applications, including Macro-Prep ion exchange, HIC, and ceramic hydroxyapatite.



## BioLogic LP Specifications

|                              |   |
|------------------------------|---|
| <b>Pump</b>                  |   |
| Flow range                   | 0.1-40 ml/min   |
| Maximum counterpressure      | 30 psi (2 bar)  |
| Gradient formation           | Solenoid-activated proportioning valve.<br>Mixer volume ~750 µl             |
| <b>Detection Performance</b> |   |
| UV                           | Single channel, 280/254 nm with auto zero.<br>Detection range: 0.001-2 AUFS |
| Conductivity                 | Detection range: 0.5-500 mS/cm FS   |
| Temperature Range            | 4-40 °C   |
| Sample loading               | Manual loop fill<br>Automatic loading through SV-5<br>Buffer Select Valve   |

## BioLogic LP Ordering Information

| Catalog Number | Product Description  |
|----------------|--|
| 731-8300       | <b>Standard BioLogic LP System</b> , 110/120 V, includes BioLogic LP Controller, BioLogic Rack, and Accessory Kit containing inject valve (MV-6), proportioning valve/mixer, (Econo) UV optics, conductivity cell, tubing and fittings kit, user manual, starter kit and conductivity cell/column holder   |
| 731-8301       | <b>Standard BioLogic LP System</b> , same as 731-8300 except 220/240 V   |
| 731-8302       | <b>BioLogic LP System with 2110 Fraction Collector</b> , 110/120 V, includes BioLogic LP Controller, BioLogic Rack, and Accessory Kit containing inject valve (MV-6), proportioning valve/mixer, (Econo) UV optics, conductivity cell, tubing and fittings kit, user manual, starter kit and conductivity cell/column holder, plus Model 2110 Fraction Collector.  |
| 731-8303       | <b>BioLogic LP System with 2110 Fraction Collector</b> , 220/240 V   |
| 731-8304       | <b>BioLogic LP System with 2128 Fraction Collector</b> , 110/120 V, includes BioLogic LP Controller, BioLogic Rack, and Accessory Kit containing Inject valve (MV-6), proportioning valve/mixer, (Econo) UV optics, conductivity cell, tubing and fittings kit, user manual, starter kit and conductivity cell/column holder, plus Model 2110 Fraction Collector.  |
| 731-8305       | <b>BioLogic LP System with 2128 Fraction Collector</b> , 220/240 V   |
| 731-8306       | <b>BioLogic LP System with 2110 Fraction Collector and chart recorder</b> , 110/120 V, includes BioLogic LP Controller, BioLogic Rack, and Accessory Kit containing Inject valve (MV-6), proportioning valve/mixer, (Econo) UV optics, conductivity cell, tubing and fittings kit, user manual, starter kit and conductivity cell/column holder, plus Model 2110 Fraction Collector and Model 1327 Chart Recorder. |
| 731-8307       | <b>BioLogic LP System with 2110 Fraction Collector and chart recorder</b> , 220/240 V  |
| 731-8308       | <b>BioLogic LP System with 2128 Fraction Collector and chart recorder</b> , 110/120 V, includes BioLogic LP Controller, BioLogic Rack, and Accessory Kit containing Inject valve (MV-6), proportioning valve/mixer, (Econo) UV optics, conductivity cell, tubing and fittings kit, user manual, starter kit and conductivity cell/column holder, plus Model 2110 Fraction Collector and Model 1327 Chart Recorder. |
| 731-8309       | <b>BioLogic LP System with 2128 Fraction Collector and chart recorder</b> , same as 731-8308 except 220/240 V  |

## Fraction Collector Specifications

### Model 2110 Fraction Collector

|                           |   |
|---------------------------|---|
| Capacity                  | Eighty 13 x 100 mm glass, polypropylene, or polystyrene test tubes, or 1.5 ml micro test tubes when using optional adaptor                    |
| Collection basis          | 1-999 drops in 1 drop increments<br>0.05-9.99 minutes in 0.01 minute increments<br>10.0-99.9 minutes in 0.1 minute increments                 |
| Materials of construction | Case and carousel: polypropylene<br>Front panel: hard-coated polycarbonate<br>Drop former: silicone rubber<br>Waste outlet tube: polyurethane |
| Operating temperature     | 4-40 °C   |
| Dimensions                | 24 x 33 x 25 cm (W x D x H)   |
| Safety certification      | Meets I.E.C. 1010 and C.S.A. 22.2   |

### Model 2128 Fraction Collector

|                      |  |
|----------------------|--|
| Fractionation        | Time, drop or volume<br>Time: 0.03-99.9 min in 0.1 min units<br>Drop: 0-999 drops                    |
| Operating modes      | Time, drop, time windows (20), peak detection, time windows plus peak detection                      |
| Peak detection       | Threshold, including detection of maxima/minima for collection of double peaks above a set threshold |
| Flow rate capacity   | Up to 100 ml/min; counts drops up to 5 ml/min  |
| Detector input       | ± 0-10 mV, 0-100 mV, 0-1 V   |
| Wetted parts         | All non-metal, including Teflon, Tefzel, PPS, PEEK, Kel-F  |
| Dimensions           | 30.5 x 42 x 24 cm (W x D x H) (unit with Rack 1)   |
| Safety certification | Meets I.E.C. 1010 and C.S.A. 22.2  |

All specifications subject to change without notice.



**Bio-Rad  
Laboratories**

Life Science Group

U.S. (800) 4BIORAD California (510) 741-1000 Australia 02-9914-2900 Austria (1)-877 89 01 Belgium 09-385 55 11 Canada (905) 712-2771 China (01) 2046622 Denmark 39 17 9947  
Finland 90 804 2200 France (1) 49 60 68 34 Germany 089 31884-0 Hong Kong 7893300 India 91-11-461-0103 Italy 02-21609 1 Japan 03-5811-6270 The Netherlands 0318-540666  
New Zealand 09-443 3099 Singapore (65) 272-9877 Spain (91) 661 70 85 Sweden 46 (0) 8 627 50 00 Switzerland 01-809 55 55 United Kingdom 0800 181134 SIG 072296  
(P)96-0155 REV.A 796 Bulletin 2038



## Artisan Technology Group is your source for quality new and certified-used/pre-owned equipment

- FAST SHIPPING AND DELIVERY
- TENS OF THOUSANDS OF IN-STOCK ITEMS
- EQUIPMENT DEMOS
- HUNDREDS OF MANUFACTURERS SUPPORTED
- LEASING/MONTHLY RENTALS
- ITAR CERTIFIED SECURE ASSET SOLUTIONS

### SERVICE CENTER REPAIRS

Experienced engineers and technicians on staff at our full-service, in-house repair center

### *InstraView*<sup>SM</sup> REMOTE INSPECTION

Remotely inspect equipment before purchasing with our interactive website at [www.instraview.com](http://www.instraview.com) ↗

### WE BUY USED EQUIPMENT

Sell your excess, underutilized, and idle used equipment. We also offer credit for buy-backs and trade-ins. [www.artisanng.com/WeBuyEquipment](http://www.artisanng.com/WeBuyEquipment) ↗

### LOOKING FOR MORE INFORMATION?

Visit us on the web at [www.artisanng.com](http://www.artisanng.com) ↗ for more information on price quotations, drivers, technical specifications, manuals, and documentation

**Contact us:** (888) 88-SOURCE | [sales@artisanng.com](mailto:sales@artisanng.com) | [www.artisanng.com](http://www.artisanng.com)