



## Artisan Technology Group is your source for quality new and certified-used/pre-owned equipment

- FAST SHIPPING AND DELIVERY
- TENS OF THOUSANDS OF IN-STOCK ITEMS
- EQUIPMENT DEMOS
- HUNDREDS OF MANUFACTURERS SUPPORTED
- LEASING/MONTHLY RENTALS
- ITAR CERTIFIED SECURE ASSET SOLUTIONS

### SERVICE CENTER REPAIRS

Experienced engineers and technicians on staff at our full-service, in-house repair center

### *InstraView*<sup>SM</sup> REMOTE INSPECTION

Remotely inspect equipment before purchasing with our interactive website at [www.instraview.com](http://www.instraview.com) ↗

### WE BUY USED EQUIPMENT

Sell your excess, underutilized, and idle used equipment. We also offer credit for buy-backs and trade-ins. [www.artisanng.com/WeBuyEquipment](http://www.artisanng.com/WeBuyEquipment) ↗

### LOOKING FOR MORE INFORMATION?

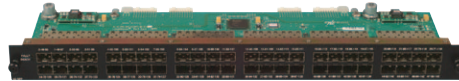
Visit us on the web at [www.artisanng.com](http://www.artisanng.com) ↗ for more information on price quotations, drivers, technical specifications, manuals, and documentation

**Contact us:** (888) 88-SOURCE | [sales@artisanng.com](mailto:sales@artisanng.com) | [www.artisanng.com](http://www.artisanng.com)



Data Sheet

# GLX/SLX4000 Series Port Cards



## Overview

The GLX/SLX non-blocking, multi-protocol physical layer switches allows any digital signal input, up to 10 Gb/s, to connect to any output. The GLX/SLX provides users the ability to control network configurations while saving set-up time, limit network errors, and reduce cost.

The modular design of the GLX/SLX port cards gives users unmatched flexibility. The GLX/SLX series port cards support a wide range of serial protocols:

- ◆ 1, 2, 4, 8 and 10 Gb/s Fibre Channel
- ◆ 10 Gb/s Ethernet
- ◆ 10/100/1000 Ethernet (RJ45 SFP or Optical SFP)
- ◆ FDDI
- ◆ SONET/SDH OC-3/OC-12/OC-48
- ◆ HD and SDI video
- ◆ FICON/ESCON
- ◆ iSCSI
- ◆ InfiniBand
- ◆ 1, 2, 2.5 Serial FPDP (Vita 17.1)

Each of the port cards are designed to fit both the GLX/SLX switches for increased flexibility. This adaptive design allows unique scalability so port cards can easily be added as your application grows. With the highest port density in the industry, the GLX/SLX port cards save valuable rack space.

The GLX/SLX4000 Port Cards provide solutions for multiple applications:

- ◆ Interop Labs
  - Fibre Channel
  - Ethernet
  - Telcom
  - Mil/Aero
- ◆ Test Labs
  - High-speed Data Comm
  - Manufacturing
  - Performance
- ◆ Network Security
  - Mirroring Data to IPS
- ◆ Data Centers
  - Media Conversion
  - Redundancy
- ◆ IT/Enterprise
  - Government
  - Finance
  - Fortune 500

## Learn More

Web / [cwcdefense.com/sales](http://cwcdefense.com/sales)

Email / [defensesales@curtisswright.com](mailto:defensesales@curtisswright.com)

**ABOVE & BEYOND**

**CURTISS  
WRIGHT** **Controls**  
Defense Solutions

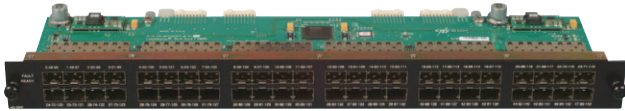
[cwcdefense.com](http://cwcdefense.com)



## RT4000 Port Card Multi-protocol/Multi-rate (Up to 4.25 Gb/s)

The RT4000 port card supports a full range of data speeds up to 4.25 Gb/s. Each port card can accept 48 Small Form Pluggable (SFP) transceivers. Depending on the SFP inserted, the RT4000 port card can handle a variety of protocols and data rates. By changing the SFP, the media can be changed from copper to optical or from 850 nm optical to 1310 nm or 1550 nm optical. The RT4000 supports SFP Digital Diagnostics.

The RT4000 port card can also do reconditioning and retiming modes at many different rates.



## Features

- ◆ 48 Hot-swappable SFP Ports
  - 850 nm optical, LC connector (300 m)
  - 1310 nm optical, LC connector (10 Km)
  - 1550 nm optical, LC connector (50+ Km)
  - HSSDC2 copper
  - RJ45 copper (10/100/1000 Ethernet)
- ◆ SFP Digital Diagnostics
- ◆ Signal Reconditioning, Signal Retiming
  - Good for long distance repeating
- ◆ Multi-rate – up to 4.25 Gb/s
- ◆ Port Card Indicators
  - 2 LEDs on each RJ45 connector indicate speed
  - 2 LEDs on GLX/SLX display indicate transmit enable and receive signal detect for each RJ45 connector
  - 1 Fault LED per port card
  - 1 Ready LED per port card
- ◆ Multi-protocol – any serial digital signal
  - 1, 2 and 4 Fibre Channel
  - 10/100/1000 Ethernet (RJ45 or Optical SFP)
  - FDDI
  - SONET/SDH OC-3/OC-12/OC-48
  - HD and SDI video
  - FICON/ESCON
  - iSCSI
  - InfiniBand
  - Serial FPDP
  - Auto speed selection

## Applications

- ◆ Media Conversion
- ◆ Copper-to-optical - Great for labs
- ◆ 850-1310 nm - Best for building-to-building links
- ◆ 850-1550 nm - Long distance for DWDM cross-town links
- ◆ Sniffer/Analyzer sharing - Save \$
- ◆ SAN Interop Labs
- ◆ Mil/Aero Test Labs



## RT10000 Port Card 10 GbE and Fibre Channel

The RT10000 port card supports 10 GbE and 10 Gigabit Fibre Channel. Each port card can accept 12 XFP transceivers. By changing the XFP, the media can be changed from 850 nm optical to 1310 nm or 1550 nm optical. The RT10000 supports XFP Digital Diagnostics.

The RT10000 port card can also do reconditioning and retiming modes at two different rates.



## Features

- ◆ 12 Hot-swappable XFP Ports
  - 850 nm optical, LC connector (300 m)
  - 1310 nm optical, LC connector (10 Km)
  - 1550 nm optical, LC connector (40+ Km)
- ◆ XFP Digital Diagnostics
- ◆ Signal Reconditioning, Signal Retiming
  - Good for long distance repeating
- ◆ Dual Rate, Dual Protocol
  - 10.31 Gb/s Ethernet (standard)
  - 10.52 Gb/s Fibre Channel (factory configured)
- ◆ Port Card Indicators
  - 2 LEDs on each RJ45 connector indicate speed
  - 2 LEDs on GLX/SLX display indicate transmit enable and receive signal detect for each RJ45 connector
  - 1 Fault LED per port card
  - 1 Ready LED per port card

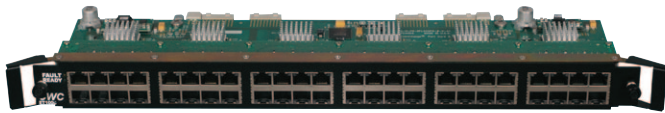
## Applications

- ◆ High-speed Data Comm
- ◆ 850-1310nm - Great for building-to-building links
- ◆ 850-1550nm - Great for DWDM cross-town links
- ◆ Sniffer/Analyzer sharing - Save \$
- ◆ Enterprise SAN Interop Labs
- ◆ Mil/Aero Test Labs 10 Gigabit Fibre



## ET1000 Port Card 10/100/1000 Ethernet

The ET1000 port card supports 10 Megabit, 100 Megabit, and 1 GbE speeds. Each port card can accept 48 RJ45 (CAT5) cables directly. Incoming copper signals, can be routed out to SFP port cards (RT4000 or NRT2500) for media conversion to optical. The ET1000 supports auto speed negotiation and auto cable re-wiring.



### Features

- ◆ 48 RJ45 Ports
  - Full duplex
  - Half duplex
- ◆ Ethernet Data Rates:
  - 10 Mb/s
  - 100 Mb/s
  - 1 Gb/s
  - User selectable or auto negotiate
- ◆ Media Conversion - 1000Base-TX copper to 1000Base-SX or FX fiber (both multi-mode and single-mode)
- ◆ Port Card Indicators
  - 2 LEDs on each RJ45 connector indicate speed
  - 2 LEDs on GLX/SLX display indicate transmit enable and receive signal detect for each RJ45 connector
  - 1 Fault LED per port card
  - 1 Ready LED per port card
- ◆ Auto Detect Cabling (MDI/MDIX support):
  - Straight cable vs. crossover swap
  - Polarity swap
  - Full vs. half duplex

### Applications

- ◆ CAT5/6 cable in (ET1000) and 850 nm optical out (RT4000 or NRT2500) - Great for large labs
- ◆ CAT5/6 cable in (ET1000) and 1310 nm optical out (RT4000 or NRT2500)- Great for building-to-building links
- ◆ CAT5/6 cable in (ET1000) and 1550 nm optical out (RT4000 or NRT2500)- Great for DWDM cross-town links
- ◆ Sniffer/Analyzer sharing - Save \$
- ◆ Enterprise Ethernet Interop Labs
- ◆ Mil/Aero Test Labs 10/100/1000 Ethernet

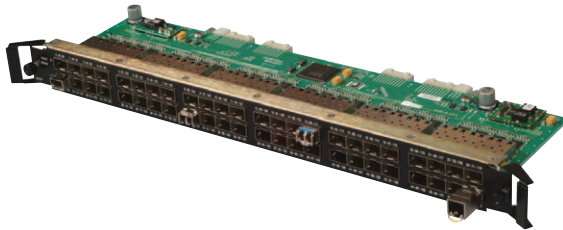




## **NRT2500 Port Card Multi-protocol/Multi-rate (Up to 2.5 Gb/s)**

The NRT2500 port card supports a full range of data speeds up to 2.5 Gb/s. Each port card can accept 48 SFP transceivers. Depending on the SFP inserted, the RT4000 port card can handle a variety of protocols and data rates. By changing the SFP, the media can be changed from copper to optical or from 850 nm optical to 1310 nm or 1550 nm optical.

The NRT2500 port card passes all signals without any reconditioning or retiming. Only effect on the incoming signal is a boost to 100% power when transmitted out. Acts most like a cable.

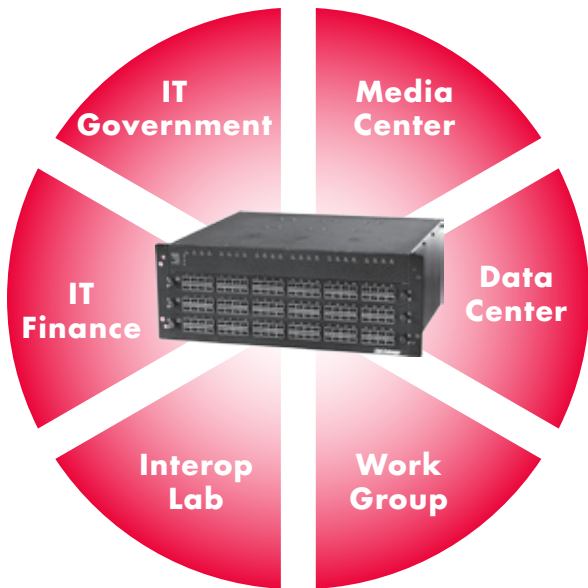


### **Features**

- ◆ 48 Hot-swappable SFP Ports
  - 850 nm optical (300 m), 1310 nm optical (10 Km), 1550 nm optical (50+ Km)
  - HSSDC2 copper, RJ45 copper (1000 Ethernet)
- ◆ Multi-rate – up to 2.5 Gb/s
- ◆ Multi-protocol – any serial digital signal
  - 1/2 Fibre Channel
  - 1000 Ethernet (RJ45 or Optical SFP)
  - FDDI
  - SONET/SDH OC-3/OC-12/OC-48
  - HD and SDI video
  - FICON/ESCON
  - iSCSI
  - InfiniBand
  - Serial FPDP

### **Applications**

- ◆ Video
- ◆ Copper-to-optical - Great for large labs
- ◆ 850-1310 nm - Great for building-to-building links
- ◆ 850-1550 nm - Great for DWDM cross-town links
- ◆ Sniffer/Analyzer sharing - Save \$
- ◆ Interop Labs Mil/Aero Test Labs



### Warranty

This product has a one year warranty.

### Contact Information

To find your appropriate sales representative:

Website: [www.cwcdefense.com/sales](http://www.cwcdefense.com/sales)

Email: [defensesales@curtisswright.com](mailto:defensesales@curtisswright.com)

### Technical Support

For technical support:

Website: [www.cwcdefense.com/support](http://www.cwcdefense.com/support)

Email: [support1@cwembedded.com](mailto:support1@cwembedded.com)

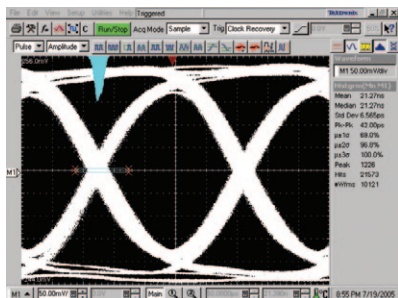
The information in this document is subject to change without notice and should not be construed as a commitment by Curtiss-Wright Controls Defense Solutions. While reasonable precautions have been taken, Curtiss-Wright assumes no responsibility for any errors that may appear in this document. All products shown or mentioned are trademarks or registered trademarks of their respective owners.

The GLX/SLX Port Cards provide the following unique features:

- ◆ Signal Detect
  - Counter for each port that records signal loss
- ◆ Digital Diagnostics
  - Transceiver information (Supported on the RT4000 and RT10000 Port Cards)
- ◆ Hot-swappable
  - Port cards and SFPs
- ◆ Zoning by user
  - Each port can be securely assigned a specific user

### Unmatched Signal Integrity!

All GLX/SLX port cards are rigorously tested to maintain the highest level of integrity. The 'eye' diagram below shows the consistent and robust 4G traffic after 9-hops through the 144 switch with the RT4000 port card!



© Copyright 2009, Curtiss-Wright Controls All Rights Reserved. MKTDS-GLX/SLX4000 Series Port Cards-020212v8



## Artisan Technology Group is your source for quality new and certified-used/pre-owned equipment

- FAST SHIPPING AND DELIVERY
- TENS OF THOUSANDS OF IN-STOCK ITEMS
- EQUIPMENT DEMOS
- HUNDREDS OF MANUFACTURERS SUPPORTED
- LEASING/MONTHLY RENTALS
- ITAR CERTIFIED SECURE ASSET SOLUTIONS

### SERVICE CENTER REPAIRS

Experienced engineers and technicians on staff at our full-service, in-house repair center

### *InstraView*<sup>SM</sup> REMOTE INSPECTION

Remotely inspect equipment before purchasing with our interactive website at [www.instraview.com](http://www.instraview.com) ↗

### WE BUY USED EQUIPMENT

Sell your excess, underutilized, and idle used equipment. We also offer credit for buy-backs and trade-ins. [www.artisanng.com/WeBuyEquipment](http://www.artisanng.com/WeBuyEquipment) ↗

### LOOKING FOR MORE INFORMATION?

Visit us on the web at [www.artisanng.com](http://www.artisanng.com) ↗ for more information on price quotations, drivers, technical specifications, manuals, and documentation

**Contact us:** (888) 88-SOURCE | [sales@artisanng.com](mailto:sales@artisanng.com) | [www.artisanng.com](http://www.artisanng.com)