



## Artisan Technology Group is your source for quality new and certified-used/pre-owned equipment

- FAST SHIPPING AND DELIVERY
- TENS OF THOUSANDS OF IN-STOCK ITEMS
- EQUIPMENT DEMOS
- HUNDREDS OF MANUFACTURERS SUPPORTED
- LEASING/MONTHLY RENTALS
- ITAR CERTIFIED SECURE ASSET SOLUTIONS

### SERVICE CENTER REPAIRS

Experienced engineers and technicians on staff at our full-service, in-house repair center

### *InstraView*<sup>SM</sup> REMOTE INSPECTION

Remotely inspect equipment before purchasing with our interactive website at [www.instraview.com](http://www.instraview.com) ↗

### WE BUY USED EQUIPMENT

Sell your excess, underutilized, and idle used equipment. We also offer credit for buy-backs and trade-ins. [www.artisanng.com/WeBuyEquipment](http://www.artisanng.com/WeBuyEquipment) ↗

### LOOKING FOR MORE INFORMATION?

Visit us on the web at [www.artisanng.com](http://www.artisanng.com) ↗ for more information on price quotations, drivers, technical specifications, manuals, and documentation

**Contact us:** (888) 88-SOURCE | [sales@artisanng.com](mailto:sales@artisanng.com) | [www.artisanng.com](http://www.artisanng.com)

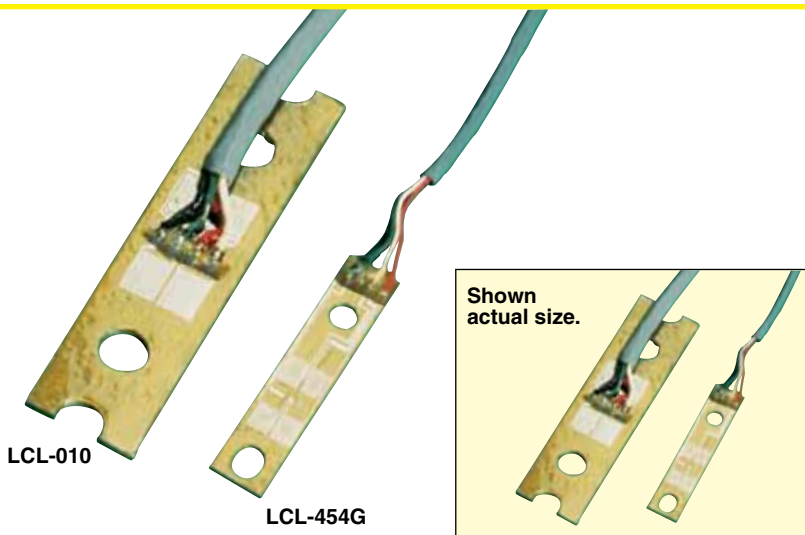
# FULL-BRIDGE THIN-BEAM LOAD CELLS

## FOR LOADS 0-113 g to 0-18 kgf

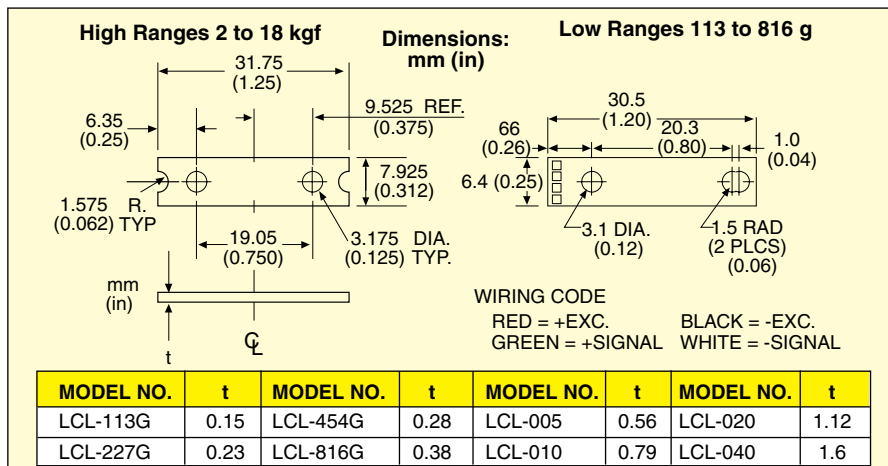
### LCL Series



- ✓ Measures Force or Displacement
- ✓ Thermally Matched, Fully Active, Full-Bridge Gage for Optimal Temperature Tracking



When frequent small-load measurements are required, OMEGA® LCL Series thin-beam load cells are the answer. The LCL Series is designed to measure many different parameters found in medical instrumentation, home appliances, process control, robotics, automotive, and other high-volume applications. A specially developed integrated strain gage includes all balancing, compensating, and conductive elements and is laminated to the beam to provide excellent stability and reliability.



### SPECIFICATIONS

- Excitation:** 5 Vdc, 12V max
- Rated Output:** 2 mV/V ±20% (to minimize ±20% tolerance, end user must calibrate with a known weight)
- Zero Balance:** 0.3 mV/V
- Combined Error:** 0.25% FS
- Operating Temperature:** -54 to 93°C (-65 to 200°F)
- Compensated Temperature:** -7 to 49°C (20 to 120°F)
- Temperature Effects:** Zero balance 0.02% FS/°F; output 0.02%/°F
- Resistance (Input and Output):** 1200 ±300 Ω
- Insulation Resistance:** 1000 @ 50 Vdc
- Seal:** Urethane coated
- Safe Overload:** 150% FS
- Full Scale Deflection:** 0.25 to 1.27 mm (0.010 to 0.050")
- Lead Wire:** 9" shielded PVC 4-conductor 30 AWG
- Material:**
  - >816 gf (2 lb): 301 SS
  - ≤816 gf (2 lb): Beryllium copper

**To Order Visit [omega.com/lcl](http://omega.com/lcl) for Pricing and Details**

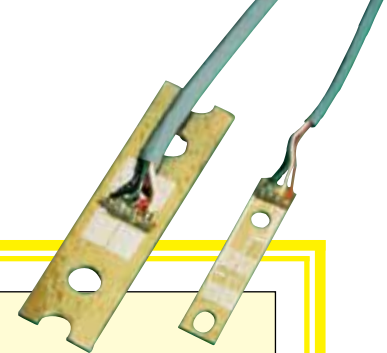
| CAPACITY             | MODEL NO.       | COMPATIBLE METERS       |
|----------------------|-----------------|-------------------------|
| 113 gf      0.25 lb  | <b>LCL-113G</b> | DP2000S5, DP25B-S, DPiS |
| 227 gf      0.5 lb   | <b>LCL-227G</b> | DP2000S5, DP25B-S, DPiS |
| 454 gf      1 lb     | <b>LCL-454G</b> | DP2000S5, DP25B-S, DPiS |
| 816 gf      2 lb     | <b>LCL-816G</b> | DP2000S5, DP25B-S, DPiS |
| 2.27 kgf      5 lb   | <b>LCL-005</b>  | DP2000S5, DP25B-S, DPiS |
| 4.54 kgf      10 lb  | <b>LCL-010</b>  | DP2000S5, DP25B-S, DPiS |
| 9.07 kgf      20 lb  | <b>LCL-020</b>  | DP2000S5, DP25B-S, DPiS |
| 18.14 kgf      40 lb | <b>LCL-040</b>  | DP2000S5, DP25B-S, DPiS |

### MOUNTING HARDWARE

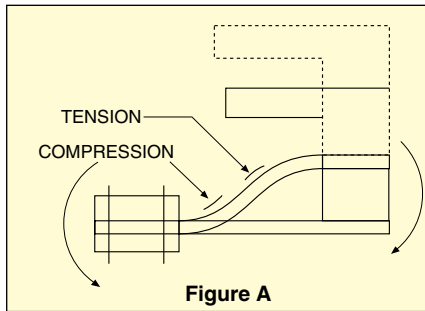
| MODEL NO.      | MOUNTING BRACKETS             |
|----------------|-------------------------------|
| <b>LCL-CL1</b> | For LCL-113G through LCL-816G |
| <b>LCM-CL1</b> | For LCL-005 through LCL-040   |

**Ordering Examples:** LCL-113G, beam and LCL-CL1, mounting bracket.  
 LCL-020, beam lead cell and LCM-CL1, mounting bracket.

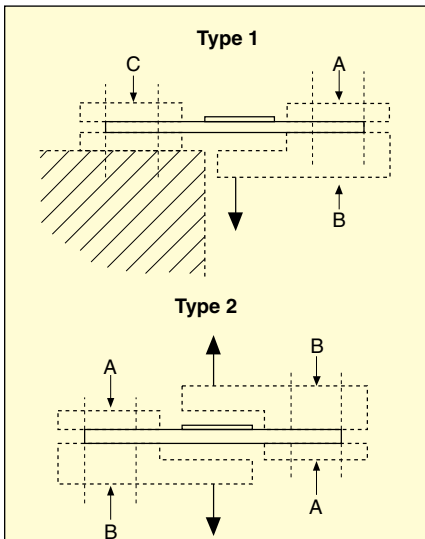
# INSTALLATION CONSIDERATIONS FOR THIN-BEAM LOAD CELLS



Careful design considerations must be taken into account when mounting OMEGA's LCL Series thin-beam load cells. The sensor's performance depends on the mechanical interface. All thin-beam load cells require mounting clamps to create a "double bend" during loading, as shown in Figure A. This illustration is exaggerated to show the clamp's effectiveness in producing opposing moments that create the double bend. An electrical output is generated as the double bend causes tension and compression on the sensor strain gage.



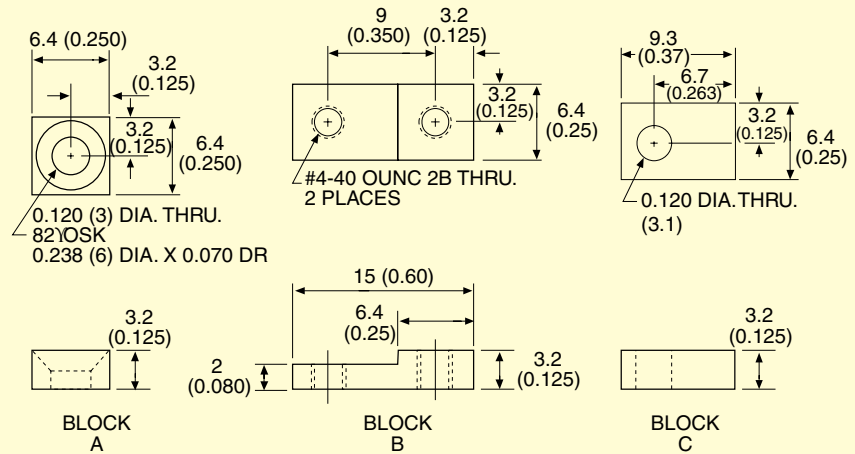
Two typical mounting arrangements are shown below. For high-accuracy applications, reinforcement plates should be slightly harder than the beam material, and the interfacing corners should be sharp. Because of low loads and sensor construction associated with the LCL113G through LCL-816G, in-line loading (Type 2) is not recommended.



## LCL-CL1 Mounting Kit

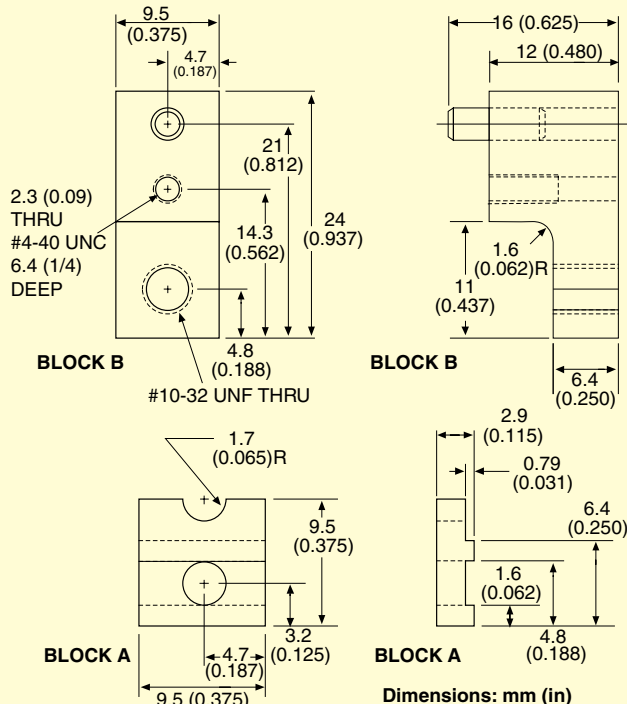
Mounting kit LCL-CL1 for thin-beam sensors LCL-113G through LCL-816G, Type 1 mounting only. Kit includes mounting blocks A, B, and C.

Dimensions: mm (in)



## LCM-CL1 Mounting Kit

Mounting kit LCM-CL1 for thin-beam sensors LCL-005 through LCL-040. Kit includes 4 mounting blocks, 2 each of blocks A and B. Type 2 mounting only.





## Artisan Technology Group is your source for quality new and certified-used/pre-owned equipment

- FAST SHIPPING AND DELIVERY
- TENS OF THOUSANDS OF IN-STOCK ITEMS
- EQUIPMENT DEMOS
- HUNDREDS OF MANUFACTURERS SUPPORTED
- LEASING/MONTHLY RENTALS
- ITAR CERTIFIED SECURE ASSET SOLUTIONS

### SERVICE CENTER REPAIRS

Experienced engineers and technicians on staff at our full-service, in-house repair center

### *InstraView*<sup>SM</sup> REMOTE INSPECTION

Remotely inspect equipment before purchasing with our interactive website at [www.instraview.com](http://www.instraview.com) ↗

### WE BUY USED EQUIPMENT

Sell your excess, underutilized, and idle used equipment. We also offer credit for buy-backs and trade-ins. [www.artisanng.com/WeBuyEquipment](http://www.artisanng.com/WeBuyEquipment) ↗

### LOOKING FOR MORE INFORMATION?

Visit us on the web at [www.artisanng.com](http://www.artisanng.com) ↗ for more information on price quotations, drivers, technical specifications, manuals, and documentation

**Contact us:** (888) 88-SOURCE | [sales@artisanng.com](mailto:sales@artisanng.com) | [www.artisanng.com](http://www.artisanng.com)