



Artisan Technology Group is your source for quality new and certified-used/pre-owned equipment

- FAST SHIPPING AND DELIVERY
- TENS OF THOUSANDS OF IN-STOCK ITEMS
- EQUIPMENT DEMOS
- HUNDREDS OF MANUFACTURERS SUPPORTED
- LEASING/MONTHLY RENTALS
- ITAR CERTIFIED SECURE ASSET SOLUTIONS

SERVICE CENTER REPAIRS

Experienced engineers and technicians on staff at our full-service, in-house repair center

*InstraView*SM REMOTE INSPECTION

Remotely inspect equipment before purchasing with our interactive website at www.instraview.com ↗

WE BUY USED EQUIPMENT

Sell your excess, underutilized, and idle used equipment. We also offer credit for buy-backs and trade-ins. www.artisanng.com/WeBuyEquipment ↗

LOOKING FOR MORE INFORMATION?

Visit us on the web at www.artisanng.com ↗ for more information on price quotations, drivers, technical specifications, manuals, and documentation

Contact us: (888) 88-SOURCE | sales@artisanng.com | www.artisanng.com

GLX4000

144 Port Physical Layer Switch

From the originators of the Physical Layer Switch with over nine years of experience, the GLX4000 features our 4th generation non-blocking, multi-protocol physical layer switch allowing any input to connect to any output. The GLX4000 is capable of switching any digital signal up to 4.25 Gb/s with any of its ports providing 1.2 Tb/s switching capacity - all in a compact 4U chassis!

Features

- ◆ Multi-protocol, multi-rate support
- ◆ Point-to-point (full or half duplex), multicast (1 to many), and loop (with auto loop feature) topologies
- ◆ Non-blocking, any input port to any output port
- ◆ Hot swappable port cards, power supplies, fans, and transceivers
- ◆ Options for signal regeneration when cascading switches
- ◆ Graphical User Interface (GUI) and Command Line
- ◆ Supports unlimited GUI and CLI (Telnet or SSH) sessions
- ◆ Alias names for each port and groups of ports

The GLX4000 switch is scalable by accepting up to three modular port cards with 48 ports per card. Two port card versions are available with small form factor pluggable (SFP) transceivers - non-retimed and retimed. Each SFP transceiver is hot-swappable and provides the physical ports for various media. Different types of SFP transceivers support a variety of network configurations. Another port card version accepts Firewire (1394B) signals directly at up to 1600 MB/s. Another port card accepts XFP transceivers for 10 GB/s protocols.

GLX4000 switches come equipped with hot-swappable power supplies, fans and port cards to allow users to quickly add or replace parts without impacting system up-time. A Compact Flash module acts as the unit's disk drive for the controller's CPU and can be removed for security reasons. The GLX4000 Linux[®] operating system, controlling firmware, and nonvolatile port configuration data reside on the module.

Figure 1: 144 Ports 4U



Learn More

Sales Info: cwcdefense.com/sales

Sales Email: defensesales@curtisswright.com

ABOVE & BEYOND

**CURTISS
WRIGHT** **Controls**
Defense Solutions

cwcdefense.com



Benefits

Automate Tests, Reduce Errors:

Establish a password protected connection via Ethernet (or EIA-232) and remotely change topologies and emulate optical power loss or cable breaks. Write scripts in PERL, TCL, or other scripting languages using the simple, but powerful CLI. Running the same scripts reduces human errors in wiring and configuration.

Share Expensive Resources, Save Money:

Buy fewer analyzers, sniffers, or data recorders. Connect these to the switch and share that resource among all users and departments.

Media Conversion:

Bring a signal in copper and go out optical. Change 850 nm optical to 1550 nm optical for DWDM applications.

Wire Once, Save Time:

Connect all the devices under test and then make all topology changes or fault tests with the switch via the GUI and CLI.

LXplorer™ GUI

The LXplorer Software greatly simplifies configuration management. Configurations can be saved and restored on-the-fly! LXplorer also provides the user with real-time monitoring of the unit's chassis and port cards.

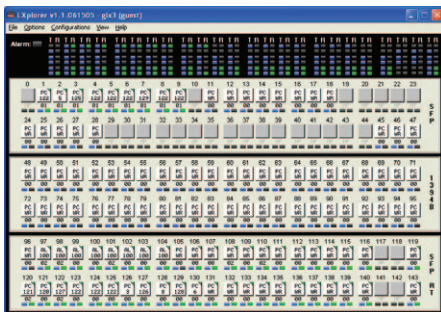
Real-time Switch Status and Control:

In the Physical View, the user can view and control all port connections on the switch. The user can also highlight connections by right-clicking on a given port.

Offline Drag and Drop Topologies Changes:

In the Logical View, the user is presented with a highly intuitive Windows® Explorer-like interface for creating and managing configurations. Drag and drop functionality makes topology changes a breeze. Configurations can be made, viewed, and saved offline without effecting the switch.

Figure 2: LXplorer Physical View



Unit Health Monitoring Made Easy:

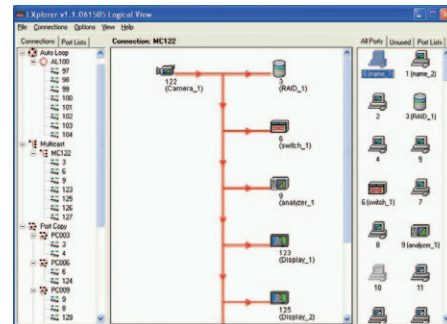
LXplorer allows the user to monitor the health of the switch chassis and port cards. For the chassis, temperature readings are available for the crosspoint, backplane, and controller card. Fan speeds are available as well. Historical data is also logged on a chart, allowing the user to determine the switch state during a specified period of time. For the port cards, the temperature and historical charts are similarly available. Other vital switch statistics are saved and available for review.

Command Line Interface

After logging into the switch via Telnet or SSH session, you can issue simple commands to change topology, emulate faults, and acquire unit health and status information. CLI commands are sent via a 10/100 Ethernet connection or an EIA-232 connection. The entire CLI instruction manual is built into every switch – just type 'h' for help.

- ◆ Change Topologies
 - Autoloop: Connect ports 13, 24, and 142 in an autoloop. If one port fails, the loop will 'heal' itself by eliminating the bad port. *al 0 13,24,142*
 - Port Copy: Connect port 2 to port 3 in a duplex mode. *cc 2,3*
 - Multicast: Connect the input of port 5 to the output of ports 6 through 10. *m 5 6-10*
- ◆ Emulate Faults
 - Output Enable: Turn off the output laser on ports 5 through 10. *oe 5-10 out*
 - Delay: Provides a delay between commands in a script file. Example below waits 250 milliseconds. *msleep 250*
- ◆ Health and Status Information
 - Port list: List configuration of all ports in a table or list. *p all or st all*
 - Chassis information: List vital statistics, output enable counts, signal detect counts, etc. *bc (ie. Box control)*
 - Check for changes: Determine if any changes have been made to the switch. *check*
 - "Smart" SFP information: Provide information about a SFP transceiver *11. sfp 11*

Figure 3: LXplorer Logical View





Artisan Technology Group is your source for quality new and certified-used/pre-owned equipment

- FAST SHIPPING AND DELIVERY
- TENS OF THOUSANDS OF IN-STOCK ITEMS
- EQUIPMENT DEMOS
- HUNDREDS OF MANUFACTURERS SUPPORTED
- LEASING/MONTHLY RENTALS
- ITAR CERTIFIED SECURE ASSET SOLUTIONS

SERVICE CENTER REPAIRS

Experienced engineers and technicians on staff at our full-service, in-house repair center

*InstraView*SM REMOTE INSPECTION

Remotely inspect equipment before purchasing with our interactive website at www.instraview.com ↗

WE BUY USED EQUIPMENT

Sell your excess, underutilized, and idle used equipment. We also offer credit for buy-backs and trade-ins. www.artisanng.com/WeBuyEquipment ↗

LOOKING FOR MORE INFORMATION?

Visit us on the web at www.artisanng.com ↗ for more information on price quotations, drivers, technical specifications, manuals, and documentation

Contact us: (888) 88-SOURCE | sales@artisanng.com | www.artisanng.com