



Artisan Technology Group is your source for quality new and certified-used/pre-owned equipment

- FAST SHIPPING AND DELIVERY
- TENS OF THOUSANDS OF IN-STOCK ITEMS
- EQUIPMENT DEMOS
- HUNDREDS OF MANUFACTURERS SUPPORTED
- LEASING/MONTHLY RENTALS
- ITAR CERTIFIED SECURE ASSET SOLUTIONS

SERVICE CENTER REPAIRS

Experienced engineers and technicians on staff at our full-service, in-house repair center

*InstraView*SM REMOTE INSPECTION

Remotely inspect equipment before purchasing with our interactive website at www.instraview.com ↗

WE BUY USED EQUIPMENT

Sell your excess, underutilized, and idle used equipment. We also offer credit for buy-backs and trade-ins. www.artisanng.com/WeBuyEquipment ↗

LOOKING FOR MORE INFORMATION?

Visit us on the web at www.artisanng.com ↗ for more information on price quotations, drivers, technical specifications, manuals, and documentation

Contact us: (888) 88-SOURCE | sales@artisanng.com | www.artisanng.com

HCU1500 and HCU400 Modular Controllers for PathTrak Performance Monitoring System

- ◆ *Scaleable and flexible architecture*
- ◆ *Self-contained data analysis and storage*

The HCU Modular Controller is the essential part of the PathTrak Performance Monitoring System. It provides the communications gateway to and from the Master System Controller (Server PC) and remote monitoring equipment. In addition, the HCU provides housing for PathTrak monitoring modules, memory for data storage, and an on-board processor for intelligent analysis and control of monitored data.

The HCU communicates to the Master System Controller to notify users of system alarms and status. Users can also initiate contact to the HCU through the Master System Controller, or locally, to interactively

control and view monitoring system data. Largely due to the design of the HCU, the PathTrak Performance Monitoring System is an extremely scalable system, maintaining high performance in large deployment, and cost effectiveness in low deployments.

Modular Platform Provides Scalable Housing

The housing of the HCU is an industry standard VME chassis. Each HCU has a specific number of slots available for PathTrak monitoring system modules and cards (i.e. the RPM1000 Monitoring Module). Users are able to construct a system that contains the number and kind of modules to meet their specific needs



HCU1500 and HCU400 - PRELIMINARY

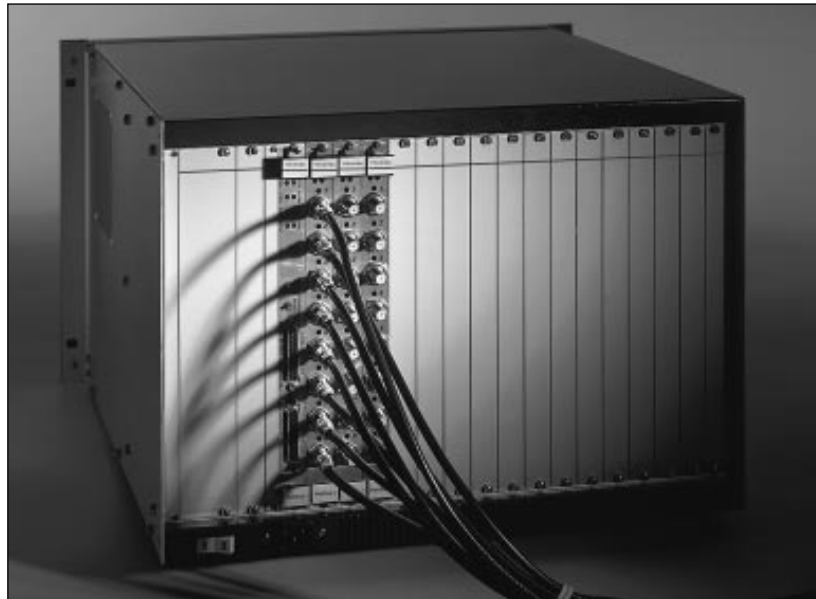


Figure 1: Rear view of HCU1500 with 3 RPM1000 modules installed.

today, which reduces initial investment costs. Then, as user network architectures grow and needs change, new modules and capability can easily be added.

Intelligence and Data Storage in HCU Improve System Performance

Each HCU contains a 2GB hard drive module for storage of monitored performance, and a single board computer module card for intelligent analysis in the chassis itself. Once monitoring plans are established by the user and downloaded to the HCU, the HCU is a completely self-managed unit. With so much on-board processing power so close to

the monitoring modules, data storage and analysis is much faster, and more extensive intelligence and higher overall system performance is possible. Also, since all data storage and analysis is performed in the HCU, communication to the Master System Controller (Server PC) is only required to communicate system status and alarms. Thus, multiple HCUs deployed in multiple remote sites can all perform at equally high performance, and will not be restricted by communication links to a central PC controller. This also minimizes network traffic over user's LAN or data communications networks.

Flexible Communications

Each HCU contains multiple types of communication ports — RS232 serial ports, parallel port, 10/100 baseT Ethernet port and an optional telephone modem. Through these ports, the HCU will support multiple connections, enabling communication to and from multiple devices and providing local and remote troubleshooting simultaneously. The 10/100 baseT Ethernet connection is recommended for remote access to support the highest speed data transfer.



Close-up of modules on back of the HCU1500.

Specifications

HCU400:

Physical:

Width: 19" rack mountable

Height: 4 rack units (6.968 in., 176.9mm)

Weight: 25 lbs. maximum

Module capacity:

4 available slots for monitoring module cards

Module card mounting orientation:

Horizontal

Data storage capacity: 2GB

Processor:

Motorola Power PC single board computer CE marked

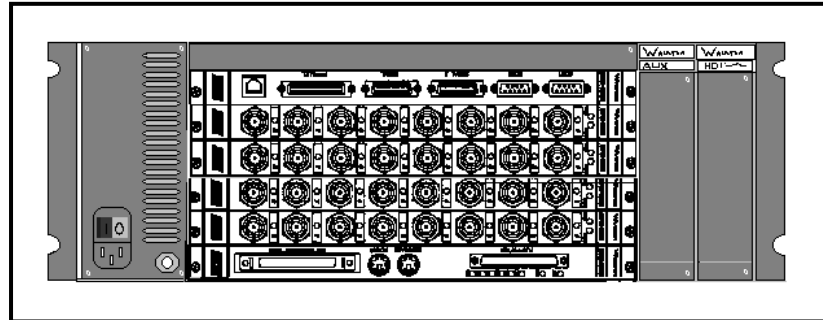
Communication ports:

four serial RS232, one 10/100 baseT Ethernet, one Parallel port

Power supply:

AC auto-ranging 90-132VAC / 180-264VAC @ 47-63Hz

Operational Temperature range: 0-50°C



Schematic of rear view of HCU400 with four RPM1000 modules installed.

HCU1500:

Physical:

Width: 19" rack mountable

Height: 7 rack units (12.219 in., 310.4mm)

Weight: 35 lbs. maximum

Module capacity:

15 available slots for monitoring module cards

Module card mounting orientation:

Vertical

Data storage capacity: 2GB

Processor:

Motorola Power PC single board computer CE marked

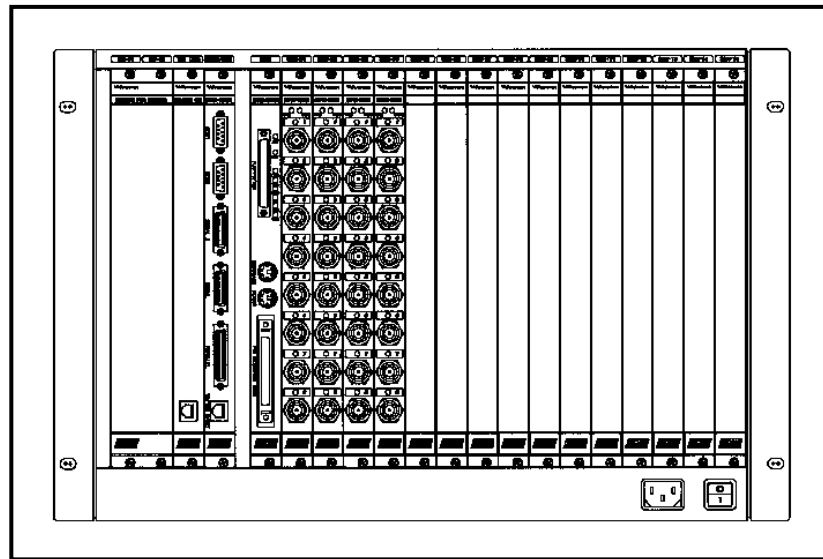
Communication ports:

four serial RS232, one 10/100 baseT Ethernet, one Parallel port

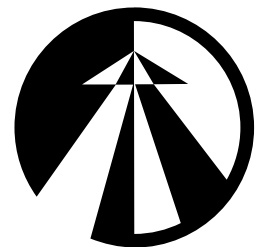
Power supply:

AC auto-ranging 90-132VAC / 180-264VAC @ 47-63Hz

Operational Temperature range: 0-50°C



Schematic of the rear view of the HCU1500 with four RPM1000 modules installed.



Worldwide Sales Offices

Austria

Wavetek Ges.mbH
Pharos Haus
Nordbahnstrasse 36/TOP 1.4
A-1020 Vienna, Austria
Tel: (43) 1-21451-10
Fax: (43) 1-21451-09

China

Wavetek Corporation
Room 2701, Citic Building
No. 19 Jianguomenwai Dajie
Beijing, China 100004
Tel: (86) 10-6592-8044; (86) 10-6500-2255
Fax: (86) 10-6500-8199

France

Immeuble le Seine St Germain
12, Bd des iles
Bat B 3ème étage
92130 Issy Les Moulineaux, France
Tel: (33) 1-41-90-6666
Fax: (33) 1-41-90-6650

Germany

Wavetek GmbH
Gutenbergstrasse 2-4
85737 Ismaning, Germany
Tel: (49) 89-99641-0
Fax: (49) 89-99641-160

Hong Kong

Wavetek Hong Kong Ltd.
3A, HKPC Building
78 Tat Chee Avenue
Kowloon, Hong Kong
Tel: (852) 2788-6221
Fax: (852) 2788-6220

Japan

YOKOGAWA-Wavetek Corporation
Product Marketing Department
Measuring Instruments Division
155 Takamuro-cho, Kofu-shi,
Yamanashi-ken, 400 Japan
Tel: (81) 0552-43-0310
Fax: (81) 0552-43-0396

Singapore

Wavetek Asia-Pacific Pte. Ltd.
51 Goldhill Plaza
#14-04/05
Singapore 1130
Tel: (65) 356-2522
Fax: (65) 356-2553

United Kingdom

Wavetek Ltd.
Hurricane Way
Norwich, Norfolk NR6 6JB
Tel: (44) 1603-256600
Fax: (44) 1603-483670

United States

Wavetek Corporation
5808 Churchman Bypass
Indianapolis, IN 46203-6109
Tel: (1) 317-788-9351
Fax: (1) 317-782-4607

Specifications are subject to change without notice
Printed in the U.S.A. on recycled paper
© Wavetek Corporation, 1998

World Wide Web: www.wavetek.com
For Sales Support: catvsales@wavetek.com
For Technical Support:
catvsupport@wavetek.com
For Customer Service:
catvrepair@wavetek.com



Artisan Technology Group is your source for quality new and certified-used/pre-owned equipment

- FAST SHIPPING AND DELIVERY
- TENS OF THOUSANDS OF IN-STOCK ITEMS
- EQUIPMENT DEMOS
- HUNDREDS OF MANUFACTURERS SUPPORTED
- LEASING/MONTHLY RENTALS
- ITAR CERTIFIED SECURE ASSET SOLUTIONS

SERVICE CENTER REPAIRS

Experienced engineers and technicians on staff at our full-service, in-house repair center

*InstraView*SM REMOTE INSPECTION

Remotely inspect equipment before purchasing with our interactive website at www.instraview.com ↗

WE BUY USED EQUIPMENT

Sell your excess, underutilized, and idle used equipment. We also offer credit for buy-backs and trade-ins. www.artisanng.com/WeBuyEquipment ↗

LOOKING FOR MORE INFORMATION?

Visit us on the web at www.artisanng.com ↗ for more information on price quotations, drivers, technical specifications, manuals, and documentation

Contact us: (888) 88-SOURCE | sales@artisanng.com | www.artisanng.com