



Artisan Technology Group is your source for quality new and certified-used/pre-owned equipment

- FAST SHIPPING AND DELIVERY
- TENS OF THOUSANDS OF IN-STOCK ITEMS
- EQUIPMENT DEMOS
- HUNDREDS OF MANUFACTURERS SUPPORTED
- LEASING/MONTHLY RENTALS
- ITAR CERTIFIED SECURE ASSET SOLUTIONS

SERVICE CENTER REPAIRS

Experienced engineers and technicians on staff at our full-service, in-house repair center

*InstraView*SM REMOTE INSPECTION

Remotely inspect equipment before purchasing with our interactive website at www.instraview.com ↗

WE BUY USED EQUIPMENT

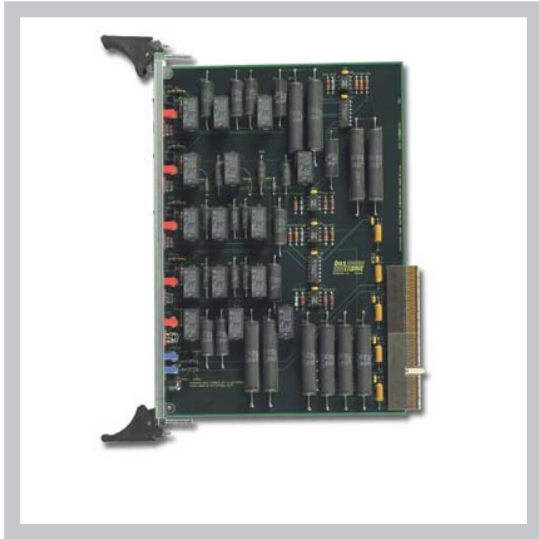
Sell your excess, underutilized, and idle used equipment. We also offer credit for buy-backs and trade-ins. www.artisanng.com/WeBuyEquipment ↗

LOOKING FOR MORE INFORMATION?

Visit us on the web at www.artisanng.com ↗ for more information on price quotations, drivers, technical specifications, manuals, and documentation

Contact us: (888) 88-SOURCE | sales@artisanng.com | www.artisanng.com

COMPACTPCI LOAD BOARD



FEATURES

- Conforms to mechanical and electrical connections of PICMG basic specification 2.0 R3.0
- Useful for system thermal and power characterizations
- Aids in locating hot spots in the chassis
- Visual GO-NO-GO indicators for each voltage, indicating +/-5% of nominal
- Primary voltage test points are V I/O, PRST#, FAIL#, and GND
- Power supply loading varied with binary switches in front panel

BOARD SPECIFICATIONS

- 2-layer stripline design
- 2 oz. copper power and ground
- PCB UL recognized 94-V0
- PCB FR-4 or equivalent
- PCB .062" thick

MECHANICAL SPECIFICATIONS

- 6U x 160mm

DESCRIPTION

The CompactPCI Load Board from Elma Bustronic is designed to be compliant with PICMG mechanical and electrical standards.

Predominantly used by chassis manufacturers and system developers, the 6U cPCI Load Board provides significant time and expense savings by assuring a system's operating specifications. The load board functions to test a system's cooling capabilities by first applying the load to the power supply for verification and finally creating the necessary heat to confirm chassis cooling. By locating hot spots in the chassis, a system designer can verify where to optimally redirect the airflow to prevent overheating. Increasing productivity, the load board quickly and accurately assists in characterizing systems at low cost.

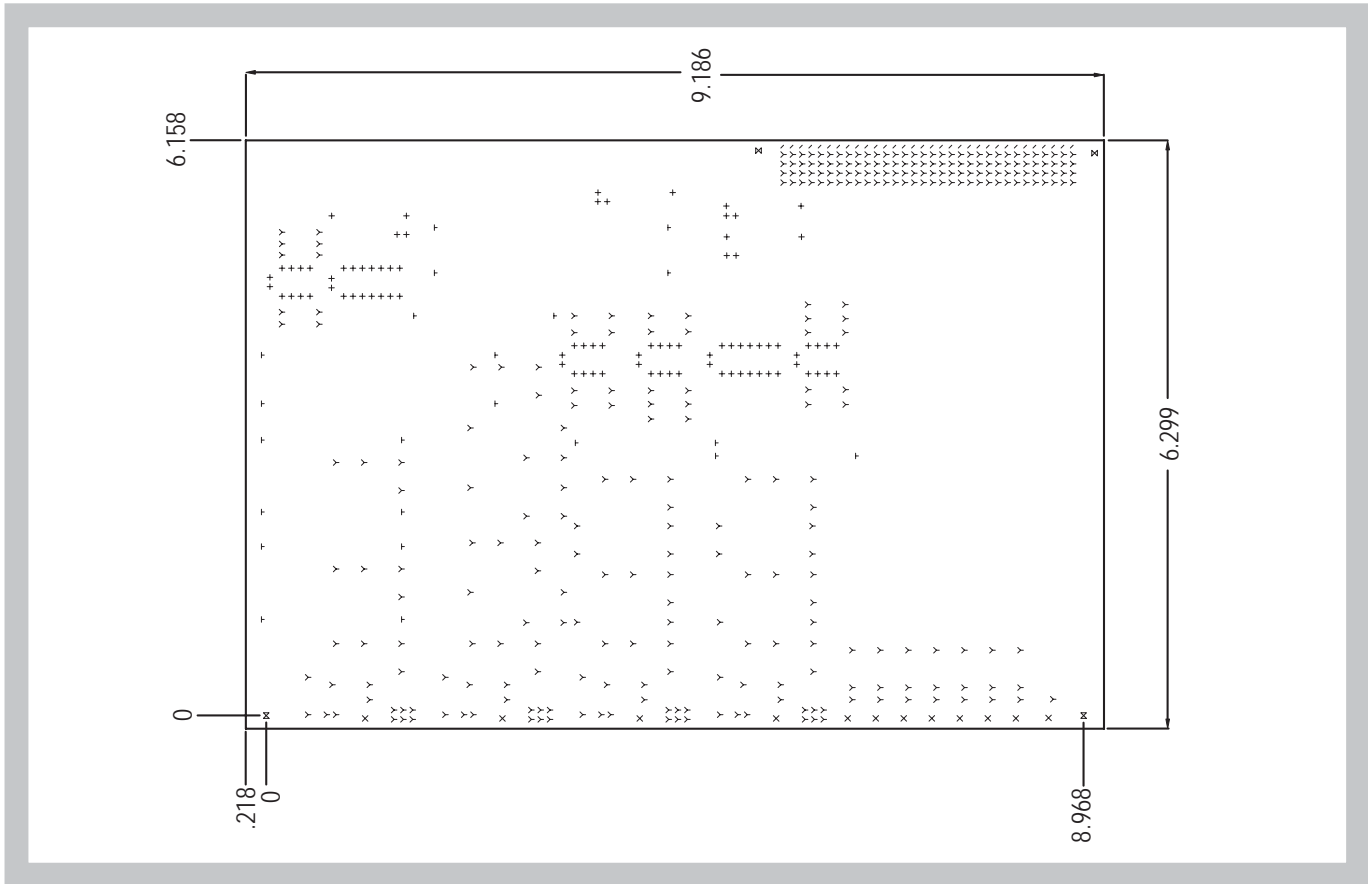
Other key performance characteristics of the cPCI Load Board include visual "GO - NO GO" indicators for each voltage (+5V, +3.3V, +12V, and -12V) displaying that the voltage is within ± 5 percent of nominal. The other primary test points are V I/O, PRST#, FAIL#, and GND. In addition, the load board offers power supply loading that utilizes binary switches to impose a load ranging from 0 to 7 amps of the primary load. This feature is also used for thermal characterization.

TEST POINT CHART

Switch	+5V	+3.3V	+12V	-12V	V I/O:+5V	V I/O:+3.3V
000	off	off	off	off	off	off
001	1 A	1 A	0.1 A	0.1 A	5.0 A	3.3 A
010	2 A	2 A	0.2 A	0.2 A	2.5 A	1.7 A
011	3 A	3 A	0.3 A	0.3 A	7.5 A	5.0 A
100	4 A	4 A	0.4 A	0.4 A	1.3 A	0.8 A
101	5 A	5 A	0.5 A	0.5 A	6.3 A	4.1 A
110	6 A	6 A	0.6 A	0.6 A	3.8 A	2.5 A
111	7 A	7 A	0.7 A	0.7 A	8.8 A	5.8 A

COMPACTPCI LOAD BOARD

LINE DRAWING



ORDER INFORMATION

Height	Length	Part Number
6U	160mm	1940000135-0000



Artisan Technology Group is your source for quality new and certified-used/pre-owned equipment

- FAST SHIPPING AND DELIVERY
- TENS OF THOUSANDS OF IN-STOCK ITEMS
- EQUIPMENT DEMOS
- HUNDREDS OF MANUFACTURERS SUPPORTED
- LEASING/MONTHLY RENTALS
- ITAR CERTIFIED SECURE ASSET SOLUTIONS

SERVICE CENTER REPAIRS

Experienced engineers and technicians on staff at our full-service, in-house repair center

*InstraView*SM REMOTE INSPECTION

Remotely inspect equipment before purchasing with our interactive website at www.instraview.com ↗

WE BUY USED EQUIPMENT

Sell your excess, underutilized, and idle used equipment. We also offer credit for buy-backs and trade-ins. www.artisanng.com/WeBuyEquipment ↗

LOOKING FOR MORE INFORMATION?

Visit us on the web at www.artisanng.com ↗ for more information on price quotations, drivers, technical specifications, manuals, and documentation

Contact us: (888) 88-SOURCE | sales@artisanng.com | www.artisanng.com