



## Artisan Technology Group is your source for quality new and certified-used/pre-owned equipment

- FAST SHIPPING AND DELIVERY
- TENS OF THOUSANDS OF IN-STOCK ITEMS
- EQUIPMENT DEMOS
- HUNDREDS OF MANUFACTURERS SUPPORTED
- LEASING/MONTHLY RENTALS
- ITAR CERTIFIED SECURE ASSET SOLUTIONS

### SERVICE CENTER REPAIRS

Experienced engineers and technicians on staff at our full-service, in-house repair center

### *InstraView*<sup>SM</sup> REMOTE INSPECTION

Remotely inspect equipment before purchasing with our interactive website at [www.instraview.com](http://www.instraview.com) ↗

### WE BUY USED EQUIPMENT

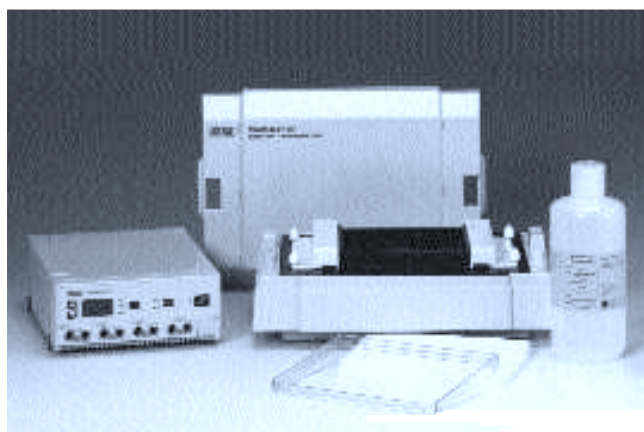
Sell your excess, underutilized, and idle used equipment. We also offer credit for buy-backs and trade-ins. [www.artisanng.com/WeBuyEquipment](http://www.artisanng.com/WeBuyEquipment) ↗

### LOOKING FOR MORE INFORMATION?

Visit us on the web at [www.artisanng.com](http://www.artisanng.com) ↗ for more information on price quotations, drivers, technical specifications, manuals, and documentation

**Contact us:** (888) 88-SOURCE | [sales@artisanng.com](mailto:sales@artisanng.com) | [www.artisanng.com](http://www.artisanng.com)

# DNA/RNA Blotting with the Trans-Blot® SD Semi-Dry Electrophoretic Transfer Cell



The Trans-Blot SD DNA/RNA agarose gel support frame, used with the Trans-Blot SD semi-dry electrophoretic transfer cell, allows blotting of DNA/RNA from agarose gels to nylon membrane in minutes, without any gel pretreatments. The Trans-Blot SD semi-dry electrophoretic transfer cell generates a high field strength ( $V/cm^2$ ) which facilitates rapid transfers. The blotting frame allows highly efficient transfers by eliminating crushing of agarose gels.

## DNA Transfers in 10 Minutes

PCR\* fragments, plasmid, and vector DNA ranging in size from several hundred bases to 15 kilobases can now be quickly transferred in as little as 10 minutes. Set-up time is reduced to just minutes because hydrolyzation of DNA fragments is not required prior to transfer.

## RNA Transfers in 30–35 Minutes

The agarose gel support frame can also be used to transfer RNA up to 3.5 kb in 30–35 minutes, although transfer of 28s rRNA is equally efficient as determined by EtBr staining.<sup>1</sup>

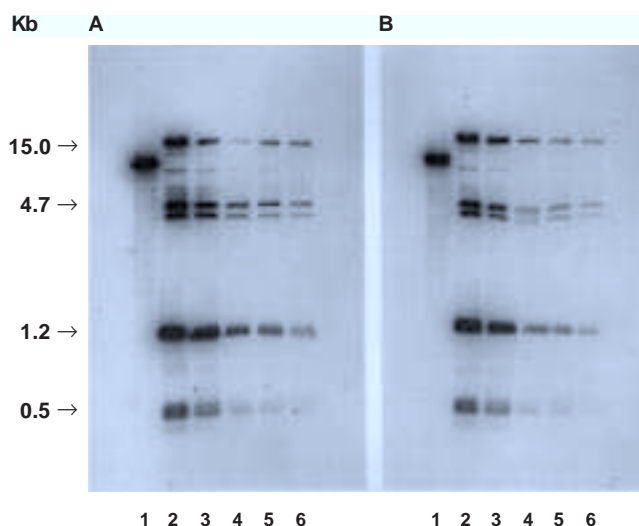
## Northern and Southern Blotting

The agarose gel support frame will accommodate 6 mm thick agarose gels up to 15 x 20 cm. Table 1 shows the volumes of agarose required for each gel size.

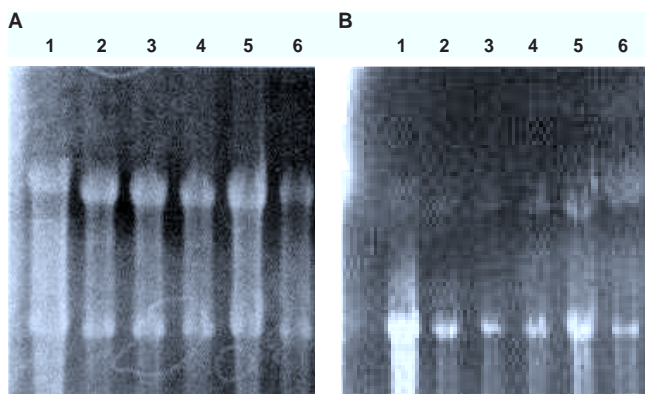
Table 1. Agarose Volumes

Gel Dimensions (cm)	Volume Agarose (ml)
7 x 10	42
10 x 15	90
15 x 15	135
15 x 20	180

For convenience, 10x TBE and TAE premixed buffers are available. Extra thick, 2.6 mm, filter paper is necessary to provide enough buffer for transfer. The extra thick blot paper must be identical to the dimensions of the agarose gel. Bio-Rad's extra thick blot paper is available in four sizes: 7.5 x 10 cm, 10 x 15 cm, 15 x 15 cm, and 15 x 20 cm. Use of any other type of blot paper will decrease transfer efficiency.



**Fig. 1. Trans-Blot SD DNA/RNA blotting kit transfer of lambda DNA fragments.** A. 10 minute transfer, B. 25 minute transfer of digests of lambda DNA (NEB) and pL-lambda (left promoter of lambda, Pharmacia). Fragment sizes were 15 kb, 4.7 kb, 1.2 kb, and 0.5 kb. Lanes contain: 1. DNA high range standard (Bio-Rad); 2. 100 ng of lambda DNA digest; 3. 50 ng; 4. 10 ng; 5. 1 ng; 6. 500 pg. DNA was electrophoresed in a 0.7% agarose TBE gel, stained, and blotted in the Trans-Blot SD semi-dry electrophoretic transfer cell. Blots were hybridized (7% SDS, 0.5 M NaPO<sub>4</sub>, pH 8.0, 1mM EDTA) overnight at 65 °C with labeled probe ( $1 \times 10^6$  cpm/ml of buffer). The probe was produced by random primer labeling (Bio-Rad) of lambda PL promoter (GenBlock, Pharmacia) with 50  $\mu$ Ci of alpha <sup>32</sup>P dCTP (3,000 Ci/mM, Amersham) having a specific activity of  $8.2 \times 10^8$  dpm/ $\mu$ g.



**Fig. 2†. TGF- $\beta$  induced elastin expression in porcine vascular smooth muscle cells<sup>1</sup>: electrophoretic blotting using Trans-Blot SD semi-dry electrophoretic transfer cell and the Trans-Blot SD DNA/RNA blotting kit.** Total RNA was extracted and processed for hybridization.<sup>1</sup> Each lane contained ~ 9  $\mu$ g of total RNA. Confluent cultures of smooth muscle cells were treated with 5 ng/ml recombinant human transforming growth factor- $\beta$ 1 (TGF- $\beta$ ). Lanes 1 - 6 for all panels are: (1) Positive control, total RNA from neonatal porcine thoracic aorta; (2) 0 hr after TGF- $\beta$ ; (3) 2 hr after TGF- $\beta$ ; (4) 6 hr after TGF- $\beta$ ; (5) 8 hr after TGF- $\beta$ ; (6) 12 hr after TGF- $\beta$ . **A.** Gel after EtBr staining and 0.5x TBE equilibration. **B.** Membrane after 35 minute electrophoretic blotting at 3 mA/cm<sup>2</sup>. The differential transfer seen between the 28s and 18s ribosomal bands can be lessened by extending the run 5-6 min. **C.** Autoradiograph of membrane filter hybridized with a [<sup>32</sup>P]-cDNA probe for elastin. Numbers indicate arbitrary densitometric units.

## References

1. Lane, K, Zoia, O. and Davidson, J M., *Biotechniques*, **12**, 3, 340-346 (1992).
2. Trans-Blot Instruction Manual.

## Ordering Information

Catalog Number	Product Description
----------------	---------------------

### Support Frame

170-4019 Agarose Gel Support Frame, 16 x 21 cm

### DNA/RNA Blotting Kit Accessories

170-3965 Extra Thick Blot Paper, 7.5 x 10 cm, 60

170-3958 Extra Thick Blot Paper, 10 x 15 cm, 30

170-3959 Extra Thick Blot Paper, 15 x 15 cm, 30

170-3960 Extra Thick Blot Paper, 15 x 20 cm, 30

### Trans-Blot SD Electrophoretic Transfer Cells

170-3940 Trans-Blot SD Semi-Dry Electrophoretic Transfer Cell, complete unit

170-3948 Trans-Blot SD System, 100/120 V, includes Trans-Blot SD semi-dry electrophoretic transfer cell and PowerPac 200 Power Supply

170-3949 Trans-Blot SD System, 220/240 V

### Power Supplies

165-5052 PowerPac 200 Power Supply, 100/120 V

165-5053 PowerPac 200 Power Supply, 220/240 V

### Zeta-Probe® GT Blotting Membrane

162-0191 Sheets, 10 x 15 cm, 15

162-0192 Sheets, 15 x 15 cm, 15

162-0193 Sheets, 15 x 20 cm, 15

### Premixed Buffers

161-0733 10x Tris/ Boric Acid/ EDTA, 1 L

161-0756 10x Tris/ Boric Acid/ EDTA, 6 x 1 L

161-0743 50x TBS/ Acetic Acid/ EDTA, 1 L

161-0759 50x Tris/ Acetic Acid/ EDTA, 6 x 1 L

For more information call your local Bio-Rad representative.

† Used with permission of Kirk Lane, Vanderbilt University, Nashville, TN.

\* Practice of PCR is covered by U.S. patent numbers 4,683,195, 4,683,202, and 4,899,818 issued to Cetus Corporation which is a subsidiary of Hoffmann-LaRoche Molecular Systems, Inc. Purchase of any of Bio-Rad's PCR-related products does not convey a license to use the PCR process covered by these patents; the user of these products to perform PCR must obtain a license.



Bio-Rad  
Laboratories

Life Science  
Group

Website: [www.bio-rad.com](http://www.bio-rad.com) Bio-Rad Laboratories Main Office: 2000 Alhambra Drive, Hercules, CA 94547, Ph: (510) 747-7000, Fx: (510) 747-5800  
 Also in: Australia Ph: (0) 9974 2800, Fx: (0) 9974 2889 Austria Ph: (0) 87789 01, Fx: (0) 876 5629 Belgium Ph: (0) 385 55 77, Fx: (0) 385 65 54  
 Canada Ph: (905) 772-2777, Fx: (905) 772-2390 China Ph: 86-70-62057050, Fx: 86-70-62057076 Denmark Ph: 45 39 7799 47, Fx: 45 39 27 76 98  
 Finland Ph: 358 (0) 904 2200 Fx: 358 (0) 904 7700 France Ph: (0) 43 90 4690, Fx: (0) 46 77 24 67 Germany Ph: 089 378 84-0, Fx: 089 378 84-700  
 Hong Kong Ph: 852-2700-3300, Fx: 852-2700-2257 India Ph: 91-7-71467-0703, Fx: 91-7-71467-0765 Israel Ph: 03 957 4727, Fx: 03 957 4729  
 Italy Ph: 02 27609 7, Fx: 02 27609 399 Japan Ph: 03-6877-6270, Fx: 03-6877-6272 Korea Ph: 82-2-3473-4460, Fx: 82-2-3473-7000  
 The Netherlands Ph: 37 378-640806, Fx: 37 378-642276 New Zealand Ph: 61-9-4752200, Fx: 61-9-4752284  
 Singapore Ph: 65-2729877, Fx: 65-2734838 Spain Ph: (97) 667 70 85, Fx: (97) 667 96 98 Sweden Ph: 46 (0) 8 62750 00, Fx: 46 (0) 8 62754 00  
 Switzerland Ph: 01-809 55 55, Fx: 01-809 55 00 United Kingdom Ph: 0800-787734, Fx: 01462-259778



## Artisan Technology Group is your source for quality new and certified-used/pre-owned equipment

- FAST SHIPPING AND DELIVERY
- TENS OF THOUSANDS OF IN-STOCK ITEMS
- EQUIPMENT DEMOS
- HUNDREDS OF MANUFACTURERS SUPPORTED
- LEASING/MONTHLY RENTALS
- ITAR CERTIFIED SECURE ASSET SOLUTIONS

### SERVICE CENTER REPAIRS

Experienced engineers and technicians on staff at our full-service, in-house repair center

### *InstraView*<sup>SM</sup> REMOTE INSPECTION

Remotely inspect equipment before purchasing with our interactive website at [www.instraview.com](http://www.instraview.com) ↗

### WE BUY USED EQUIPMENT

Sell your excess, underutilized, and idle used equipment. We also offer credit for buy-backs and trade-ins. [www.artisanng.com/WeBuyEquipment](http://www.artisanng.com/WeBuyEquipment) ↗

### LOOKING FOR MORE INFORMATION?

Visit us on the web at [www.artisanng.com](http://www.artisanng.com) ↗ for more information on price quotations, drivers, technical specifications, manuals, and documentation

**Contact us:** (888) 88-SOURCE | [sales@artisanng.com](mailto:sales@artisanng.com) | [www.artisanng.com](http://www.artisanng.com)