

CDS 53A-145

Differential Chaining Card (8-bit Parallel)



In Stock

Used and in Excellent Condition

Open Web Page

<https://www.artisanng.com/54989-8>

All trademarks, brandnames, and brands appearing herein are the property of their respective owners.



Your **definitive** source
for quality pre-owned
equipment.

Artisan Technology Group

(217) 352-9330 | sales@artisanng.com | artisanng.com

- Critical and expedited services
- In stock / Ready-to-ship

- We buy your excess, underutilized, and idle equipment
- Full-service, independent repair center

Artisan Scientific Corporation dba Artisan Technology Group is not an affiliate, representative, or authorized distributor for any manufacturer listed herein.

53A-145 DIFFERENTIAL CHAINING CARD

OPERATING MANUAL

© Copyright 1990 by
Colorado Data Systems, Inc.
A Subsidiary of Tektronix
Englewood, CO 80110
All rights reserved.

Printed in U.S.A.

WARRANTY

Colorado Data Systems, Inc. (CDS) products (hardware and firmware) are warranted against defects in materials and workmanship, and are warranted to meet the performance specifications as listed in the current catalog and/or data sheet for the specific product being warranted. This warranty applies for three (3) years following the date of shipment. CDS will, at its option, repair or replace, at no cost to the customer, products which prove to be defective during the warranty period, provided the defect or failure is not due to misuse or abuse of the product. The customer is responsible for shipment of the defective product to the CDS factory. Software products are supplied on a site license basis subject to the same performance warranty provisions; the materials and distribution provision applies to the distribution media only. NO OTHER WARRANTY IS EXPRESSED OR IMPLIED, INCLUDING WARRANTY FOR FITNESS OF PURPOSE. CDS SHALL, IN NO CASE, BE LIABLE FOR CONSEQUENTIAL DAMAGES.

53A-145 DIFFERENTIAL CHAINING CARD

OPERATING MANUAL

DESCRIPTION	1
CONTROLS AND INDICATORS	
Power LED	1
Fuse	1
I/O LED	1
Data LEDs (B0 - B7)	1
SPECIFICATIONS	2
INSTALLATION	4

53A-145 DIFFERENTIAL CHAINING CARD

DESCRIPTION

The 53A-145 Differential Chaining Card is a printed circuit board assembly for use in a CDS 53A system. This card provides a differential communication link between the card cage it is plugged into, and the next card cage in a chained system.

The Chaining Card allows data transfer rates of 500,000 ASCII characters (8-bit parallel) per second up to a distance of 1,000 feet.

CONTROLS AND INDICATORS

The following controls and indicators are provided to select and display the functions of the 53A-145 Card's operating environment.

Power LED

The Power LED provides a valuable diagnostic tool by giving the system programmer a visual indication of the action which the system is currently taking. Whenever the 53A-145 Card is addressed by the system controller, the Power LED goes out. The LED remains out until another function card is addressed. Since only one function card can be addressed at a time, an unlit Power LED indicates the function card with which the system controller is currently communicating. The Power LED being lit not only indicates that the 53A-145 Card is unaddressed, but that all required dc power (5V dc, $\pm 15V$ dc) is being supplied.

Fuse

The 5 Volt dc power bus has a fuse that protects the system from overloads. If the fuse has blown, the Power LED will not light.

I/O LED

The I/O LED will be lit when the system is in input and out when in output. As a matter of convention input means data being input by the system controller.

Data LEDs (B0 - B7)

Below the I/O LED is a column of eight LED's, labeled from top to bottom B0 through B7. These LED's display the current data word that is being either received or transmitted by the Chaining Card. The least significant bit is B0.

SPECIFICATIONS

<u>Differential Drivers/Receivers:</u>	TI 75119
<u>Differential Impedance:</u>	130 ohms.
<u>Protocol:</u>	ASCII 8-bit parallel.
<u>Chaining Distance:</u>	300 meters.
<u>Data Rate:</u>	500,000 ASCII characters per second.
<u>Power Requirements:</u>	<p>The 5V power is provided by a 53A-060 power supply located in the 53A-002 Card Cage.</p> <p>Voltage: 4.75V to 5.25V DC. Current: 0.95 amperes, maximum quiescent. 0.98 amperes, peak.</p>
<u>Cooling:</u>	Provided by the fan in the 53A-002 Card Cage.
<u>Temperature:</u>	<p>-10°C to +65°C, operating (assumes ambient temperature of 55° and airflow to assure less than 10°C temperature rise). -40°C to +85°C, storage.</p>
<u>Humidity:</u>	<p>Less than 95% R.H. non-condensing, -10°C to +30°C. Less than 75% R.H. non-condensing, +31°C to +40°C. Less than 45% R.H. non-condensing, +41°C to +55°C.</p>
<u>Dimensions:</u>	197mm High, 220mm Deep, 13mm Wide. (7.75" X 8.66" X 0.5")
<u>Dimensions, Shipping:</u>	<p>When ordered with a 53A-002 Card Cage this card will be plugged into the Card Cage Chaining slot.</p> <p>When ordered alone the shipping dimensions are: 254mm X 254mm X 127mm. (10" X 10" X 5")</p>
<u>Weight:</u>	0.23 Kg. (0.5 lbs.)
<u>Weight, Shipping:</u>	<p>When ordered with a 53A-002 Card Cage this card will be plugged into the Card Cage Chaining slot.</p> <p>When ordered alone the shipping weight is: 0.64 Kg. (1.4 lbs.)</p>

Mounting Position:

Any orientation.

Mounting Location:

Plugs into the Chaining slot of the 53A-002 Card Cage.

Output Connections:

53A-743 cable.

Equipment Required:

Communications Card, Control Card and mainframe.

Equipment Supplied:

53A-145 Chaining Card.
Spare fuse, (part #42202-54001).
Operating manual, (part #00000-11450).
Service manual, (part #00000-21450).

INSTALLATION

The 53A-145 Chaining Card must be installed in the red chaining slot.

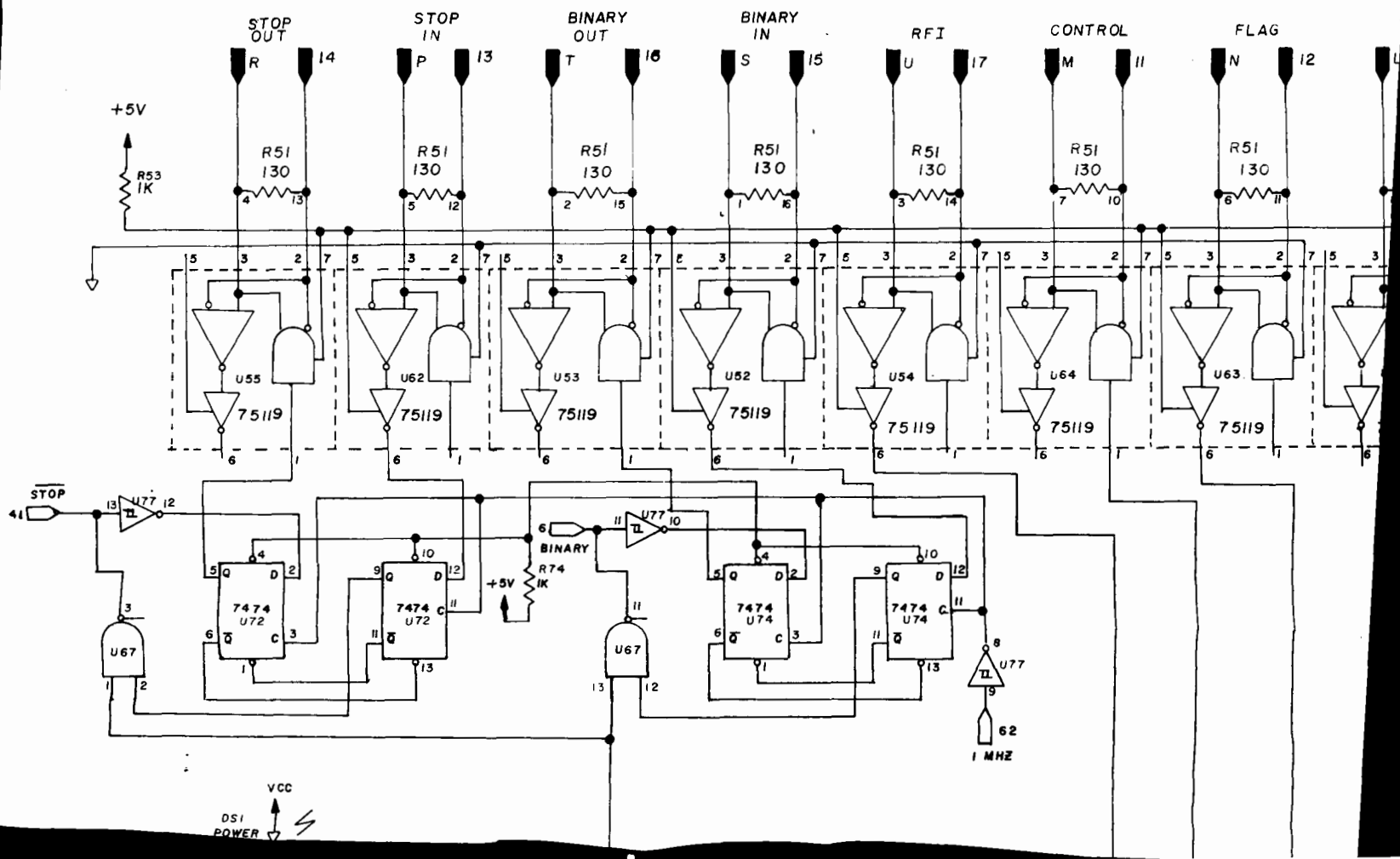
CAUTION:

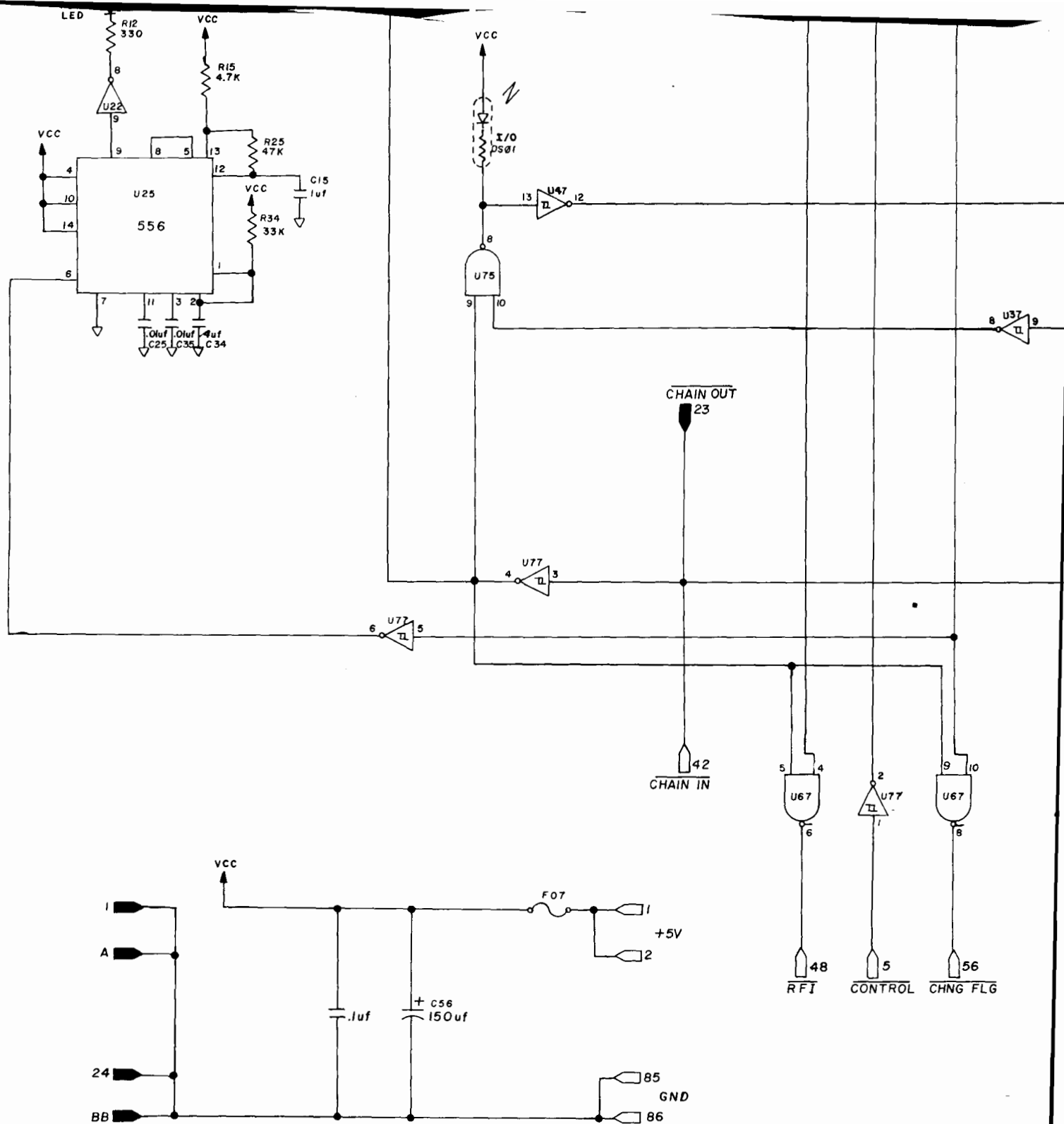
To avoid plugging the card in backwards, observe the following:

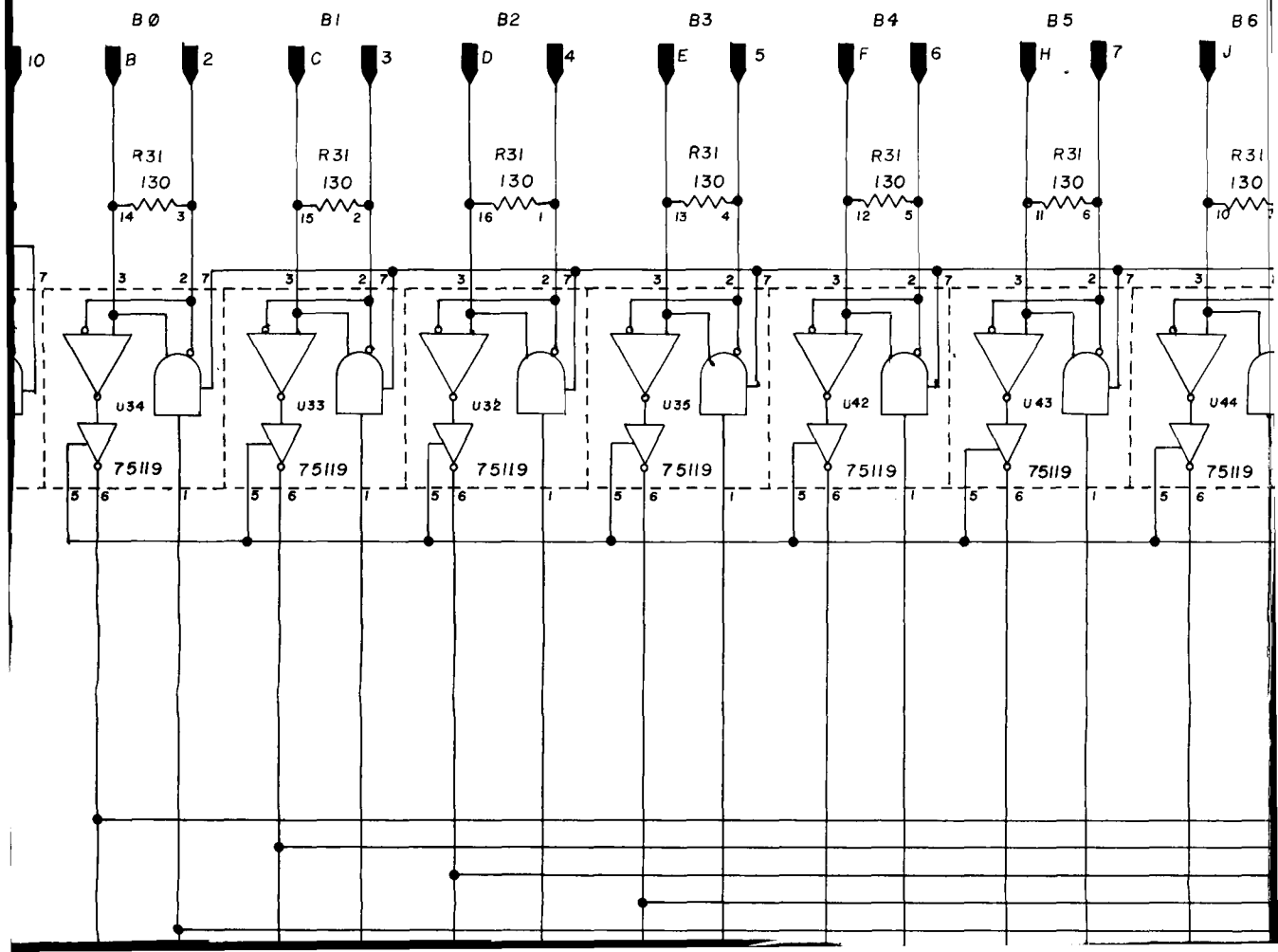
- a. Match the keyed slot on the card to the key in the backplane connector. The component side should be to the right for a 53 Series Chassis and to the top for a 63 Series Chassis.
- b. There are two ejectors on the card. Make sure the ejector marked "53A-145" is at the top for a 53 Series Chassis and to the left for a 63 Series Chassis.

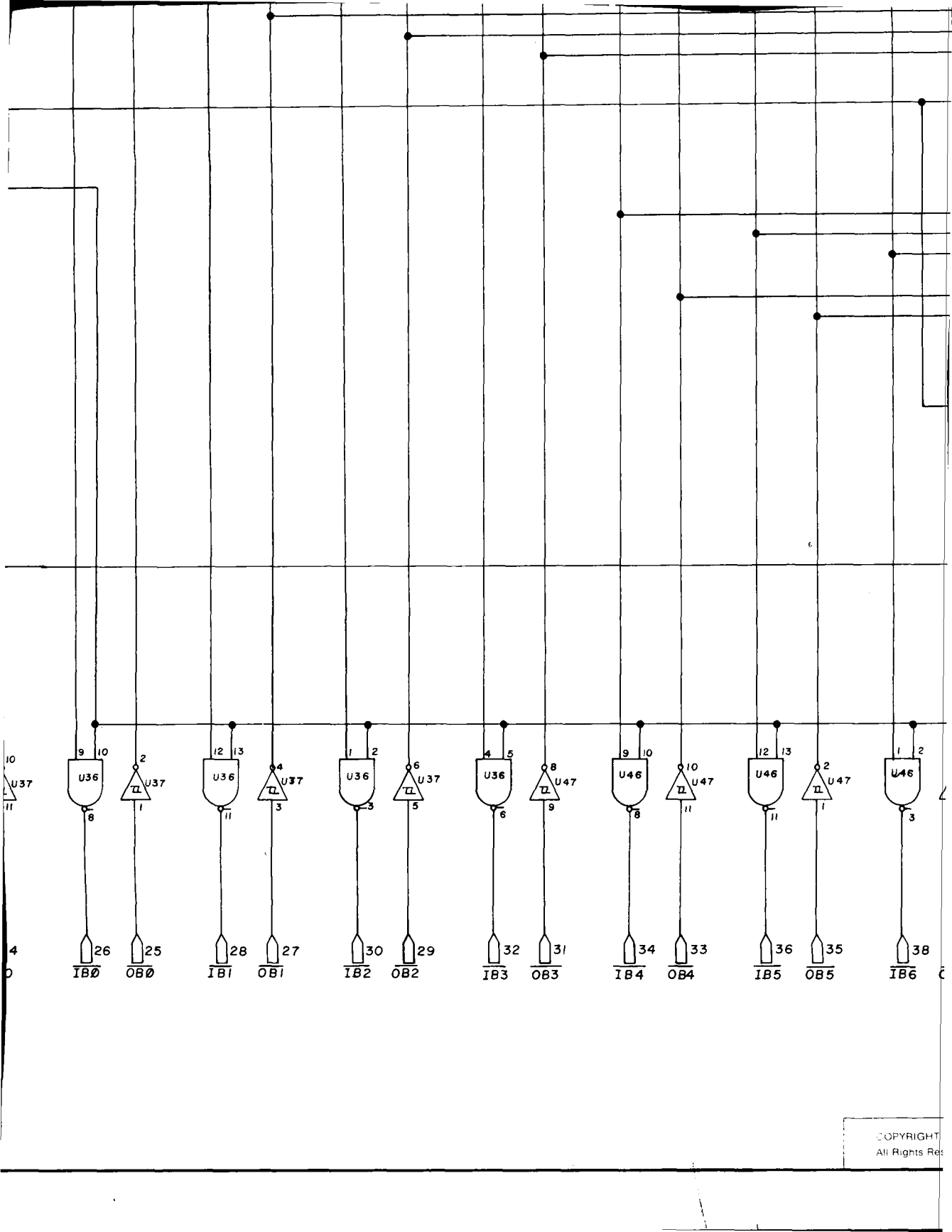
CAUTION:

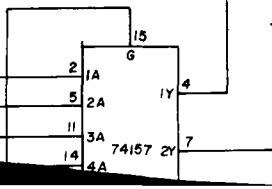
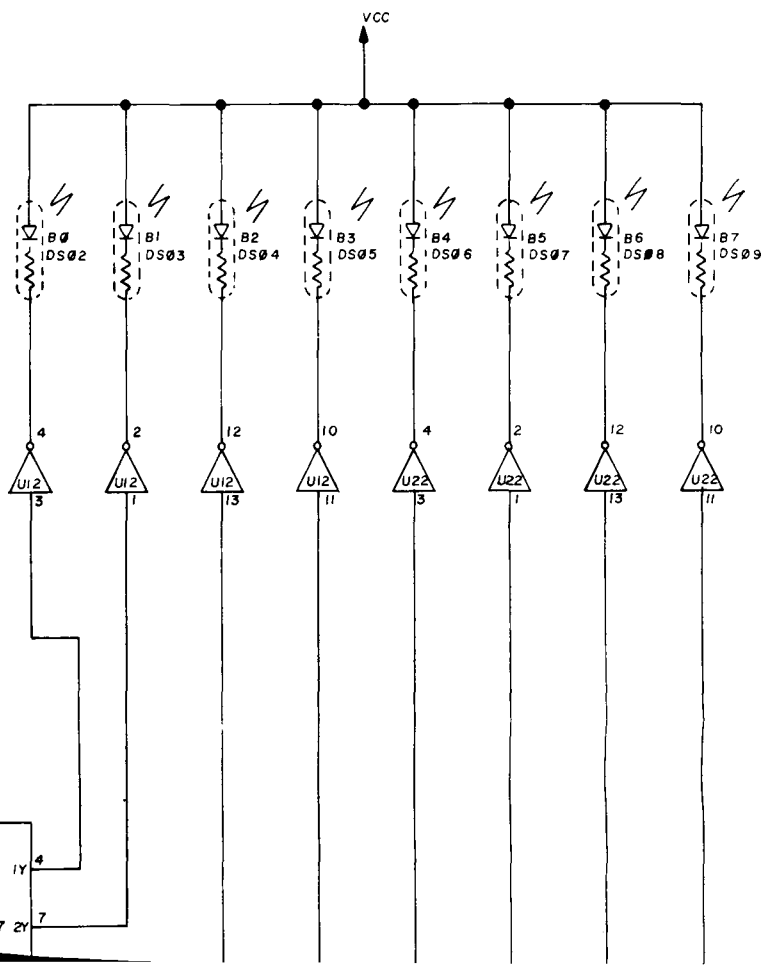
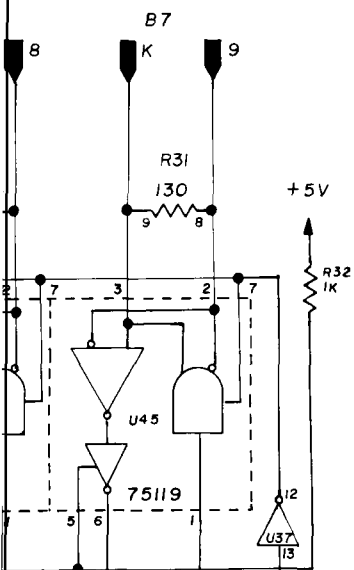
The 53A-145 Card is a piece of electronic equipment and therefore has some susceptibility to electrostatic damage (ESD). ESD precautions must be taken whenever the module is handled.

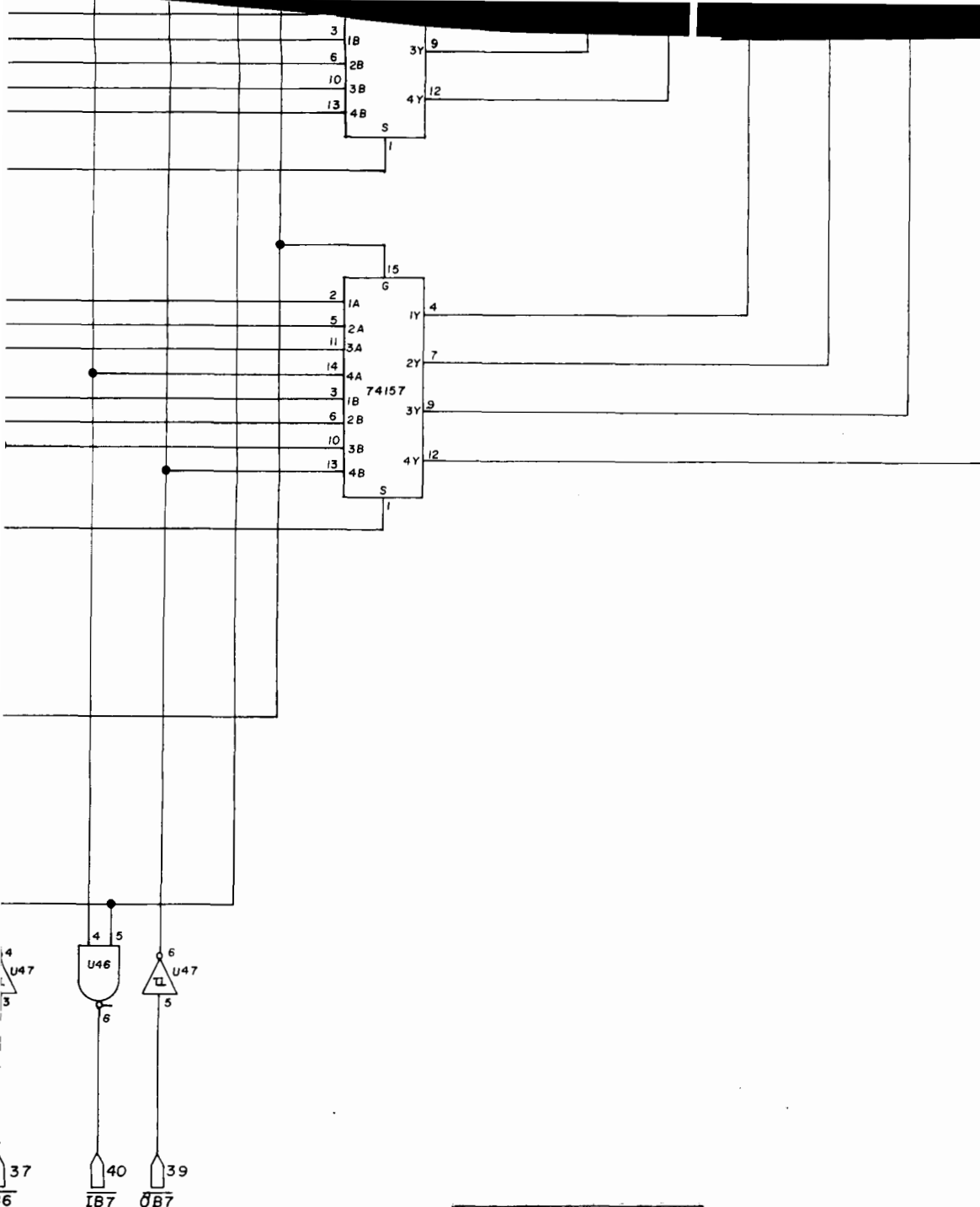












COPYRIGHT © 1989 CDS
ALL RIGHTS RESERVED

7812-01-A

53A-145
CHAINING CARD

Computer Data Systems
ved

DATE

DATE

DATE



DATE

DATE

DATE

Artisan Technology Group is an independent supplier of quality pre-owned equipment

Gold-standard solutions

Extend the life of your critical industrial, commercial, and military systems with our superior service and support.

We buy equipment

Planning to upgrade your current equipment? Have surplus equipment taking up shelf space? We'll give it a new home.

Learn more!

Visit us at [artisanTG.com](https://www.artisanTG.com) for more info on price quotes, drivers, technical specifications, manuals, and documentation.

Artisan Scientific Corporation dba Artisan Technology Group is not an affiliate, representative, or authorized distributor for any manufacturer listed herein.

We're here to make your life easier. How can we help you today?

(217) 352-9330 | sales@artisanTG.com | [artisanTG.com](https://www.artisanTG.com)

