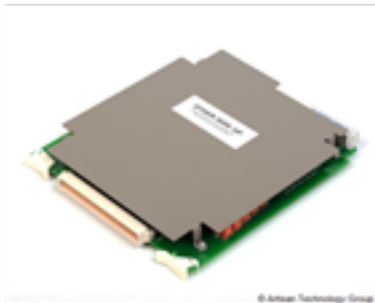


Agilent N2261A

40-Channel General Purpose Relay Switch



In Stock

Used and in Excellent Condition

Open Web Page

<https://www.artisanng.com/72392-2>

All trademarks, brandnames, and brands appearing herein are the property of their respective owners.



Your **definitive** source
for quality pre-owned
equipment.

Artisan Technology Group

(217) 352-9330 | sales@artisanng.com | artisanng.com

- Critical and expedited services
- In stock / Ready-to-ship

- We buy your excess, underutilized, and idle equipment
- Full-service, independent repair center

Artisan Scientific Corporation dba Artisan Technology Group is not an affiliate, representative, or authorized distributor for any manufacturer listed herein.

40-channel General-purpose Relay Module

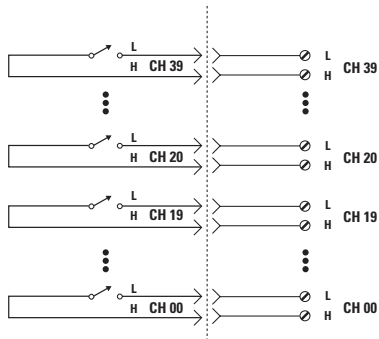
Agilent N2261A

- 40 independent relays in one module
- High-speed switching in parallel operation
- Built-in relay cycle counters

The N2261A general-purpose relay module provides 40 independent single-pole-single-throw (SPST) latching relays. Each channel can switch up to 200 V, 1 A, and 60 W or 62.5 VA. The innovative parallel driving circuits allow 10 channels to be operated simultaneously for high throughput. It can be operated in either SCPI mode or 3488A mode.

A pair of signals can be switched together by using a pair of channels on two N2261A modules. The N2261A can be operated in single-channel break-before-make (BBM) or multiple-channel open/close mode. Screw terminal block, and DIN96-to-D25/50 cables are available to simplify wiring.

N2261A GP Relay Module Terminal Block



Specifications

General Specifications	
Relays:	Armature latching relay
Thermal Offset:	<3 μ V
Relay Life	
Mechanical:	10 ⁸
Electrical:	5x10 ⁵ (at 1 A load)
Maximum Scan Rate: 80 Chan/sec	
Input Characteristics	
Maximum Voltage:	200 V
Maximum Current:	
Per channel	1 A
Per module	20 A
Maximum Power:	
Per channel	60 W or 62.5 VA
Per module	1200 W or 1250 VA
Initial Closed Channel Resistance:	<0.5 Ω
DC Isolation	
Open Channel, Channel-Channel:	
<(40 $^{\circ}$ C, 50% RH) >10 ¹⁰ Ω	
Channel-Chassis:	
<(40 $^{\circ}$ C, 50% RH) >10 ¹⁰ Ω	

AC Isolation	
Capacitance (with 1 channel closed):	
Open Channel	Channel-Channel <10 pF
	Channel-Chassis <20 pF
Insertion Loss (with 50 Ω termination):	
100 kHz	<0.10 dB
1 MHz	<0.20 dB
10 MHz	<0.50 dB
Crosstalk (with 50 Ω termination):	
100 kHz	<-70 dB
1 MHz	<-50 dB
10 MHz	<-30 dB
Module Accessories	
N2291A	Screw terminal block
N2297A	DIN-to-Twin-D50 cable
Note: All voltage and current are in DC or AC RMS if not specified.	

Artisan Technology Group is an independent supplier of quality pre-owned equipment

Gold-standard solutions

Extend the life of your critical industrial, commercial, and military systems with our superior service and support.

We buy equipment

Planning to upgrade your current equipment? Have surplus equipment taking up shelf space? We'll give it a new home.

Learn more!

Visit us at [artisanng.com](https://www.artisanng.com) for more info on price quotes, drivers, technical specifications, manuals, and documentation.

Artisan Scientific Corporation dba Artisan Technology Group is not an affiliate, representative, or authorized distributor for any manufacturer listed herein.

We're here to make your life easier. How can we help you today?

(217) 352-9330 | sales@artisanng.com | [artisanng.com](https://www.artisanng.com)

