

PCB Piezotronics 623C00

High Frequency Industrial ICP Accelerometer



\$250.00

In Stock

Qty Available: 2

Used and in Excellent Condition

Open Web Page

<https://www.artisanTG.com/50613-1>



Your **definitive** source
for quality pre-owned
equipment.

Artisan Technology Group

(217) 352-9330 | sales@artisanTG.com | artisanTG.com

All trademarks, brandnames, and brands appearing herein are the property of their respective owners.

- Critical and expedited services
- In stock / Ready-to-ship
- We buy your excess, underutilized, and idle equipment
- Full-service, independent repair center

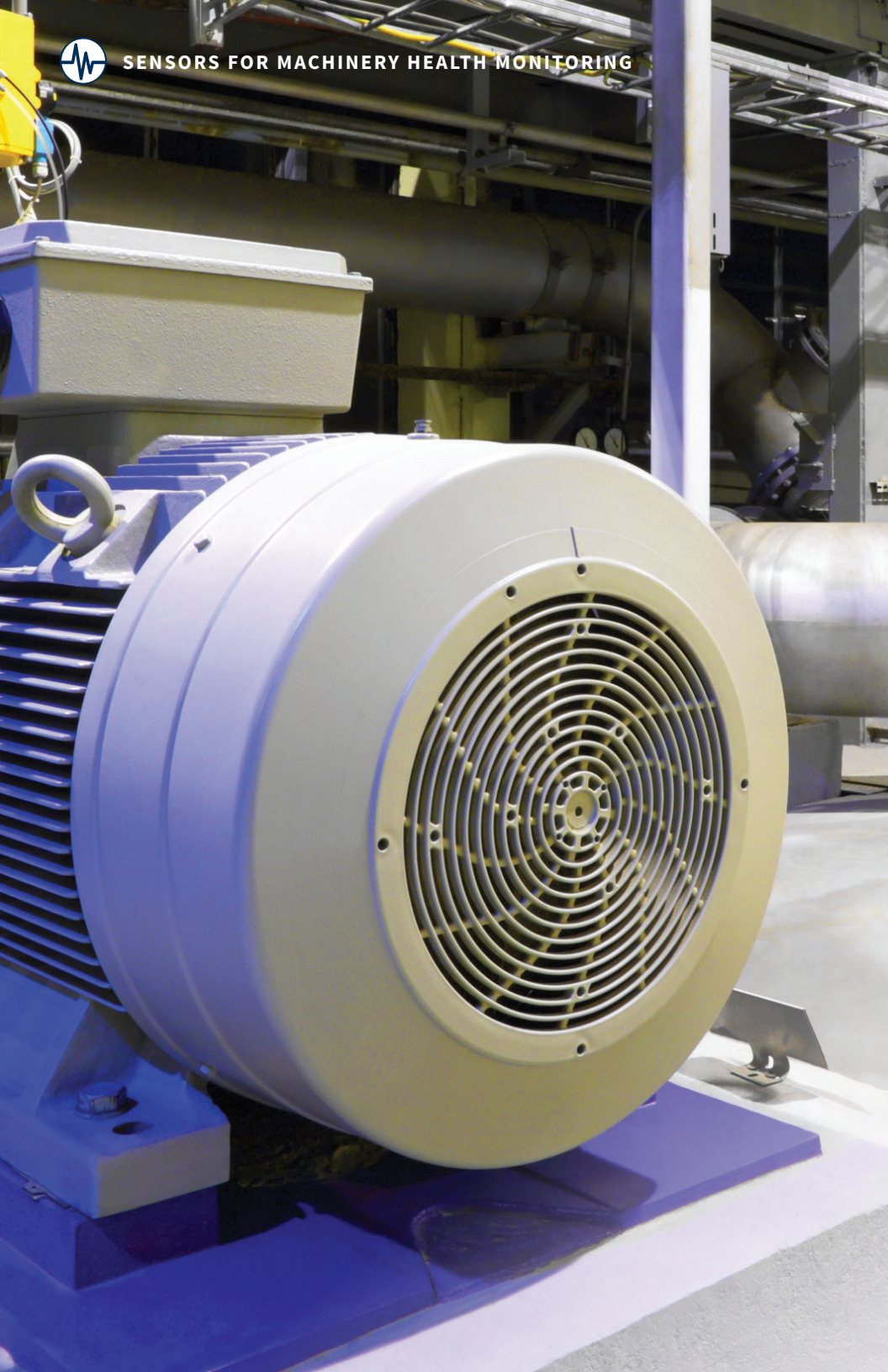
Artisan Scientific Corporation dba Artisan Technology Group is not an affiliate, representative, or authorized distributor for any manufacturer listed herein.



SENSOR KITS

Measurable savings on our most popular sensors and accessories







Save time and money with our predefined kits of the most commonly used industrial ICP® accelerometers and accessories. Let us take the guess work out of it!

With these Sensor Kits*, monitor essential equipment and have inventory on hand when needed. Ideal for condition based monitoring, high temperature monitoring, and wet environments or submerged applications.

* For U.S. customers only. For orders outside the U.S., please contact your local representative. Volume discounts are valid in the U.S. only.



TOP-EXIT, BASIC CONDITION MONITORING SENSOR KIT

Model 603C01 features a compact housing and small footprint.

PRODUCTS INCLUDED:

ICP® Accelerometer (Model 603C01)

Top exit ICP® accelerometer with ceramic element, 100 mV/g sensitivity, 0.5 to 10k Hz frequency range ($\pm 3\text{dB}$) and 2-pin connector. Operates in environments up to 250 °F.

Cable (Model 052BRXXXBZ)

Polyurethane-jacketed cables in options of 10ft/20ft/30ft/50ft length with a 2-socket MIL-C-5015 connector on one end and a blunt cut termination on the other end.

Mounting Pad (Model 080A118)

1 in diameter stainless steel mounting pads with a ¼-28 tapped hole.

Switch Box (Model 691B41/691010)

Centralized data collection point in fiberglass enclosure with individual PGME07 cord grips.

Adhesive Kit (Model 075A05)

Epoxy adhesive kit is intended for mounting sensors.



SENSOR KIT	CABLE LENGTH OPTIONS (XXX)	LIST PRICE	BUNDLE PRICE	SAVINGS
6-CHANNEL				
600A42/XXX (6) Model 603C01 (6) Model 052BRXXBZ (6) Model 080A118 (1) Model 691B41/691010 (1) Model 075A05	10 ft	\$1,443.80	\$1,155.04	\$288.76
	20 ft	\$1,525.40	\$1,220.32	\$305.08
	30 ft	\$1,607.00	\$1,285.60	\$321.40
	50 ft	\$1,770.20	\$1,416.16	\$354.04
12-CHANNEL				
600A43/XXX (12) Model 603C01 (12) Model 052BRXXBZ (12) Model 080A118 (1) Model 691B41/691010 (1) Model 075A05	10 ft	\$2,267.60	\$1,814.08	\$453.52
	20 ft	\$2,430.80	\$1,944.64	\$486.16
	30 ft	\$2,594.00	\$2,075.20	\$518.80
	50 ft	\$2,920.40	\$2,336.32	\$584.08



SIDE-EXIT, BASIC CONDITION MONITORING SENSOR KIT

Model 602D01 features a low-profile, through-bolt design.

PRODUCTS INCLUDED:

ICP® Accelerometer (Model 602D01)

Side exit ICP® accelerometer with ceramic element, 100 mV/g sensitivity, 0.5 to 8k Hz frequency range ($\pm 3\text{dB}$) and 2-pin connector. Operates in environments up to 250 °F.

Cable (Model 052BR020BZ)

Polyurethane-jacketed cables in options of 10ft/20ft/30ft/50ft length with a 2-socket MIL-C-5015 connector on one end and a blunt cut termination on the other end.

Mounting Pad (Model 080A118)

1 in diameter stainless steel mounting pads with a ¼-28 tapped hole.

Switch Box (Model 691B41/691010)

Centralized data collection point in fiberglass enclosure with individual PGME07 cord grips.

Adhesive Kit (Model 075A05)

Epoxy adhesive kit is intended for mounting sensors.



SENSOR KIT	CABLE LENGTH OPTIONS (XXX)	LIST PRICE	BUNDLE PRICE	SAVINGS
6-CHANNEL				
600A40/XXX (6) Model 602D01 (6) Model 052BR020BZ (6) Model 080A118 (1) Model 691B41/691010 (1) Model 075A05	10 ft	\$1,666.30	\$1,333.04	\$333.26
	20 ft	\$1,747.90	\$1,398.32	\$349.58
	30 ft	\$1,829.50	\$1,463.60	\$365.90
	50ft	\$1,992.70	\$1,594.16	\$398.54
12-CHANNEL				
600A41/XXX (12) Model 602D01 (12) Model 052BR020BZ (12) Model 080A118 (1) Model 691B41/691010 (1) Model 075A05	10 ft	\$2,838.10	\$2,270.48	\$567.62
	20 ft	\$3,001.30	\$2,401.04	\$600.26
	30 ft	\$3,164.50	\$2,531.60	\$632.90
	50 ft	\$3,482.50	\$2,786.00	\$696.50



SWIVELER[®] SENSOR KIT

Model 607A11 makes installation in tight spots quick and easy. The unique patented design features a floating lock nut that allows for easy cable orientation before securing the sensor into place.

PRODUCTS INCLUDED:

ICP[®] Accelerometer (Model 607A11)

Side exit ICP[®] accelerometer with ceramic element, 100 mV/g sensitivity, 0.5 to 10k Hz frequency range, patented swivel base, (± 3 dB) and integral cable. Operates in environments up to 250 °F.

Mounting Pad (Model 080A118)

1 in diameter stainless steel mounting pads with a ¼-28 tapped hole.

Switch Box (Model 691B41/691010)

Centralized data collection point in fiberglass enclosure with individual PGME07 cord grips.

Adhesive Kit (Model 075A05)

Epoxy adhesive kit is intended for mounting sensors.



SENSOR KIT	CABLE LENGTH OPTIONS (XXX)	LIST PRICE	BUNDLE PRICE	SAVINGS
6-CHANNEL				
600A46/XXX (6) Model 607A11 (6) Model 080A118 (1) Model 691B41/691010 (1) Model 075A05	10 ft	\$2,018.00	\$1,614.40	\$403.60
	20 ft	\$2,108.00	\$1,614.40	\$493.60
	30 ft	\$2,198.00	\$1,681.90	\$516.10
	50 ft	\$2,378.00	\$1,816.90	\$561.10
12-CHANNEL				
600A47/XXX (12) Model 607A11 (12) Model 080A118 (1) Model 691B41/691010 (1) Model 075A05	10 ft	\$3,416.00	\$2,597.80	\$818.20
	20 ft	\$3,572.00	\$2,714.80	\$857.20
	30 ft	\$3,728.00	\$2,831.80	\$896.20
	50 ft	\$4,040.00	\$3,065.80	\$974.20



HIGH TEMPERATURE SENSOR KIT

Model HT602D01 is a high temperature accelerometer with internal electronics that can withstand a higher temperature environment (325 °F) than any other IEPE accelerometer design on the market today.

PRODUCTS INCLUDED:

ICP® Accelerometer (Model HT602D01)

Side exit ICP® accelerometer with ceramic element, 100 mV/g sensitivity, 0.8 to 8k Hz frequency range ($\pm 3\text{dB}$) and 2-pin connector. Operates in environments up to 325 °F.

Cable (Model 053AE010BZ)

Polyurethane-jacketed cables in options of 10ft/20ft/30ft/50ft length with a 2-socket MIL-C-5015 connector on one end and a blunt cut termination on the other end.

Mounting Pad (Model 080A118)

1 in diameter stainless steel mounting pads with a $\frac{1}{4}$ -28 tapped hole.

Switch Box (Model 691B42/691020)

Centralized data collection point in fiberglass enclosure with individual PGME07 cord grips.

Adhesive Kit (Model 075A05)

Epoxy adhesive kit is intended for mounting sensors.



SENSOR KIT	CABLE LENGTH OPTIONS (XXX)	LIST PRICE	BUNDLE PRICE	SAVINGS
6-CHANNEL				
600A44/XXX (6) Model HT602D01 (6) Model 053AE010BZ (6) Model 080A118 (1) Model 691B42/691020 (1) Model 075A05	10 ft	\$2,779.10	\$2,133.28	\$645.82
	20 ft	\$2,871.20	\$2,206.96	\$664.24
	30 ft	\$2,942.30	\$2,263.84	\$678.46
	50 ft	\$3,116.00	\$2,402.80	\$713.20
12-CHANNEL				
600A45/XXX (12) Model HT602D01 (12) Model 053AE010BZ (12) Model 080A118 (1) Model 691B42/691020 (1) Model 075A05	10 ft	\$4,938.20	\$3,770.56	\$1,167.64
	20 ft	\$5,122.40	\$3,917.92	\$1,204.48
	30 ft	\$5,264.60	\$4,031.68	\$1,232.92
	50 ft	\$5,612.00	\$4,309.60	\$1,302.40



3425 Walden Avenue
Depew, NY 14043-2495 USA

| VISIT US AT WWW.PCB.COM/IMI-SENSORS |

IMI SENSORS designs and manufactures a full line of accelerometers, sensors, vibration switches, vibration transmitters, cables and accessories for predictive maintenance, continuous vibration monitoring, and machinery equipment protection. Products include rugged industrial ICP® accelerometers, 4-20 mA industrial vibration sensors and transmitters for 24/7 monitoring, electronic and mechanical vibration switches, the patented Bearing Fault Detector, high temperature accelerometers to +1300 °F (+704 °C), 2-wire Smart Vibration Switch, and the patented Reciprocating Machinery Protector. CE approved and intrinsically safe versions are available for most products.

THE INDUSTRY'S ONLY COMMITMENT TO TOTAL CUSTOMER SATISFACTION.

© 2017 PCB Piezotronics, Inc. In the interest of constant product improvement, specifications are subject to change without notice. PCB®, Swiveler®, Modally Tuned®, and IMI® with associated logo are registered trademarks of PCB Piezotronics, Inc. in the United States. ICP® is a registered trademark of PCB Piezotronics Europe GmbH in Germany and other countries. SensorLineSM is a servicemark of PCB Piezotronics, Inc. PCB Piezotronics, Inc. was acquired by MTS Systems Corporation in 2016 and merged with its sensors division – MTS Sensors. *Loctite is a registered trademark of Henkel Corporation, its subsidiaries, or its affiliated companies.

IMI-BUNDLE-0817

Artisan Technology Group is an independent supplier of quality pre-owned equipment

Gold-standard solutions

Extend the life of your critical industrial, commercial, and military systems with our superior service and support.

We buy equipment

Planning to upgrade your current equipment? Have surplus equipment taking up shelf space? We'll give it a new home.

Learn more!

Visit us at artisanng.com for more info on price quotes, drivers, technical specifications, manuals, and documentation.

Artisan Scientific Corporation dba Artisan Technology Group is not an affiliate, representative, or authorized distributor for any manufacturer listed herein.

We're here to make your life easier. How can we help you today?

(217) 352-9330 | sales@artisanng.com | artisanng.com

