

Ashcroft 1009S  
**Stainless Steel Gauge**



**\$45.00**

**In Stock**

**Qty Available: 1**

**Used and in Excellent Condition**

**Open Web Page**

<https://www.artisanTG.com/71946-1>

All trademarks, brandnames, and brands appearing herein are the property of their respective owners.



Your **definitive** source  
for quality pre-owned  
equipment.

**Artisan Technology Group**

(217) 352-9330 | [sales@artisanTG.com](mailto:sales@artisanTG.com) | [artisanTG.com](http://artisanTG.com)

- Critical and expedited services
- In stock / Ready-to-ship

- We buy your excess, underutilized, and idle equipment
- Full-service, independent repair center

Artisan Scientific Corporation dba Artisan Technology Group is not an affiliate, representative, or authorized distributor for any manufacturer listed herein.

## Data Sheet

# 1009 4½" & 6" Stainless Steel Gauge

### FEATURES

- **PLUS!™** Performance dampens vibration, shock and pulsation effects
- Wide selection of pressure connections and pressures ranges
- Dry and liquid-filled versions
- Micrometer adjustable pointer

### TYPICAL USES

- Deionized water
- Refrigeration
- Hydraulics and pneumatics
- Specialized OEM equipment



**1009**

4½", 6" dial size



### SPECIFICATIONS

Accuracy:	±1% of span (ASME B40.100 Grade 1A) 0.5% Accuracy (OPT)
Size:	4½", 6"
Ranges:	A - Bronze: Vacuum, compound to 1,000 psi S - SS: Vacuum, compound to 20,000 psi P - Monel®: Vacuum, compound to 30,000 psi
Process Connection Location:	Lower or lower back
Process Connection Size:	¼ NPT, ½ NPT, ⅝-18 UNF-2B for ¼" high pressure tubing
Movement:	400 Stainless steel
Window Material:	Glass (STD.), acrylic, shatter proof glass (OPT.)
Dial:	Aluminum, white background, black figures and graduations
Pointer:	Micrometer, adjustable
Case Style:	Open front
Weather Protection:	Case not sealed. Recommended for weather protected environment only Liquid fillable IP65
Dampening:	<b>PLUS!™</b> Performance and liquid fill (glycerin, silicone and Halocarbon®)
Mounting:	Stem, surface (STD.) U-clamp, front flange and back flange (OPT.)
Approvals:	CRN, RoHS, CE/UKCA

### WETTED COMPONENTS

Model	Bourdon Tube	Process Connection Material
1009A	Brass	Bronze
1009S	316L SS	316L Stainless steel
1009P	Monel®	Monel®

### KEY BENEFITS

- Provides durability, reliability, and performance
- Well-suited for aggressive process media applications

### MIN/MAX TEMPERATURE LIMITS

Version	Ambient	Process	Storage
Dry	-40 °F to 200 °F (-40 °C to 93 °C)	-20 °F to 250 °F (-40 °C to 121 °C)	-40 °F to 250 °F (-40 °C to 121 °C)
<b>PLUS!™</b>	-40 °F to 150 °F (-40 °C to 66 °C)	-40 °F to 200 °F (-40 °C to 93 °C)	-40 °F to 150 °F (-40 °C to 66 °C)
Glycerin Fill	20 °F to 150 °F (-7 °C to 66 °C)	20 °F to 200 °F (-7 °C to 66 °C)	0 °F to 150 °F (-18 °C to 66 °C)
Silicone Fill	-40 °F to 150 °F (-40 °C to 66 °C)	-40 °F to 200 °F (-40 °C to 93 °C)	-40 °F to 150 °F (-40 °C to 66 °C)
Halocarbon® Fill	-40 °F to 150 °F (-40 °C to 66 °C)	-40 °F to 200 °F (-40 °C to 93 °C)	-40 °F to 150 °F (-40 °C to 66 °C)

### NON-WETTED COMPONENTS

Model	Case	Ring
1009	304 Stainless steel, Monel®	304 Stainless steel, bayonet

## Data Sheet

### 1009 4½" & 6" Stainless Steel Gauge

ORDERING CODE:	Example:	45	1009	A	L	02	L	XC4	100#
<b>Dial Size</b>									
45 - 4½"		45							
60 - 6"									
<b>Model Code</b>									
1009 - 304 Stainless steel case, open front			1009						
<b>System</b>									
A - Phosphor bronze tube/brass process connection, (1,000 psi Max.)				A					
S - 316L Stainless steel tube/316L SS process connection, (20,000 psi Max.)									
P - K-Monel® 500 tube, Monel® 400 process connection, (30,000 psi Max.)									
<b>Case Fill</b>									
(blank) - Dry gauge									
L - Liquid filled case (glycerin standard)					L				
<b>Process Connection Size</b>									
02 - ¼ NPT Male, Max. pressure 20,000 psi						02			
04 - ½ NPT Male, Max. pressure 20,000 psi									
09 - ¾"-18 UNF-2B Aminco® high pressure fitting, (standard for pressures over 20,000 psi)									
<b>Process Connection Location</b>									
L - Lower							L		
B - Back									
<b>Options</b> (If choosing an option(s) must include an "X")								X	
C4 - <a href="#">Traceable calibration certificate</a>								C4	
LL - <b>PLUS!</b> ™ Performance									
GV - Silicone case fill									
GX - Halocarbon® case fill									
LJ - Liquid fillable IP65									
TS - Throttle screw (standard with liquid filled, XLJ or XLL <b>PLUS!</b> ™ Performance)									
6B - Oxygen service									
PD - Plastic window (standard with liquid filled or XLJ)									
SG - Safety glass									
EP - Maximum pointer, adjustable									
EO - Adjustable red set hand (N/A with liquid fill)									
SH - Red set hand, stationary									
NH - Stainless steel tag wired to case									
FF - Front flange									
BF - Back flange									
UC - U-clamp									
SM - All Stainless steel movement									
AJ - 0.5% Accuracy									
<b>Range</b> (See range table on page 3 for all standard ranges)									
100# - 100 psi									100#

When selecting a diaphragm seal or isolation ring, refer to the [Min/Max Guide](#) for compatibility with this gauge or scan the QR code to the right.



# 1009 4½" & 6" Stainless Steel Gauge

SINGLE SCALE					NOTES
Vacuum	psi	bar	kPa	Mpa	kg/cm2
	30IMV	N1BR	N100KP	N0.1MP	N1KG
	-	N1/0.6BR	N100/60KP	N0.1/0.6MP	N1/0.6KG
	30IMV&15#	-	-	-	-
	-	N1/1.5BR	N100/150KP	N0.1/15MP	N1/1.5KG
	30IMV&30#	-	-	-	-
	-	N1/3BR	N100/300KP	N0.1/3MP	N1/3KG
	30IMV&60#	-	-	-	-
	-	N1/5BR	N100/&500KP	N0.1/5MP	N1/5KG
	-	-	-	-	-
	30IMV&100#	-	-	-	-
	-	N1/9BR	N100/900KP	N0.1/9MP	N1/9KG
	15#	1BR	100KP	0.1MP	1KG
	-	1.6BR	160KP	0.16MP	1.6KG
	30#	-	-	-	-
	-	2.5BR	250KP	0.25MP	2.5KG
	60#	4BR	400KP	0.4MP	4KG
	-	6BR	600KP	0.6MP	6KG
	100#	-	-	-	-
	-	10BR	1000KP	1MP	10KG
	160#	-	-	-	-
	200#	-	-	-	-
	-	16BR	1600KP	1.6MP	16KG
	300#	-	-	-	-
	-	25BR	2500KP	2.5MP	25KG
	400#	-	-	-	-
	600#	40BR	4000KP	4MP	40KG
	800#	-	-	-	-
	-	60BR	6000KP	6MP	60KG
	1000#	-	-	-	-
	1500#	100BR	10,000KP	10MP	100KG
	2000#	-	-	-	-
	-	160BR	16,000KP	16MP	160KG
	3000#	-	-	-	-
	-	250BR	25,000KP	25MP	250KG
	4000#	-	-	-	-
	5000#	-	-	-	-
	6000#	400BR	40,000KP	40MP	400KG
	-	600BR	60,000KP	60MP	600KG
	8000#	-	-	-	-
	10,000#	-	-	-	-
	15,000#	1000BR	100,000KP	100MP	1,000KG
	20,000#	-	-	-	-
	30,000#	-	-	-	-

Stainless steel systems only

Monel® systems only

# Data Sheet

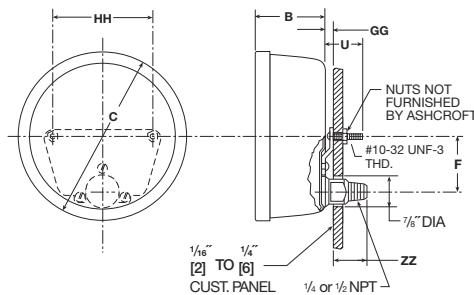
## 1009 4½" & 6" Stainless Steel Gauge

### DIMENSIONS in [ ] are millimeters

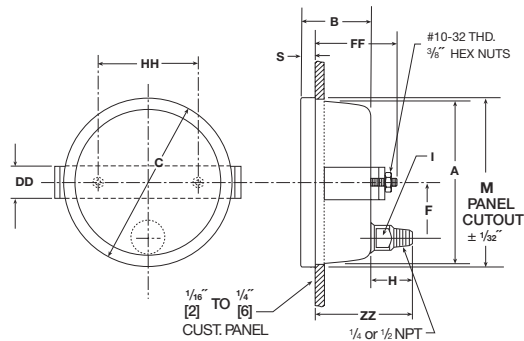
For reference only, consult Ashcroft for specific dimensional drawings

Gauge Size	A	B	C	C-1	D	DD	E	F	FF	G	GG	H	HH	I	J	L	M	S	U	ZZ	Weight Dry	Weight LF
<b>4½"</b> <b>[114.3]</b>	4.72 [120]	2.06 [52]	5.09 [129]	6.25 [159]	.94 [24]	1 [25]	5.69 [144]	1.63 [41]	2.31 [59]	3.94 [100]	.19 [5]	1.63 [41]	3 [76]	.63 [16]	.16 [4]	.22 [6]	4.81 [122]	.47 [12]	1.44 [37]	3.28 [83]	1.75# 0.79 kg	2.40# 1.1 kg
<b>6"</b> <b>[152.4]</b>	6.31 [160]	2 [51]	6.66 [169]	7.22 [194]	.84 [22]	1 [25]	7.03 [179]	1.63 [41]	2.63 [67]	4.81 [122]	.19 [5]	1.63 [41]	4.5 [114]	.63 [16]	.06 [2]	.25 [7]	6.44 [163]	.41 [10]	1.44 [37]	.63 [16]	2.25# 1 kg	4.12# 1.85 kg

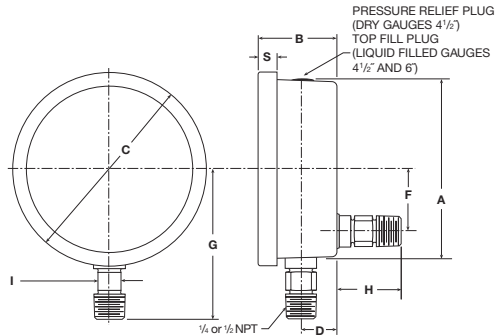
### 4½" & 6" 1009 BACK CONNECT, WALL MOUNTING BRACKET (XBF)



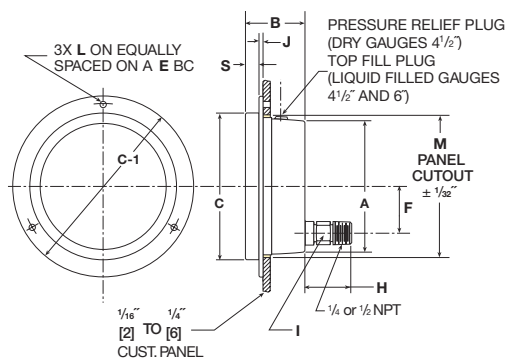
### 4½" & 6" 1009 BACK CONNECT U-CLAMP (XUC)



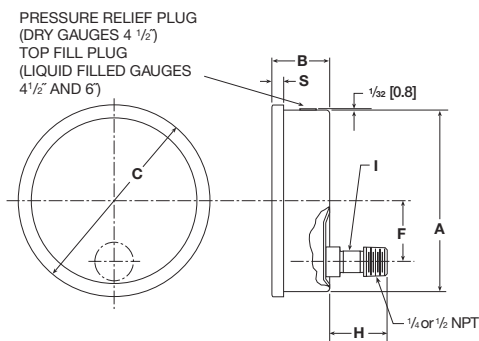
### 4½" & 6" 1009 LOWER OR BACK CONNECT



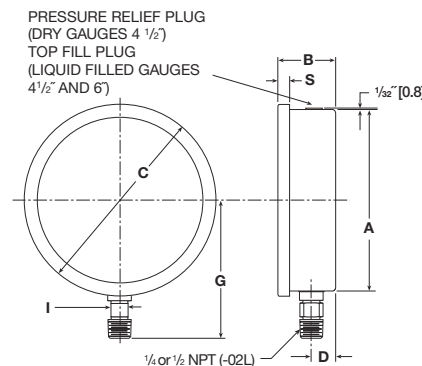
### 4½" & 6" 1009 BACK CONNECT FRONT FLANGE (XFF)



### 6" 1009 BACK CONNECT



### 6" 1009 LOWER CONNECT



# Artisan Technology Group is an independent supplier of quality pre-owned equipment

## Gold-standard solutions

Extend the life of your critical industrial, commercial, and military systems with our superior service and support.

## We buy equipment

Planning to upgrade your current equipment? Have surplus equipment taking up shelf space? We'll give it a new home.

## Learn more!

Visit us at [artisanng.com](https://www.artisanng.com) for more info on price quotes, drivers, technical specifications, manuals, and documentation.

Artisan Scientific Corporation dba Artisan Technology Group is not an affiliate, representative, or authorized distributor for any manufacturer listed herein.

**We're here to make your life easier. How can we help you today?**

(217) 352-9330 | [sales@artisanng.com](mailto:sales@artisanng.com) | [artisanng.com](https://www.artisanng.com)

