

Astro-Med Dash II  
**2-Channel Portable Field Recorder**



**In Stock**

**Used and in Excellent Condition**

**Open Web Page**

<https://www.artisantg.com/81768-1>

All trademarks, brandnames, and brands appearing herein are the property of their respective owners.



Your **definitive** source  
for quality pre-owned  
equipment.

**Artisan Technology Group**

(217) 352-9330 | [sales@artisantg.com](mailto:sales@artisantg.com) | [artisantg.com](http://artisantg.com)

- Critical and expedited services
- In stock / Ready-to-ship

- We buy your excess, underutilized, and idle equipment
- Full-service, independent repair center

Artisan Scientific Corporation dba Artisan Technology Group is not an affiliate, representative, or authorized distributor for any manufacturer listed herein.

# 2-CHANNEL NEW TECHNOLOGY FIELD RECORDER

Solid-state, rugged design for Industrial, Utility, Geological and other applications



- DC to 500 Hz Frequency Response
- Separate or Overlapping Waveforms
- No Styluses, Inks or Toners
- Text Printing on the Chart
- AC, 12 VDC or Built-In Battery Operation
- Proven Reliability — Full 2-Year Warranty

## Dash II model MT New Technology 2-Channel Field Recorder

### The World's Only Field Recorder

The Dash II model MT is the only recorder in the world especially designed for field service. Built for reliable operation under the most demanding physical and environmental conditions, the Dash II is equally at home logging data from oil wells; monitoring operations at steel and paper mills and industrial processing plants; accurately recording data while strapped onto bouncing army tanks; monitoring nuclear power stations; or at work in electric power utilities or troubleshooting telephone lines. Other recorders, with their delicate moving parts or ink writing systems, just can't survive in these applications.

The Dash II operates from various power sources: 110/220 VAC, external 11-18 VDC or through built-in rechargeable batteries lasting up to three hours.\* Recharge while recording. Just plug the unit into AC line power, and the batteries recharge as the recorder runs.

Built into a tank-tough aluminum case, and weighing only 32 lbs., the compact Dash II is easy to carry

\*Battery life between re-charges is affected by chart paper speed and signal amplitude and frequency.



wherever you go. It fits neatly beneath most airline seats. A convenient pouch on the side of the case carries an operating manual, extra chart paper, and your signal hook-up cables.

### Accurate, Crisp, Sharp Charts

The Dash II produces remarkably vivid, sharp, uniform traces and prints clear text. And skipping, a particularly troublesome recorder problem, has been eliminated because there are no styluses or pens.

Accuracy is assured by the Dash II's 10-bit digital technology, with a high sampling rate that permits signals as short as 1 millisecond to be faithfully recorded. And accuracy is preserved because the grid and data are printed simultaneously, completely eliminating chart paper drift and skew.

### Full Two-Year Warranty

The remarkable reliability of the New Technology has made it possible to offer an unprecedented full 2-year warranty for both parts and labor for the Dash II. Without pens or styluses to break, no fluids or chemicals, no exotic plumbing, and with no moving parts, the Dash II is virtually trouble-free.

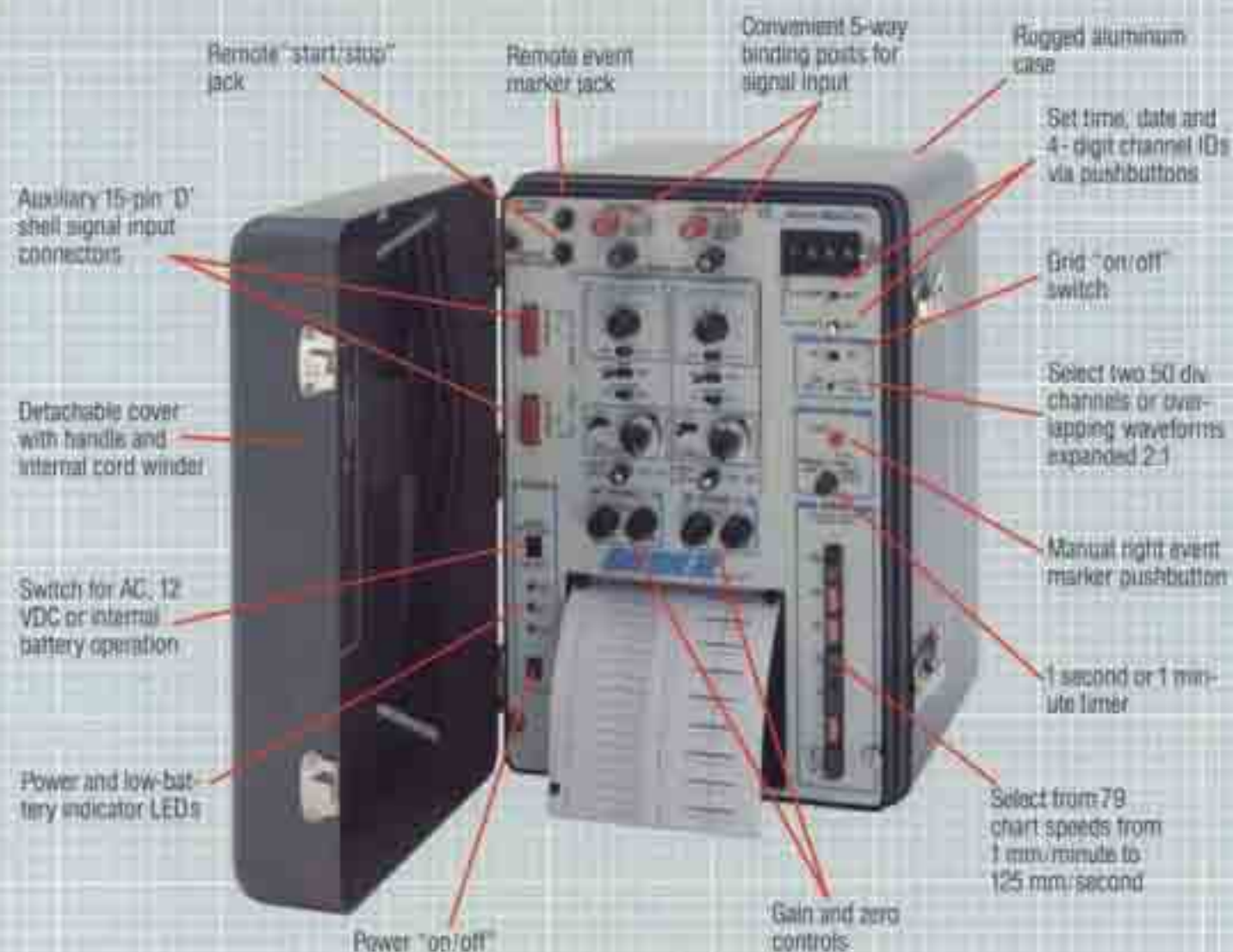
### Astro-Med's New Technology and the Dash II model MT

Years ago, the evolution of recorders came to a natural end because of their dependence on moving mechanical parts such as

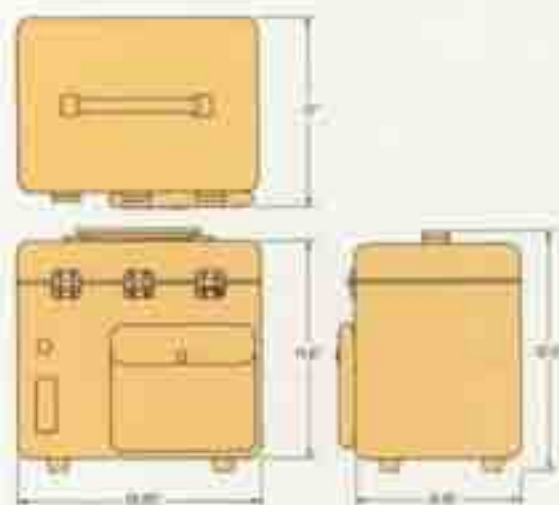
pen motors. And so recorders have continued to be inaccurate and troublesome with breakable pens and messy inks. Enter Astro-Med's New Technology: It eliminates old fashioned mechanical and liquid components which inhibit and delay the recording process. In the Dash II,

only the chart paper and the electrons move. Incoming data is processed digitally with 10-bit accuracy, and waveforms and other data are printed with a high density therm printhead. And the tracings are unbelievably clear, accurate and free of any distortion.

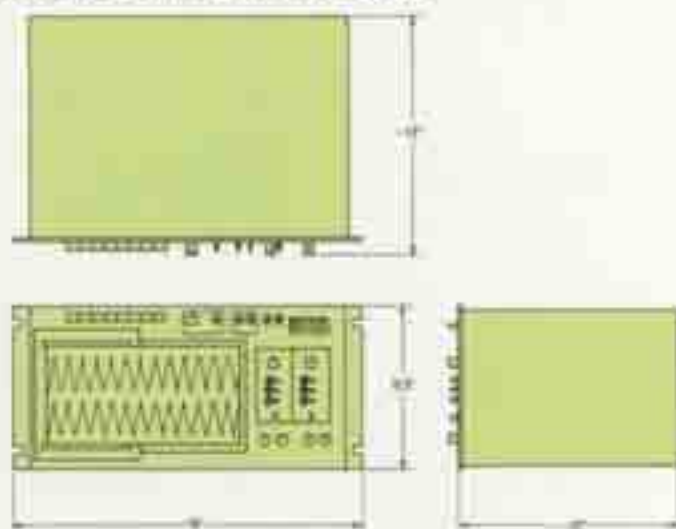




## Mechanical Configurations and Dimensional Data



Dash II portable model



Dash IIR rack-mounting model

# Dash II model MT New Technology 2-Channel Field Recorder

## The Best Chart Record... Ever

The Dash II MT has important features never before available in a field recorder. For example, while recording two separate 50 division channels of data, you can expand both channels to 2:1 and overlap them, at the flick of a switch. This feature permits easy comparison of two different signals and greatly increases resolution. And you can do this at frequencies up to 500 Hz full scale! You get clear, crisp traces. No overshoot, no skips, no fading. Writing quality far surpasses that of any existing recorder. In addition, a system log channel automatically

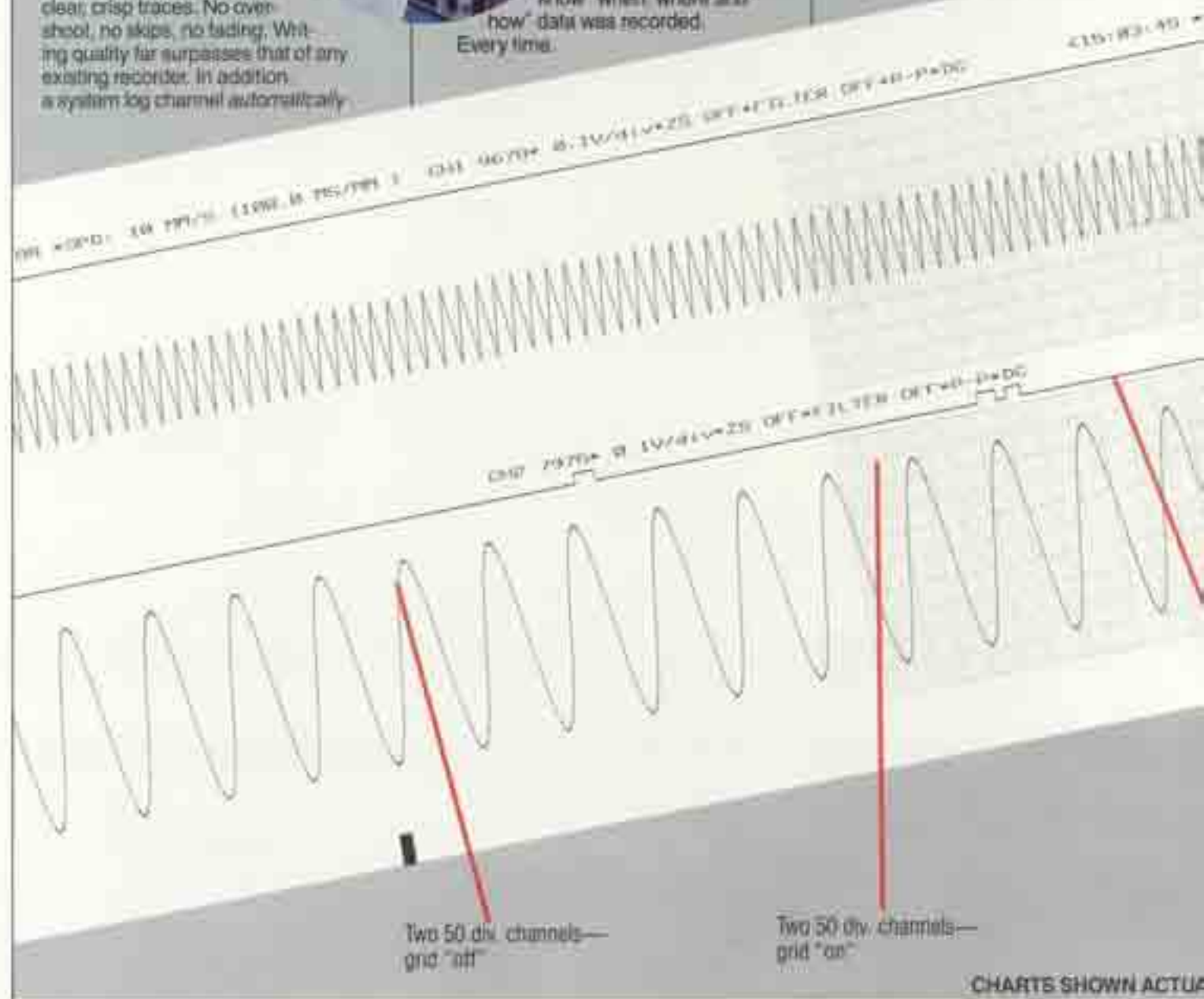


prints time, date, chart speed, and time scale information in the chart margin. The Dash II will also mark each channel with a four-digit ID number which you enter through front panel pushbuttons.

And there's more. The plug-in signal conditioners contain a "talking" feature that permits the recorder to print out switch settings and other data in the margins of the chart. Thus, there is never a question about data when a chart is analyzed: you know "when, where and how" data was recorded. Every time.

## Chart Skew Eliminated

Some people call it chart skew, drift or wander. Whatever you call it, it is one of the most common and serious errors in old technology recorders. That's because they use pre-printed charts, and charts don't track perfectly. Because they're made of paper they wander slightly from side to side. But the New Technology Dash II prints its own chart grid as it records the data, so even if the chart wanders, the Dash II is entirely free from chart drift error.



CHARTS SHOWN ACTUAL





# Dash II model MT New Technology 2-Channel Field Recorder

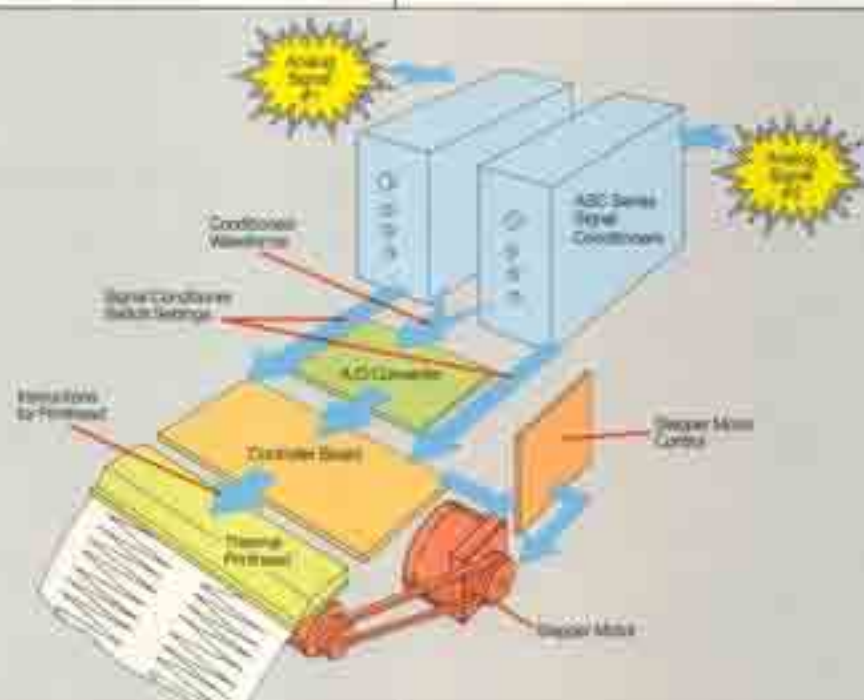
## How the New Technology Works

ASC-900 series amplifiers condition your incoming analog signals, and then send them to the A/D board. Here, the data is sampled at 5 KHz and converted into a continuous stream of digital values. The controller board converts the signals into either separate 50 division or 2:1 expanded channels, selectable via a front panel switch.

Each of the 800 writing elements in the printhead receives up to 1000 print commands per second. This creates an instantaneous, permanent record on thermally sensitive paper, which is moved across the printhead by a precise crystal-referenced stepper motor. The extremely

smooth, sharp, and clear traces are visible immediately after printing and need no developing or processing.

Grids and event markers are generated simultaneously with waveforms.



## High Frequency Response

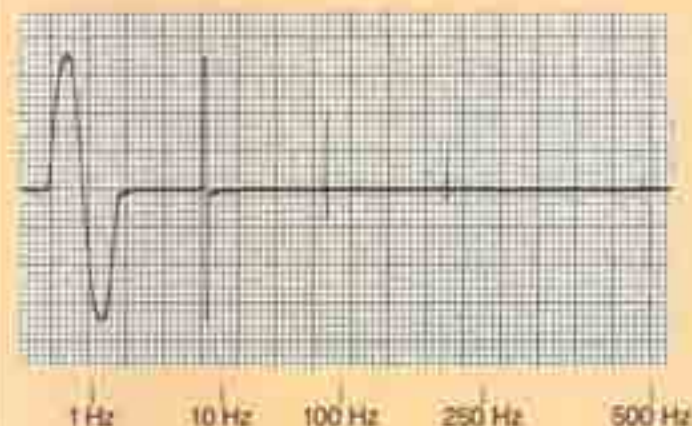
The high sampling rate allows transients as short as 1 ms to be

faithfully recorded. Because of the high *printing* rates, complete waveform analysis is limited only by paper speed, not by the filtering and attenuating effect of a

moving pen or stylus.

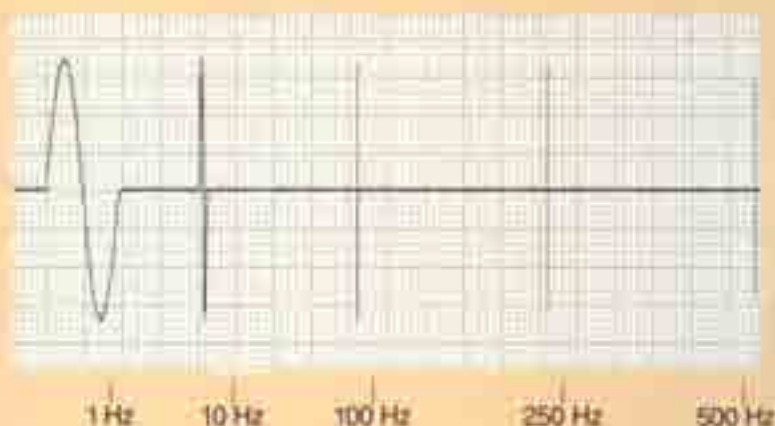
The actual chart sample below illustrates how accurately single cycles of varying frequencies are faithfully recorded by the Dash II.

Conventional Stylus Recorder



Unretouched chart demonstrates characteristic non-linear frequency response of conventional stylus recorder. Note dramatic attenuation as frequency increases.

New Technology Dash II



Ten-fold improvement in linearity and frequency response of Dash II reproduces 500 Hz signal within 3 dB.

## Plug-In Signal Conditioners

A complete family of Astro-Med ASC plug-in signal conditioners adapts the Dash II instantly to specific applications such as monitoring power lines, industrial processes, aircraft and automotive functions, and many more.

Each signal conditioner is complete with all controls required for its



particular function. Signal conditioner models include General Purpose ASC-902, High Voltage ASC-903, DC Bridge ASC-906, High Gain ASC-908, Medium-High Gain ASC-909, Thermocouples ASC-910J and ASC-910K, Frequency-to-Voltage ASC-912, and Logarithmic ASC-913.

Complete specifications for all models are provided in a separate brochure.

## Specifications, Performance and Engineering Data

<b>Recording Method</b>	Direct writing with thermal-sensy printhead (no moving parts)	<b>Gain Control</b>	CAL and variable (0-100%) via front panel pot/switch
<b>Recording Medium</b>	Low cost permanent thermal paper, black imaging	<b>Chart Speeds</b>	TS, from 1 mm/min to 125 mm/sec
<b>Chart Width</b>	3" (76.2 mm)	<b>Chart Motor Type</b>	Stepper, crystal-referenced
<b>Chart Length</b>	150" (45.5 meters)	<b>Chart Speed Accuracy</b>	±0.2%
<b>Number of Channels</b>	Two, plus two event markers	<b>Grid Types</b>	Two 50 div — 10 major, 50 minor subdivisions One 50 div — 10 major, 50 minor subdivisions
<b>Frequency Response</b>	DC to 500 Hz full scale, -3dB	<b>Grid Control</b>	On/off via front panel switch
<b>Resolution</b>	200 dots per inch across printhead	<b>Dimensions</b>	Portable Model: 12" (30.5 cm) D x 18" (45.7 cm) W x 13 1/2" (33.7 cm) H Rock Mount Model: 12" (30.5 cm) D x 19" (48.3 cm) W x 8 1/2" (22.2 cm) H
<b>Linearity</b>	Within 0.2% of full scale	<b>Weight</b>	22 lbs (10.0 kg) with batteries
<b>A/D Type</b>	10-bit	<b>Temperature Range</b>	5-45°C (30-113°F), 5-95% RH, operating
<b>Chart Drift</b>	Not applicable since grid is printed simultaneously with waveform	<b>Power Requirements</b>	AC: 110/230 VAC selectable, 48-440 Hz DC: 11-18 VDC Internal, built-in batteries (portable model only)
<b>Signal Input</b>	Varies with ASC-900 Signal Conditioner model used, see examples below: ASC-902 General Purpose — 1 mV/div to 500 V ASC-903 High Voltage — 0.5 mV/div to 1000 V ASC-908 High Gain — 1 $\mu$ V/div to 5 V	<b>Batteries</b>	Rechargeable gel type, factory installed, 2-3 hours of operation per charge
<b>Input Type</b>	Differential or single-ended (see ASC-900 brochure)	<b>Charger &amp; Indicator</b>	Built-in charger. Recharges automatically when plugged into AC line power. Front panel LEDs indicate low battery and power
<b>Input Connector</b>	5-way binding posts, plus 15 pin "D" shield	<b>Manufactured</b>	U.S.A.
<b>Zero Control</b>	Full scale via front panel pot	<b>Warranty</b>	3 years



# Artisan Technology Group is an independent supplier of quality pre-owned equipment

## Gold-standard solutions

Extend the life of your critical industrial, commercial, and military systems with our superior service and support.

## We buy equipment

Planning to upgrade your current equipment? Have surplus equipment taking up shelf space? We'll give it a new home.

## Learn more!

Visit us at [artisanTG.com](https://www.artisanTG.com) for more info on price quotes, drivers, technical specifications, manuals, and documentation.

Artisan Scientific Corporation dba Artisan Technology Group is not an affiliate, representative, or authorized distributor for any manufacturer listed herein.

**We're here to make your life easier. How can we help you today?**

(217) 352-9330 | [sales@artisanTG.com](mailto:sales@artisanTG.com) | [artisanTG.com](https://www.artisanTG.com)

