

Hurst KD

Brushed DC Geared Motor



Limited Availability
New From Surplus Stock

Open Web Page

<https://www.artisanng.com/59619-1>

All trademarks, brandnames, and brands appearing herein are the property of their respective owners.



Your **definitive** source
for quality pre-owned
equipment.

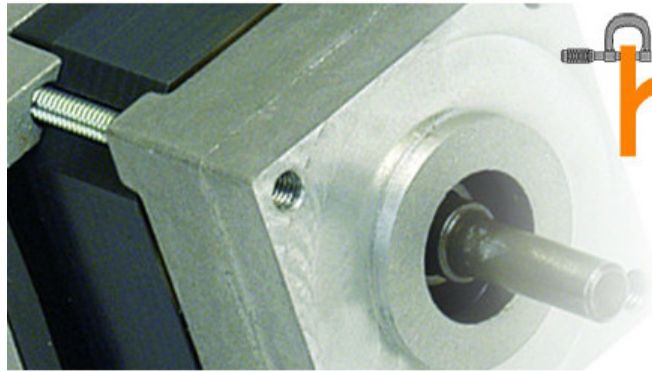
Artisan Technology Group

(217) 352-9330 | sales@artisanng.com | artisanng.com

- Critical and expedited services
- In stock / Ready-to-ship

- We buy your excess, underutilized, and idle equipment
- Full-service, independent repair center

Artisan Scientific Corporation dba Artisan Technology Group is not an affiliate, representative, or authorized distributor for any manufacturer listed herein.



hurst Motors

... Where Ingenuity Meets Practicality

hurst Products

Variable Speed Motors

- ☒ Brushless DC
- ☒ Hybrid Stepper
- ☒ Brushed DC
 - NEMA 2-11 (KD) Geared
- ☒ Linear Actuators
- ☒ Permanent Magnet DC Stepper

Fixed Speed Motors

- ☒ AC Synchronous
- ☒ AC Induction
- ☒ Linear Actuators

Hospital Bed Replacement Motors

Controllers

GreenDrive (12-48 Vdc)

Download Material

View Documents

Discontinued Products

View List

Brushed DC Motor Family

Series KD Geared

[Printer Friendly Version](#)


[Click to Enlarge](#)
[Purchase Now!](#)
 (U.S. payments only)

Brushed DC KD Geared Specifications:

Mounting:	NEMA 2-11 Standard
Torque Rating:	5.8 to 237- oz-in [50 to 1673 mN-m]
Nominal Voltage:	90 Vdc
Operating Ambient Temp:	< 50°C
Gearing:	Heli-Spur Design
Leads:	2 leads 22AWG (approx. 16 inches [406.4 mm])
Note: Typical data subject to change without notification	

Additional Information:

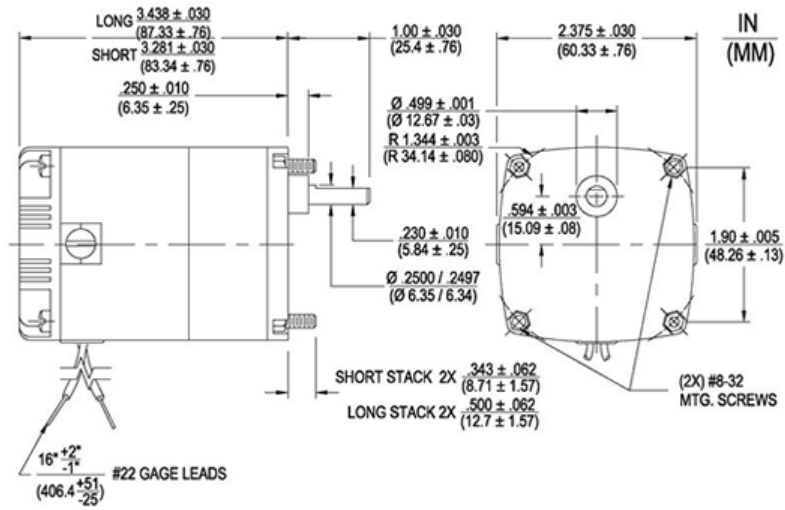
The HURST® KD high efficiency DC motor is a brush type, permanent-magnet motor. With the constant flux field, the speed-torque and current-torque curves are linear, and reliability and efficiency are improved. Two leads from the motor allow simple reversing.

The KD is furnished with a heavy duty integral gear unit with a wide range of reductions. Gearing is of "Heli-Spur" design with helical gears in the primary stage for quiet operation and hardened spur gears in the secondary stages.

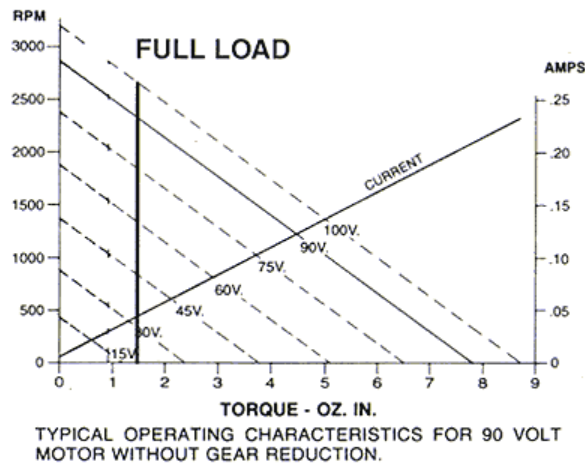
Notes:

- 90Vdc is standard. [Contact factory](#) for other voltages. Non-Standard motors are available with 6, 12, and 24Vdc windings (minimum buy for non-standard KD models are 25 pieces).
- All performance data based upon operation with uniform DC current. Rectified and non-filtered AC change performance values.

KD Geared Drawings:



KD Geared Diagrams:



KD Geared Model Table:

Add to Cart	Model	Part Number	Stock	Grainger SKU	Rated Torque (oz-in)	Rated Torque (mN-m)	Rated Torque (In-Lbs)	Reduction	Typical Output Speed (RPM)	Track Speed Range Full Load (RPM)	Track Speed Range No Load (RPM)	Nominal Voltage (Vdc)	Typical Full Load Current Low (A)	Typical Full Load Current High (A)	Input Power (watts)	Case Length (in)	Case Length (mm)	Weight (oz)	Weight (grams)
	KD	3402-001 ¹	Stock	4FM10	237	1673.5	14.8	1800	1.2	.95-1.2	1.1-1.5	90	.018	.028	2.25	3.44	87.4	3	85.1
	KD	3402-002 ¹	Stock	4FM11	206	1454.6	12.9	900	2.5	2.3-2.5	2.6-3.2	90	.022	.03	2.25	3.44	87.4	3	85.1
	KD	3402-003 ¹	Stock	4FM12	190	1341.6	11.9	600	3.7	3.1-3.7	3.9-4.5	90	.025	.03	2.25	3.44	87.4	3	85.1
	KD	3402-004 ¹	Stock	4FM13	166	1172.1	10.4	300	7.4	6.3-7.4	7.7-9	90	.032	.04	2.25	3.44	87.4	3	85.1
	KD	3402-005 ¹	Stock	4FM14	150	1059.2	9.38	180	12.2	11.5-12.2	14-15	90	.039	.046	2.25	3.44	87.4	3	85.1
	KD	3402-006	Stock	4FM15	69	487.2	4.31	60	35	30-35	40-45	90	.048	.06	2.25	3.44	87.4	3	85.1
	KD	3402-007	Stock	4FM16	35	247.1	2.19	30	75	65-75	80-90	90	.048	.06	2.25	3.28	83.3	3	85.1
	KD	3402-008	Stock	4FM17	22.5	158.9	1.41	18	135	120-135	145-170	90	.048	.06	2.25	3.28	83.3	3	85.1
	KD	3402-009	Stock	4FM18	10	70.6	.625	9	245	220-245	270-305	90	.048	.058	2.25	3.28	83.3	3	85.1
	KD	3402-010	Stock	4FM19	7	49.4	.438	6	385	345-385	430-475	90	.05	.058	2.25	3.28	83.3	3	85.1

Notes:

¹ Maximum Gear Train Loading.

[Back to Top](#)

Artisan Technology Group is an independent supplier of quality pre-owned equipment

Gold-standard solutions

Extend the life of your critical industrial, commercial, and military systems with our superior service and support.

We buy equipment

Planning to upgrade your current equipment? Have surplus equipment taking up shelf space? We'll give it a new home.

Learn more!

Visit us at [artisanng.com](https://www.artisanng.com) for more info on price quotes, drivers, technical specifications, manuals, and documentation.

Artisan Scientific Corporation dba Artisan Technology Group is not an affiliate, representative, or authorized distributor for any manufacturer listed herein.

We're here to make your life easier. How can we help you today?

(217) 352-9330 | sales@artisanng.com | [artisanng.com](https://www.artisanng.com)

