

HP E6621A

## PXT LTE Wireless Communications Test Set



**In Stock**

**Used and in Excellent Condition**

**Open Web Page**

<https://www.artisanng.com/97687-1>

All trademarks, brandnames, and brands appearing herein are the property of their respective owners.



Your **definitive** source  
for quality pre-owned  
equipment.

**Artisan Technology Group**

(217) 352-9330 | [sales@artisanng.com](mailto:sales@artisanng.com) | [artisanng.com](http://artisanng.com)

- Critical and expedited services
- In stock / Ready-to-ship

- We buy your excess, underutilized, and idle equipment
- Full-service, independent repair center

Artisan Scientific Corporation dba Artisan Technology Group is not an affiliate, representative, or authorized distributor for any manufacturer listed herein.



# PXT E6621A LTE Wireless Communications Test Set

Accelerate time-to-market for LTE UE designs

## Technical Overview



Figure 1. Agilent PXT E6621A LTE wireless communications test set

The Agilent Technologies PXT E6621A LTE wireless communications test set represents a significant breakthrough in LTE UE testing. It incorporates flexible base station/network emulation and RF parametric tests into one integrated unit and extends Agilent's unmatched portfolio of LTE test solutions for development and verification.

The PXT includes a suite of LTE RF measurements that may be used for characterization, calibration, and verification purposes.

With realistic base station/network emulation, the PXT LTE test set offers a controlled environment which can be used to provide network signaling to verify UE functional performance such as throughput. The PXT provides maximum flexibility to configure a range of connection and network parameters. This enables test, stress, and debug of the protocol and data handling capabilities of designs including circuit switched fall back (CSFB), simultaneous voice and LTE (SVLTE), and single radio voice call continuity (SRVCC).

Optional software applications are available to enable more detailed protocol and application testing and analysis.

With the PXT, Agilent helps you get designs to market faster and more efficiently, and continues to provide you with comprehensive tools for all stages of the product lifecycle.



## Signaling Test Items

- Support for multiple 3GPP LTE dated specifications, optional FDD and TDD
- Settable frequency, power, modulation schemes, bandwidth, and grant/allocation
- Attach, connection, reconfiguration, authentication, NAS and RRC security
- High data throughput using internal test mode or end-to-end IP data—up to 102 Mbps DL, 51 Mbps UL, and Cat 3FDD
- Transmission modes 1-4 and 6, SISO, Tx diversity, open-loop MIMO and closed-loop MIMO operation
- UE reporting for ACK/NACK's lost packets, UCI and measurement reporting, as well as CQI, PMI, and RI for FDD
- LTE-to-LTE handovers
- 2G GSM/(E)GPRS, 3G W-CDMA/HSPA, cdma2000®/1xEV-DO/eHRPD, and TD-SCDMA interRAT handovers when connected to the Agilent 8960 Series 10 wireless communications test set
- LTE real-time protocol logging and analysis
- Highly configurable detailed signaling control with LTE message editor application

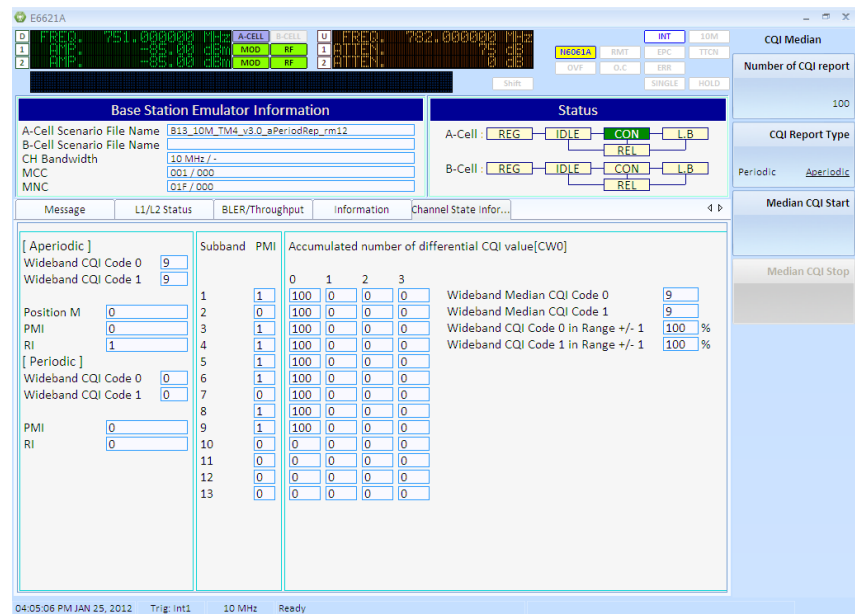


Figure 2. N6050A LTE mobile test software channel state information screen

## UE Receiver (DL) Test

- Measurements based on 3GPP 36.521 requirements
- Measurements in UE test mode, end-to-end data test or with UE set to receive only
- High data throughput using internal test mode or end-to-end IP data—up to 102 Mbps, DL, 51 Mbps UL, and Cat 3 FDD
- Settable frequency, power, modulation schemes, bandwidth, and grant/allocation
- Display of UE reports (CQI, PMI, RI, UCI and power headroom, buffer reporting)
- 2x2 downlink MIMO channel with wide-band and sub-band CQI per code
- Built-in traffic generation for UE downlink test
- ACK/NACK/lost packet reports
- DL error rate percentage (text and graphical)
- DL instantaneous throughput (text and graphical)
- OCNG and AWGN impairments

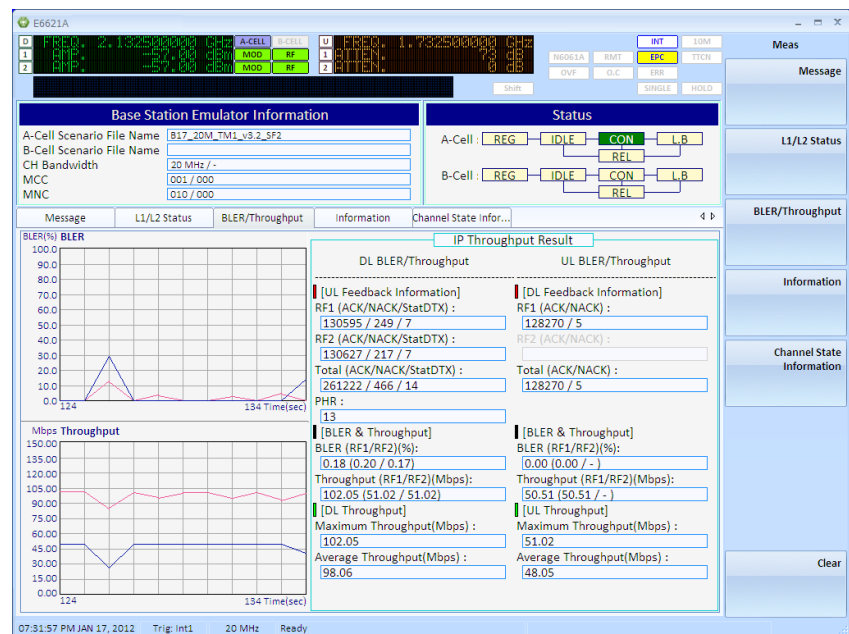


Figure 3. N6052C category 3 MIMO throughput – 102 Mbps DL/51 Mbps UL

## UE Transmitter (UL) Test

- Measurements based on 3GPP 36.521 requirements
- Measurements in test mode, end-to-end data test or with UE set to transmit only
- Settable frequency, power, modulation schemes, bandwidth, and grant/allocation
- Channel power, power spectrum, power versus time, and flatness
- Occupied bandwidth
- Spectrum emission mask
- Adjacent channel power
- Constellation, EVM
- Frequency and timing error
- Received I/Q data
- UL throughput
- Supports 89600 VSA software for additional in-depth RF analysis



Figure 4. N6061A IQ data measurement



Figure 5. 89600 VSA software support

## LTE Message Editor

LTE message editor is a highly flexible tool for configuring of Layer 3 messages (RRC and NAS). It provides detailed parameter control offering far more flexibility than a normal one-box tester.

- Create and modify scenario files for download into the PXT
- Complete control over all settings including system, network, and base station information
- Send erroneous messages to test UE responses
- Easy to use, with intuitive tree menu structure for message management
- Share scenarios during collaborative test development and for faster troubleshooting

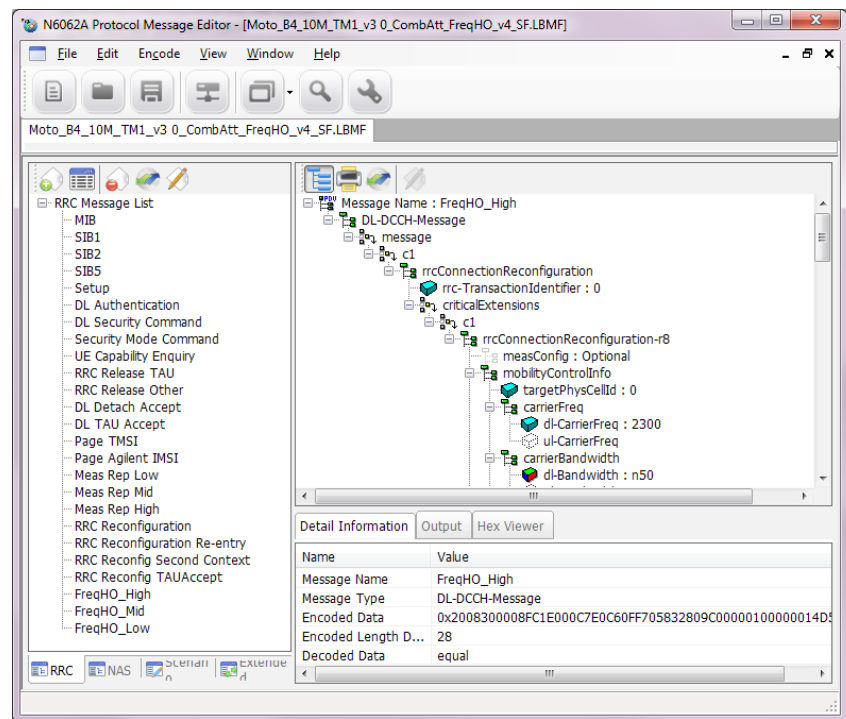


Figure 6. Absolute signaling flexibility with message editor

# LTE Protocol Logging and Analysis

LTE protocol logging and analysis are essential tools for debugging interoperability issues that are inevitable with evolving radio technologies such as LTE. Even relatively simple tests such as UE attach can become frustrating without the tools to adequately debug and resolve issues.

- Real time logging and post capture analysis of all layers from L1 to NAS
- Message filtering—sort data by protocol layer
- View detailed decodes down to bit level
- Export files into Wireshark-supported format

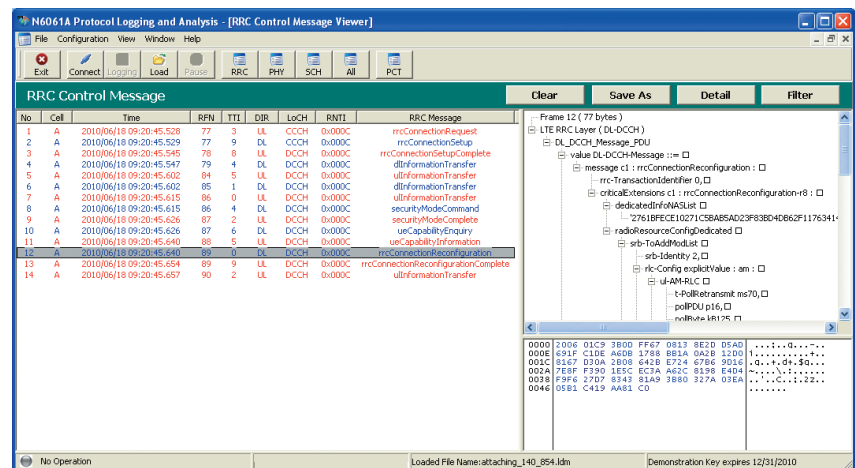


Figure 7. Real-time logging and post capture analysis of all layers from L1 to NAS

## Easily Test Real-World User Experiences

Agilent's Interactive Functional Test (IFT) software, designed to fully utilize the industry-leading signaling and data capabilities of the Agilent 8960 (E5515C/E) and PXT (E6621A) wireless communications test sets, provides a solution for real-world functional test of mobile devices. Bring real-world test into the design cycle earlier by automating and simplifying design, verification, stress test, and realistic user-experience scenarios.

- System configuration wizard
- Easy and flexible set up of operations
- Ability to perform operations simultaneously (just as an end-user would)
- Easy script development for test sequence repetition

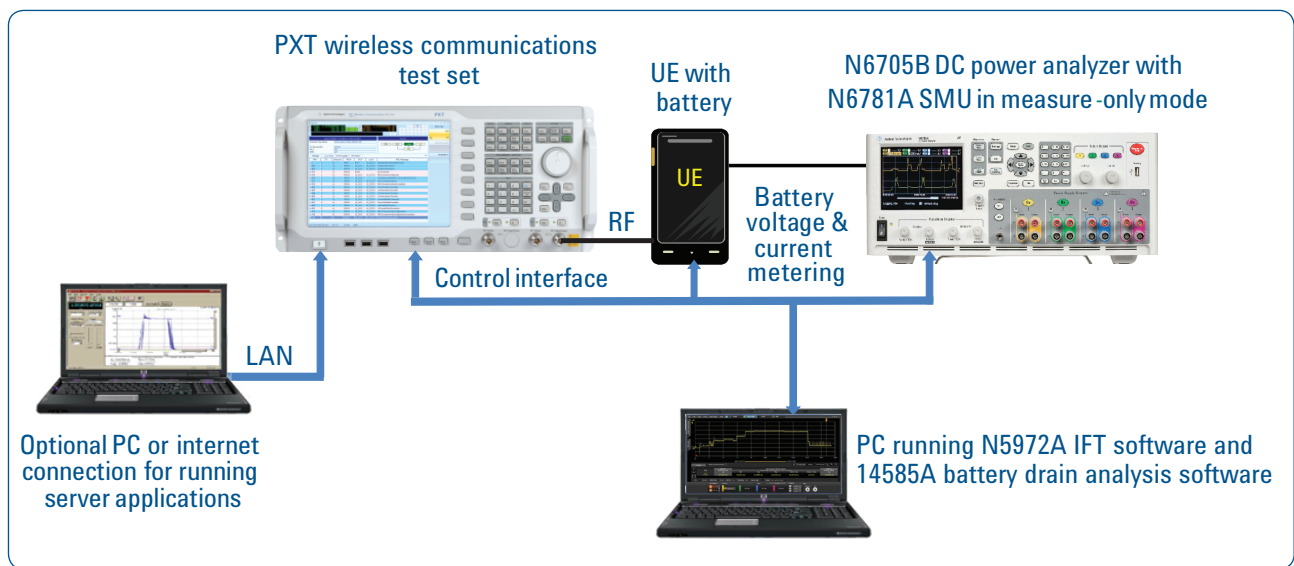


Figure 8. Interactive functional test system



# Network Operator Test Plans

## Let Agilent write your operator-specific test plans for you

In addition to requiring the minimum regulatory requirements be met, many network operators require additional testing to approve the UE for use on their networks. Understanding the test requirements and creating test plans for every operator can be time consuming and extend time to market.

Agilent smoothes the path through the operator specific approvals process by providing pre-packaged automated test scripts for many operator-specific test plans, providing the required test output in the formats required by each operator.

### **N5973A**

The N5973A scripts support the following Verizon Wireless compliance test plans 1FP: LTE-CDMA interRAT, 2FP: LTE-CDMA interRAT SVD, and 4FP: IMS VoIP

- Verizon Wireless-listed test solution
- Automatically outputs results in the Verizon Wireless required format
- Supports the established Agilent 8960 and PXT wireless communications test sets
- Includes the Agilent E6966A IMS-SIP server and client

### **N5974A-9FP**

IFT automation for AT&T Wireless compliance test plan, battery drain operations

- AT&T Wireless-listed test solution
- Automatic test scripts based on the AT&T Wireless test plan
- Compatible with selected Agilent DC power sources for battery emulation
- Supports the established Agilent 8960 and PXT test sets

### **N5978A-1FP**

IFT automation for TD-LTE IOT test plan, Phase 1

- Automatic test scripts based on the TD-LTE IOT test plan
- Supports the established Agilent 8960 and PXT test sets

# Easily Test Real-World User Experiences

Efficiently verify performance of UE in an All-IP IMS-SIP test environment

The Agilent Technologies E6966A IMS-SIP network emulator software is designed to complement the powerful 8960 and PXT wireless test sets, delivering unique capabilities for UE performance testing. These test sets establish data connection to UEs with various radio access technologies, including LTE (VoLTE), W-CDMA/HSPA, and more. Use the E6966A's IMS-SIP server/client pair for testing voice, video, and SMS services on all-IP networks.

E6966A lets you

- Manually, or automatically control via a defined API
- View detailed call flow logs and ladder diagrams
- Allocate IPv6 and IPv4 addresses
- Achieve registration, authentication, and de-registration
- View detailed call flow logs
- Insert error conditions for atypical response testing

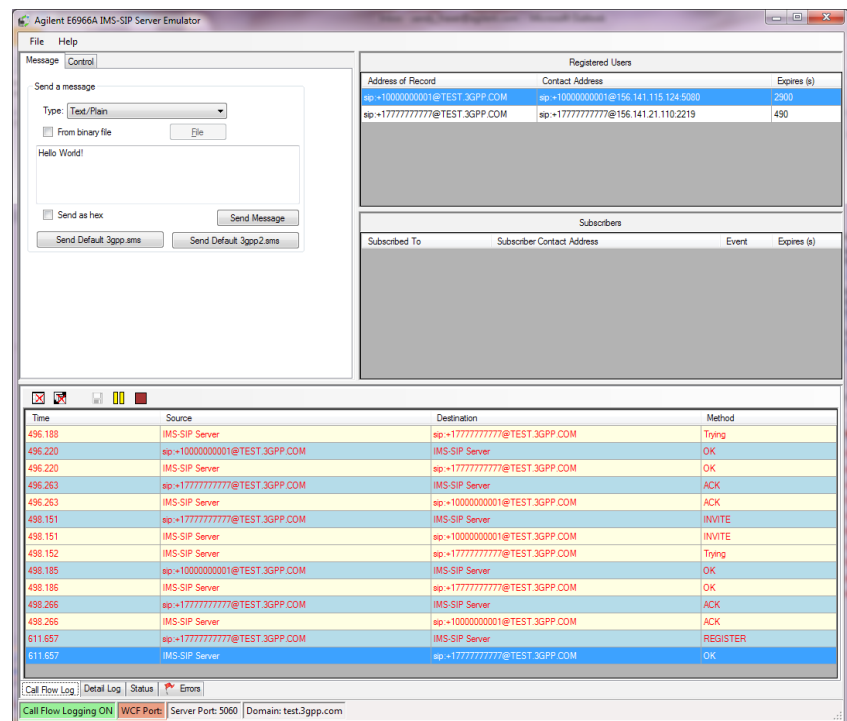


Figure 9. View of registration and connection log on E6966A IMS-SIP server

## Easily Test Real-World User Experiences

### Quickly and easily automate wireless device calibration and test

Agilent's Wireless Test Manager software makes it quick and easy to automate and optimize wireless device calibration and test. The Wireless Test Manager supports the popular wireless technologies, runs on a Windows® PC and supports Agilent test system hardware. Features include ready-to-use tests, test plans, test sequencing, Visual Basic® 6 or Visual Basic .NET test development (using customer-supplied Visual Basic 6 or Visual Basic .NET software) and custom application development utilities. (Test development platform is dependent on Wireless Test Manager product selection.)

Wireless Test Manager lets you

- Pre-defined test steps and devices with user-friendly Windows® interface
- Define and change test plans easily—without any programming
- Use Visual Basic .NET-based development platform for maximum flexibility when customizing test steps and adding new instruments
- Use PC-based software designed for fast development and deployment for manufacturing, service, and R&D needs

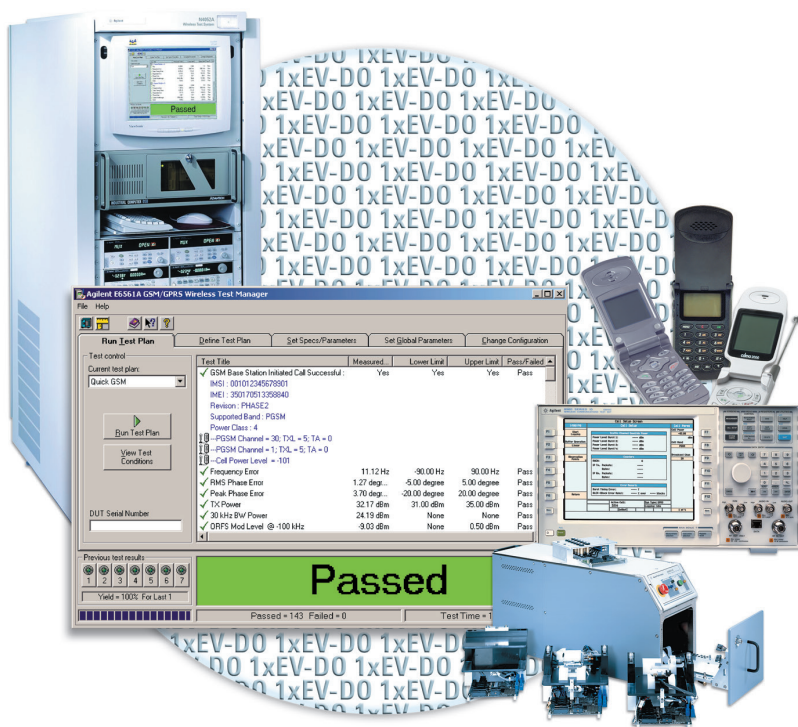


Figure 10. Simplify your automated test plans with Agilent WTM software

## Product Configuration

The flexible PXT instrument can be used in a variety of configurations.

- Optional PXT instrument hardware and firmware to configure the instrument for maximum flexibility or minimum cost
- Additional PC and applications to further extend flexibility, debug, and analysis
- Connections to Agilent 8960 with lab applications for 2G/3G/cdma2000 I-RAT handover testing
- Options automation and network operator automated test scripts

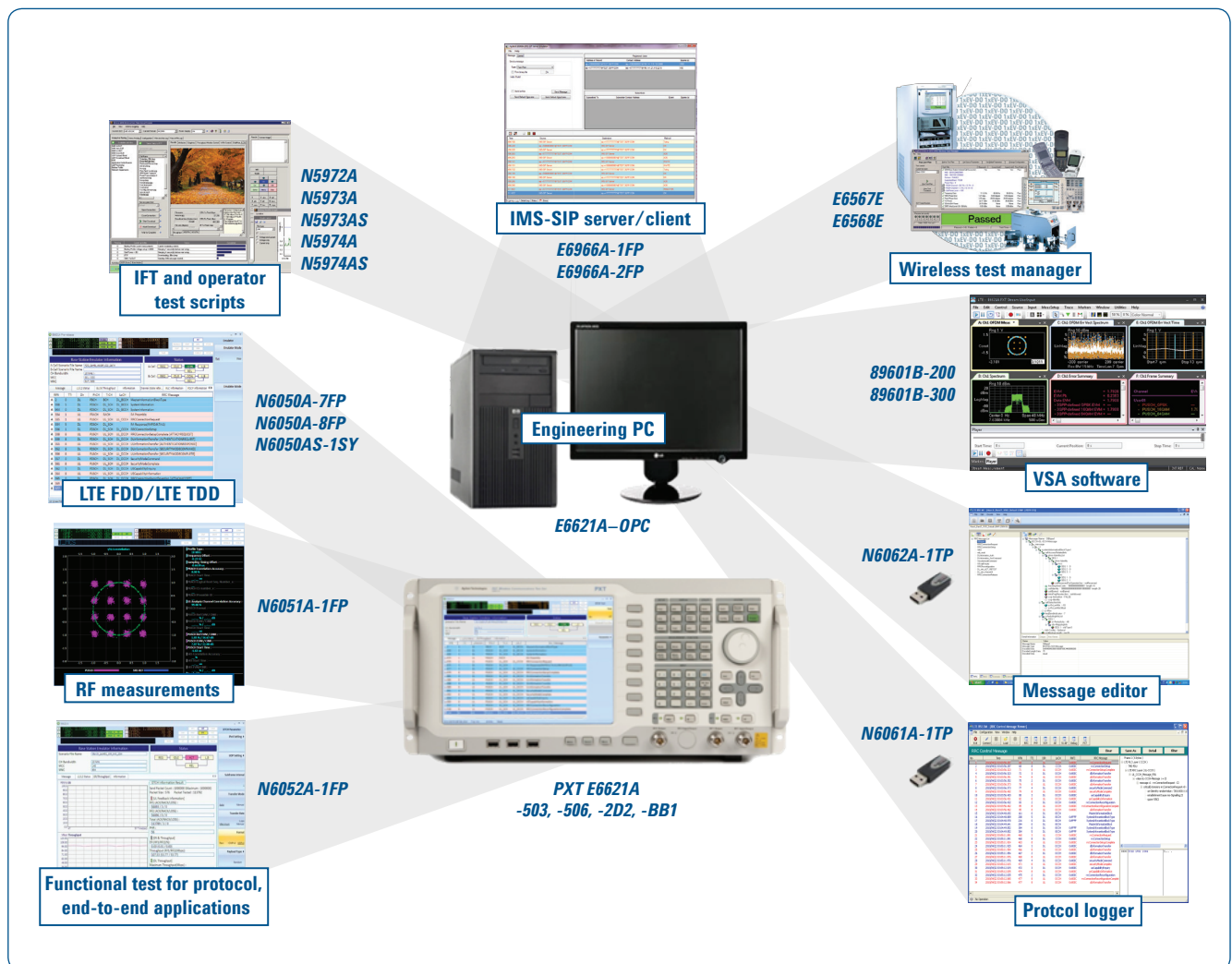


Figure 11. Maximum flexibility to satisfy all configuration needs

# E6621A Specifications

## PXT frequency range

|            |   |
|------------|---|
| E6621A     | PXT wireless communications test set              |
| E6621A-503 | Frequency range from 500 MHz to 3.0 GHz (default) |
| E6621A-506 | Frequency range from 500 MHz to 5.9 GHz           |

## Other PXT options

|            |  |
|------------|--|
| E6621A-2D2 | Downlink 2x2 MIMO (default)                                      |
| E6621A-BB1 | Enhanced baseband processing (Adds hardware required for 2-cell) |

## PXT application options

|            |   |
|------------|---|
| N6050A     | LTE mobile test software                        |
| N6050A-7FP | LTE FDD base station emulation                  |
| N6050A-8FP | LTE TDD base station emulation                  |
| N6051A-1FP | LTE RF parametric test with test mode signaling |
| N6052A-1FP | LTE functional and application test             |

## PC for N6061A and N6062A

|            |                              |
|------------|------------------------------|
| E6621A-0PC | Desktop PC, high performance |
|------------|------------------------------|

## PC application options

|            |   |
|------------|---|
| E6966A     | IMS-SIP network emulator software   |
| E6567E     | cdma2000/1xEV-DO/LTE Wireless Test Manager  |
| E6568E     | 2G/3G/LTE Wireless Test Manager   |
| N5972A-1FP | IFT software  |
| N5973A-1FP | IFT automation for Verizon Wireless compliance test plan, LTE-CDMA Inter-RAT operations |
| N5973A-2FP | IFT automation for Verizon Wireless compliance test plan, simultaneous voice and data   |
| N5973A-4FP | IFT automation for Verizon Wireless compliance test plan, IMS-VoIP                      |
| N5974A-9FP | IFT automation for AT&T Wireless compliance test plan, battery drain operations         |
| N5978A-1FP | IFT automation for TD-LTE IOT test plan, Phase 1  |
| N6061A-1TP | LTE protocol logging and analysis   |
| N6062A-1TP | LTE message editor  |

## Software and technical support contract

Software and technical support contracts (STSC) entitle you to software updates and feature enhancements, as well as direct access to technical experts. These contracts are designed to increase your productivity by delivering software updates and providing a formal technical support channel for any operational difficulties you may encounter. The N6050AS STSC entitles the user to software and support for the E6621A PXT products N6061A, N6062A, N6050A, N6051A, and N6052A for both FDD or TDD options.

The N5973AS STSC covers all automation scripts you have purchased for the N5973A and also provides you with updates to the related IFT and IMS-SIP software.

|                          |  |
|--------------------------|--|
| N5973AS-1SY              | Software and technical support contract for N5973A |
| N5974AS-1SY              | Software and technical support contract for N5974A |
| N5978AS-1SY              | Software and technical support contract for N5978A |
| N6050AS-1SY <sup>1</sup> | LTE mobile test software – 1 year STSC             |

## Start-up assistance

|           |                           |
|-----------|---------------------------|
| PS-S20-01 | 1 day start-up assistance |
|-----------|---------------------------|

## Repair options

|              |   |
|--------------|---|
| R-51B-001-C  | 1 year Return-to-Agilent warranty (required option)   |
| R-51B-001-3C | 1 year Return-to-Agilent warranty extended to 3 years |
| R-51B-001-5C | 1 year Return-to-Agilent warranty extended to 5 years |

1. Software and technical support contracts with suffix 1SY are valid for one year. To extend your software and technical contract to two or three years use suffix -2SY or -3SY.

## PXT Specifications

The PXT will meet its warranted performance after one hour within the stated environmental operating range plus one hour after turn on. Unless otherwise stated all specifications are valid over the operating temperature range. Supplemental characteristics are intended to provide additional information, useful in applying the instrument by giving typical (expected), but not warranted, performance parameters at room temperature (20 to 30 °C). These characteristics are shown in *italics*. The specifications in this data sheet apply to all instruments after and including serial number MY52190101.

### Signal analyzer specifications

#### Frequency

|                              |  |
|------------------------------|--|
| Frequency range <sup>1</sup> | 500 MHz to 3.0 GHz (E6621A-503)<br>500 MHz to 5.9 GHz (E6621A-506) |
|------------------------------|--|

|                              |      |
|------------------------------|------|
| Frequency setting resolution | 1 Hz |
|------------------------------|------|

|                    |                             |
|--------------------|-----------------------------|
| Frequency accuracy | Same as frequency reference |
|--------------------|-----------------------------|

#### Amplitude

##### Modulated level accuracy 20 MHz channel bandwidth

##### **Up to 3 GHz, input amplitude**

|                       |                 |
|-----------------------|-----------------|
| <i>–40 to –10 dBm</i> | <i>±0.90 dB</i> |
| <i>–50 to –40 dBm</i> | <i>±1.00 dB</i> |

##### **3 to 5.9 GHz, input amplitude**

|                       |                 |
|-----------------------|-----------------|
| <i>–40 to –10 dBm</i> | <i>±1.00 dB</i> |
| <i>–50 to –40 dBm</i> | <i>±1.00 dB</i> |

##### Modulated level accuracy 5, 10 MHz channel bandwidth

##### **Up to 3 GHz, input amplitude**

|                       |                 |
|-----------------------|-----------------|
| <i>–40 to –10 dBm</i> | <i>±0.70 dB</i> |
| <i>–50 to –40 dBm</i> | <i>±1.00 dB</i> |

##### **3 to 5.9 GHz, input amplitude**

|                       |                 |
|-----------------------|-----------------|
| <i>–40 to –10 dBm</i> | <i>±0.70 dB</i> |
| <i>–50 to –40 dBm</i> | <i>±1.00 dB</i> |

|                    |  |
|--------------------|--|
| <i>UL spurious</i> | <i>&lt; –65 dBc excluding IF image</i><br><i>&lt; –50 dBc including IF image</i> |
|--------------------|--|

#### Performance

##### EVM accuracy

##### **Up to 3 GHz, input amplitude**

|                       |              |
|-----------------------|--------------|
| <i>–30 to –10 dBm</i> | <i>1.50%</i> |
| <i>–40 to –30 dBm</i> | <i>3.00%</i> |

##### **3 to 5.9 GHz, input amplitude**

|                       |              |
|-----------------------|--------------|
| <i>–30 to –10 dBm</i> | <i>2.00%</i> |
| <i>–40 to –30 dBm</i> | <i>3.75%</i> |

1. Frequency can be set from 350 MHz, but with no warranted performance.

# PXT Specifications

| Signal generator specifications       |   |
|---------------------------------------|---|
| Frequency                             |   |
| Frequency range <sup>1</sup>          | 500 MHz to 3.0 GHz (E6621A-503)<br>500 MHz to 5.9 GHz (E6621A-506)                                  |
| Frequency resolution                  | 1 Hz (0.5 to 1.3 GHz)<br>2 Hz (1.3 to 3.3 GHz)<br>4 Hz (3.3 to 5.9 GHz)                             |
| Frequency accuracy                    | Same as frequency reference   |
| Amplitude                             |   |
| CW level range                        | RF Out only –110 to –10 dBm<br>RF In/Out –110 to –15 dBm  |
| Level setting resolution              | 0.1 dB  |
| CW level accuracy/flatness            |   |
| <b>Up to 3 GHz, output amplitude</b>  |   |
| –106 to –10 dBm <sup>2</sup>          | ±0.4 dB   |
| –110 to –106 dBm                      | ±0.6 dB   |
| <b>3 to 5.9 GHz, output amplitude</b> |   |
| –98 to –10 dBm <sup>2</sup>           | ±0.6 dB   |
| –110 to –98 dBm                       | ±0.7 dB   |
| Performance                           |   |
| EVM accuracy                          |   |
| <b>Up to 3 GHz, output amplitude</b>  |   |
| –22 to –10 dBm <sup>2</sup>           | 2.00%   |
| ≤ –22 dBm                             | 1.25%   |
| <b>3 to 5.9 GHz, output amplitude</b> |   |
| –22 to –10 dBm <sup>2</sup>           | 3.00%   |
| ≤ –22 dBm                             | 1.25%   |
| Harmonics                             | ≤ –30 dBc (0.5 to 3.3 GHz)<br>≤ –25 dBc (3.3 to 5.9 GHz)<br>For level ≤ –10 dBm minus internal loss |
| Sub-harmonics                         | ≤ –30 dBc (3.3 to 4.0 GHz)<br>≤ –23 dBc (4.0 to 5.9 GHz)  |
| Non-harmonic spurious                 | ≤ –46 dBc   |

1. Frequency can be set from 350 MHz, but with no warranted performance.

2. RF In/Out port is only specified up to –15 dBm.

## E6621A Specifications

### Maximum data throughput

#### Data throughput

|   |   |
|---|---|
| <i>UE test mode or end-to-end IP connection</i> | <i>102 Mbps (CAT3) DL 51 Mbps UL (CAT3)</i> |
|---|---|

### General specifications

|                                     |   |
|-------------------------------------|---|
| <i>RF input/output impedance</i>    | <i>50 <math>\Omega</math> (nominal)</i>   |
| <i>Maximum safe input level</i>     | <i>+20 dBm</i>  |
| <i>Interfaces</i>                   | <i>USB, LAN, GPIB, trigger in/out, IQ/IF inputs/outputs, reference input/output</i> |
| <i>RF reference input/output</i>    | <i>10 MHz</i>   |
| <i>Frequency reference accuracy</i> | <i><math>\pm 1\text{E-}6</math></i>   |
| <i>Aging per year</i>               | <i><math>5 \times 10\text{E-}8</math> (–20 to 70 °C)</i>                            |
| <i>Temperature stability</i>        | <i><math>2 \times 10\text{E-}8</math></i>   |
| <i>Power requirement</i>            | <i>100 to 240 Vac, 50/60 Hz</i>   |
| <i>Size (w x d x h)</i>             | <i>444 mm x 600 mm x 222 mm</i>   |
| <i>Weight</i>                       | <i>27.6 kg maximum with all possible options</i>                                    |
| <i>Operating temperature</i>        | <i>0 to 45 °C</i>   |
| <i>Storage temperature</i>          | <i>–20 to 70 °C</i>   |

## Related Agilent Literature

| Publication title   | Pub number  |
|---|-------------|
| <i>Greater Insight into LTE Design and Test Brochure</i>  | 5989-7817EN |
| <i>Accounting for Antenna and MIMO Channel Effects Using Agilent SystemVue Application Note</i>       | 5990-6435EN |
| <i>Testing Handovers Between LTE and 3G cdma2000/1xEV-DO Cellular Networks</i>                        | 5990-8362EN |
| <i>N5973A IFT Automation Scripts for the Verizon Wireless Compliance Test Plan Technical Overview</i> | 5990-9071EN |
| <i>Agilent 14565B Software and 66319B/D and 66321B/D Mobile Communications DC Sources</i>             | 5990-3503EN |





**myAgilent**

[www.agilent.com/find/myagilent](http://www.agilent.com/find/myagilent)

A personalized view into the information most relevant to you.

## Agilent Channel Partners

[www.agilent.com/find/channelpartners](http://www.agilent.com/find/channelpartners)

Get the best of both worlds: Agilent's measurement expertise and product breadth, combined with channel partner convenience.



**Three-Year Warranty**

[www.agilent.com/find/ThreeYearWarranty](http://www.agilent.com/find/ThreeYearWarranty)

Agilent's combination of product reliability and three-year warranty coverage is another way we help you achieve your business goals: increased confidence in uptime, reduced cost of ownership and greater convenience.



**Agilent Advantage Services**

[www.agilent.com/find/AdvantageServices](http://www.agilent.com/find/AdvantageServices)

Accurate measurements throughout the life of your instruments.



[www.agilent.com/quality](http://www.agilent.com/quality)

[www.agilent.com](http://www.agilent.com)

[www.agilent.com/find/e6621a](http://www.agilent.com/find/e6621a)

[www.agilent.com/find/pxt](http://www.agilent.com/find/pxt)

[www.agilent.com/find/lte](http://www.agilent.com/find/lte)

[www.agilent.com/find/sct](http://www.agilent.com/find/sct)

[www.agilent.com/find/wtm](http://www.agilent.com/find/wtm)

[www.agilent.com/find/e6966a](http://www.agilent.com/find/e6966a)

For more information on Agilent Technologies' products, applications or services, please contact your local Agilent office. The complete list is available at:

[www.agilent.com/find/contactus](http://www.agilent.com/find/contactus)

## Americas

|               |                |
|---------------|----------------|
| Canada        | (877) 894 4414 |
| Brazil        | (11) 4197 3600 |
| Mexico        | 01800 5064 800 |
| United States | (800) 829 4444 |

## Asia Pacific

|                    |                |
|--------------------|----------------|
| Australia          | 1 800 629 485  |
| China              | 800 810 0189   |
| Hong Kong          | 800 938 693    |
| India              | 1 800 112 929  |
| Japan              | 0120 (421) 345 |
| Korea              | 080 769 0800   |
| Malaysia           | 1 800 888 848  |
| Singapore          | 1 800 375 8100 |
| Taiwan             | 0800 047 866   |
| Other AP Countries | (65) 375 8100  |

## Europe & Middle East

|                |                      |
|----------------|----------------------|
| Belgium        | 32 (0) 2 404 93 40   |
| Denmark        | 45 45 80 12 15       |
| Finland        | 358 (0) 10 855 2100  |
| France         | 0825 010 700*        |
|                | *0.125 €/minute      |
| Germany        | 49 (0) 7031 464 6333 |
| Ireland        | 1890 924 204         |
| Israel         | 972-3-9288-504/544   |
| Italy          | 39 02 92 60 8484     |
| Netherlands    | 31 (0) 20 547 2111   |
| Spain          | 34 (91) 631 3300     |
| Sweden         | 0200-88 22 55        |
| United Kingdom | 44 (0) 118 927 6201  |

For other unlisted countries:

[www.agilent.com/find/contactus](http://www.agilent.com/find/contactus)

(BP-3-1-13)

Product specifications and descriptions in this document subject to change without notice.

© Agilent Technologies, Inc. 2012, 2013  
Published in USA, April 2, 2013  
5990-6434EN

*cdma2000 is a registered certification mark of the Telecommunications Industry Association. Used under license.*

*Windows, Visual Basic and Visual Studio are trademarks or registered trademarks of Microsoft Corporation in the United States and/or others countries.*



**Agilent Technologies**

# Artisan Technology Group is an independent supplier of quality pre-owned equipment

## Gold-standard solutions

Extend the life of your critical industrial, commercial, and military systems with our superior service and support.

## We buy equipment

Planning to upgrade your current equipment? Have surplus equipment taking up shelf space? We'll give it a new home.

## Learn more!

Visit us at [artisanng.com](https://www.artisanng.com) for more info on price quotes, drivers, technical specifications, manuals, and documentation.

Artisan Scientific Corporation dba Artisan Technology Group is not an affiliate, representative, or authorized distributor for any manufacturer listed herein.

**We're here to make your life easier. How can we help you today?**

(217) 352-9330 | [sales@artisanng.com](mailto:sales@artisanng.com) | [artisanng.com](https://www.artisanng.com)

