

Miteq 4247B-10

2.92 mm Connector Series Ultra-Broadband Coupler



© Artisan Technology Group

In Stock

Used and in Excellent Condition

Open Web Page

<https://www.artisanng.com/82264-1>

All trademarks, brandnames, and brands appearing herein are the property of their respective owners.



Your **definitive** source
for quality pre-owned
equipment.

Artisan Technology Group

(217) 352-9330 | sales@artisanng.com | artisanng.com

- Critical and expedited services
- In stock / Ready-to-ship

- We buy your excess, underutilized, and idle equipment
- Full-service, independent repair center

Artisan Scientific Corporation dba Artisan Technology Group is not an affiliate, representative, or authorized distributor for any manufacturer listed herein.

Couplers

1.7-26.5 GHz

2.92 mm Connectors Ultra-Broadband Couplers

- Low Return Loss
- Excellent Flatness
- Superior Directivity
- Designed for MIL Environments



Specifications

2.92 mm (F), 6 to 26.5 GHz, 20 W

FREQUENCY RANGE (GHz)	MODEL	COUPLING (dB)	DIRECTIVITY (dB min.)	INSERTION LOSS (dB)		VSWR		FREQUENCY SENSITIVITY (dB max.)	POWER		WEIGHT (max.)	
				EXCLUDING COUPLED POWER	TRUE	PRIMARY LINE (max.)	SECONDARY LINE (max.)		AVERAGE (W)	PEAK (kW)	oz.	gr.
6-26.5	4247B-10	10 ±1	12	0.9	1.5	1.5	1.5	±0.75	20	0.2	1.0	28
6-26.5	4247-20	20 ±1*	13	0.7	0.8	1.45	1.45	±0.8	20	0.2	1.0	28

2.92 mm (F), 18 to 26.5 GHz, 30 W

FREQUENCY RANGE (GHz)	MODEL	COUPLING (dB)	DIRECTIVITY (dB min.)	INSERTION LOSS (dB)		VSWR		FREQUENCY SENSITIVITY (dB max.)	POWER		WEIGHT (max.)	
				EXCLUDING COUPLED POWER	TRUE	PRIMARY LINE (max.)	SECONDARY LINE (max.)		AVERAGE (W)	PEAK (kW)	oz.	gr.
18-26.5	4017C-10	10 ±1	12	0.9	1.5	1.5	1.5	±0.75	30	0.2	1.0	28
18-26.5	4017-20	20 ±1*	13	0.7	0.8	1.45	1.45	±0.8	30	0.2	1.0	28

2.92 mm (F), 1.7 to 26.5 GHz, 20 W

FREQUENCY RANGE (GHz)	MODEL	COUPLING** (dB)	BAND SEGMENTS (GHz)	DIRECTIVITY (dB)	INSERTION LOSS (dB)		VSWR		FREQUENCY SENSITIVITY** (dB max.)	POWER		WEIGHT (max.)	
					EXCLUDING COUPLED POWER	TRUE	PRIMARY LINE (max.)	SECONDARY LINE (max.)		AVERAGE (W)	PEAK (kW)	oz.	gr.
1.7-26.5	4227-16	16 ±1*	1.7-12.4	15	0.6	0.7	1.45	1.45	±1.0 †	20	0.2	1.9	54
			12.4-18.0	12	0.8	0.9							
			18.0-26.5	12	1.2	1.3							

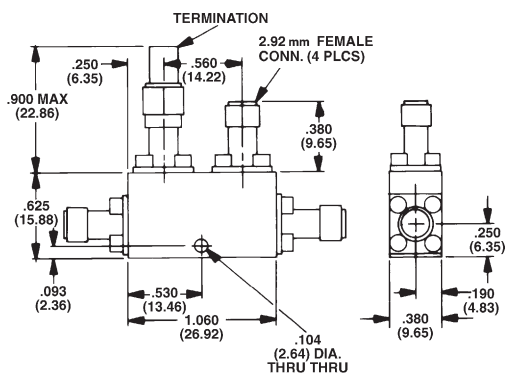
* Coupling is average value

** Referenced to output port

† Frequency sensitivity within 2-18 GHz band is ±0.5 dB

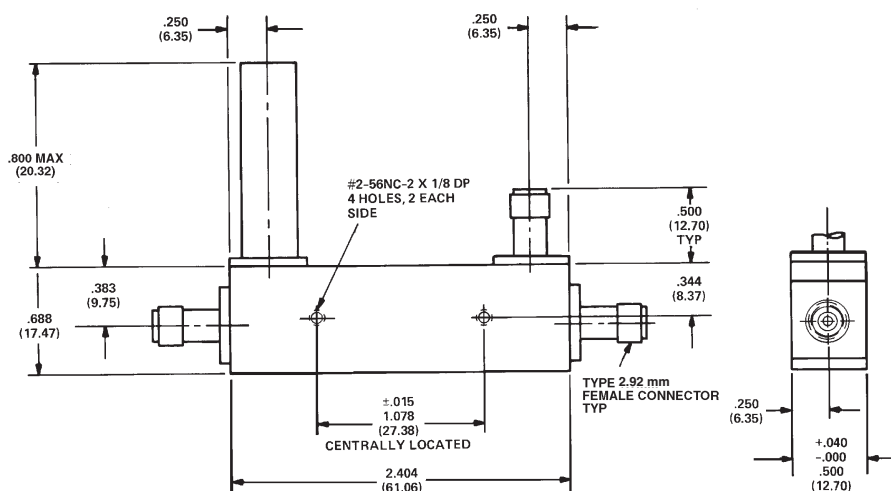


Outline Drawings



Allow .020 max. build-up of sealant per surface.

MODELS 4247B, 4247, 4017, 4017C



Allow .020 max. build-up of sealant per surface.

MODEL 4227-16

Dimensions in inches (mm in parentheses), unless otherwise specified.



Artisan Technology Group is an independent supplier of quality pre-owned equipment

Gold-standard solutions

Extend the life of your critical industrial, commercial, and military systems with our superior service and support.

We buy equipment

Planning to upgrade your current equipment? Have surplus equipment taking up shelf space? We'll give it a new home.

Learn more!

Visit us at [artisanng.com](https://www.artisanng.com) for more info on price quotes, drivers, technical specifications, manuals, and documentation.

Artisan Scientific Corporation dba Artisan Technology Group is not an affiliate, representative, or authorized distributor for any manufacturer listed herein.

We're here to make your life easier. How can we help you today?

(217) 352-9330 | sales@artisanng.com | [artisanng.com](https://www.artisanng.com)

