

# Applicom PCI1500PFB

## PCI Profibus Card



Limited Availability  
Used and in Excellent Condition

Open Web Page

<https://www.artisantg.com/63488-2>

All trademarks, brandnames, and brands appearing herein are the property of their respective owners.



Your **definitive** source  
for quality pre-owned  
equipment.

**Artisan Technology Group**

(217) 352-9330 | [sales@artisantg.com](mailto:sales@artisantg.com) | [artisantg.com](http://artisantg.com)

- Critical and expedited services
- In stock / Ready-to-ship

- We buy your excess, underutilized, and idle equipment
- Full-service, independent repair center

Artisan Scientific Corporation dba Artisan Technology Group is not an affiliate, representative, or authorized distributor for any manufacturer listed herein.

## Headquarters

### France

applicom international s.a.  
43, rue Mazagran  
76320 Caudebec-lès-Elbeuf

### International contact

tel: + 33 (0)2 32 96 26 36  
fax: + 33 (0)2 32 96 26 37  
infointl@applicom-int.com

### National contact

tel: + 33 (0)2 32 96 04 20  
fax: + 33 (0)2 32 96 04 21  
infofr@applicom-int.com

## Subsidiaries

### Germany

applicom international GmbH  
Im Gässle 9  
70771 Leinfelden-Echterdingen  
tel: + 49 711/78 23 74-0  
fax: + 49 711/78 23 74-11  
infode@applicom-int.com

### United States

applicom international, Inc  
4340 Redwood Hwy,  
Suite D-309  
San Rafael, CA 94903  
tel: + 1 (415) 472-1595  
fax: + 1 (415) 472-1596  
infousa@applicom-int.com

### Benelux

Euro View Services s.a.  
273, Chaussée de Lodelinsart  
6060 Gilly / Belgique  
tel: + 32 (0) 71 42 03 43  
fax: + 32 (0) 71 42 06 29  
infofe@applicom-int.com

### Italy

I.M.A. S.r.l.  
(Italia Manutenzione Automatismi)  
Piazza della Vittoria, 10 int.6  
I-16121 Genova  
tel: + 39 010 59 30 77  
fax: + 39 010 595 69 25  
infoit@applicom-int.com

Web

[www.applicom-int.com](http://www.applicom-int.com)

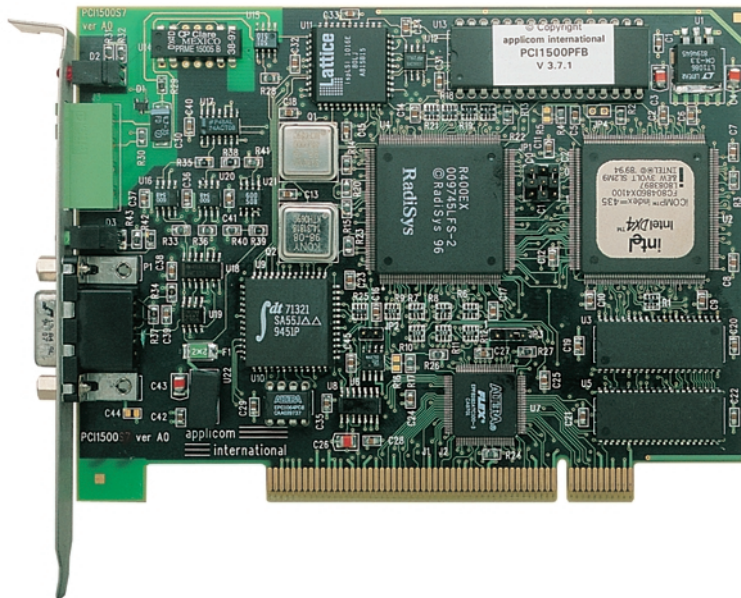


PCI<sup>1500</sup>PFB



open industrial communication concept

# applicom® PCI1500PFB



Based on a unique industrial communications concept, applicom® is the fastest, open, trouble-free approach for interfacing PC-based applications (HMI, SCADA, MES, RDBM, spreadsheets, custom applications) and devices (PLCs, I/O modules, etc.) on fieldbuses and industrial networks.

The applicom® software package includes:

- Configuration software.
- Powerful test and diagnostic tools.
- Data servers (OPC, ActiveX, DDE, FastDDE, SuiteLink).
- Development libraries for programming languages such as Visual C/C++, Visual Basic, Delphi, Borland, Windev, Labwindows CVI, LabVIEW...

Version 2.0 / july 2000 / page 2/7

Thanks to smart technology, all applicom® communications processors are able to execute all management and the processing (polling, frame management, etc.) of communications protocols, resulting in extremely fast, efficient application performance.

Particularly, the applicom® **PCI1500PFB** board is equipped with **1 Profibus port**.

applicom international is a member of **PTO** (Profibus Trade Organization) and **PNO** (Profibus Nutzerorganisation e.V.).

## Compatible platforms

- Windows 2000
- Windows NT 4.0 - Intel
- Windows 95, 98

## Protocols

| Protocol Profibus          | Device   |
|----------------------------|--|
| DP Master Class-1, Class-2 | All DP-slave devices                               |
| FMS (EN 50170)             | All FMS devices                                    |
| FDL for S5                 | SIEMENS Simatic S5                                 |
| S7 protocol                | SIEMENS Simatic S7-300 & S7-400                    |
| MPI                        | SIEMENS Simatic S7-300 & S7-400 (Programming port) |

| Serial Protocol | Device                                    |
|-----------------|---|
| PPI, PPI+       | SIEMENS Simatic S7-200 (Programming Port) |

## Technical Data

|                              |   |
|------------------------------|---|
| <b>Unit</b>                  | PCI PC board  |
| <b>Processor</b>             | Intel 80486DX4  |
| <b>Memory</b>                | 4 Mbytes dynamic RAM  |
| <b>Supported Interrupts</b>  | Hardware Plug&Play  |
| <b>DPRAM Address</b>         | Hardware Plug&Play (2 Kbytes used per board)  |
| <b>Discrete Input</b>        | Opto-coupled discrete input<br>with LED Voltage -> DC +10 to +30 or AC 24 V (50 to 60 Hz) |
| <b>Discrete Output</b>       | "WatchDog" contact output LED;<br>contact free from potential (floating) (24V DC, 0.25 A) |
| <b>Technology</b>            | SMC technology; Complies<br>with EMC for both Industrial and office use                   |
| <b>Dimensions (L x W)</b>    | 145mm x 106mm (5.70" x 4.17")   |
| <b>Consumption</b>           | 6 W (max. 1.2A)   |
| <b>Operating Temperature</b> | 0° C (32° F) up to +70° C (149° F)  |
| <b>Storage Temperature</b>   | -40° C (-92° F) up to +80° C (176° F)   |

### Profibus Port

|                             |  |
|-----------------------------|--|
| <b>Port Type</b>            | 1 Profibus port (EN 50 170)                |
| <b>Connector Type</b>       | Profibus 9-pin Sub-D female                |
| <b>Transmission LEDs</b>    | 1 Transmit LED and 1 Receive LED           |
| <b>Electrical Interface</b> | RS485 with galvanic insulation (500 volts) |
| <b>Baud Rate</b>            | from 9.6 to 1.5 Mbps                       |

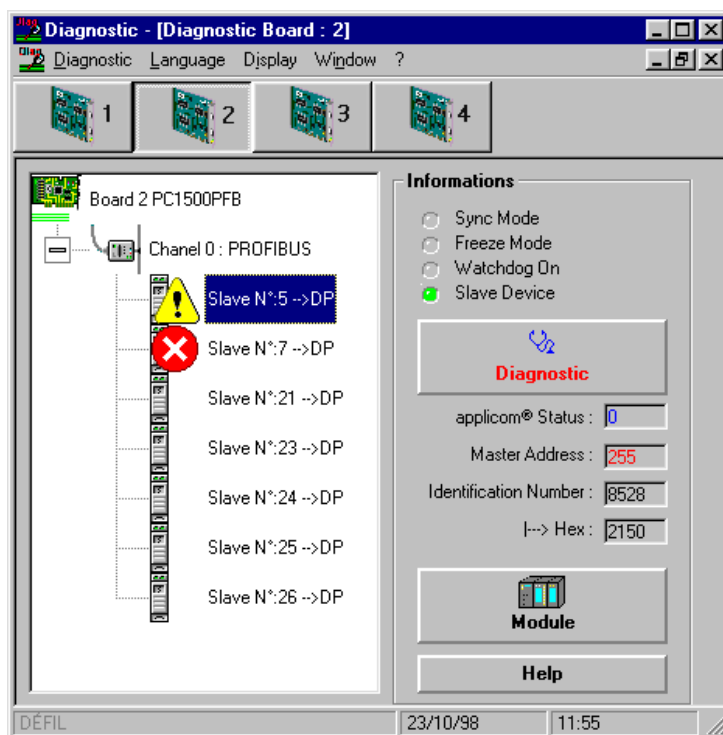
| <b>Transmission rate</b> | <b>Length per segment*</b> |
|--------------------------|----------------------------|
| 9.6 - 19.2 - 93.75 Kbps  | 1200 meters                |
| 187.5 Kbps               | 1000 meters                |
| 500 Kbps                 | 400 meters                 |
| 1.5 MBaud                | 200 meters                 |

\* May vary depending  
on cable characteristics.  
Source PNO.

## Utilities

- Board configuration utility (devices, protocols, communication parameters)-PCCONF
- Cyclic function configuration utility-PCCYC
- Diagnostics and test programs

*Example 1 : PROFIBUS DP Diagnostic tool*



## Add-on

### Connector

- Profibus connector (Siemens)



## References

| applicom® on PCI 1500PFB board | Reference     |
|--------------------------------|---------------|
| under Windows NT - Intel       | PC1500PFB/NT  |
| under Windows 95/98            | PC1500PFB/W95 |

| Connector          | Reference      |
|--------------------|----------------|
| Profibus Connector | 6GK1 500 0EA00 |

## References

| Profibus Protocol (single station licence) | Device  | Reference |
|--|---|-----------|
| DP Master                                  | All DP-slave devices                                  | PC/PFB    |
| FMS  | All FMS devices                                       | PC/PFB    |
| FDL for S5                                 | SIEMENS Simatic S5                                    | PC/PFB    |
| S7 protocol                                | SIEMENS Simatic S7-300 & S7-400                       | PC/PFB    |
| MPI  | SIEMENS Simatic S7-300 & S7-400<br>(Programming port) | PC/PFB    |

| Serial Protocol (single station licence) | Device                                       | Reference |
|--|--|-----------|
| PPI, PPI+                                | SIEMENS Simatic S7-200<br>(Programming Port) | PC/PPI    |



# Artisan Technology Group is an independent supplier of quality pre-owned equipment

## Gold-standard solutions

Extend the life of your critical industrial, commercial, and military systems with our superior service and support.

## We buy equipment

Planning to upgrade your current equipment? Have surplus equipment taking up shelf space? We'll give it a new home.

## Learn more!

Visit us at [artisanng.com](https://www.artisanng.com) for more info on price quotes, drivers, technical specifications, manuals, and documentation.

Artisan Scientific Corporation dba Artisan Technology Group is not an affiliate, representative, or authorized distributor for any manufacturer listed herein.

**We're here to make your life easier. How can we help you today?**

(217) 352-9330 | [sales@artisanng.com](mailto:sales@artisanng.com) | [artisanng.com](https://www.artisanng.com)

