



ARTISAN[®]
TECHNOLOGY GROUP

Your **definitive** source
for quality pre-owned
equipment.

Artisan Technology Group

(217) 352-9330 | sales@artisanTG.com | artisanTG.com

Full-service, independent repair center

with experienced engineers and technicians on staff.

We buy your excess, underutilized, and idle equipment

along with credit for buybacks and trade-ins.

Custom engineering

so your equipment works exactly as you specify.

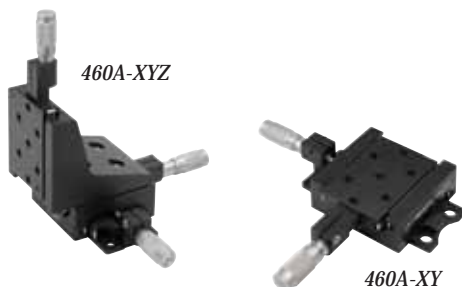
- Critical and expedited services
- In stock / Ready-to-ship
- Leasing / Rentals / Demos
- ITAR-certified secure asset solutions

Expert team | Trust guarantee | 100% satisfaction

All trademarks, brand names, and brands appearing herein are the property of their respective owners.

Find the *Newport 460-XZ* at our website: ***Click HERE***

460A Series Low-Profile Integrated Ball Bearing Linear Stages



Order actuators separately.

- Compact, low profile 0.5 in. (13 mm) travel stage
- Precision ball bearing movements
- Angular deviation better than 150 μ rad about any axis
- Left- and right-hand configurations
- Compatible with Newport manual and motorized actuators

The 460A Series Low-Profile Integrated Ball Bearing Linear Stages have an integrated, yet modular, design allowing for increased versatility. The XY Model is integrated not only for precise, orthogonal motion but also for exceptionally low profile. The Z Axis Stage/Bracket is user removable allowing conversion of an XYZ Model to an XY Model or conversion of an XZ Model to an X Model. The 460A features all aluminum construction with hardened ball bearings running along opposing pairs of polished and hardened stainless steel rods. This offers exceptional straightness of travel, but a lower load capacity than our crossed-roller bearing stages. The stages are spring loaded against the drive actuator for backlash free motion. Vertical-drive assemblies carry the load through the actuator spindle rather than the springs for positive load support.

Specifications

Maximum Stage Travel [in. (mm)]	0.5 (13)
Angular Deviation (μ rad)	<150
Max Centered Load [lb (N)]	15 (67)
Load Capacity, Vertical (XYZ, XZ) [lb (N)]	5 (22)

Ordering Information

Stages

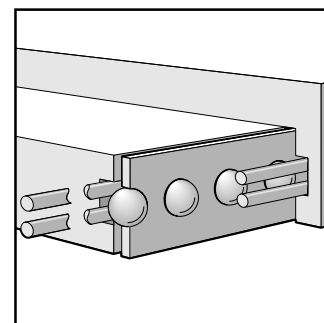
Model (Metric)	Actuators Required*
460A-X (M-460A-X)	1
460A-XY (M-460A-XY)	2
460A-XZ (M-460A-XZ)	2
460A-XYZ (M-460A-XYZ)	3

* Actuators must be ordered separately

Left-handed versions of the XY and XYZ Stages are available by appending "-LH" to the model number (e.g., 460A-XY-LH)

Recommended Actuators

Manual Drives	Description	Travel (mm)	Sensitivity (μ m)
AJS100-0.5	Fine Adjustment Screw	12.7	0.6 - 0.75
AJS127-0.5	Fine Adjustment Screw	12.7	0.6
SM-13	Micrometer	13	1
HR-13	High-Resolution Micrometer	13	0.5
DM-13	Differential Micrometer	13	0.1
DM-13L	Differential Micrometer	13	0.1
Motorized Drives			
CMA Series	Motorized Actuator	12.5–25	0.2–0.5
LTA-HS	Motorized Actuator	50	0.1
PZA12 Actuator	NanoPZ actuator, 12.5 mm travel	12.5	0.03

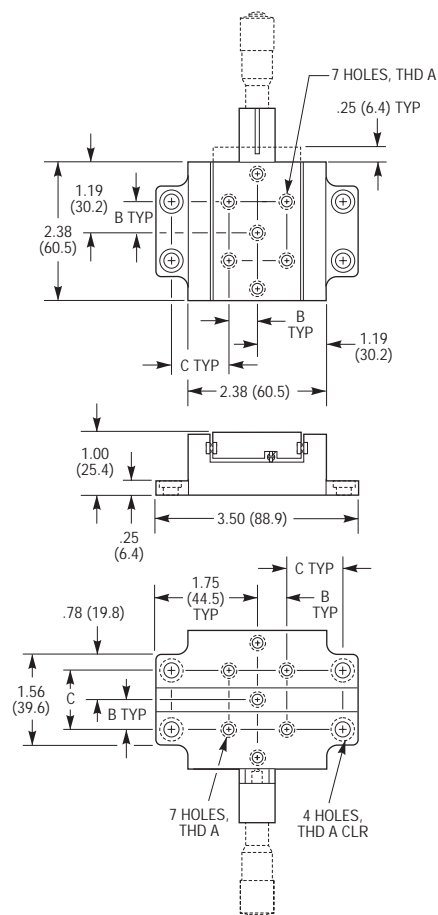
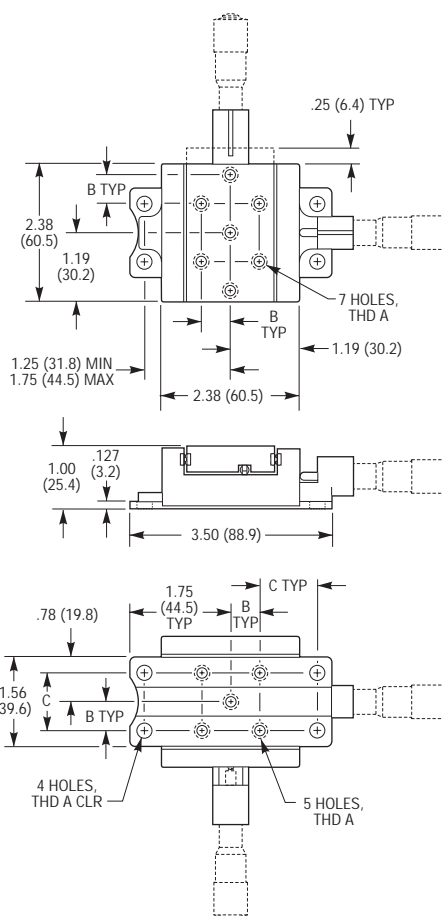


Preloaded precision ball bearing movements provide reduced friction and capability to make small controlled movements. Bearings are captured in hardened steel rod guides.



460A-XZ shown with SM-13 micrometers.

CAD See our website
for CAD files

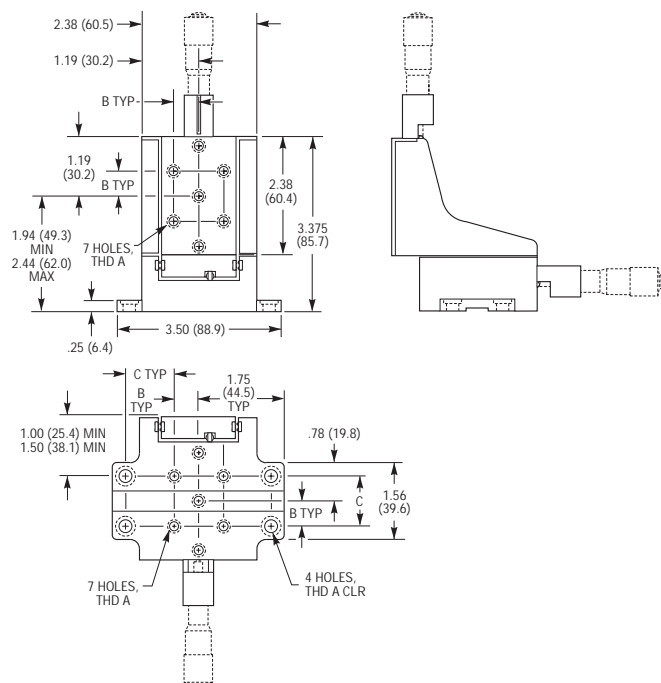
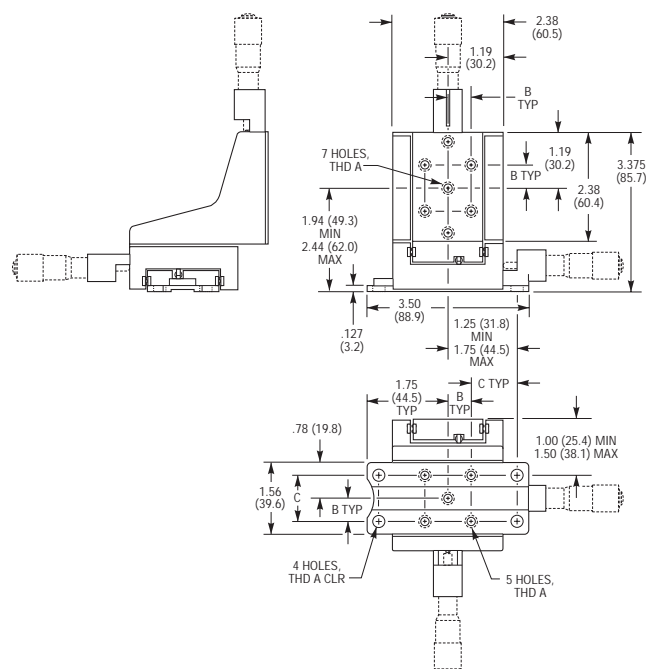
Model 460A-X**Model 460A-XY**
(RH shown, LH opposite)

DM-13 Differential Micrometer (see page 928)



CMA Stepper-motor, Open- and Closed-Loop DC Actuators (see page 839)

	Thread	Dimensions [in. (mm)]		
Model (Metric)	A	B	C	
460A-X (M-460A-X)	1/4-20 (M6)	0.500 (12.5)	1.000 (25.0)	
460A-XY (M-460A-XY)	1/4-20 (M6)	0.500 (12.5)	1.000 (25.0)	
460A-XZ (M-460A-XZ)	1/4-20 (M6)	0.500 (12.5)	1.000 (25.0)	
460A-XYZ (M-460A-XYZ)	1/4-20 (M6)	0.500 (12.5)	1.000 (25.0)	

Model 460A-XZ**Model 460A-XYZ**
(RH shown, LH opposite)

Artisan Technology Group is an independent supplier of quality pre-owned equipment

Gold-standard solutions

Extend the life of your critical industrial, commercial, and military systems with our superior service and support.

We buy equipment

Planning to upgrade your current equipment? Have surplus equipment taking up shelf space? We'll give it a new home.

Learn more!

Visit us at [artisanng.com](https://www.artisanng.com) for more info on price quotes, drivers, technical specifications, manuals, and documentation.

Artisan Scientific Corporation dba Artisan Technology Group is not an affiliate, representative, or authorized distributor for any manufacturer listed herein.

We're here to make your life easier. How can we help you today?

(217) 352-9330 | sales@artisanng.com | [artisanng.com](https://www.artisanng.com)

