

SST SST-PB3-PCU
PROFIBUS Interface PCI Card



**Limited Availability
Used and in Excellent Condition**

Open Web Page

<https://www.artisanng.com/81623-1>

All trademarks, brandnames, and brands appearing herein are the property of their respective owners.



Your **definitive** source
for quality pre-owned
equipment.

Artisan Technology Group

(217) 352-9330 | sales@artisanng.com | artisanng.com

- Critical and expedited services
- In stock / Ready-to-ship
- We buy your excess, underutilized, and idle equipment
- Full-service, independent repair center

Artisan Scientific Corporation dba Artisan Technology Group is not an affiliate, representative, or authorized distributor for any manufacturer listed herein.



BradCommunications™ SST™ PROFIBUS network interfaces provide high-performance control and the support required for your PROFIBUS applications.

SST™ PROFIBUS Interfaces

For Controlling and Monitoring PROFIBUS Applications

Features

- PCI bus format available with one and two channels
- Simultaneous execution of PROFIBUS DP Master, DP Slave and FDL (layer 2)
- Master Class 1 and Class 2 DPV1 support through Windows API
- Supports all standard baud rates: 9.6 Kbaud to 12 Mbaud
- Flash memory for storage of configuration
- Supports device configuration and diagnostics through FDT using commDTM
- Supports all PROFIBUS baud rates including 45.45 kbps
- Diagnostic LEDs for system status, watchdog timeout, and communications status

OS and Drivers Supported

- Windows NT4 / 2000 / XP drivers
- DP configuration software with enhanced diagnostics
- OPC Server v3.0
- Open, documented memory map interface with example C source code and Windows 32-bit DLLs for custom driver development

Related Products



BradConnectivity™
Diagnostic
D-Sub Connector



PCI
EXPRESS®

PC/104



3.3V - 5V
PCI-X
Universal Bus

RoHS CE

BradCommunications™ network interface cards are ideal for applications where high-performance control and reliability are required. Backed by superior support and service, BradCommunications network interfaces support a wide range of network protocols and bus formats.

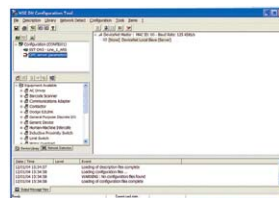
Overview

BradCommunications SST™ network interface cards for PROFIBUS can be found in many applications including:

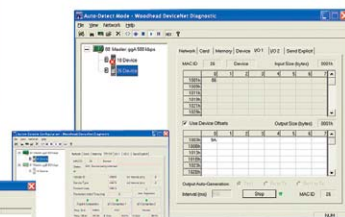
- Operator interface
- Human-machine interface
- PC control
- Device development
- Network diagnostics

Software Tools

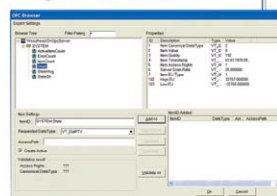
Software tools available for BradCommunications SST PROFIBUS network interface cards enable fast integration of industrial communications into your application.



Configuration Console



Diagnostic and
Test Tools



OPC Browser

BradCommunications™



Network Specifications

Protocol	<ul style="list-style-type: none"> PROFIBUS Master DP-V0, Class 1 and Class 2 PROFIBUS Slave DP-V0 PROFIBUS Master DP-V1, Class 1 and Class 2 FDL Layer 2
Data Rate	<ul style="list-style-type: none"> All PROFIBUS data rates up to 12Mbps
Cable	<ul style="list-style-type: none"> Belden 3079A Brad Harrison® 85-0001 PVR2 conductor with shield, UL-listed
Connector	<ul style="list-style-type: none"> DB9 female connector per port/channel Brad Harrison Diagnostic D-Sub connector part number: MA9D01-42
Isolation	<ul style="list-style-type: none"> 1000 V

Hardware Specifications

	PCI / PCI Express	ISA	PC/104
Bus Interface	PCI: Compliant with PCI 2.2 PCI Express: PCI Express 1x, rev 1.0a	Compliant with EISA Specification Version 3.12	Compliant with PC/104 Specification Version 2.3
Processor	ColdFIRE 5272		
Memory	One channel: 256K Window Two channel: 512K Window	Min. 8K Window in host memory map (max. 256K and default 16K)	Min. 8K Window in host memory map (max. 256K and default 16K)
Diagnostics	LEDs for system status and communications status		
Interrupts	Hardware Plug & Play (32 Kbytes used per card)	Software selectable level IRQ 0 through 7	
Dimensions (Length x Width)	6.875 in x 4.2 in (17.463 cm x 10.668 cm)	6.225 in x 4.2 in (15.812 cm x 10.668 cm)	9.588 cm x 9.017 cm (3.775 in x 3.550 in)
Typical Current Draw	600 mA		
Voltage Requirements	5V and 3.3V	5V	
Resources	PCI Region 0=128 bytes PCI memory PCI Region 2=256K of 32-bit PCI memory (one channel) and 512K of 32-bit PCI memory (two channels) PCI Region 3=32 bytes of 32-bit PCI memory One PCI interrupt	ISA Memory Region = 256K of 16-bit ISA memory ISA I/O Region = 8 bytes of ISA I/O memory One ISA interrupt	PC/104 Memory Region = 256K of 16-bit PC/104 memory PC/104 I/O Region = 8 bytes of PC/104 I/O memory One PC/104 interrupt
Operating Temperature	0°C (32°F) up to +60°C (140°F)		
Storage Temperature	-40°C (-40°F) up to +85°C (185°F)		
Humidity	5% to 95% non-condensing		
RoHS compliant	Yes	Yes	No

Ordering Information

Part Number	SAP	Product Description	Other Related Products
SST-PB3-PCU	1120110020	PROFIBUS card, Universal PCI bus, 3.3V/5V, PCI-X compatible	IP67 and IP20 I/O Gateways Cable Assemblies Diagnostic Tools Network Interfaces
SST-PB3-PCU-2	1120110022	PROFIBUS card, Universal PCI bus, 3.3V/5V, PCI-X compatible, two channels	
SST-PB3-PCIE-2	1120110029	PROFIBUS card, PCI Express, two channels	
SST-PB3-104	1120130012	PROFIBUS card, PC/104	
SST-PB3-ISA	1120120004	PROFIBUS card, ISA	
SST-PB3-CNF-P SST-PB3-CNF-U SST-PB3-OPC	1120300008 1120300009 1120280030	Configuration Console Application, parallel key Configuration Console Application, USB key OPC Server	

Brad[®]
from **molex**

To contact us: www.woodhead.com

Reference Number: DW200578 Date Published: January 2009

North America: US: +1 800 225 7724 – Canada: +1 519 725 5136

Europe: France: +33 2 32 96 04 20 – Germany: +49 7252 94 96 0 – Italy: +39 010 59 30 77 – United Kingdom: +44 1495 356300

Asia: Shanghai, China: +86 21-5835-9885 - Tianjin, China: +86 22-23321717
Singapore: +65 6268-6868 – Yamato, Japan: +81 46-265-2428 – Nagoya, Japan: +81 52-221-5950

BradCommunications, BradConnectivity and SST are trademarks of Woodhead Industries.
© 2008 Molex Incorporated.

Artisan Technology Group - Quality Instrumentation ... Guaranteed | (888) 88-SOURCE | www.artisanng.com

Artisan Technology Group is an independent supplier of quality pre-owned equipment

Gold-standard solutions

Extend the life of your critical industrial, commercial, and military systems with our superior service and support.

We buy equipment

Planning to upgrade your current equipment? Have surplus equipment taking up shelf space? We'll give it a new home.

Learn more!

Visit us at [artisan^{tg}.com](https://www.artisantg.com) for more info on price quotes, drivers, technical specifications, manuals, and documentation.

Artisan Scientific Corporation dba Artisan Technology Group is not an affiliate, representative, or authorized distributor for any manufacturer listed herein.

We're here to make your life easier. How can we help you today?

(217) 352-9330 | sales@artisan^{tg}.com | [artisan^{tg}.com](https://www.artisantg.com)

