

HAAKE TEE/Z48

Electrical Temperature Controlled Cup Holder



\$1495.00

In Stock

Qty Available: 1

New From Surplus Stock

Open Web Page

<https://www.artisanTG.com/67034-4>

All trademarks, brandnames, and brands appearing herein are the property of their respective owners.



Your **definitive** source
for quality pre-owned
equipment.

Artisan Technology Group

(217) 352-9330 | sales@artisanTG.com | artisanTG.com

- Critical and expedited services
- In stock / Ready-to-ship

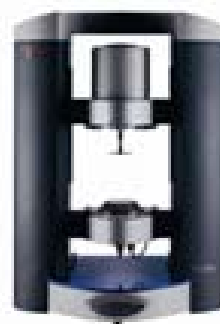
- We buy your excess, underutilized, and idle equipment
- Full-service, independent repair center

Artisan Scientific Corporation dba Artisan Technology Group is not an affiliate, representative, or authorized distributor for any manufacturer listed herein.

Accessories for HAAKE MARS and HAAKE RheoStress 6000

Table of Contents

Accessories for HAAKE MARS and HAAKE RheoStress 6000	3
Test fluids and standard liquids	3
Rheometer & Rheology Software	3
Accessories for HAAKE MARS and HAAKE RheoStress 6000	4
Liquid temperature control unit for cone/plate measuring geometries and accessories	4
UTCP/P Peltier temperature control unit for cone/plate measuring geometries and accessories	5
Electrically temperature control unit for cone/plate measuring geometries and accessories	6
Measuring geometries: plate-cone and plate-plate up to 500°C and accessories	7
Liquid temperature controlled and electrical cylinder sensor system and accessories	7
Pressure sensor system D100/200 and accessories	9
Pressure sensor system D400/300 and accessories	10
Hastelloy pressure sensor system and accessories	10
Sensors and accessories for electro-rheology	11
Measuring Cell for Construction Material	11
SHRP bitumen sensor	11
UV curing cell	12
Accessories for HAAKE MARS	13
High temperature sensor system	13
Measuring Cell for Construction Material	13
Electro-rheology	13
Controlled Test Chamber (CTC) and accessories	14
RheoScope Module and accessories	16
Accessories for HAAKE RheoStress 6000	17
High temperature sensor system	17
Electro-rheology	
Specials (BAs)	18



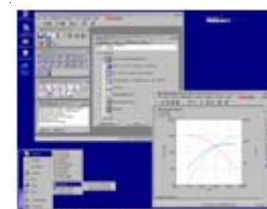
Accessories for HAAKE MARS and HAAKE RheoStress 6000

Order No.	Type	Description
Test fluids and standard liquids		
082-5042	E7	Test fluid 100ml, EU Safety Certificate: 5mPas (20°C)
082-5043	E200	Test fluid 100ml, EU Safety Certificate: 120mPas (20°C)
082-5044	E2000	Test fluid 100ml, EU Safety Certificate: 1900mPas(20°C)
082-5046	E6000	Test fluid 100ml, EU Safety Certificate: 6000mPas(20°C)
082-5336	E15000	Test fluid 100ml, EU Safety Certificate: 15000mPas (20°C)
082-5335	E40000	Test fluid 100ml, EU Safety Certificate: 40000mPas (20°C)
082-5412	E33	Test fluid 500ml, EU Safety Certificate: 33mPas (20°C)
082-5411	E330	Test fluid 500ml, EU Safety Certificate: 330mPas (20°C)
082-5410	E1300	Test fluid 500ml, EU Safety Certificate: 1300mPas (20°C)
082-5303	100BW	Standard liquid 100ml, DKD Certificate 100BW: 100mPas (20, 23, 25, 30, 40 and 100°C)
082-5304	2000AW	Standard liquid 100ml, DKD Certificate 2000AW: 2000mPas (20, 23, 25, 30, 40 and 100°C)
082-5305	10000BW	Standard liquid 100ml, DKD Certificate 10000BW: 10000mPas (20, 23, 25, 30, 40 and 100°C)
082-5373	S100	Test fluid (Silicon Oil) 500ml, EU Safety Certificate: approx. 100mPas (25°C)
082-5374	S1000	Test fluid (Silicon Oil) 500ml, EU Safety Certificate: approx. 1000mPas (25°C)
082-5375	S5000	Test fluid (Silicon Oil) 500ml, EU Safety Certificate: approx. 5000mPas (25°C)
082-5376	S10000	Test fluid (Silicon Oil) 500ml, EU Safety Certificate: approx. 10000mPas (25°C)
082-5377	S30000	Test fluid (Silicon Oil) 500ml, EU Safety Certificate: approx. 30000mPas (25°C)



Rheometer & Rheology Software

098-5045	TTS	TTS tool for HAAKE RheoWin 3
098-5046	Spectra	Spectra tool for HAAKE RheoWin 3
098-5047	MWD	MWD tool for HAAKE RheoWin 3
098-5044	Part 11	CFR Part 11 tool for HAAKE RheoWin 3 for rheometers (models series 1, RSXXX and MARS)
098-5056	RheoAdapt	RheoAdaptive tool for HAAKE RheoWin 4 (for rheometer models MARS, RS6000 and RS600)



Accessories for HAAKE MARS and HAAKE RheoStress XXX

222-1211	FU	Standard filter unit for RS
222-1214		Exchange filter insert (fine)
222-1213		Exchange filter insert (activated carbon)
222-1434	Carat	Air compressor Carat (230V/50Hz) with dryer, filter unit and precision pressure controller
222-1435	Carat	Air compressor Carat (115V/60Hz) with dryer, filter unit and precision pressure controller
222-1567		Preliminary filter for compressor Carat
222-1666		Precision pressure controller for compressor Carat



Order No.	Type	Description
222-1411		Air dryer for air bearing systems
222-1508		Dryer pellets for compressor Carat
222-1827	Carat	Air compressor Carat (230V/50Hz) with dryer and filter unit, for continuouse operation
222-1828	Carat	Air compressor Carat (115V/60Hz) with dryer and filter unit, for continuouse operation
222-0608		Double wall test sample protection shield to prevent heat loss for cone/plate geometry (Dewar)
222-1394	Ring	Protection ring out of glass, H=23mm (2pcs.)
222-1613	Ring	Protection ring out of glass, H=30mm (2pcs.)
222-1276		Adapter coupling with bore 6mm for RV/RS
222-1322	Cable	RS232 cable (9PIN female - 25PIN male)
222-1515		Sample hood against heat loss and solvent evaporation out of teflon with nitrogen-inlet (up to 240°C)
222-1516		Transparent sample hood against heat loss and solvent evaporation for cone/plate geometry out of polycarbonate (max. 100°C)
222-0607		Solvent trap made of glass for cone/plate geometry
222-1289		Solvent trap made of aluminium for cone/plate geometry
003-0139		Temperature measuring instrument (Testo), temperature sensor 003-0142 or 799-3094 req.
003-0142		Temperature sensor (Testo), requires temperature controller 003-0139
799-3094		Temperature sensor (Testo), requires temperature controller 003-0139, with silicon sample
222-1341		Holding spring for measuring plates for RSXXX (3pcs.)
222-1720		Ring for Peltier-temperature control unit for RSXXX and MARS as well as plate / cone temperature control units series 1
222-1776		Sample loading tool for all plate / cone measuring geometries with mold for diameter adaptation incl. disposable steel strips (50 pcs.)
222-1805		Steel strips for sample loading tool (50 pcs.)
222-1777		Sample trimming tool for plate / cone measuring geometries



Liquid temperature control unit for cone/plate measuring geometries

222-0609	TEF/P	Liquid controlled base plate for cone/plate geometry up to 350°C for RSXXX and MARS, measuring plate (MP) and circulator required
222-1294		Adapter for metal hose (2 pcs.)
222-0610		Metal armored Viton hoses (2pcs.) up to 150°C with brass connections (2 pcs. 333-0302 req.)
002-3443		Quick connector adapter, angled (2 pcs. required)
002-8020		Hose connector without valve



Measuring geometries: plate-cone and plate-plate

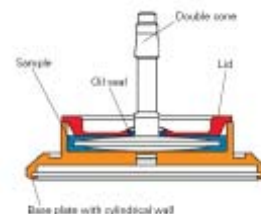
222-1298	MP60	Measuring plate MP60, D=60mm for RSXXX and MARS
222-1275	C60/4	Cone C60/4°, D=60mm, low inertia for RV/RS
222-1274	C60/2	Cone C60/2°, D=60mm, low inertia for RV/RS
222-1273	C60/1	Cone C60/1°, D=60mm, low inertia for RV/RS
222-1272	C60/0.5	Cone C60/0.5°, D=60mm, low inertia for RV/RS
222-1271	PP60	Plate PP60, D=60mm, low inertia for RV/RS
222-1299	MP35	Measuring plate MP35, D=35mm for RSXXX and MARS
222-1270	C35/4	Cone C35/4°, D=35mm, low inertia for RV/RS
222-1269	C35/2	Cone C35/2°, D=35mm, low inertia for RV/RS
222-1268	C35/1	Cone C35/1°, D=35mm, low inertia for RV/RS
222-1267	C35/0.5	Cone C35/0.5°, D=35mm, low inertia for RV/RS
222-1266	PP35	Plate PP35, D=35mm, low inertia for RV/RS
222-1300	MP20	Measuring plate MP20, D=20mm for RSXXX and MARS
222-1254	C20/2	Cone C20/2°, D=20mm, low inertia for RV/RS
222-0589	C20/1	Cone C20/1°, D=20mm, low inertia for RV/RS
222-1253	C20/0.5	Cone C20/0.5°, D=20mm, low inertia for RV/RS
222-1514	C20/0.3	Cone C20/0.3°, D=20mm, low inertia for RV/RS
222-0586	PP20	Plate PP20, D=20mm, low inertia for RV/RS



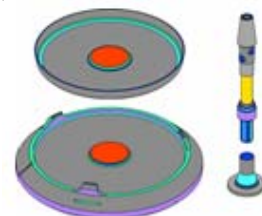
Order No.	Type	Description
Measuring geometries: plate-plate (serrated)		
222-1220	MP35S	Measuring plate MP35S, D=35mm, serrated for RSXXX and MARS
222-1223	PP35S	Plate PP35S, D=35mm, serrated for RV/RS
222-1221	MP20S	Measuring plate MP20S, D=20mm, serrated for RSXXX and MARS
222-1222	PP20S	Plate PP20S, D=20mm, serrated for RV/RS
222-1370	HPP20S	Plate HPP20S, D=20mm, serrated, with ceramic shaft for RV/RS



Measuring geometries: double cone		
222-1231	MP60/DC	Measuring plate MP60/DC for RSXXX and MARS
222-1229	DC60/2	Double cone DC60/2°, D=60mm, low inertia with cover for RV/RS
222-1328	DC60/1	Double cone DC60/1°, D=60mm, low inertia with cover for RV/RS



Measuring geometries: plate-plate (disposable)		
222-1375		Holder for disposable plate PP-E, with ceramic shaft for RV/RS
222-1295	PP20E	Disposable plate (upper geometry) PP20E (100pcs.) made of aluminium for RV/RS
222-1317	Holder MP20E	Holder for disposable measuring plate MP20E (lower measuring geometry) for RSXXX and MARS
222-1314	MP20E	Disposable measuring plate (lower measuring geometry) MP20-E (100pcs.) made of aluminium for RV/RS
222-1375		Holder for disposable plate PP-E, with ceramic shaft for RV/RS
222-1238	PP60E	Disposable plate (upper geometry) PP60-E (100pcs.) made of aluminium for RV/RS
222-1429	Holder MP60E	Holder for disposable measuring plate MP60-E for RSXXX and MARS
222-1234	MP60E	Disposable plate (lower geometry) MP60-E (100pcs.) made of aluminium for RV/RS



UTCP/P Peltier temperature control unit		
222-1669	UTC	Universal temperature control box UTC
222-1668	UTCP/P	Peltier temperature control unit for cone/plate measuring geometry, -60 up to 200°C for RXXX and MARS (control box UTC is required)
222-1759	UTC-Pack	UTC Peltier-package consisting of UTC box and UTCP/P
222-1791		Metal armored Viton hoses (2pcs.) up to 150°C with connections made of stainless steel (2 pcs. 006-0748 req.)
006-0748		Adapter (stainless steel) from R1/4" to M16x1
222-1529	HX1P	Heat exchanger HX1 P for Peltier temperature control unit (230V/50Hz)
222-1672	HX1P/US	Heat exchanger HX1P (120V/60Hz) for Peltier temperature control unit
222-1511	HX1A	Heat exchanger HX1 A for Peltier temperature control unit (230V/50-60Hz)
222-1512	HX1A	Heat exchanger HX1 A for Peltier temperature control unit (115V/60Hz)
222-1720		Ring for Peltier-temperature control unit for RSXXX and MARS as well as plate / cone temperature control units series 1

UTCP/P measuring geometries: plate-cone and plate-plate		
222-1550	MPC60	Measuring plate cover MPC60, D=60mm for series 1, RSXXX and MARS (Peltier)
222-1271	PP60	Plate PP60, D=60mm, low inertia for RV/RS
222-1275	C60/4	Cone C60/4°, D=60mm, low inertia for RV/RS
222-1274	C60/2	Cone C60/2°, D=60mm, low inertia for RV/RS
222-1273	C60/1	Cone C60/1°, D=60mm, low inertia for RV/RS
222-1272	C60/0.5	Cone C60/0.5°, D=60mm, low inertia for RV/RS
222-1549	MPC35	Measuring plate cover MPC35, D=35mm for series 1, RSXXX and MARS (Peltier)
222-1266	PP35	Plate PP35, D=35mm, low inertia for RV/RS
222-1270	C35/4	Cone C35/4°, D=35mm, low inertia for RV/RS
222-1269	C35/2	Cone C35/2°, D=35mm, low inertia for RV/RS
222-1268	C35/1	Cone C35/1°, D=35mm, low inertia for RV/RS
222-1267	C35/0.5	Cone C35/0.5°, D=35mm, low inertia for RV/RS



Order No.	Type	Description
222-1548	MPC20	Measuring plate cover MPC20, D=20mm for series 1, RSXXX and MARS (Peltier)
222-0586	PP20	Plate PP20, D=20mm, low inertia for RV/RS
222-1254	C20/2	Cone C20/2°, D=20mm, low inertia for RV/RS
222-0589	C20/1	Cone C20/1°, D=20mm, low inertia for RV/RS
222-1253	C20/0.5	Cone C20/0.5°, D=20mm, low inertia for RV/RS
222-1514	C20/0.3	Cone C20/0.3°, D=20mm, low inertia for RV/RS



UTCP/P Measuring geometries: plate-plate (serrated)

222-1555	MPC60S	Measuring plate cover MPC60S, D=60mm, serrated for series 1, RSXXX and MARS (Peltier)
222-1225	PP60S	Plate PP60S, D=60mm, serrated for RV/RS
222-1554	MPC35S	Measuring plate cover MPC35S, D=35mm, serrated for series 1, RSXXX and MARS (Peltier)
222-1223	PP35S	Plate PP35S, D=35mm, serrated for RV/RS
222-1553	MPC20S	Measuring plate cover MPC20S, D=20mm, serrated for series 1, RSXXX and MARS (Peltier)
222-1222	PP20S	Plate PP20S, D=20mm, serrated for RV/RS
222-1370	HPP20S	Plate HPP20S, D=20mm, serrated, with ceramic shaft for RV/RS

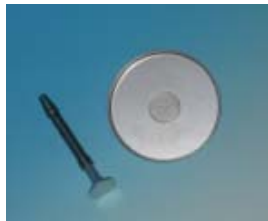
UTCP/P Measuring geometries: double cone

222-1546	MPC/DC60	Measuring plate cover MPC/DC60 (double cone) D=60mm, stainless steel for series 1, RSXXX and MARS (Peltier)
222-1229	DC60/2	Double cone DC60/2°, D=60mm, low inertia with cover for RV/RS
222-1328	DC60/1	Double cone DC60/1°, D=60mm, low inertia with cover for RV/RS



UTCP/P Measuring geometries: plate-plate (disposable)

222-1375		Holder for disposable plate PP-E, with ceramic shaft for RV/RS
222-1551	MPC/MP20-E	Measuring plate cover as holder for disposable measuring plate MP20-E for series 1, RSXXX and MARS (Peltier)
222-1295	PP20E	Disposable plate (upper geometry) PP20E (100pcs.) made of aluminium for RV/RS
222-1314	MP20E	Disposable measuring plate (lower measuring geometry) MP20-E (100pcs.) made of aluminium for RV/RS
222-1552	MPC/MP60-E	Measuring plate cover as holder for disposable measuring plate MP60-E for series 1, RSXXX and MARS (Peltier)
222-1238	PP60E	Disposable plate (upper geometry) PP60-E (100pcs.) made of aluminium for RV/RS
222-1234	MP60E	Disposable plate (lower geometry) MP60-E (100pcs.) made of aluminium for RV/RS



UV curing cell

222-1375		Holder for disposable plate PP-E, with ceramic shaft for RV/RS
222-1295	PP20E	Disposable plate (upper geometry) PP20E (100pcs.) made of aluminium for RV/RS
222-1535	UV	UV curing cell for cone/plate measuring geometry for series 1, RSXXX and MARS (Peltier), without UV light source



High temperature sensor system

222-1669	UTC	Universal temperature control box UTC
222-1689	UTCE/P	Electrical temp. control unit UTCE/P for plate/cone (lower geometry), control box (222-1669) and MP are required
		Kegelheizung: siehe Zubehör HAAKE MARSA
222-1670		Air pressure switch (2 magnetic valves) for UTC-E for connection to the control box (222-1669)
222-1695		Set for water cooling for electrical temperature control unit UTC
222-1394	Ring	Protection ring out of glass, H=23mm (2pcs.)
222-1613	Ring	Protection ring out of glass, H=30mm (2pcs.)

Order No.	Type	Description
Measuring geometries: plate-cone and plate-plate up to 500°C		
222-1298	MP60	Measuring plate MP60, D=60mm for RSXXX and MARS
222-0602	C60/1H	Cone C60/1°H, D=60mm, with ceramic shaft for RV/RS
222-1264	C60/2H	Cone C60/2°H, D=60mm, with ceramic shaft for RV/RS
222-0603	C60/4H	Cone C60/4°H, D=60mm, with ceramic shaft for RV/RS
222-0597	PP60H	Plate PP60H, D=60mm, with ceramic shaft for RV/RS
222-1299	MP35	Measuring plate MP35, D=35mm for RSXXX and MARS
222-0601	C35/4H	Cone C35/4°H, D=35mm, with ceramic shaft for RV/RS
222-1262	C35/2H	Cone C35/2°H, D=35mm, with ceramic shaft for RV/RS
222-0600	C35/1H	Cone C35/1°H, D=35mm, with ceramic shaft for RV/RS
222-0596	PP35H	Plate PP35H, D=35mm, with ceramic shaft for RV/RS
222-1377	MP25	Measuring plate MPC25, D=25mm for RSXXX and MARS
222-1355	PP25H	Plate PP25H, D=25mm, with ceramic shaft for RV/RS
222-1300	MP20	Measuring plate MP20, D=20mm for RSXXX and MARS
222-0598	C20/1H	Cone C20/1°H, D=20mm, with ceramic shaft for RV/RS
222-1409	C20/1H TS	Cone C20/1°H TS, D=20mm, with ceramic shaft and thermo shield for RV/RS
222-0595	PP20H	Plate PP20H, D=20mm, with ceramic shaft for RV/RS
222-1408	PP20H TS	Plate PP20H TS, D=20mm, with ceramic shaft and thermo shield for RV/RS
222-1376	MP8	Measuring plate MP8, D=8mm for RSXXX and MARS
222-1356	PP8H	Plate PP8H, D=8mm, with ceramic shaft for RV/RS
222-1789		Ring rotor with 35 mm outer diameter with ceramic shaft for RV/RS



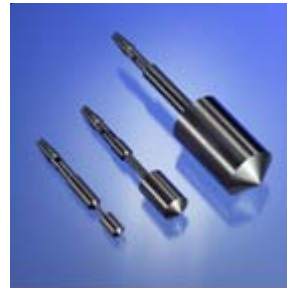
Measuring geometries: plate-plate (disposable)		
222-1375		Holder for disposable plate PP-E, with ceramic shaft for RV/RS
222-1295	PP20E	Disposable plate (upper geometry) PP20E (100pcs.) made of aluminium for RV/RS
222-1317	Holder MP20E	Holder for disposable measuring plate MP20E (lower measuring geometry) for RSXXX and MARS
222-1314	MP20E	Disposable measuring plate (lower measuring geometry) MP20-E (100pcs.) made of aluminium for RV/RS
222-1375		Holder for disposable plate PP-E, with ceramic shaft for RV/RS
222-1238	PP60E	Disposable plate (upper geometry) PP60-E (100pcs.) made of aluminium for RV/RS
222-1429	Holder MP60E	Holder for disposable measuring plate MP60-E for RSXXX and MARS
222-1234	MP60E	Disposable plate (lower geometry) MP60-E (100pcs.) made of aluminium for RV/RS



Liquid temperature controlled and electrical cylinder sensor systems		
222-1445	TEF/Z28	Temperature controlled cup holder TEF/Z28 up to 200°C for RSXXX and MARS
222-1431	TEF/Z48	Liquid temperature controlled cup holder TEF/Z48 up to 200°C for RSXXX
222-1526	TEE/Z48	Electric temperature controlled cup holder TEE/Z48 up to 200°C for RSXXX, control box (222-1366) required
222-1366	Contr.box	Temperature control box for TEE/P (222-1399) and TEE/C (222-1575) up to 500°C as well as TEE/Z48 (222-1526) for RSXXX and MARS
222-1315	MP100	Measuring plate cover MP100 (TEF/Z48 and TEE/Z48) for RSXXX(using without measuring plate cover)
333-0494		Temperature sensor for MP100
222-1524		Sample protection cover with nitrogen-inlet for cylinder measuring geometry for RSXXX
222-0610		Metal armored Viton hoses (2pcs.) up to 150°C with brass connections (2 pcs. 333-0302 req.)
333-0302		Adapter (brass) from R1/4" to M16x1
002-3443		Quick connector adapter, angled (2 pcs. required)
002-8020		Hose connector without valve



Order No.	Type	Description
Measuring geometries: cylinder to DIN53019/ISO3219 for TEF/Z48 or TEE/Z48		
222-1468	Z40DIN	Cup Z40 (TEF/Z48 and TEE/Z48) for RSXXX and MARS
222-1457	Z40DIN	Rotor Z40 DIN 53019/ISO 3219, low inertia for RV/RS
222-1290		Gasket for cup Z34/40/43, Viton (10 pcs.)
222-1699		Solvent trap for Z40 for RSXXX and MARS
222-1465	Z20DIN	Cup Z20 (TEF/Z48 and TEE/Z48) for RSXXX and MARS
222-1458	Z20DIN	Rotor Z20 DIN 53019/ISO 3219, low inertia for RV/RS
222-1291		Gasket for cup Z20, HS28 Viton (10pcs.)
222-1700		Solvent trap for Z10, Z20, Z41, DG41, DG43 for RSXXX and MARS
222-0620	Z10DIN	Cup Z10 (TEF/Z48 and TEE/Z48) for RSXXX and MARS
222-0621	Z10DIN	Rotor Z10 DIN 53019/ISO 3219, low inertia for RV/RS
222-1292		Gasket for cup Z10, Viton (10pcs.)
222-1700		Solvent trap for Z10, Z20, Z41, DG41, DG43 for RSXXX and MARS



Measuring geometries: cylinder to DIN53019/ISO3219 for TEF/Z28		
222-0635	Z20DIN	Cup Z20/D=28mm (TEF/Z28) for RSXXX and MARS
222-1458	Z20DIN	Rotor Z20 DIN 53019/ISO 3219, low inertia for RV/RS
222-1291		Gasket for cup Z20, HS28 Viton (10pcs.)
222-0634	Z10DIN	Cup Z10/D=28mm (TEF/Z28) for RSXXX and MARS
222-0621	Z10DIN	Rotor Z10 DIN 53019/ISO 3219, low inertia for RV/RS
222-1292		Gasket for cup Z10, Viton (10pcs.)



Measuring geometries: cylinder, double gap		
222-1466	DG41	Cup DG41 (double gap) (TEF/Z48 and TEE/Z48) for RSXXX and MARS
222-1463	DG41	Rotor DG41 DIN 53544, low inertia for RSXXX and MARS
222-1559	DG43	Rotor DG43 DIN 53544, low inertia for RV/RS
222-1560	DG41/H	Rotor DG41, low inertia, with helical groovings on its inner and outer side against sedimentation for RSXXX
222-1293		Gasket for cup DG41/DG43, Viton (10 pcs.)



Measuring geometries: cylinder to DIN 53019/ISO 3219 (disposable)		
222-0629	Z43DIN-E	Disposable cups Z43E/diameter 48mm (100pcs.) made of aluminium (TEF/Z48 and TEE/Z48) for RSXXX and MARS
222-1280	Z41DIN-E	Rotor Z41 DIN 53019/ISO 3219, low inertia for disposable measuring geometry for RSXXX and MARS
222-0631	Z25DIN-E	Disposable cups Z25E/diameter 28mm (100pcs.) made of aluminium (TEF/Z28) for RSXXX and MARS
222-1281	Z25DIN-E	Rotor Z25 DIN 53019/ISO 3219, low inertia, for disposable measuring geometry for RSXXX and MARS



Measuring geometries: cylinder		
222-1467	Z43	Cup Z43 for rotor Z31, Z38, Z41 (TEF/Z48 and TEE/Z48) for RSXXX and MARS
222-1459	Z41	Rotor Z41, low inertia for RV/RS
222-1460	Z38	Rotor Z38, low inertia for RV/RS
222-1461	Z31	Rotor Z31, low inertia for RV/RS
222-1290		Gasket for cup Z34/40/43, Viton (10 pcs.)
222-1464	Z43S	Cup Z43S, serrated (TEF/Z48 and TEE/F48) for RSXXX and MARS
222-1462	Z38S	Rotor Z38S, serrated for RV/RS

Order No.	Type	Description
-----------	------	-------------

Measuring systems: vane rotors

222-1468	Z40DIN	Cup Z40 (TEF/Z48 and TEE/Z48) for RSXXX and MARS
222-1290		Gasket for cup Z34/40/43, Viton (10 pcs.)
222-1276		Adapter coupling with bore 6mm for RV/RS
222-1324	FL40	Vane rotor FL40 (D=40mm) for RV/RS
222-1325	FL22	Vane rotor FL22 (D=22mm) for RV/RS
222-1326	FL16	Vane rotor FL16 (D=16mm) for RV/RS
222-1626	RPIN	Rotor with variable number of laterally mounted pins (adapter 222-1276 is req.)
222-1599	FL2B	Propeller shaped rotor with 2 blades for RV/RS, adapter is not necessary



Measuring systems: cylinder (high shear)

222-1445	TEF/Z28	Temperature controlled cup holder TEF/Z28 up to 200°C for RSXXX and MARS
222-1698	HS28-h	Cup HS hardened for TEF/Z28 (222-1445) for RSXXX and MARS
222-1291		Gasket for cup Z20, HS28 Viton (10pcs.)
222-1696	HS25K-h	Rotor HS25-K hardened, 25µm gap, with cardan joint for RV/RS
222-1697	HS100K-h	Rotor HS100-K hardened, 100µm gap, with cardan joint for RV/RS
222-1430	HS400K	Rotor HS400-K, 400µm gap, with cardan joint for RV/RS



Pressure sensor system D100/200 and accessories (accessory can also be used for D50/100, D150/300)

222-1405	D100/200	Pressure sensor cell D100/200 (up to 100bar and 200°C) for RSXXX and MARS incl. rupture disc (222-1401) and ball valve (222-1402) Cylinder sensor system for measurements under pressure up to 100 bar at temperatures of 200°C for temp. controlled cup holder TEF/Z48 or TEE/Z48 incl. valve, gauge and filling inlet, without P-rotor.
333-0514		Temperature sensor for pressure cell system up to 100bar
222-1306	P36	Rotor P36, D=36mm, L=93mm made of steel for pressure sensor system for RSXXX and MARS
222-1307	P38	Rotor P38, D=38mm, L=93mm made of steel for pressure sensor system for RSXXX and MARS
222-1308	P39	Rotor P39, D=39mm, L=93mm made of steel for pressure sensor system for RSXXX and MARS
222-1628		Vane rotor for pressure cell 25/8.8
222-1629		Vane rotor for pressure cell 30/8.8
222-1630		Vane rotor for pressure cell 36/8.8
222-1631		Vane rotor for pressure cell 25/93



Spares for pressure systems

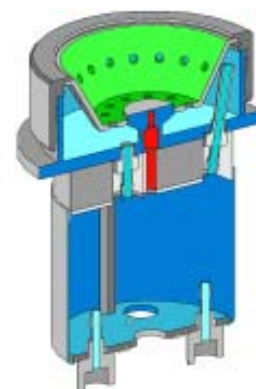
222-1402		Ball valve for D35/50/100
222-1565		Ball valve for D150/300
222-1335		Set of gaskets for pressure cell D35/50/100
222-1528		Set of gaskets for pressure cell D150/300
222-1336		Saphir bearing (plate and collar) for pressure cell D35/50/100
222-1401	D100	Rupture disc (spare part) for D100/200
222-1527	D150	Rupture disc (spare part) for D150/300

Order No.	Type	Description
Pressure sensor system D400/300 and accessories		
222-1706	D400/300	<p>Pressure sensor system D400/300 (up to 400bar and 300°C) for RSXXX and MARS</p> <p>Cylinder sensor system for measurements under pressure using a HAAKE rheometer (HAAKE MARS or HAAKE RheoStress XXX).</p> <p>Pressure-Temperature-Specification: Pressure: up to 200 bar Temperature: up to 300°C Without limits in measuring sample, security relevant accessory: rupture disk 200bar Pressure: up to 400 bar Temperature: up to 300°C</p> <p>Acc. to guidelines for pressure instruments (97/23/EG) only for fluids which not belong to group 1. Acc. to his guideline it is not allow to measure following samples: explosive, highly inflammable, inflammable, very toxic, toxic and oxidizing samples.</p> <p>Necessary accessory for temperature control: Temperature control unit TEF/Z48 (up to 200°C) Temperiere control unit TEE/Z48 (up to 300°C)</p> <p>Recommended accessory: Temperature sensor, ball valve, P-Rotor is not included.</p>
222-1710		Temperature sensor for pressure cell systems D400/300
222-1709	P38	Rotor P38, D=38mm made of titanium for pressure sensor system D400/300 for RSXXX and MARS
222-1708	P37	Rotor P37, D=37mm made of titanium for pressure sensor system D400/300 for RSXXX and MARS
222-1707	P35	Rotor P35, D=35mm made of titanium for pressure sensor system D400/300 for RSXXX and MARS
222-1713		Ball valve for D400/300
222-1712		Set of gaskets for pressure cell D400/300
222-1711		Rupture disc (spare part) for D400/300
222-1848		Hand pump (Enerpac P141 modified) incl. connectors to use with pressure measuring cells D100/200 or D400/300



Hastelloy-pressure sensor system and accessories		
222-1566	D70/300/H	Press. sensor syst. Hastelloy (up to 70bar and 300°C) for RSXXX and MARS incl.ball valve, press. gauge, rupture disc (spare part), gaskets
333-0726		Temperature sensor for pressure cell system up to 100bar (Hastelloy)
222-1590		Ball valve for D70/300, Hastelloy
222-1592		Set of 3 gaskets for pressure cell D70/300, Hastelloy (2x5 Kalrez)
222-1591		Jewel bearing (plate and collar) for D70/300, Hastelloy
222-1589		Rupture disc (spare part) forD100, Hastelloy
003-8383		Pressure gauge for D70, Hastelloy
222-1585	P36-H	Rotor D=36mm, L=93mm (D35/D50/D100), Hastelloy
222-1586	P38-H	Rotor D=38mm, L=93mm (D35/D50/D100), Hastelloy
222-1587	P39-H	Rotor D=39mm, L=93mm (D35/D50/D100), Hastelloy

Order No.	Type	Description
Sensors and accessories for electro-rheology		
222-0609	TEF/P	Liquid controlled base plate for cone/plate geometry up to 350°C for RSXXX and MARS, measuring plate (MP) and circulator required
222-1345	Z40ER	Rotor Z40ER, 2 measuring tubes for 0.5 and 1mm gap with bottom, for temperature control units with D=40mm for RSXXX and MARS
222-1346	Z20ER	Rotor Z20ER, 2 measuring tubes 0.5 and 1mm gap with bottom, for temperature control units with D=28mm for RSXXX and MARS
222-1353	PP60ER	Plate PP60ER, D=60mm, with insulated shaft
222-1352	PP35ER	Plate PP35ER, D=35mm, with insulated shaft
Measuring Cell for Construction Material		
222-1792		<p>Measuring cell for building materials for HAAKE rheometers (RSXXX, MARS) inkl. 2mm profile Consisting of holder and cup with interchangeable 2 mm profile out of stainless steel (1.4305).</p> <p>Inner diameter of the cup: 74 mm</p> <p>Necessary accessories: Measuring geometry 222-1796 Vane rotor R26mm for rough-grained material 222-1797 Vane rotor R29,5mm for construction material with medium size particles</p> <p>Adaptation (only for HAAKE MARS needed) 222-1801 Adapter for measuring cell for construction materials for HAAKE MARS</p> <p>Optional accessories: 222-1793 Set of 1mm profile (8 pcs.) 222-1794 Set of 0 mm profile (8 pcs.) 222-1795 Set of 2 mm profile (8pcs.)</p>
222-1796	R26	Vane Rotor R26 mm
222-1797	R29,5	Vane Rotor R29,5 mm
222-1798		Measuring cell cover for measuring cell for building materials 222-1792
222-1793	1 mm	Set of lamellas with profile depth 1 mm (8 pcs.)
222-1794	0 mm	Set of lamellas with profile depth 0 mm (8 pcs.)
222-1795	2 mm	Set of lamellas with profile depth 2 mm (8 pcs.)
SHRP bitumen sensor		
222-1360	SHRP	<p>Temperature controlled system bitumen SHRP for RSXXX and MARS Temperature control unit (liquid) for HAAKE rheometers, for plate / plate measurements acc. to SHRP</p> <p>Temperature range: -40°C up to 150°C</p> <p>with standard connectors with quick fit, circulator and hoses required.</p>
222-1355	PP25H	Plate PP25H, D=25mm, with ceramic shaft for RV/RS
222-1356	PP8H	Plate PP8H, D=8mm, with ceramic shaft for RV/RS
222-1372	Temp set	Test specimen with integrated temperature sensor and display
222-1371		SHRP bitumen sample preparation tool



Order No.	Type	Description
UV curing cell		
222-0609	TEF/P	Liquid controlled base plate for cone/plate geometry up to 350°C for RSXXX and MARS, measuring plate (MP) and circulator required
222-1536	UV	UV curing cell for cone/plate measuring geometry for RSXXX, without UV light source
222-1669	UTC	Universal temperature control box UTC
222-1668	UTCP/P	Peltier temperature control unit for cone/plate measuring geometry, -60 up to 200°C for RXXX and MARS (control box UTC is required)
222-1535	UV	UV curing cell for cone/plate measuring geometry for series 1, RSXXX and MARS (Peltier), without UV light source
222-1375		Holder for disposable plate PP-E, with ceramic shaft for RV/RS
222-1295	PP20E	Disposable plate (upper geometry) PP20E (100pcs.) made of aluminium for RV/RS



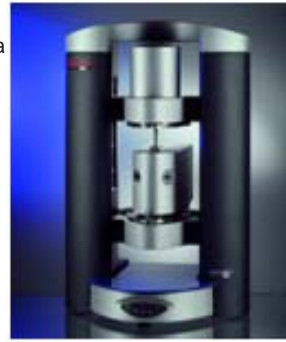





Accessories for HAAKE MARS

Order No.	Type	Description
HAAKE MARS		
222-1725		Adapter for using RSXXX-temperature control units for HAAKE MARS Holder for existing RS600/300 temperature control units, not necessary for UTCP/P (new)
222-1726		Set of cables to swap-out the lift electronic
222-1728		Mounting rods for HAAKE MARS
222-1722	USB-RS232	USB-RS232 Adapter
222-1760	USB-Ethernet	USB-Ethernet Adapter for HAAKE MARS
222-1322	Cable	RS232 cable (9PIN female - 25PIN male)
High temperature sensor system		
222-1790	UTCE/C	Electric cone heating system UTCE/C for HAAKE MARS, control box (222-1669) required
Measuring Cell for Construction Material		
222-1799		Liquid temperature control unit for measuring cell for construction material for HAAKE MARS
222-1800		Temperature sensor with swing mechanism for HAAKE MARS
222-1801		HAAKE MARS adapter plate for cell for construction materials, necessary accessory for the adaptation of the temperature control unit (222-1799)
Electro-rheology		
222-1764	ER	ER adapter device for AC/DC high voltage for HAAKE MARS, up to 10 kV Adapter for high voltage transmission to ER rotors for HAAKE rheometers
222-1859		Safety Device HAAKE MARS for ER application



Order No.	Type	Description
Controlled Test Chamber (CTC) for HAAKE MARS		
222-1729	CTC	<p>Controlled Test Chamber (CTC), 30 up to 600°C Test chamber consisting of two active chamber halves for a homogeneous temperature distribution and measurements in a wide temperature range: 30 up to 600°C, can be extended down to -150°C with "Low temperature" options.</p> <p>Key features: Two movable chamber halves (mounting rods: 222-1728 required) Parking position for easy exchange of temperature control units and measuring geometries as well as for pre-heating and -cooling during sample loading and trimming Tool with defined angle-positions with 45°-steps for turning the lower holder for exchangeable measuring geometries for optimum observation of the sample Two observation windows for observation of the sample during measurement Controlled heating and cooling using a combination of convection and radiation for maximum heating and cooling rates as well as minimum temperature gradient within the sample Controller box for temperature chamber and evaporation unit</p> <p>Recommended accessory: safety gloves for higher or lower temperatures</p>
222-1768		<p>Transformer for CTC Transformer necessary accessory for temperature control chamber CTC, if input voltage is not 230V.</p> <p>Frequency range: 50-60Hz Input voltage: 115V, 125V, 230V, 240V (+/- 10%) Output voltage: 230V (or 115V, 125V, 240V)</p>
222-1728		Mounting rods for HAAKE MARS
222-1730	Low Temp	<p>Option "Low temperature", premium version with optimized energy consumption, down to -150°C for CTC</p> <p>Optional extension of the standard temperature range of the Controlled Test Chamber. For measurements down to -150°C using liquid nitrogen.</p> <p>Consisting of: Unit for evaporation of liquid nitrogen within an available Dewar-vessel (standard-Dewar with opening diameter 50mm) Unique, double-walled vacuum connection unit for prevention of condensation enables an easy movement of the chamber halves over the whole temperature range</p> <p>Recommended accessory: safety gloves for low temperatures</p>
222-1733		<p>Dewar vessel (50l) Double-walled vacuum vessel for storing liquid nitrogen with 50 litres volume and standard opening 50mm</p>



Order No.	Type	Description	
Accessories for CTC			
222-1734	Solid	Solid clamps incl. temperature sensor Unique clamp set for solids with self-centering and wire strainer consisting of upper and lower clamp. With defined angle-positions with 45° steps for turning the lower holder. Incl. adjustable temperature sensor for temperature measurements closed to the sample. For measurements according to DIN / ISO 6721-1.	
222-1781		Clamp jaws for soft samples	
222-1782		Clamp jaws for medium samples (spare part for solids clamps)	
222-1783		Clamp jaws for hard samples	
222-1735		Lower holder for exchangeable measuring geometries incl. temperature sensor for MARS	
222-1769		Temperature sensor for lower shaft (CTC)	
222-1747		Upper holder for exchangeable measuring geometries for MARS and RV/RS	
222-1736	PP35 Ex	Plate PP35 (exchangeable geometry), as lower or upper geometry, for MARS and RV/RS, holder required	
222-1737	PP35 Ex	Lower Plate PP35 (exchangeable geometry) for MARS and RV/RS, holder required	
222-1738	C35/4 Ex	Cone C35/4° (exchangeable geometry) for MARS and RV/RS, holder required	
222-1739	C35/1 Ex	Cone C35/1° (exchangeable geometry) for MARS and RV/RS, holder required	
222-1740	PP20 Ex	Lower Plate PP20 (exchangeable geometry) for MARS, holder required	
222-1741	PP20 Ex	Upper Plate PP20 (exchangeable geometry) for MARS and RV/RS, holder required	
222-1742	C20/1 Ex	Cone C20/1° (exchangeable geometry) for MARS and RV/RS, holder required	
222-1743	PP25 Ex	Lower Plate PP25 (exchangeable geometry) for MARS, holder required	
222-1744	PP25 Ex	Upper Plate PP25 (exchangeable geometry) for MARS and RV/RS, holder required	
222-1745	PP8 Ex	Lower Plate PP8 (exchangeable geometry) for MARS, holder required	
222-1746	PP8 Ex	Upper Plate PP8 (exchangeable geometry) for MARS and RV/RS, holder required	
222-1749	PP20 Ex Alu	Plate PP20 (exchangeable geometry out of aluminum), as lower and upper geometry, for MARS (40pcs.= 20 sets), holder required, collection device (222-1778) recom.	
222-1778		Collection device for PP20 exchangeable geometry	
222-1750	PP25 Ex Alu	Plate PP25 (exchangeable geometry out of aluminum), as lower and upper geometry, for MARS (40pcs. = 20 sets), holder required, collection device (222-1779) recom.	
222-1779		Collection device for PP25 exchangeable geometry	
222-1808		Disposable plate/plate-measuring geometry consisting of a lower and an uppershaft, incl. press tool for mounting the disposable plates on the shafts and removal tool to remove the disposable plates from the shaft	
222-1769	PP20E	Temperature sensor for lower shaft (CTC)	
222-1295	PP35E	Disposable plate (upper geometry) PP20E (100pcs.) made of aluminium for RV/RS	
603-0021		Disposable plate (upper geometry) PP35-E (100pcs.) made of aluminium for RV/RS	
603-0247		SER Tool for HAAKE MARS (CTC)	

Order No.	Type	Description
RheoScope Module for HAAKE MARS		
222-1834		RheoScope module for HAAKE MARS: temperature range -5 °C to 120 °C (300 °C with high temperature option) consisting of liquid temperature control unit (-5 up to 120 °C) incl. heating elements for high temperature extension, cold light source, polarizer, camera and HAAKE RheoWin module Necessary accessories: lens, measuring plate (MP) for RheoScope module and measuring geometry (computer with firewire interface necessary) Necessary accessories for high temperature extension: UTC box generation II, set of cables, valves for cooling using water or air and necessary hoses
222-1811	MP60 RO	Measuring plate MP60 glass 2 mm (sand blasted), D=60mm for RheoScope module
222-1812	MP60 RO	Measuring plate MP60 glass 2 mm (transparent), D=60mm for RheoScope module
222-1813		Exchange kit glass plates 2 mm (sand blasted) for RheoScope module (5 pcs.)
222-1814		Exchange kit glass plates 2 mm (transparent) for RheoScope module (5 pcs.)
222-1830	MP60 RO	Measuring plate MP60 glass 1 mm (sand blasted), D=60mm for RheoScope module
222-1831	MP60 RO	Measuring plate MP60 glass 1 mm (transparent), D=60mm for RheoScope module
222-1832		Exchange kit glass plates 1 mm (sand blasted) for RheoScope module (5 pcs.)
222-1833		Exchange kit glass plates 1 mm (transparent) for RheoScope module (5 pcs.)
222-1815	Lens5x	Lens with 5fold magnification for RheoScope module (Olympus), 2 mm glass plates req.
222-1816	Lens10x	Lens with 10fold magnification for RheoScope module (Olympus), 2 mm glass plates req.
222-1817	Lens20x	Lens with 20fold magnification for RheoScope module (Nacht), 2 mm glass plates req.
222-1818	Lens50x	Lens with 50fold magnification for RheoScope module (Olympus), 1 mm glass plate req.
222-1603	C60/1P	Cone C60/1°, D=60mm, low inertia, polished
222-1605	PP60P	Plate PP60, D=60mm, low inertia, polished
222-1576	C35/1P	Cone C35/1°, D=35mm, low inertia, polished
222-1604	PP35P	Plate PP35, D=35mm, low inertia, polished
222-0602	C60/1H	Cone C60/1°H, D=60mm, with ceramic shaft for RV/RS
222-0597	PP60H	Plate PP60H, D=60mm, with ceramic shaft for RV/RS
222-0600	C35/1H	Cone C35/1°H, D=35mm, with ceramic shaft for RV/RS
222-0596	PP35H	Plate PP35H, D=35mm, with ceramic shaft for RV/RS
222-1355	PP25H	Plate PP25H, D=25mm, with ceramic shaft for RV/RS
222-0598	C20/1H	Cone C20/1°H, D=20mm, with ceramic shaft for RV/RS
222-0595	PP20H	Plate PP20H, D=20mm, with ceramic shaft for RV/RS
222-1597		Box with cleaning tissues (280pcs.)
222-1821		Fire wire interface (necessary accessory for RheoScope module)
222-1836		UTC controller box Generation II to control the Peltier temperature control unit UTCP/P, the electrical temperature control units UTCE/P and UTCE/C as well as the RheoScope module (high temperature version)
222-1790		Electric cone heating system UTCE/C for HAAKE MARS, control box (222-1669) required
222-1837		Set of cables for RheoScope module HT, to connect the RheoScope module with the UTC controller box generation II
222-1838		Set of valves for RheoScope module HT for cooling medium water or air, incl. connectors, necessary accessory: set of cables for water or air cooling
222-1842		Set of hoses for "air cooling" for RheoScope module HT
222-1843		Set of hoses for "water cooling" for RheoScope module HT
222-1822		Upgrade kit for HAAKE MARS (Year of manufacturing 2005 / 2006) in order to use the HAAKE MARS with RheoScope module
098-5052		Image Analysis Software SPIP consting of base module with roughness and grain analysis
222-1835		Tool for checking the optical quality of the RheoScope module



Accessories for HAAKE RheoStress 6000



Order No.	Type	Description
HAAKE RheoStress 6000		

222-1472 Display and control unit



High temperature sensor system		
--------------------------------	--	--

222-1690 UTCE/C Electric cone heating system UTCE/C for RS600/300, control box (222-1669) required

Electro-rheology		
------------------	--	--

222-1331 ER ER adapter device for AC/DC high voltage for RSXXX, up to 10 kV

Adapter for high voltage transmission to ER rotors for Haake rheometers



Specials (BAs)

Delivery time on request

Please contact the product manager

Order No.	Type	Description
UTCP/P measuring geometries: plate-cone and plate-plate		
603-0030	MPC25	Measuring plate cover MPC25, D=25mm for series 1, RSXXX and MARS (Peltier)
603-0006	PP25 Ti	Plate PP25, D=25mm, low inertia for RV/RS
603-0005	C25/2° Ti	Cone C25/2°, D=25mm, low inertia for RV/RS
603-0013	C25/1° Ti	Cone C25/1°, D=25mm, low inertia for RV/RS
603-0132	MPC40	Measuring plate cover MPC40, D=40mm for series 1, RSXXX and MARS (Peltier)
603-0002	PP40Ti	Plate PP40, D=40mm, low inertia for RV/RS
603-0024	C40/2° Ti	Cone C40/2°, D=40mm, low inertia for RV/RS
603-0143	C40/0.5°Ti	Cone C40/0.5°, D=40mm, low inertia for RV/RS
603-0039	MPC50	Measuring plate cover MPC50, D=50mm for series 1, RSXXX and MARS (Peltier)
603-0040	PP50 Ti	Plate PP50, D=50mm, low inertia for RV/RS
603-0101	C50/4° Ti	Cone C50/4°, D=50mm, low inertia for RV/RS
603-0144	C50/2°Ti	Cone C50/2°, D=50mm, low inertia for RV/RS
Measuring geometries: plate-cone and plate-plate up to 500°C		
603-0014	C25/1 H	Cone C25/1°H, D=25mm, with ceramic shaft for RV/RS
Measuring geometries: plate-plate (disposable)		
603-0021	PP35E	Disposable plate (upper geometry) PP35-E (100pcs.) made of aluminium for RV/RS
Others		
603-0283		Holder and liquid temperature control unit for micro titer plates for HAAKE MARS
603-0304		Universal holder for original containers for HAAKE MARS and RSXXX
603-0315		UV measuring cell for CTC (HAAKE MARS)
603-0347		Tribology Cell
603-0360		Submersion flow cell
603-0408		DuNoüy ring incl. adapter to use with HAAKE MARS, RSXXX

Thermo Fisher Scientific
Dieselstraße 4
D-76227 Karlsruhe
Tel.: +49-721-4094-444
Fax: +49-721-4094-390
e-mail: info.ctd.de@thermofisher.com

Artisan Technology Group is an independent supplier of quality pre-owned equipment

Gold-standard solutions

Extend the life of your critical industrial, commercial, and military systems with our superior service and support.

We buy equipment

Planning to upgrade your current equipment? Have surplus equipment taking up shelf space? We'll give it a new home.

Learn more!

Visit us at [artisan^{tg}.com](https://www.artisantg.com) for more info on price quotes, drivers, technical specifications, manuals, and documentation.

Artisan Scientific Corporation dba Artisan Technology Group is not an affiliate, representative, or authorized distributor for any manufacturer listed herein.

We're here to make your life easier. How can we help you today?

(217) 352-9330 | sales@artisan^{tg}.com | [artisan^{tg}.com](https://www.artisantg.com)

