



## Artisan Technology Group is your source for quality new and certified-used/pre-owned equipment

- FAST SHIPPING AND DELIVERY
- TENS OF THOUSANDS OF IN-STOCK ITEMS
- EQUIPMENT DEMOS
- HUNDREDS OF MANUFACTURERS SUPPORTED
- LEASING/MONTHLY RENTALS
- ITAR CERTIFIED SECURE ASSET SOLUTIONS

### SERVICE CENTER REPAIRS

Experienced engineers and technicians on staff at our full-service, in-house repair center

### *InstraView*<sup>SM</sup> REMOTE INSPECTION

Remotely inspect equipment before purchasing with our interactive website at [www.instraview.com](http://www.instraview.com) ↗

### WE BUY USED EQUIPMENT

Sell your excess, underutilized, and idle used equipment. We also offer credit for buy-backs and trade-ins. [www.artisanng.com/WeBuyEquipment](http://www.artisanng.com/WeBuyEquipment) ↗

### LOOKING FOR MORE INFORMATION?

Visit us on the web at [www.artisanng.com](http://www.artisanng.com) ↗ for more information on price quotations, drivers, technical specifications, manuals, and documentation

**Contact us:** (888) 88-SOURCE | [sales@artisanng.com](mailto:sales@artisanng.com) | [www.artisanng.com](http://www.artisanng.com)

# Model 500V

## VME Programmable PCM/PAM Simulator

**Generates complex  
formats with dynamic  
varying data and  
subframe capability**

**Performs asynchronous  
frame insertion and  
format switching**

**Eight dynamic and 1024  
static data sources**

**Tunable from 1 to 25Mbps**

**Programmable 1 to 32 bit  
word length**

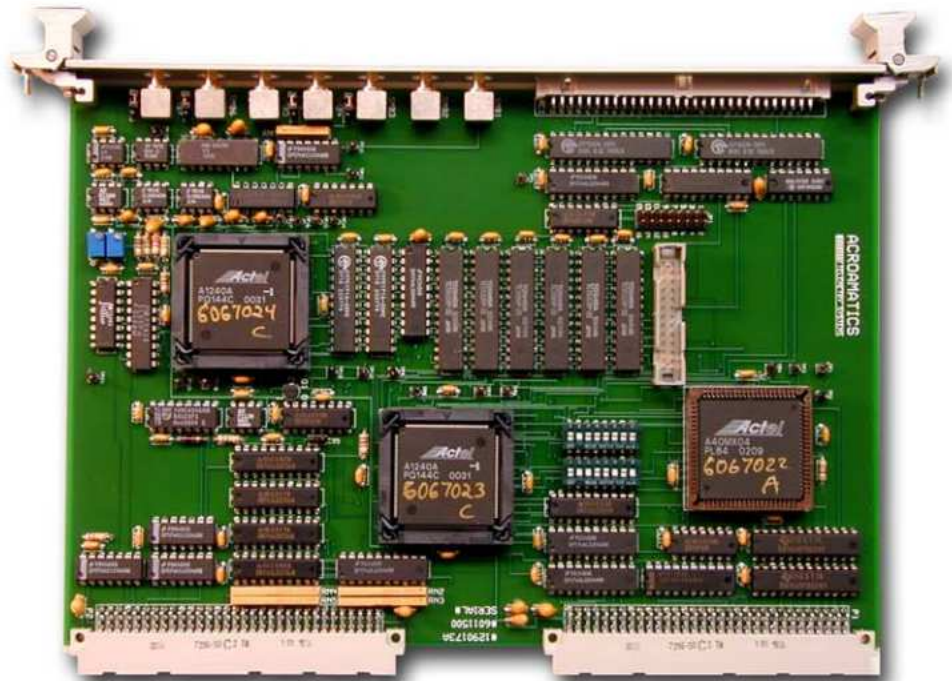
**Programmable MSB/LSB  
word orientation**

**Selectable parity  
generation**

**Generates all IRIG  
standard and ramomized  
PCM codes**

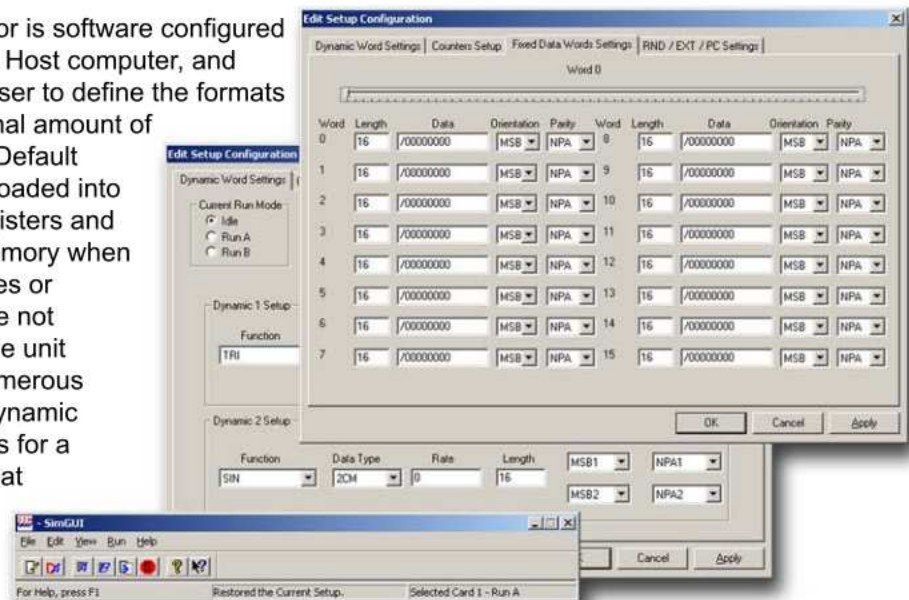
**An onboard  
analog-to-digital  
converter generates  
simulated PAM signals**

**Standalone, VME  
compatible 6U card**



The Model 500V PCM/PAM Format Simulator is a stand-alone, VME compatible, 6U board that simulates PCM and PAM telemetry data streams. The simulator can generate complex PCM/PAM formats, which contain dynamically varying data, as well as multiple subframe structures.

The simulator is software configured from a VME Host computer, and allows the user to define the formats with a minimal amount of description. Default entries are loaded into the data registers and program memory when certain values or functions are not specified. The unit provides numerous static and dynamic data sources for a flexible format generation.



# ACROAMATICS

## TELEMETRY SYSTEMS

5385 HOLLISTER AVE. BLDG.5 SANTA BARBARA CALIFORNIA 93111-2365  
805-967-9909 [www.acroamatics.com](http://www.acroamatics.com)

# Model 500V VME Programmable PCM/PAM Format Simulator

## FUNCTION

Bit Rate	1Hz to 25MHz, Tunable to 0.1% of programmed rate
Data Sources	1024 Static Registers Two User-Defined Dynamic Data Memories Two 16-bit Modulo Up/Down Counters Two 16-bit External Inputs 16-bit Pseudo-Random Generator 16-bit Program Counter
Word Lengths	Programmable for each data source Static data words range from 1 to 32 bits All other data sources range from 1 to 16 bits
Word Orientation	Programmable MSB/LSB for each data word
Parity Generation	Selectable odd/even, leading, trailing or no parity for each data word
Dynamic Data Memory	2K RAM, Presetable to ramp, sine, triangle or square wave functions, or user-defined input. Selectable data type: 1's Comp., 2's Comp., Sign Mag. and Off. Binary. Programmable time base.

## CAPABILITY

Format Storage	Stores two complete, selectable PCM formats Performs asynchronous frame insertion and format switching
Subframe Capability	Generates up to three subframes within the mainframe Subframe can be generated within a subframe
Frame Length	Maximum of 4096 words for each mainframe and subframe

## OUTPUT

Clock	0° Clock, TTL Compatible Two outputs are available from front panel
Data	Six outputs are available from P2 Connector NRZ-L Data, TTL Compatible Two outputs are available from front panel
PAM Output	Six outputs are available from P2 Connector ±2.5 Volts balanced output, 10mA drive current
PCM Output	±2 Volts balanced output, 40mA drive current Two outputs are available from front panel Four outputs are available from P2 Connector
Output Code Type	Sixteen selectable output codes: NRZ-L/M/S, Bi $\phi$ -L/M/S, DBi $\phi$ -M/S, DM-M/S, MDM-M/S, RNRZ 11, 15, 17 and 23

## PHYSICAL

Format	Single slot 6U VME
Power Requirements	+5VDC at 1 Amp, +12VDC at 300 mA, -12VDC at 100 mA
Cooling Requirements	30 Linear FPM
Temperature	Operating: 0° to +40° C, Non-Operating: -40° to +86° C
Relative Humidity	Up to 90% non-condensing
Shock	Operating: 6G, Non-Operating: 50G
Vibration	Operating: 0.5G, 5 to 2000Hz, Non-Operating: 1.2G, 5 to 500Hz

*Specifications subject to change without notice*



## Artisan Technology Group is your source for quality new and certified-used/pre-owned equipment

- FAST SHIPPING AND DELIVERY
- TENS OF THOUSANDS OF IN-STOCK ITEMS
- EQUIPMENT DEMOS
- HUNDREDS OF MANUFACTURERS SUPPORTED
- LEASING/MONTHLY RENTALS
- ITAR CERTIFIED SECURE ASSET SOLUTIONS

### SERVICE CENTER REPAIRS

Experienced engineers and technicians on staff at our full-service, in-house repair center

### *InstraView*<sup>SM</sup> REMOTE INSPECTION

Remotely inspect equipment before purchasing with our interactive website at [www.instraview.com](http://www.instraview.com) ↗

### WE BUY USED EQUIPMENT

Sell your excess, underutilized, and idle used equipment. We also offer credit for buy-backs and trade-ins. [www.artisanng.com/WeBuyEquipment](http://www.artisanng.com/WeBuyEquipment) ↗

### LOOKING FOR MORE INFORMATION?

Visit us on the web at [www.artisanng.com](http://www.artisanng.com) ↗ for more information on price quotations, drivers, technical specifications, manuals, and documentation

**Contact us:** (888) 88-SOURCE | [sales@artisanng.com](mailto:sales@artisanng.com) | [www.artisanng.com](http://www.artisanng.com)