



Artisan Technology Group is your source for quality new and certified-used/pre-owned equipment

- FAST SHIPPING AND DELIVERY
- TENS OF THOUSANDS OF IN-STOCK ITEMS
- EQUIPMENT DEMOS
- HUNDREDS OF MANUFACTURERS SUPPORTED
- LEASING/MONTHLY RENTALS
- ITAR CERTIFIED SECURE ASSET SOLUTIONS

SERVICE CENTER REPAIRS

Experienced engineers and technicians on staff at our full-service, in-house repair center

*InstraView*SM REMOTE INSPECTION

Remotely inspect equipment before purchasing with our interactive website at www.instraview.com ↗

WE BUY USED EQUIPMENT

Sell your excess, underutilized, and idle used equipment. We also offer credit for buy-backs and trade-ins. www.artisanng.com/WeBuyEquipment ↗

LOOKING FOR MORE INFORMATION?

Visit us on the web at www.artisanng.com ↗ for more information on price quotations, drivers, technical specifications, manuals, and documentation

Contact us: (888) 88-SOURCE | sales@artisanng.com | www.artisanng.com

PXI Modules

3010/3011 PXI RF Synthesized Signal Generator



Low noise RF signal synthesis with 1 Hz resolution

- Frequency range 1.5 GHz to 3.0 GHz
- Resolution 1 Hz
- Phase noise typically -116 dBc/Hz at 20 kHz Offset
- Frequency agile, typically 250 μ s settling time with Option 01 fitted
- Internal or external reference frequency
- High stability variant with OCXO reference

Introduction

The 3010/3011 RF synthesized signal generator PXI modular instruments are high performance fixed output level frequency synthesizer instruments covering the range 1.5 GHz to 3.0 GHz. Using Aeroflex patented technology, these instruments provide 1 Hz frequency resolution combined with excellent phase noise performance and frequency agility all in a single width 3U PXI form factor.

Applications

The 3010 and 3011 can be used as a stand alone CW signal generator, or as the LO input to the 3020 series digital RF signal generator or 3030 Series RF digitizer.

Used with the 3020 series, the 3010 completes an IQ modulated signal source with a frequency range up to 6 GHz.

Used with the 3030 Series, the 3010 completes an RF digitizer for analysis of signals up to 6 GHz.

Performance Highlights

Low Phase Noise: The 3010's phase noise of typically -116 dBc/Hz at 20 kHz offset makes it ideal for use in radio communications test applications. Phase noise can be optimized for close to carrier performance or for performance in the offset region 5 kHz to 100 kHz.

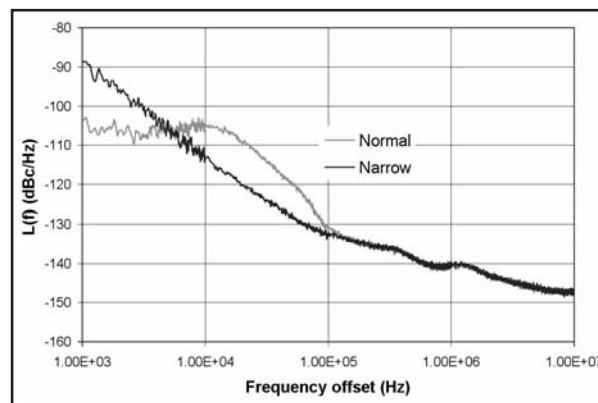


Figure 1. Typical Phase Noise profile at 2 GHz

Frequency Agility: Frequency settling times of typically 250 μ s can be achieved with option 01 making the 3010 suitable for use in high volume RF component test systems or in testing of frequency hopping radios. As standard, 3010 provides frequency switching times of typically 1.1 ms (loop bandwidth set to normal).

For the very latest specifications visit www.aeroflex.com

Artisan Technology Group - Quality Instrumentation ... Guaranteed | (888) 88-SOURCE | www.artisanng.com

High Stability Frequency Reference Variant: The 3010 RF synthesizer is supplied for use with either an internal VCXO frequency standard or an external 10 MHz frequency reference. The high stability variant, 3011 is fitted with an OCXO 10 MHz frequency reference. In this case it is also available as an output for connection to other PXI modular instruments such as 3020 and 3030.

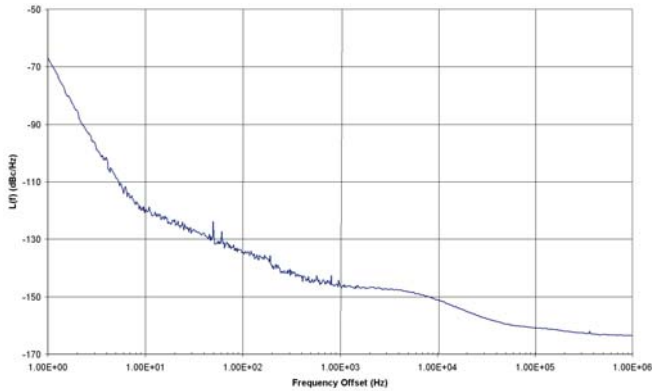
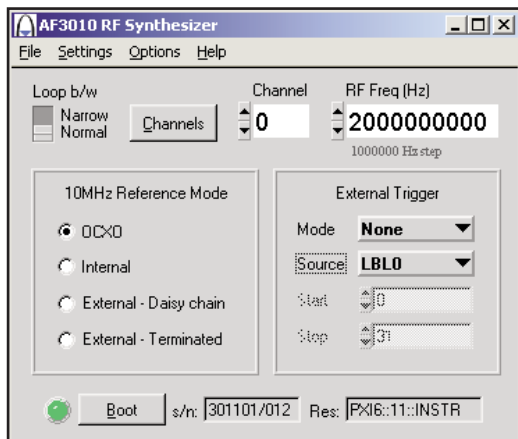


Figure 2. Typical 10 MHz reference phase noise profile

Software

The 3010 and 3011 are supplied with a VXI PNP Driver and soft front panel.



Customer Support.

Users can elect to purchase PXI modular instrument with optional warranty extensions.

Standard Extended Warranty provides either 36 months or 60 months warranty period plus the benefits of guaranteed product repair times in the event of failure.

Standard Extended Warranty can also be provided inclusive of scheduled calibration.

On request Aeroflex can provide customized Premium Warranty support designed around your specific needs.

SPECIFICATION

All specifications are common to 3010 and 3011 unless otherwise stated

RF OUTPUT

Frequency Range

1.5 GHz to 3.0 GHz

Resolution

1 Hz

Accuracy

As frequency standard

Output Power

Fixed level in the range -4 dBm to +3 dBm

Output Impedance

50 Ω Nominal

VSWR

<2:1

SPECTRAL PURITY

Phase Noise

(typical at 2 GHz and at ambient room temperature)

| Loop Bandwidth | Narrow | Wide (normal) |
|----------------|--------|---------------|
| Offset | dBc/Hz | dBc/Hz |
| 100 Hz | -55 | -85 |
| 1 kHz | -85 | -103 |
| 10 kHz | -114 | -103 |
| 20 kHz | -116 | -110 |
| 100 kHz | -133 | -130 |
| 1 MHz | -140 | -140 |
| 10 MHz | -146 | -146 |

Phase noise below 100 Hz is dependent upon reference phase noise.

FREQUENCY SETTLING TIME

Time taken to be within 1 kHz of final demanded frequency

Normal Loop Bandwidth

As standard: Typically 1.1 ms

With option 01 fitted: Typically 250 μ s

Narrow Loop Bandwidth

Typically <10 ms

RF LEAKAGE

<5 μ V PD at the carrier frequency into a single turn 25 mm loop, 25 mm or more from the front panel

GENERAL

Standard Warranty

24 months

Calibration Interval

Recommended 24 months

Power Consumption (typical)

| | |
|--------|--|
| +3.3 V | 50 mA (250 mA transiently during power up) |
| +5 V | 650 mA |
| +12 V | 50 mA* |
| -12 V | 30 mA |

* 3011 OCXO requires 300 mA startup reducing to 150 mA after 5 minutes

Electromagnetic Compatibility

EN 61326-1:1997, Emissions Class A, Immunity Table 1 – Performance Criteria B

Safety

EN 61010-1:2001 Safety requirements for electrical equipment for measurement, control and laboratory use-Part 1, General requirements

Driver Software

VXIpnp compliant software driver

System Requirements

The recommended minimum system requirements are:

Intel Pentium IV – 1.3 GHz or better

512 MB RAM (for 8-slot chassis - larger PXI chassis may require more memory to be fitted)

200 MB free disk space

1024 x 768 display resolution

CD-ROM drive, network access, or USB memory stick for software installation

Microsoft Windows XP Professional with Service Pack 2

Microsoft Windows 7

NI-VISA - 3.1.0 or later

INTERNAL FREQUENCY REFERENCE

Output (3011 only)

2 V pk-pk nominal square wave into 50 ohms

Frequency

10 MHz

Aging Rate

3010: Unspecified

3011: 1 in 10⁹ per day 1 in 10⁷ per year

Temperature Stability (0 to 50°C)

3011: Typically better than $\pm 1 \times 10^{-8}$

Warm-Up Time

3010, N/A

3011, <5 Minutes

EXTERNAL FREQUENCY REFERENCE

Input

0.4 V to 4 V pk-pk into 50 ohms or looped through

Frequency

10 MHz \pm 100 Hz

Phase Noise Minimum Requirements*

Nominal phase noise requirements to meet typical LO out phase noise specification

| | Narrow mode | Wide mode |
|--------|-------------|-----------|
| 100 Hz | -103 | -133 |
| 1 kHz | -124 | -138 |
| 10 kHz | -128 | -123 |

* The synthesiser will still function if these values are exceeded but the output phase noise could be degraded

INTERFACES

RF output (SMA), 10 MHz reference I/O (SMA x 2), PCI bus interface including PXI triggering functions

DIMENSIONS AND WEIGHT

Dimensions

Single width 3U PXI modular instrument

Weight

3010, 375 g

3011, 390 g

RATED RANGE OF USE

Operating Temperature

0 to 50°C. Meets IEC-60068-2-1 and 60068-2-2

Operating Humidity

10 to 90% non-condensing. Meets IEC-60068-2-56

CONDITIONS OF STORAGE AND TRANSPORT

Storage Temperature

-20 to +70°C. Meets IEC-60068-2-1 and 60068-2-2

Storage Humidity

5 to 93% non-condensing. Meets IEC-60068-2-56

Shock

30 g peak, half sine, 9 ms pulse. Tested in accordance with IEC-60068-2-27

Random vibration 5 Hz to 500 Hz, 2.46 g rms non-operating. Tested in accordance with IEC-60068-2-64

COMPLIANCE

PXI Specification, Revision 2.2

VXIplug&play Specifications (VPP-2, VPP-3.x, VPP-4.x and VPP-7)

VERSIONS, OPTIONS AND ACCESSORIES

When ordering please quote the full ordering number information.

Ordering Numbers

Versions

- 3010 PXI RF Synthesized Signal Generator
3011 PXI RF Synthesized Signal Generator (including OCXO high stability 10 MHz reference)

Supplied with

CDROM containing VXI PNP driver, soft front panel and user documentation (46886/028)

2 x SMA link cable (43139/738)

Options

- 3010 Opt 01 High speed frequency switching

Service Options

Service options are common to 3010 and 3011

- W3010/103 Standard Extended Warranty 36 months
W3010/103C Standard Extended Warranty 36 months with scheduled calibration
W3010/105 Standard Extended Warranty 60 months
W3010/105C Standard Extended Warranty 60 months with scheduled calibration

Accessories

- 43139/738 SMA link cable (130 mm)
46885/224 SMA connector saver

CHINA Beijing

Tel: [+86] (10) 6539 1166
Fax: [+86] (10) 6539 1778

CHINA Shanghai

Tel: [+86] 21 2028 3588
Fax: [+86] 21 2028 3558

CHINA Shenzhen

Tel: [+86] (755) 3301 9358
Fax: [+86] (755) 3301 9356

FRANCE

Tel: [+33] 1 60 79 96 00
Fax: [+33] 1 60 77 69 22

GERMANY

Tel: [+49] 89 99641 0
Fax: [+49] 89 99641 160

HONG KONG

Tel: [+852] 2832 7988
Fax: [+852] 2834 5364

INDIA

Tel: [+91] 80 [4] 115 4501
Fax: [+91] 80 [4] 115 4502

JAPAN

Tel: [+81] (3) 3500 5591
Fax: [+81] (3) 3500 5592

KOREA

Tel: [+82] (2) 3424 2719
Fax: [+82] (2) 3424 8620

SCANDINAVIA

Tel: [+45] 9614 0045
Fax: [+45] 9614 0047

SINGAPORE

Tel: [+65] 6873 0991
Fax: [+65] 6873 0992

TAIWAN

Tel: [+886] 2 2698 8058
Fax: [+886] 2 2698 8050

UK Stevenage

Tel: [+44] (0) 1438 742200
Fax: [+44] (0) 1438 727601
Freephone: 0800 282388

USA

Tel: [+1] (316) 522 4981
Fax: [+1] (316) 522 1360
Toll Free: 800 835 2352

As we are always seeking to improve our products, the information in this document gives only a general indication of the product capacity, performance and suitability, none of which shall form part of any contract. We reserve the right to make design changes without notice. All trademarks are acknowledged. Parent company Aeroflex, Inc. ©Aeroflex 2012.

www.aeroflex.com
info-test@eroflex.com



Our passion for performance is defined by three attributes represented by these three icons: solution-minded, performance-driven and customer-focused.

Part No. 46891/144 Issue 13, 12/12



Artisan Technology Group is your source for quality new and certified-used/pre-owned equipment

- FAST SHIPPING AND DELIVERY
- TENS OF THOUSANDS OF IN-STOCK ITEMS
- EQUIPMENT DEMOS
- HUNDREDS OF MANUFACTURERS SUPPORTED
- LEASING/MONTHLY RENTALS
- ITAR CERTIFIED SECURE ASSET SOLUTIONS

SERVICE CENTER REPAIRS

Experienced engineers and technicians on staff at our full-service, in-house repair center

*InstraView*SM REMOTE INSPECTION

Remotely inspect equipment before purchasing with our interactive website at www.instraview.com ↗

WE BUY USED EQUIPMENT

Sell your excess, underutilized, and idle used equipment. We also offer credit for buy-backs and trade-ins. www.artisanng.com/WeBuyEquipment ↗

LOOKING FOR MORE INFORMATION?

Visit us on the web at www.artisanng.com ↗ for more information on price quotations, drivers, technical specifications, manuals, and documentation

Contact us: (888) 88-SOURCE | sales@artisanng.com | www.artisanng.com