



Artisan Technology Group is your source for quality new and certified-used/pre-owned equipment

- FAST SHIPPING AND DELIVERY
- TENS OF THOUSANDS OF IN-STOCK ITEMS
- EQUIPMENT DEMOS
- HUNDREDS OF MANUFACTURERS SUPPORTED
- LEASING/MONTHLY RENTALS
- ITAR CERTIFIED SECURE ASSET SOLUTIONS

SERVICE CENTER REPAIRS

Experienced engineers and technicians on staff at our full-service, in-house repair center

*InstraView*SM REMOTE INSPECTION

Remotely inspect equipment before purchasing with our interactive website at www.instraview.com ↗

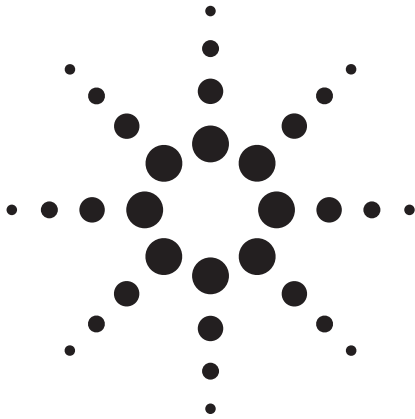
WE BUY USED EQUIPMENT

Sell your excess, underutilized, and idle used equipment. We also offer credit for buy-backs and trade-ins. www.artisanng.com/WeBuyEquipment ↗

LOOKING FOR MORE INFORMATION?

Visit us on the web at www.artisanng.com ↗ for more information on price quotations, drivers, technical specifications, manuals, and documentation

Contact us: (888) 88-SOURCE | sales@artisanng.com | www.artisanng.com



Agilent L4445A Microwave Switch/Attenuator Driver

Data Sheet

- LXI compliance includes built-in Ethernet connectivity
- Fully-featured graphical Web interface
- Control of most popular microwave switches and attenuators
- Expandable with 34945EXT
- Distribution boards allow for easy wiring
- Switch read-back capabilities
- External power option for simultaneous switching
- Software drivers for most common programming environments



Microwave switch/attenuator driver offers support of most common microwave switches with distribution boards for easy configuration

The Agilent L4445A is a LXI Class C compliant instrument that controls external switches and attenuators. With its small size and Ethernet connectivity, the switch/attenuator driver can be placed wherever your application needs it.

The Agilent L4445A provides digital outputs to control switches, attenuators, and other devices that are typically used to route signals in a high frequency system. Many of the most popular microwave switches

and attenuators are supported through the distribution boards. The distribution boards enable fast and easy connection to the microwave devices.

Using this LXI instrument, you'll get all the benefits of an Ethernet connection, instrument Web server, standard software drivers and more. The LXI standard is supported by multiple vendors, enabling lower cost of test with accelerated test integration and development.



Agilent Technologies

Microwave switch driver for easy routing of high frequency signals in your system

The L4445A allows you to control switches, attenuators and other devices close to your device under test. The L4445A combined with the 34945EXT provides the power and control signals to drive up to 64 switch coils—that's 32 standard SPDT switches.

The L4445A can be extended by adding additional 34945EXT extenders. The first 34945EXT is powered by the L4445A. You can add up to seven additional 34945EXT extenders with user supplied power. Multiple switch operations are performed in sequential order, or for faster, simultaneous switching, you can connect an external power supply to the 34945EXT.

The digital outputs can also be used to drive LEDs for indication of the switch position. The L4445A/34945EXT also has digital inputs so that you can read back the actual position of the switch or attenuator.

The L4445A comes with a standard 9-pin connector for simple connection to the 34945EXT. The Y1150A-Y1155A distribution boards plug onto the 34945EXT and are used to route the power and control signals from the driver to the switches using user supplied cables. This enables simple connections to the external switches without a lot of complicated wiring.

The following microwave switches and attenuators are supported with the Y1150A-Y1155A distribution boards:

- N181x series SPDT switches
- 8762/3/4 series SPDT switches (screw terminals)
- 87104x/106x multiport switches
- 87406x series matrix switches
- 87204x/206x series multiport switches

- 87606x series matrix switches
- 87222x transfer switches
- 849x series attenuators
- 8490x series attenuators
- Screw terminal connections

Ethernet connectivity enables simple connection to the network and remote access to measurements

The Ethernet interface offers high-speed connections that allow for remote access and control. You can set up a private network to filter out unwanted LAN traffic and speed up the I/O throughput, or take advantage of the remote capabilities and distribute your tests worldwide. Monitor, troubleshoot, or debug your application remotely. Ethernet communication also can be used with the support of LAN sockets connections.

The optional GPIB interface has many years of proven reliability for and can be used for easy integration into existing applications.

The L4445A ships with the Agilent E2094N I/O Libraries Suite making it easy for you to configure and integrate instruments into your system – even if your system includes instruments from multiple vendors.

Fully-featured graphical Web interface makes it easy to set-up and troubleshoot your tests from anywhere in the world

The built-in Web browser interface provides remote access and control of the instrument via a Java-enabled browser such as Internet Explorer. Using the Web interface, you can set up, troubleshoot, and maintain your instrument from remote locations.

- View and modify instrument setup
- Configure switch channels and switch pairs
- Open or close switches
- Send, receive and view SCPI commands
- Define and execute switch sequences
- View error queue
- Get status reports on relay cycle counts, firmware revisions, and more

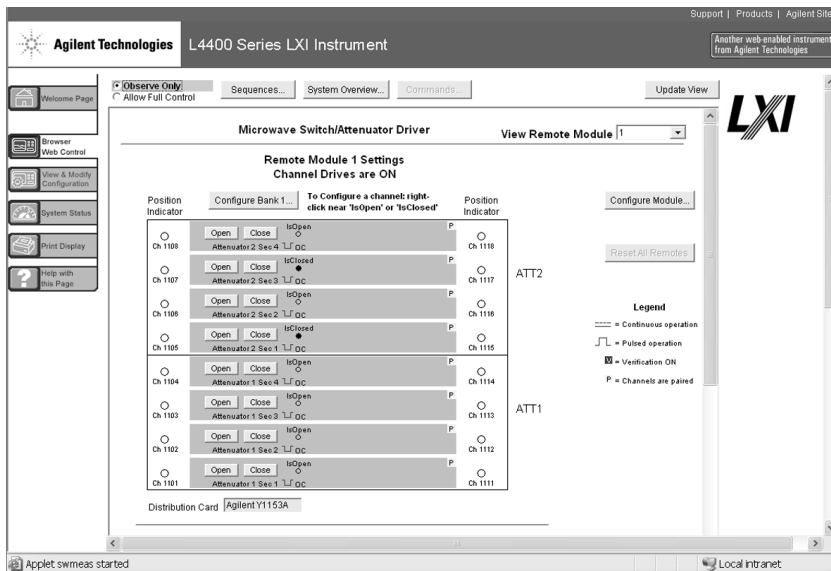


Figure 1. The Web interface makes it easy to set up, troubleshoot and maintain your test remotely

Additionally, since the Web server is built into the instrument, you can access it on any operating system that supports the Web browser without having to install any special software. Password protection and LAN lockout are also provided to limit access for additional security.

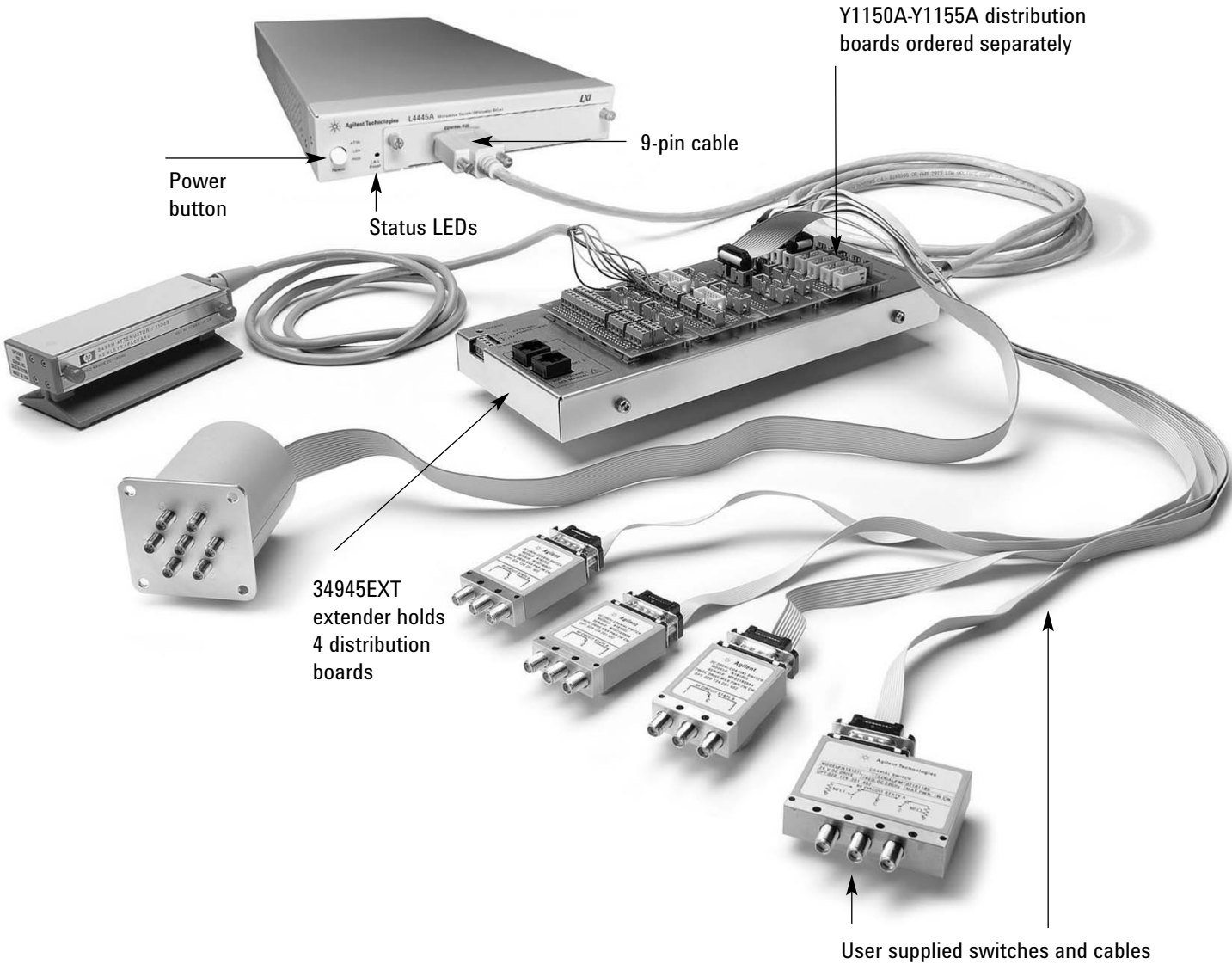
Software for most popular programming environments

Full support for standard programming environments ensures compatibility and efficiency. You can use direct I/O with the software you already have and know, or use standard

IVI and LabVIEW™ software drivers that provide compatibility with the most popular development environments:

- Agilent T&M Toolkit for Microsoft Visual Studio®.NET and Agilent VEE Pro
- National Instruments LabVIEW, LabWindows/CVI, TestStand, and Switch Manager
- Microsoft C/C++® and Visual Basic®

High-performance switching wherever your application needs it



Product Specifications

Specifications and Characteristics

34945EXT switch drive

64 channels, low side drive mode	Driver off voltage (max)	30 V
	Driver off leakage current	500 uA
	Driver on current (max)	600 mA
	Driver on voltage (max)	0.5 V @ 600 mA
64 channels, TTL drive mode	Hi output voltage	3 V @ Iout = 2 mA
	Lo output voltage	0.4 V @ Iin = 20 mA
	Lo input current	20 mA

34945EXT position indicator sense inputs

Channels	64
Lo input voltage (max)	0.8 V
Hi input voltage (min)	2.5 V
Input resistance	>100 kΩ @ Vin ≤ 5 V >20 kΩ @ Vin > 5 V
Maximum input voltage	30 V

34945EXT switch drive power supply (34945EXT powered by 34945A)

Voltage	24 V nominal (external power supply required for switches needing different voltages)
Current	100 mA continuous + 200 mA (15 ms pulse, 25% duty cycle)

34945EXT external power connection

Voltage range	4.75 V to 30 V
Current limit	2 A

LED indicator (Current mode drivers)

Channels	64
Supply voltage	5 V nominal
LED drive current	5 mA nominal (prog 1-20 mA)
Driver compliance voltage	0.8 V

Maximum 8 34945Ext's per L4445A

Product Specifications (continued)

Memory

States	5 instrument states with user label in non-volatile memory
--------	--

General specifications

Power supply	Universal 100 V to 240 V $\pm 10\%$
Power line frequency	50 Hz to 60 Hz $\pm 10\%$ automatically sensed
Power consumption	15 VA
Operating Environment	Full accuracy for 0°C to 55°C Full accuracy to 80% R.H. at 40 °C
Storage environment	-40°C to 70°C
Dimensions (H x W x L)	40.9 x 212.3 x 379.3 mm 1.61 x 8.36 x 14.93 in
34945EXT dimensions	38.1 x 114.3 x 284.5 mm 1.5 x 4.5 x 11.2 in with distribution boards installed
Weight	3.6 kg, 8.0 lbs
Safety conforms to	CSA, UL/IEC/EN 61010-1
EMC conforms to	IEC/EN 61326-1, CISPR 11
Warranty	1 year

Product Specifications (continued)

Software

Agilent connectivity software included	Agilent I/O Libraries Suite 14 or greater (E2094N)
--	--

Minimum system requirements

PC hardware	Intel Pentium 100 MHz, 64 Mbyte RAM, 210 Mbyte disk space Display 800x600, 256 colors, CD-ROM drive
Operating system ¹	Windows [®] 98 SE/NT/2000/XP

Computer interfaces

Standard LAN 10BaseT/100BaseTx
Optional IEEE 488.2 GPIB

Software driver support for programming languages

Software drivers	IVI-C and IVI-COM for Windows NT [®] /2000/XP LabVIEW
------------------	---

Compatible with programming tools and environments

Agilent	VEE Pro T&M Toolkit (reqs Visual Studio.NET)
National Instruments	TestStand Measurement Studio LabWindows/CVI LabVIEW Switch Executive
Microsoft	Visual Studio.NET [®] C/C++ Visual Basic 6 [®]

¹ Load I/O Libraries Version M for Windows NT support or version 14.0 for Windows 98 SE support

Ordering information

Example configuration:

A test system is being built that requires the following Microwave Switching:

- (qty 2) Agilent 87206B SP6T Switches
- (qty 8) Agilent N1810UL SPDT Switches

Select the quantity of distribution boards for the required switches using the ordering info below:

- Qty 2 Y1152A Distribution boards to control qty 2 87206B switches.
- Qty 1 Y1150A Distribution board to control qty 8 N1810UL switches.

Notice that each Y1152A can also drive two N181x switches. Therefore if you only needed to drive 4 N1810 switches, then you could have controlled those switches via the Y1152A distribution boards already selected.

Here is the final recommended configuration:

- (qty 2) 87206B DC-20 GHz SP6T Switches
- (qty 8) N1810UL DC-20 GHz SPDT Switches
- (qty 1) L4445A Switch/Attenuator Driver (when ordering the L4445A, the 34945EXT is automatically added for controlling switches)
- (qty 2) Y1152A Distribution Boards
- (qty1) Y1150A Distribution Board
- Either build own cables using off-the-shelf parts, or order qty 1 Y1159A 16-to-16 pin connect kit (supplies for 2 cables) and qty 2 Y1157A 9-to-10 pin cable kit (supplies for 4 cables).

We recommend that the switch be ordered with options for 24 V coils, position indicators, and socket connectors. Since 24 V latching relays are specified, there is no need for an external power supply. The L4445A instrument can provide power for a single 34945EXT. Easy-to-build ribbon cables can be built to interface each of the switches to the Y1150A and Y1152A distribution boards. See the Application note: Configuring an RF/ Microwave Switch System (5989-2272EN) for additional configuration details.

Ordering information (Continued)

**L4445A Microwave Switch/
Attenuator driver**

Includes User's guide on CD, test report, power cord, and Quick Start package

Option - GPIB

Adds GPIB interface

Option 0B0

Deletes printed manual set, full documentation included on CD ROM

Option ABA

English printed manual set

L4445A Accessories

Distribution boards are required for control of external switches.

One 34945EXT external driver required for each 64 coils – holds 4 distribution boards per 34945EXT extender

Y1150A

34945EXT distribution board for 8 N181x SPDT switches

Y1151A

34945EXT distribution board for two 87104x/106x multiport or 87406B matrix switches

Y1152A

34945EXT distribution board for one 87204x/206x or 87606B switch and two N181x switches

Y1153A

34945EXT distribution board for two 84904/5/6/7/8 or 8494/5/6 step attenuators

Y1154A

34945EXT distribution board for two 87222 transfer switches and six N181x SPDT switches

Y1155A

34945A distribution board w/ generic screw terminals for driving 16 switch coils

Cable kits for connecting switches to distribution boards:

Y1157A

9-to-10 pin cable kit for Y1150A, Y1152A, Y1154A - supplies to build 4 cables

Y1158A

10-to-10/10-to-14 pin cable kit for Y1153A, Y1154A - supplies to build 2 cables

Y1159A

16-to-16 pin cable kit for Y1150A/51A/52A/53A/54A/55A - supplies to build 2 cables

Other accessories

Y1160A

Rack mount kit for L4400 series instruments - racks 2 instruments side-by-side with sliding tray

For additional information please visit:

<http://www.agilent.com/find/L4445A>

Related Agilent literature

Data Sheets

5988-6302EN

Agilent VEE Pro

5989-1441EN

Agilent W1140A-TKT

T&M Toolkit 2.0 with
Test Automation

5989-1439EN

Agilent E2094N

I/O Libraries Suite 14

5989-2272EN

Configuring an

RF/Microwave Switch System

Agilent Technologies' Test and Measurement Support, Services, and Assistance

Agilent Technologies aims to maximize the value you receive, while minimizing your risk and problems. We strive to ensure that you get the test and measurement capabilities you paid for and obtain the support you need. Our extensive support resources and services can help you choose the right Agilent products for your applications and apply them successfully. Every instrument and system we sell has a global warranty. Two concepts underlie Agilent's overall support policy: "Our Promise" and "Your Advantage."

Our Promise

Our Promise means your Agilent test and measurement equipment will meet its advertised performance and functionality. When you are choosing new equipment, we will help you with product information, including realistic performance specifications and practical recommendations from experienced test engineers. When you receive your new Agilent equipment, we can help verify that it works properly and help with initial product operation.

Your Advantage

Your Advantage means that Agilent offers a wide range of additional expert test and measurement services, which you can purchase according to your unique technical and business needs. Solve problems efficiently and gain a competitive edge by contracting with us for calibration, extra-cost upgrades, out-of-warranty repairs, and on-site education and training, as well as design, system integration, project management, and other professional engineering services. Experienced Agilent engineers and technicians worldwide can help you maximize your productivity, optimize the return on investment of your Agilent instruments and systems, and obtain dependable measurement accuracy for the life of those products.



Agilent Email Updates

www.agilent.com/find/emailupdates

Get the latest information on the products and applications you select.



Agilent Direct

www.agilent.com/find/agilentdirect

Quickly choose and use your test equipment solutions with confidence.



Agilent Open

www.agilent.com/find/open

Agilent Open simplifies the process of connecting and programming test systems to help engineers design, validate and manufacture electronic products. Agilent offers open connectivity for a broad range of system-ready instruments, open industry software, PC-standard I/O and global support, which are combined to more easily integrate test system development.

www.agilent.com

For more information on Agilent Technologies' products, applications or services, please contact your local Agilent office. The complete list is available at:

www.agilent.com/find/contactus

Phone or Fax

United States:

(tel) 800 829 4444

(fax) 800 829 4433

Canada:

(tel) 877 894 4414

(fax) 800 746 4866

China:

(tel) 800 810 0189

(fax) 800 820 2816

Europe:

(tel) 31 20 547 2111

Japan:

(tel) (81) 426 56 7832

(fax) (81) 426 56 7840

Korea:

(tel) (080) 769 0800

(fax) (080) 769 0900

Latin America:

(tel) (305) 269 7500

Taiwan:

(tel) 0800 047 866

(fax) 0800 286 331

Other Asia Pacific Countries:

(tel) (65) 6375 8100

(fax) (65) 6755 0042

Email: tm_ap@agilent.com

Contacts revised: 09/26/05

Product specifications and descriptions in this document subject to change without notice.

Microsoft® and Windows® are U.S. registered trademarks of Microsoft® Corporation

LabVIEW™ is a U.S. registered trademark of National Instruments Corporation

© Agilent Technologies, Inc. 2006

Printed in the USA, February 28, 2006

5989-4828EN



Agilent Technologies



Artisan Technology Group is your source for quality new and certified-used/pre-owned equipment

- FAST SHIPPING AND DELIVERY
- TENS OF THOUSANDS OF IN-STOCK ITEMS
- EQUIPMENT DEMOS
- HUNDREDS OF MANUFACTURERS SUPPORTED
- LEASING/MONTHLY RENTALS
- ITAR CERTIFIED SECURE ASSET SOLUTIONS

SERVICE CENTER REPAIRS

Experienced engineers and technicians on staff at our full-service, in-house repair center

*InstraView*SM REMOTE INSPECTION

Remotely inspect equipment before purchasing with our interactive website at www.instraview.com ↗

WE BUY USED EQUIPMENT

Sell your excess, underutilized, and idle used equipment. We also offer credit for buy-backs and trade-ins. www.artisanng.com/WeBuyEquipment ↗

LOOKING FOR MORE INFORMATION?

Visit us on the web at www.artisanng.com ↗ for more information on price quotations, drivers, technical specifications, manuals, and documentation

Contact us: (888) 88-SOURCE | sales@artisanng.com | www.artisanng.com