



Artisan Scientific

QUALITY INSTRUMENTATION ... GUARANTEED

Looking for more information?

Visit us on the web at <http://www.artisan-scientific.com> for more information:

- Price Quotations
- Drivers
- Technical Specifications, Manuals and Documentation

Artisan Scientific is Your Source for Quality New and Certified-Used/Pre-owned Equipment

- Tens of Thousands of In-Stock Items
- Hundreds of Manufacturers Supported
- Fast Shipping and Delivery
- Leasing / Monthly Rentals
- Equipment Demos
- Consignment

Service Center Repairs

Experienced Engineers and Technicians on staff in our State-of-the-art Full-Service In-House Service Center Facility

InstraView™ Remote Inspection

Remotely inspect equipment before purchasing with our Innovative InstraView™ website at <http://www.instraview.com>

We buy used equipment! We also offer credit for Buy-Backs and Trade-Ins

Sell your excess, underutilized, and idle used equipment. Contact one of our Customer Service Representatives today!

Talk to a live person: 888-88-SOURCE (888-887-6872) | Contact us by email: sales@artisan-scientific.com | Visit our website: <http://www.artisan-scientific.com>

Optical channel Selector AQ3540

- *Simple operating channel selector with excellent selection repeatability and low dependence on polarization for construction of optical transmission systems and optical devices.*

GP-1B



General

The high-performance AQ3540 Optical Channel Selector comes with one or two selectable common I/O optical connectors (COM1 and COM2 ports), and 16 selectable I/O optical connectors (CH1 to CH16). Input is possible through either COM1 or COM2 ports, and any of CH1 to CH16. This means it is possible to connect light sources to COM1 and COM2, and output the either to ant of the connected transmission paths.

Likewise, multiple light sources can be connected to channels 1 through 16, and the output switched to either COM1 or COM2. With excellent selection repeatability, low insertion loss, high return loss and low dependence on polarization, it is easier than ever to construct automatic measurement systems for development, manufacturing and inspection tasks in optical transmission systems and devices

When used together with Ando's AQ7210 Optical Fiber Analyzer, continuous measurement of multi-core optical fiber is possible without a controller, providing a significant improvement in multi-core³ fiber construction.

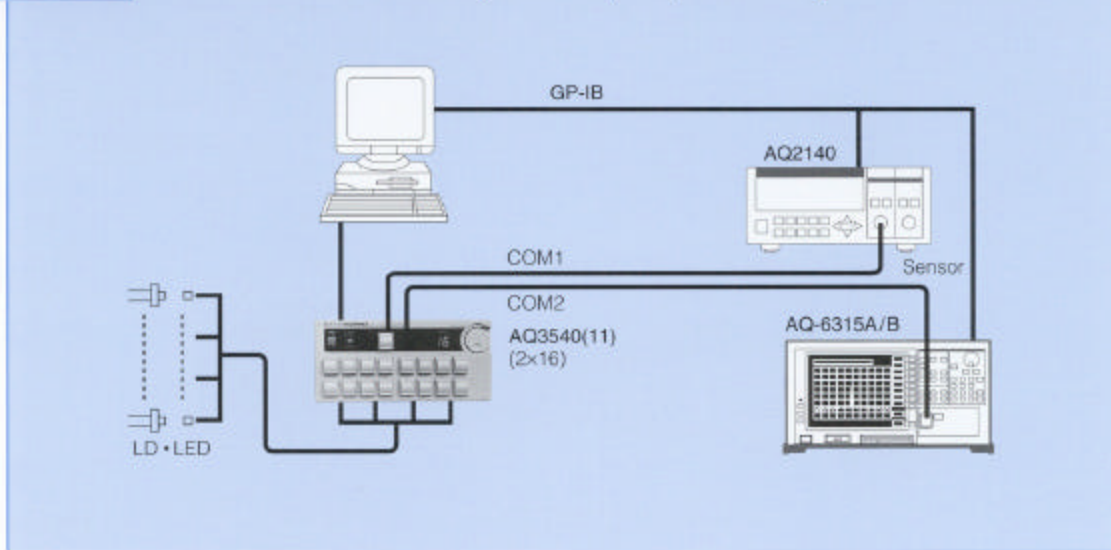
Features

- **Superb selection repeatability (typical 0.003dB)**
- **Low polarization dependency loss: 0.05dBP-P or less**
- **High return loss (45dB or 60dB)**
- **Low insertion loss (typical 1.2dB)**
- **Long switch life (typical 10 million cycles)**
- **Manual-free operation by rotary encoder input**
- **Compatible with both SM and GI optical fiber**

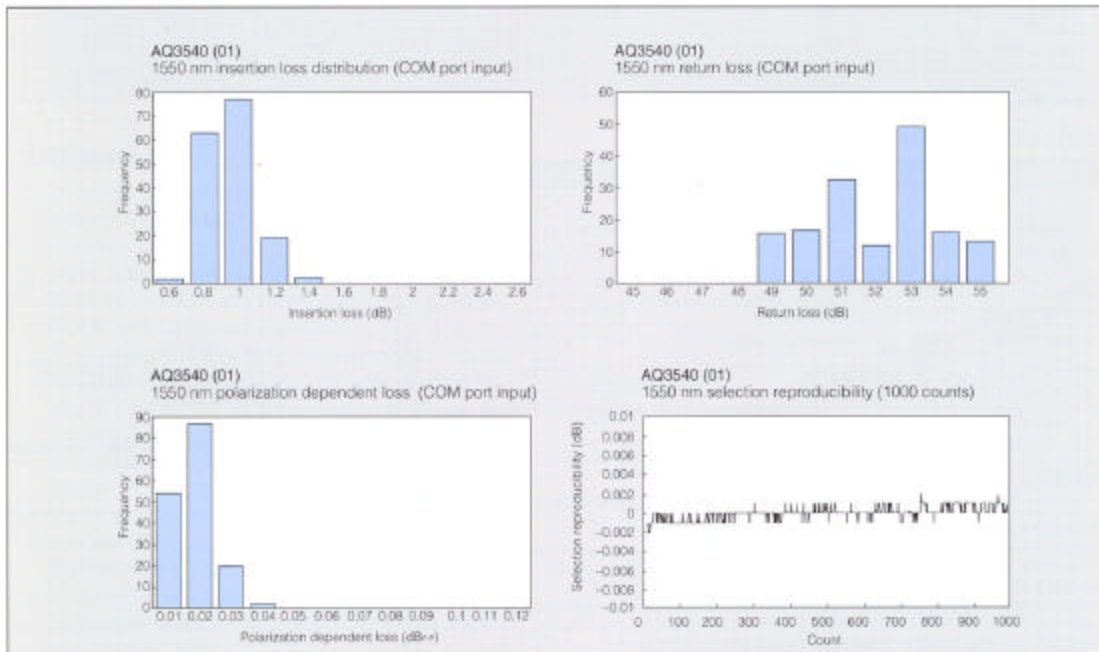
3

Automatic measurement of light-emitting devices

Multiple light-emitting devices are driven successively, and the channel selected to match each one in this sample system, which automatically measures optical power with the optical multimeter and emission wavelength with the optical spectrum analyzer.



Reference data



Specifications

	AQ3540 (01)	AQ3540 (11)	AQ3540 (22)	AQ3540 (31)	AQ3545 (01)
Channel display	7-segment LED, 2-digit				
Selectable channels	1×16	2×16*	1×16	1×16 (32)**	1×16
Wavelength rang	1200 to 1650nm				850/1300nm
Insertion loss [1]	2.5dB or less	4.5dB or less	2.5dB or less	4.5dB or less	3.0dB or less
Typ. Insertion loss	1.2dB	2.5dB	1.2dB	2.5dB	—
Selection repeatability [2]	0.01dB P-P or less	0.03dB P-P or less	0.01dB P-P or less	0.03dB P-P or less	0.02dB P-P or less
Typ. Selection repeatability	0.003dB P-P	0.01dB P-P	0.003dB P-P	0.01dB P-P	—
Adjacent channel switching time	500ms or less				
Return loss [1]	45dB or more[4]	40dB or more[4]	60dB or more[5]	40dB or more[4]	25dB or more[6]
Typ. Return loss	50dB [4]	—			
Polarization dependency loss [3]	0.05dB P-P or less	—			
Typ. Polarization dependency loss	0.02dB P-P	0.05dB P-P			
Crosstalk [3]	-80dB or less	-65dB or less	-80dB or less	65dB or less	-80dB or less
Tyr. Selector life	10 million cycles				
Applicable optical fiber	SM 10/125 μm				GI 150/125 μm
I/O connectors	FC-PC [7]		SC-APC [8]	FC-PC [7]	FC-PC
GP-IB	Complies with IEEE-488				
Power requirement	AC100 to 120V, 200 to 240V, 50/60Hz, approx. 50VA				
Environmental conditions	Operating temperature: 0 to +50°C, storage temperature: -10 to 60°C, humidity: 85% RH or less				
Dimensions and mass	Approx. 283 (W) × 132 (H) × 350 (D)mm, approx 6kg				
Accessories	Power cord (approx. 3m long): 1ea., instruction manual: 1ea., connection cord (approx. 2m long): 1ea.[9], optical fiber cable (SM: 10/125 μm, approx. 2m long): 1ea.[9]				

Note: 1-5: Input through COM port with master cable, at constant temperature

[1] AQ3540 () at wavelength 1310/1550nm.

[2] AQ3540 () at wavelength 1310/1550nm (constant polarization state), with 50 selections. However, wavelength selection is required in wavelength correction mode.

[3] AQ3540 () at wavelength 1550nm (set wavelength correction mode to 1550nm).

[4] Dependant on connector (using PC connector with return loss of 48dB or more).

[5] Dependant on connector (using Angled PC connector with return loss of 63dB or more).

[6] Dependant on connector (using PC connector with return loss of 31dB or more).

[7] Other connector's available, Consult your vendor or our sales office.

[8] Manufactured by seikoh Giken. APC: Angled PC.

[9] Appended to AQ3540 (31)/(32) only

Ordering information

Model	Type	Applicable optical fiber	I/O connector
AQ3540 (01)	1×16 standard	SM 10/125μm	FC-PC
AQ3540 (02)	1×16 standard	SM 10/125μm	SC-PC
AQ3540 (11)	2×16*	SM 10/125μm	FC-PC
AQ3540 (12)	2×16*	SM 10/125μm	SC-PC
AQ3540 (22)	1×16 high return loss	SM 10/125μm	SC-Angled PC
AQ3540 (31)	1×32 with expansion support**	SM 10/125μm	FC-PC
AQ3540 (32)	1×32 with expansion support**	SM 10/125μm	SC-PC
AQ3545 (01)	1×16 standard	GI 50/125μm	FC-PC

*Has two COM ports.

**Can realize up to 1×32 channel in combination with 1×16 standard optical channel selector

Specifications are subject to change without notice

ANDO ELECTRIC CO.,LTD.

19-7, KAMATA 4-chome, Ota-ku, Tokyo, 144 japan Phone: (03)3733-1151 Fax (03)3739-7310

ANDO CORPORATION

HEADQUARTERS: 2021 N. Capital Avenue, San Jose, CA 95132, U.S.A. Phone: (408)941-0100 Fax: (408)941-0103

EAST OFFICE: 7617 Standish Place, Rockville, MD 20855, U.S.A. Phone: (301)294-3365 Fax: (301)294-3359

ANDO EUROPE B.V.

HEADQUARTERS: "Vijverdam", Dalsteindreef 57, 1112XC Diemen, The Netherlands Phone: 020-6981441 Fax: 020-6998938

NIEDERLASSUNG DEUTSCHLAND: Dachauer StraBe 340,1. OG, D-80993 Muchen, Germany Phone: 089-1438150 Fax: 089-14381555

ANDO ELECTRIC SINGAPORE PTE.LTD.

19 Kim Keat Road #05-03, Jumbo Industrial Building, Singapore 328804 Phone: 251-1391 Fax: 251-1987

ANDO ELECTRIC INCORPORATION

5F-2, No 81, Nan-ta Road, Hsin-chu City, Taiwan Phone: (35)614131 Fax: (35)614130



Artisan Scientific

QUALITY INSTRUMENTATION ... GUARANTEED

Looking for more information?

Visit us on the web at <http://www.artisan-scientific.com> for more information:

- Price Quotations
- Drivers
- Technical Specifications, Manuals and Documentation

Artisan Scientific is Your Source for Quality New and Certified-Used/Pre-owned Equipment

- Tens of Thousands of In-Stock Items
- Hundreds of Manufacturers Supported
- Fast Shipping and Delivery
- Leasing / Monthly Rentals
- Equipment Demos
- Consignment

Service Center Repairs

Experienced Engineers and Technicians on staff in our State-of-the-art Full-Service In-House Service Center Facility

InstraView™ Remote Inspection

Remotely inspect equipment before purchasing with our Innovative InstraView™ website at <http://www.instraview.com>

We buy used equipment! We also offer credit for Buy-Backs and Trade-Ins

Sell your excess, underutilized, and idle used equipment. Contact one of our Customer Service Representatives today!

Talk to a live person: 888-88-SOURCE (888-887-6872) | Contact us by email: sales@artisan-scientific.com | Visit our website: <http://www.artisan-scientific.com>