



Artisan Technology Group is your source for quality new and certified-used/pre-owned equipment

- FAST SHIPPING AND DELIVERY
- TENS OF THOUSANDS OF IN-STOCK ITEMS
- EQUIPMENT DEMOS
- HUNDREDS OF MANUFACTURERS SUPPORTED
- LEASING/MONTHLY RENTALS
- ITAR CERTIFIED SECURE ASSET SOLUTIONS

SERVICE CENTER REPAIRS

Experienced engineers and technicians on staff at our full-service, in-house repair center

*InstraView*SM REMOTE INSPECTION

Remotely inspect equipment before purchasing with our interactive website at www.instraview.com ↗

WE BUY USED EQUIPMENT

Sell your excess, underutilized, and idle used equipment. We also offer credit for buy-backs and trade-ins. www.artisanng.com/WeBuyEquipment ↗

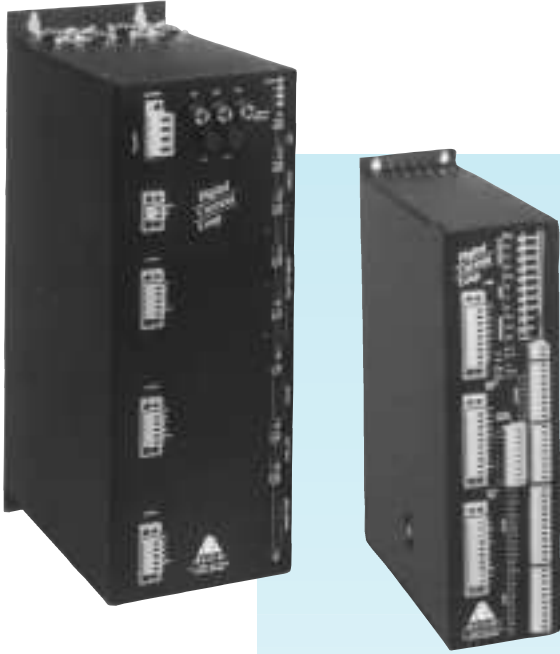
LOOKING FOR MORE INFORMATION?

Visit us on the web at www.artisanng.com ↗ for more information on price quotations, drivers, technical specifications, manuals, and documentation

Contact us: (888) 88-SOURCE | sales@artisanng.com | www.artisanng.com

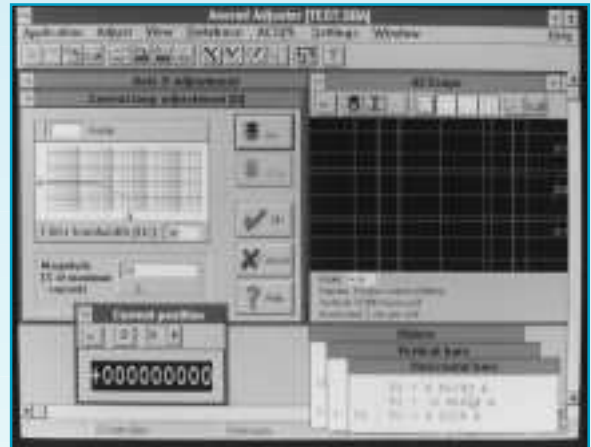
Digital Servo Controllers

D-SERV/ M-SERV



Many other Anorad servo controllers are available, including bus based (PC & VME) and C-programmable. Anorad linear motors also work with many third party controls. Contact factory for details.

- Matched to all Anorad linear motors
- 1-3 axis digital servo controllers
- Integral digital amplifier and power supply
- Sinusoidal software commutation
- Graphical User Interface with Softscope
- 20 kHz servo update rate, per axis

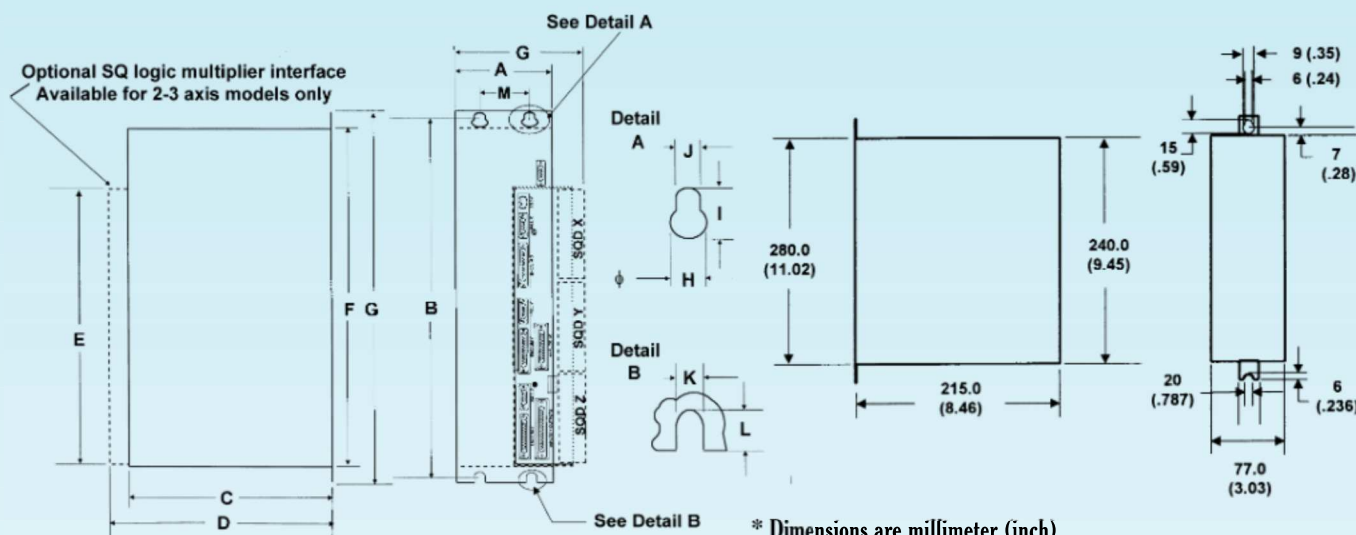


Specifications

Number of Axes	1			2	3
Model Number	M-Serv-MLH-1	D-Serv-DLM-1	D-Serv-DLH-1	D-Serv-DLM-2	D-Serv-DLM-3
Order Number	70641-A	70782-A	70642-A	71028-A	70855-A
Continuous Output Current (RMS)	2.1 A	7.1 A	10.6 A	4.6 A	4.6 A
Peak Output Current (RMS)	4.3 A	14 A	21 A	9.2 A	9.2 A
AC Input Voltage	85 Vac - 240 Vac	115 or 230 VAC			
	47-63 Hz Single Phase	47-63 Hz Single or 3 Phase			
Bus Voltage @ 230 VAC				320 Vdc	
Bus Voltage @ 115 VAC				170 Vdc	
Continuous Power	25 W				100 W
Peak Power	1K W				1.5 KW
Update Period				50 μ s (20kHz)	
Current Resolution @ 2 kHz				14 BITS	
Velocity Resolution				14 BITS	
Current Loop Bandwidth				2.5 kHz	

D-SERV

M-SERV



ORDER NO.	Controller	# axes	A	B	C	D	E	F	G	H	I	J	K	L	M
70782-A, 70642-A	D-Serv	1	80 (3.15)	338.5 (13.33)	230 (9.06)	n/a	n/a	302 (11.89)	348 (13.70)	8 (.32)	11 (.43)	5 (.20)	5 (.20)	8 (.32)	50 (1.97)
71028-A, 70855-A	D-Serv	2 or 3	154 (6.06)	429 (16.89)	258 (10.16)	281.94 (11.10)	330.2 (13.00)	404 (15.91)	450 (17.72)	12 (.47)	18 (.71)	7 (.28)	7 (.28)	18 (.71)	100 (3.94)
70641-A	M-Serv	1	-	-	-	-	-	-	-	-	-	-	-	-	-

Controller

- Servo update rate: 20 kHz
- Servo algorithm: Second order filter, acceleration and velocity feedforward
- Position range: ± 999,999,999 counts
- Velocity range: ± 1 to 20,000,000 counts/sec (D-Serv)
± 1 to 10,000,000 counts/sec (M-Serv)
- Acceleration range: 1,000 to 127,000,000 counts/s²

Software Attributes

- Error-mapping, Real-time data collection, Position event generator (optional)
- Built-in motion modules: linear and repetitive point-to-point move, search for contact, jogging, master-slave, electronic cam, registration mark moves, index searching at any speed
- Conditional statements, special states and variables which reflect motion, arrays, variables, counters, nested subroutines, arithmetic and logical expressions
- Automatic execution routines, interactive data entry

Communication/Inputs/Outputs

- Communication: RS232, RS422, up to 9,600 baud
- Encoder input: 3 channel differential line receiver
- Analog inputs: ± 10 V, 12 bit resolution
(2) /axis D-Serv, (1) /axis M-Serv
- Analog outputs: (1) /axis ± 10V, 10 bit resolution
- Dedicated inputs: (2) limits, opto-isolated, 5V /axis, (1) drive fault
- Digital inputs: (8) single, (16) multi axis, opto-isolated D-Serv;
(6) opto-isolated M-Serv
- Digital outputs: (8) single, (16) multi-axis, opto-isolated
Supported by a built-in 24V isolated supply
50 mA output sink capability D-Serv
(2) opto isolated, CE floating M-Serv
- Brake driver: Built in 24V (0.75A) for brake/clutch control/axis
(single axis D-Serv only)

Protection, Diagnostics and Error Handling

- All errors handled by automatic routines
- Programmable software limits, stall and dynamic force limits
- Automatic drive shutdown when: emergency stop is activated, position feedback signal is lost, user-defined position error is exceeded, five volt overvoltage, and overheating
- Automatic warning if the axis moves away from its target by more than a pre-defined distance
- Host communication with check-sum validation
- Immediate status response to "begin motion" commands indicating either a successful execution or a reason for failure
- Immediate detailed error message for abnormal motion termination
- I/O status and memory integrity
- Built-in hardware watch-dog timer



Artisan Technology Group is your source for quality new and certified-used/pre-owned equipment

- FAST SHIPPING AND DELIVERY
- TENS OF THOUSANDS OF IN-STOCK ITEMS
- EQUIPMENT DEMOS
- HUNDREDS OF MANUFACTURERS SUPPORTED
- LEASING/MONTHLY RENTALS
- ITAR CERTIFIED SECURE ASSET SOLUTIONS

SERVICE CENTER REPAIRS

Experienced engineers and technicians on staff at our full-service, in-house repair center

*InstraView*SM REMOTE INSPECTION

Remotely inspect equipment before purchasing with our interactive website at www.instraview.com ↗

WE BUY USED EQUIPMENT

Sell your excess, underutilized, and idle used equipment. We also offer credit for buy-backs and trade-ins. www.artisanng.com/WeBuyEquipment ↗

LOOKING FOR MORE INFORMATION?

Visit us on the web at www.artisanng.com ↗ for more information on price quotations, drivers, technical specifications, manuals, and documentation

Contact us: (888) 88-SOURCE | sales@artisanng.com | www.artisanng.com