



## Artisan Technology Group is your source for quality new and certified-used/pre-owned equipment

- FAST SHIPPING AND DELIVERY
- TENS OF THOUSANDS OF IN-STOCK ITEMS
- EQUIPMENT DEMOS
- HUNDREDS OF MANUFACTURERS SUPPORTED
- LEASING/MONTHLY RENTALS
- ITAR CERTIFIED SECURE ASSET SOLUTIONS

### SERVICE CENTER REPAIRS

Experienced engineers and technicians on staff at our full-service, in-house repair center

### *InstraView*<sup>SM</sup> REMOTE INSPECTION

Remotely inspect equipment before purchasing with our interactive website at [www.instraview.com](http://www.instraview.com) ↗

### WE BUY USED EQUIPMENT

Sell your excess, underutilized, and idle used equipment. We also offer credit for buy-backs and trade-ins. [www.artisanng.com/WeBuyEquipment](http://www.artisanng.com/WeBuyEquipment) ↗

### LOOKING FOR MORE INFORMATION?

Visit us on the web at [www.artisanng.com](http://www.artisanng.com) ↗ for more information on price quotations, drivers, technical specifications, manuals, and documentation

**Contact us:** (888) 88-SOURCE | [sales@artisanng.com](mailto:sales@artisanng.com) | [www.artisanng.com](http://www.artisanng.com)

## Si-1 Motor Control

### Features

- Menu driven—no programming language to learn.
- Can connect to any pulse & direction step motor driver.
- Ideal for use with Applied Motion Products recommended drives models 1030, 1030D, 2035, 2035XD, BL7080X, 3535, BLX7080, 3540M, 5560, 7780, PDO 2035, PDO 3540, PDO 5580.
- Eight built-in programs:
  - Feed to Length moves a preset distance when TRIGGER is pulsed low (to 0 volts).
  - Feed & Jog also moves a preset distance. Jogs whenever AUX is held low.
  - Feed & Return moves a preset distance, then returns to the starting point.
  - Feed & Back Off moves a preset distance, then moves a second distance in either direction.
  - Feed to Sensor moves until the AUX changes state (can be set for rising or falling edge to accommodate most sensors).
  - Feed to Sensor & Return moves until AUX changes state, then returns to the start.
  - Register & Feed finds a registration mark, then moves preset distance.
  - Learn Speed allows user to adjust speed “on the fly,” via the knob, then press to record new speed.
- Parameters can be entered in motor steps or custom units such as inches, revolutions or gallons.
- All programs can be executed between 1 and 255 times from a single trigger. Nonstop operation can also be specified.

### Input/Output

- Two 5-24 volt optically isolated limit switch inputs, also used for power up homing feature.
- TRIGGER input to initiate motion.
- AUXILIARY input for sensor or jog control.
- Optically isolated MOTION output can signal “in motion” or “in position.” “In position” pulse width is programmable, 0.1 - 25.5 msec.
- STEP and DIRECTION outputs to motor driver, open collector, 5-24 volts, 10 microsecond STEP pulse width.
- +5V output for motor driver optoisolators, filtered & fused.

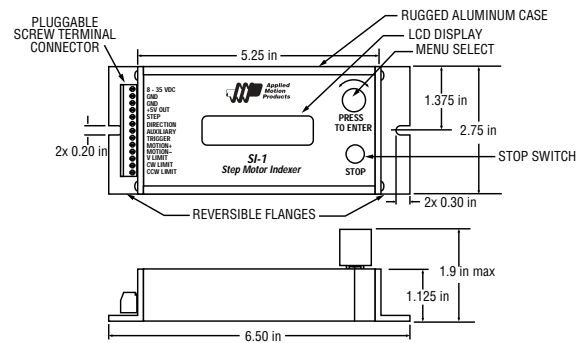
### Description

The Si-1 Indexer is reliable, versatile and easy to use. The programming terminal is built-in to simplify wiring and set up. All configuration is menu driven—the user simply picks a program and the Si-1 will request the parameters it needs. The Si-1 is CE compliant.

Once configured, the Si-1 waits for a trigger pulse to begin the program. This pulse can come from a momentary contact switch or from a logic source like a computer, PLC or another Si-1.



### MECHANICAL OUTLINE



The Si-1 can be programmed to seek a home position upon power up. Limit switches can be attached to prevent unwanted travel beyond designated limits. A built in stop button allows the operator to halt the motor at anytime.

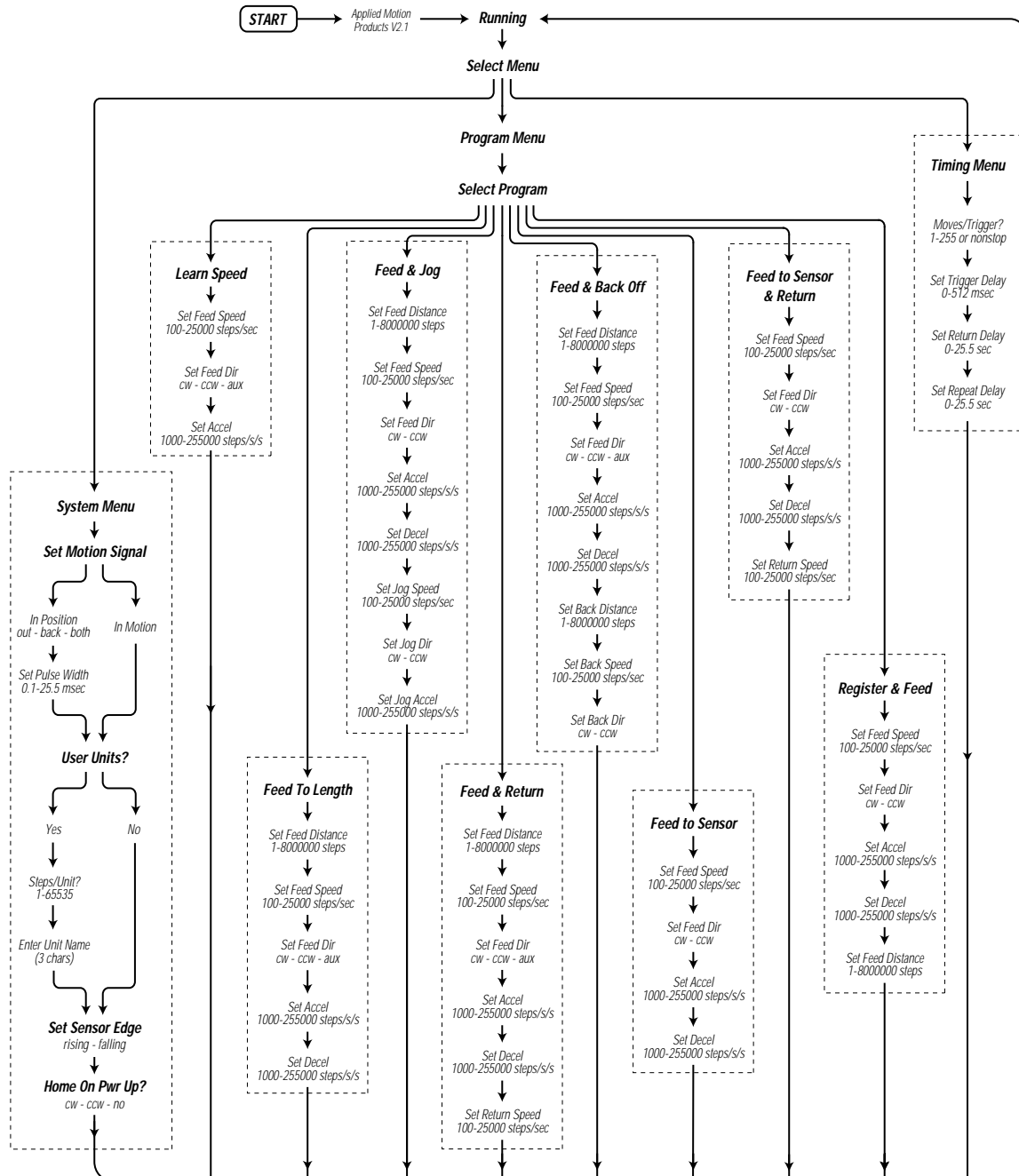
### Options

- 10 volt AC wall transformer  
P/N: WT-1

### System Features

- Up to 255 moves per trigger can be selected by setting the Moves/Trigger parameter. Nonstop can also be selected.
- The Si-1 can seek a home position upon power up by setting the Home on Power Up parameter to clockwise or counterclockwise.
- User Units allow the user to work in units other than motor steps. Simply enter the number of motor steps per unit and name the unit (up to three characters.)
- Timing is adjustable on all programs. Delay can be added between the trigger pulse and the start of motion for system synchronization. On multiple moves per trigger, the delay between moves can be set. On moves that return (Feed & Return, Feed to Sensor & Return and Feed & Back Off) the delay between feeding and returning is adjustable.
- The MOTION output can be programmed to provide a signal edge at the start and finish of each move (“in motion”), or it can provide a pulse at the end of each move (“in position”). This allows maximum flexibility when coordinating the SI-1 with other equipment.
- Can be programmed to search for rising or falling edge of sensor, allowing many types of sensors to be easily configured.

## Si-1 Menu Tree





## Artisan Technology Group is your source for quality new and certified-used/pre-owned equipment

- FAST SHIPPING AND DELIVERY
- TENS OF THOUSANDS OF IN-STOCK ITEMS
- EQUIPMENT DEMOS
- HUNDREDS OF MANUFACTURERS SUPPORTED
- LEASING/MONTHLY RENTALS
- ITAR CERTIFIED SECURE ASSET SOLUTIONS

### SERVICE CENTER REPAIRS

Experienced engineers and technicians on staff at our full-service, in-house repair center

### *InstraView*<sup>SM</sup> REMOTE INSPECTION

Remotely inspect equipment before purchasing with our interactive website at [www.instraview.com](http://www.instraview.com) ↗

### WE BUY USED EQUIPMENT

Sell your excess, underutilized, and idle used equipment. We also offer credit for buy-backs and trade-ins. [www.artisanng.com/WeBuyEquipment](http://www.artisanng.com/WeBuyEquipment) ↗

### LOOKING FOR MORE INFORMATION?

Visit us on the web at [www.artisanng.com](http://www.artisanng.com) ↗ for more information on price quotations, drivers, technical specifications, manuals, and documentation

**Contact us:** (888) 88-SOURCE | [sales@artisanng.com](mailto:sales@artisanng.com) | [www.artisanng.com](http://www.artisanng.com)