



The Power of Being There™

Technical Specifications

Avocent DS1800



DS1800 - Experience the Freedom of KVM over IP™

- Control servers with secure, powerful KVM connectivity, using ordinary network connections.
- Access an unlimited number of servers. DS1800 'KVM over IP' works with your existing network architecture.
- Provide access to virtually any number of users who can access your servers from any IP connection.
- Save time with a flexible and scalable design. Ethernet technology simplifies expansion and configuration.
- Eliminate distance limitations. Access your servers from across the building or across the world.
- The DS1800 provides administrators complete access to an unlimited number of servers or devices in the network
- Connects directly to KVM signals on any computer with no added hardware or software on the computer.
- Supports a wide range of deployment options (Direct connection to each server for non-blocked access, or combined with Analog switches)

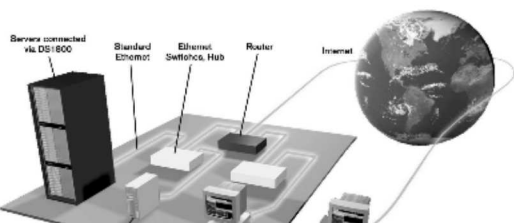
DSView

When used with Avocent's DS1800 digital switching system, DSView software provides an intuitive, graphical interface for centralised management of multi-platform servers, including Sun, USB and PS/2 machines. Customers appreciate the ease of use and integrated view that this software provides for their data center devices. DSView provides integrated access to these servers, as well as serial devices connected to an Avocent CPS1600 device in the data centre.

For all new first time DS 1800 purchases you will require qty 1 of Part # DSAUTH and at least qty 1 of part # DSVIEW1

SPECIFICATIONS

Dimensions	Height: 43mm Depth: 279mm	Width: 437mm Weight: 3.6kg
Environment/ Power		
Operating Temperature	5°C to 40°C	
Storage Temperature	-4°F to 50°C	
Operating Voltage	100 - 240 VAC	
Power Input	40 W max	
Power Frequency	50 - 60 Hz	
Supported Hardware		
Computers	Sun, USB, and PS/2	
Monitors	VGA, SVGA (XGA, XGA-II with adaptor) Maximum resolution: 1280 x 1024 @85 Hz	
Peripherals	PS/2 keyboard, PS/2 mouse, IntelliMouse (PS/2 only), IBM Scrollpoint, Logitech Mouseman+, Logitech Marble Plus, Logitech Marble FX and Kensington Expert mouse	
User Consoles:		
Type	PC running Windows NT OS and DS1800 console application	
Minimum Configuration	400MHz Pentium III with 64Mb RAM, 100BaseT NIC, XGA Video	
Recommended Configuration:	733MHz Pentium III with 256Mb Ram, 100BaseT NIC, SXGA Video	
Network Connections	Number : 1 Type: 10/100 Base T Ethernet with TCP/IP protocol	
Standards Approved	Agency UL1950, CSA C22.2 No. 950, EN60950, FCC part 15A, EN55022, EN50082	
Ordering Information		
DS1800-EU	DS1800 Digital KVM switch, 8 patch, with rack mount kit	
DSAUTH	DS1800 Admin software (one required per installation)	
DSVIEW 1- 1	DS1800 User software for one simultaneous user	
DSVIEW1-5	DS1800 User software for five simultaneous users	
DSVIEW1-100	DS1800 User software for one hundred simultaneous users	
Cable Assemblies	C/FCA-X (PS/2 Keyboard, PS/2 mouse & VGA video) C/WSN -X (Sun Keyboard, Sun mouse & 13W3 video) C/VSN-X (Sun Keyboard, Sun mouse & VGA video) C/FCA, C/WSN, C/VSN available in 4, 8, 15 and 30 foot C/USB-X (USB Keyboard, USB mouse & VGA video) C/USB available in 4, 8 and 12 foot	



Avocent International Limited
European Headquarters
Avocent House
Shannon Free Zone
Shannon, Co. Clare, Ireland

Avocent International Limited
Asia Pacific
15-01 Amara Corporate Tower
100 Tras Street
Singapore 070027

Avocent Corporation
4991 Corporate Drive
Huntsville, AL 35805
USA
Tel: 001 256 430 4000