



Artisan Technology Group is your source for quality new and certified-used/pre-owned equipment

- FAST SHIPPING AND DELIVERY
- TENS OF THOUSANDS OF IN-STOCK ITEMS
- EQUIPMENT DEMOS
- HUNDREDS OF MANUFACTURERS SUPPORTED
- LEASING/MONTHLY RENTALS
- ITAR CERTIFIED SECURE ASSET SOLUTIONS

SERVICE CENTER REPAIRS

Experienced engineers and technicians on staff at our full-service, in-house repair center

*InstraView*SM REMOTE INSPECTION

Remotely inspect equipment before purchasing with our interactive website at www.instraview.com ↗

WE BUY USED EQUIPMENT

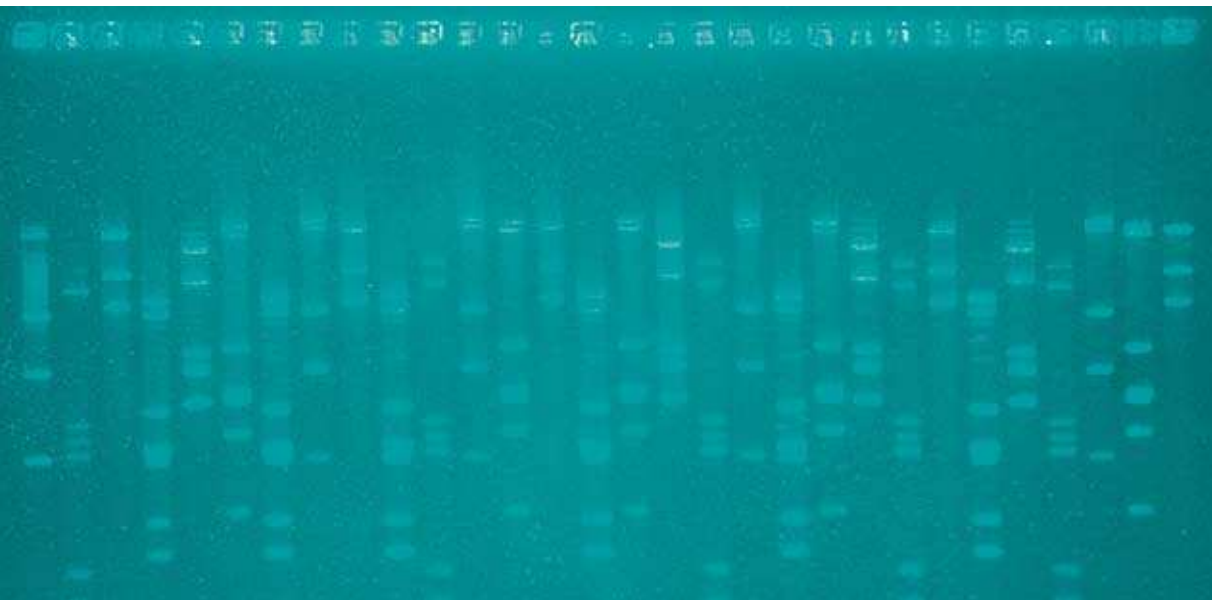
Sell your excess, underutilized, and idle used equipment. We also offer credit for buy-backs and trade-ins. www.artisanng.com/WeBuyEquipment ↗

LOOKING FOR MORE INFORMATION?

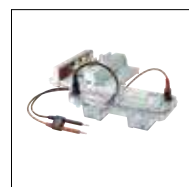
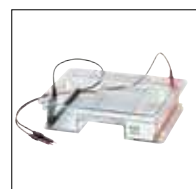
Visit us on the web at www.artisanng.com ↗ for more information on price quotations, drivers, technical specifications, manuals, and documentation

Contact us: (888) 88-SOURCE | sales@artisanng.com | www.artisanng.com

Submerged Horizontal Electrophoresis



Sub-Cell[®] Systems



Handcast or Precast
Bio-Rad's Sub-Cell Family Gives You More Options



A Sub-Cell for Every Application

The Sub-Cell family of submerged horizontal electrophoresis systems from Bio-Rad is designed with you, the molecular biologist, in mind. To fulfill your needs, we've created electrophoresis cells that are remarkably advanced, versatile, and user-friendly.

Sub-Cell GT Systems Mean Flexibility

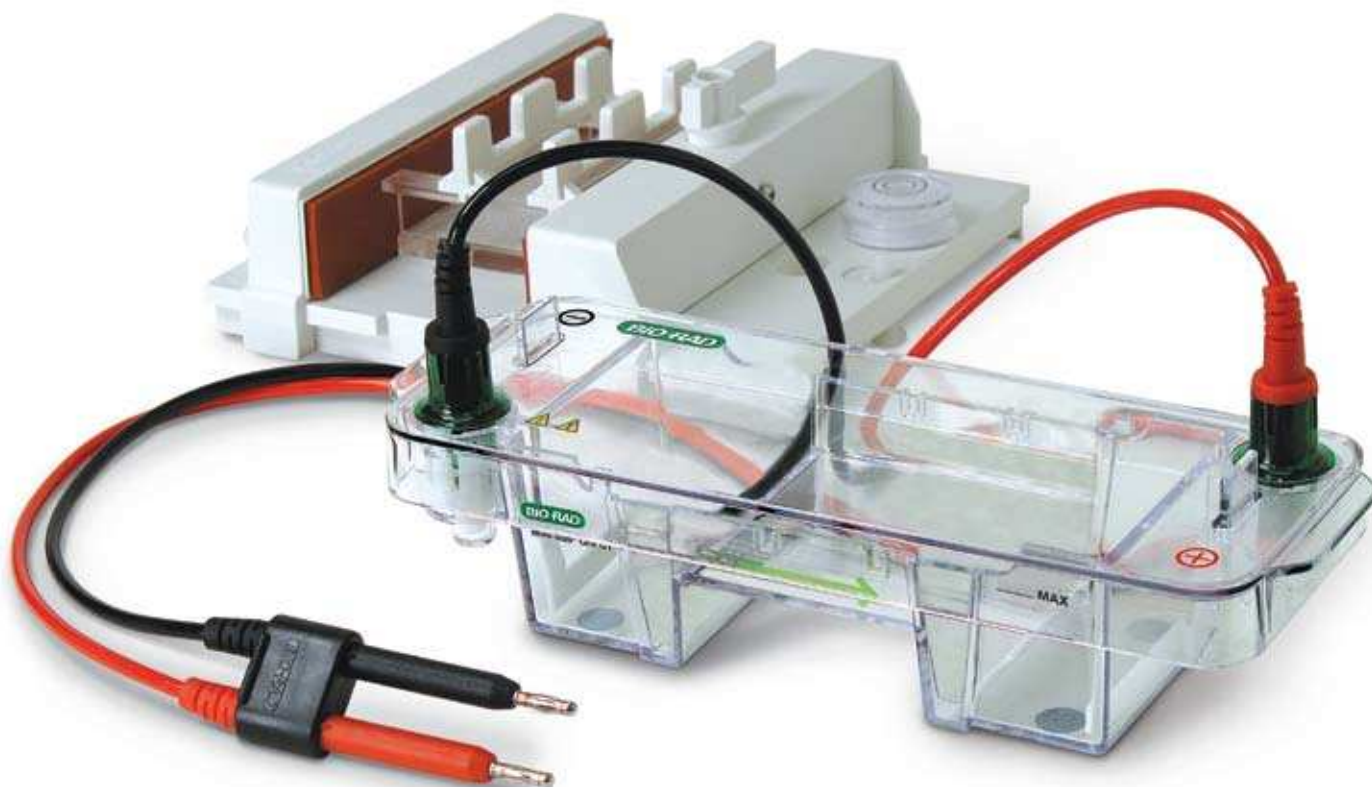
The compact Sub-Cell GT systems provide the utmost in versatility. Whether you need to separate just a few samples or up to 120, there's a Sub-Cell GT system just right for your application. Casting of agarose gels is quick and hassle free. But if you'd rather not cast your own gels, Bio-Rad's line of easy-to-use ReadyAgarose™ precast gels fits Mini-Sub® cell, wide Mini-Sub cell, mini ReadySub-Cell™, and wide mini ReadySub-Cell systems.

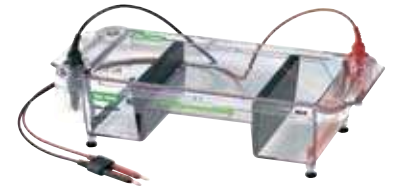
ReadySub-Cell GT Systems Jump-Start Separations

For the ultimate in streamlined operation and convenience, Bio-Rad offers the economical ReadySub-Cell GT systems in mini and wide mini formats. Ideal for simplified “run and reload” electrophoresis, ReadySub-Cell GT systems are dedicated to running ReadyAgarose precast gels.

Sub-Cell Models 96 and 192 Handle the Big Loads

Designed to accommodate the fixed spacing of multichannel pipets, the Model 96 can electrophorese up to 102 lanes of samples and standards, and the even bigger Model 192 can analyze up to 200 lanes of samples and standards — enough room for samples and standards from two 96-well plates. Just as for Sub-Cell GT systems, casting of agarose gels is quick and hassle free.





Bio-Rad Has a Sub-Cell System That's Right for You

New, Convenient Sub-Cell Systems

Mini-Sub Cell GT System

Speed up your DNA separations using the Mini-Sub cell GT cell. The short, slim format allows 7 and 10 cm runs, making it a highly economical choice. Small DNA fragments can be separated in as little as 15 minutes. Up to 30 samples can be run simultaneously.

Mini ReadySub-Cell GT

The mini ReadySub-Cell GT cell is identical to the Mini-Sub cell GT, except it is dedicated to running ReadyAgarose precast gels. This cell does not include casting gates, tray, or combs.

Wide Mini-Sub Cell GT System

Increase your sample capacity and run up to three times more samples than in other mini cells. The wide platform is ideal for fast screening applications. Up to 60 samples can be run simultaneously.

Wide Mini ReadySub-Cell GT

The wide mini ReadySub-Cell GT cell is identical to the wide Mini-Sub cell GT, except it is dedicated to running ReadyAgarose precast gels. This cell does not include casting gates, tray, or combs.

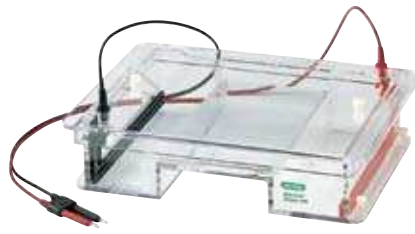
Sub-Cell GT Cell System

The Sub-Cell GT cell offers the widest choice of gel lengths, comb types, and lane configurations of any Sub-Cell model. Separate 30 samples over a distance of up to 25 cm, or use four combs and analyze as many as 120 samples.

| | | | |
|--------------------------------------|---|--|--|
| Gel sizes, cm (W x L) | 7 x 7 (Mini-Sub cell GT only) 7 x 10 (both) | 15 x 7 (wide Mini-Sub cell GT only) 15 x 10 (both) | 15 x 10 15 x 15 15 x 20 15 x 25 |
| Sample throughput | 8–30* (Mini-Sub cell GT) 8 or 12 (mini ReadySub-Cell GT) | 10–60* (wide Mini-Sub cell GT) 20, 32, or 2 x 32 (wide mini ReadySub-Cell GT) | 1–120** |
| Base buffer volume, L | ~0.27 | ~0.65 | ~1.0 |
| Cell size, cm (W x L x H) | 9.2 x 25.5 x 5.6 | 17.8 x 25.5 x 6.8 | 18 x 40.5 x 9.4 |
| Distance to electrode, cm | 14.5 | 14.5 | 29.5 |
| Bromophenol blue dye migration rates | 4.5 cm/hr (at 75 V) | ~4.5 cm/hr (at 75 V) | ~3.0 cm/hr (at 75 V) |

* Sample throughput value assumes 1–2 combs per gel.

** Sample throughput value assumes 1–4 combs per gel.



High-Throughput Sub-Cell Models

Sub-Cell Model 96 Cell

Designed for high-throughput electrophoresis, the Model 96 cell can analyze up to 102 lanes of samples and standards. Combs are spaced to be compatible with multichannel pipets, making gel loading from a 96-well plate easy. Use the 26-well comb and shorter gel tray lengths for routine laboratory separations. Buffer recirculation ports ensure consistent performance for applications that require high voltages or extended runs.

25 x 10
25 x 15

24–96*

~2.0

29 x 30 x 9

22.0

~6.2 cm/hr (at 200 V)

Sub-Cell Model 192 Cell

The Model 192 cell has even greater sample capacity than the Model 96. The 25 cm extended gel length means that over 200 lanes are available for separations. This model is ideal for RFLP, Southern and northern blotting, and PCR sample screening.

25 x 10
25 x 15
25 x 20
25 x 25

24–192**

~3.0

29 x 40 x 9

32.0

~5.2 cm/hr (at 200 V)

Features

All Sub-Cell systems have the features you want:

- Clear plastic construction for easy sample visualization
- UV-transparent gel trays with fluorescent ruler*
- Lock-in design to run ReadyAgarose precast gels
- Gel-casting gates to cast your own gels right in the cell, or optional caster for tape-free casting*
- Combs to fit every need (multichannel pipet compatible, fixed-height drop-in combs, adjustable-height combs, and preparative combs)*
- Buffer recirculation ports (Models 96 and 192 only)
- Easy-to-replace electrode assemblies

The Mini-Sub cell GT, wide Mini-Sub cell GT, and Sub-Cell GT cell models include the following features:

- Easy-to-clean electrodes — QuickSnap** electrodes are easy to remove, simplifying cleaning
- Leakproof system — new electrode design prevents buffer leaks from the base
- Intuitive setup — arrow on the side of the base indicates the direction of the run, ensuring proper gel orientation
- Simple assembly — color-coded, labeled electrodes and labeled base guarantee correct positioning of the lid on the base
- Easy lid removal — longer tabs on the base prevent incorrect lid positioning and enable easy removal of the lid, reducing buffer spillage
- Flexible design — UV-transparent gel trays, combs, and other accessories are compatible with both new and old models
- Environmentally friendly system — less plastic is used in manufacturing the redesigned model

Applications

Sub-Cell systems are ideal for all kinds of applications:

- PCR fragment analysis
- Restriction digest analysis
- DNA fingerprinting
- Northern and Southern blotting
- Microsatellite analysis
- Cosmid library restriction analysis
- RFLP analysis
- RAPD analysis

* Purchase separately for ReadySub-Cell GT systems.

** Patent pending.

Sub-Cell Essentials for the Total Solution

Reload With ReadyAgarose Precast Gels

Sample separation has never been easier. ReadyAgarose gels are a complete line of individually packaged precast agarose gels. The UV-transparent tray that holds each gel locks into Mini-Sub cell and wide Mini-Sub cell systems. These gels have been specifically designed to ensure handcast performance from precast gels. Choose from over 27 gel types that provide resolution of nucleic acids from 20 to 20,000 bp.

Quantitation

Bio-Rad has a line of affordable quantitation instruments to suit your needs. Choose the affordable SmartSpec™ Plus spectrophotometer for fast, accurate quantitation of nucleic acids. Choose the flexible VersaFluor™ fluorometer for more sensitive nucleic acid quantitation.

Power Your Sub-Cell System With the PowerPac™ Basic Power Supply

Four sets of output terminals deliver constant voltage or current with maximum outputs of 300 V, 400 mA, and 75 W. Both continuous and timed runs are easily programmed with a user-friendly interface, and the unit is lightweight and stackable. In addition, the vertical display is easily visible from shelf or bench level.



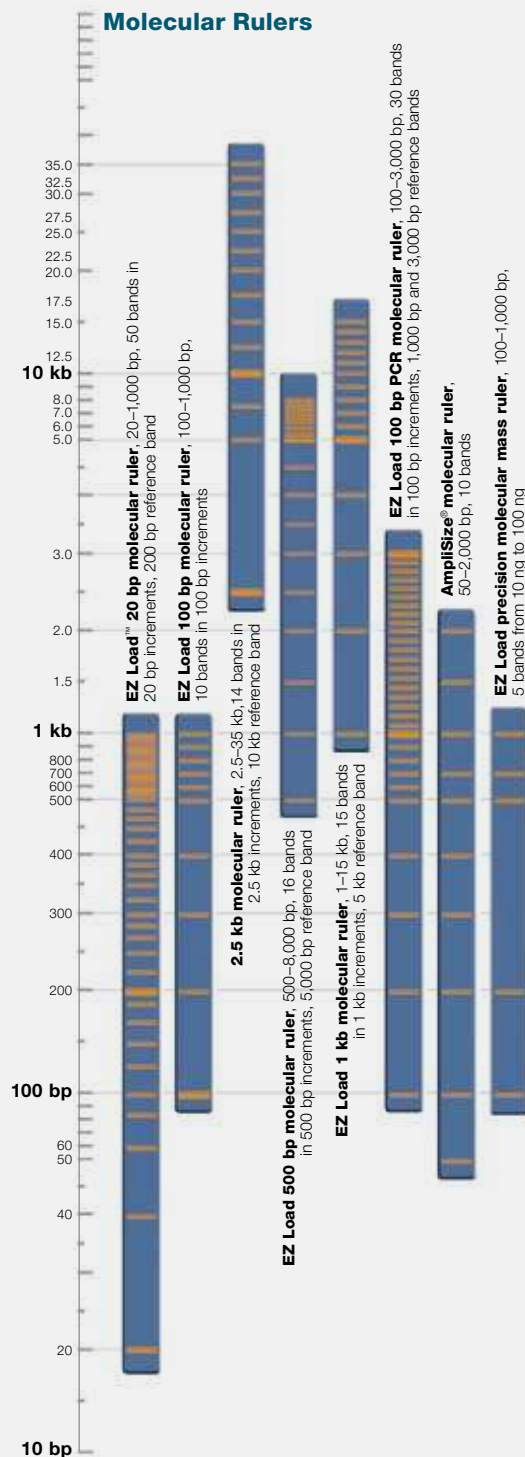
Handcasting Reagents, Buffers, and Fluorescent Stains

Bio-Rad maintains a complete line of quality reagents for preparing custom handcast gels. From powdered agarose to premixed buffer solutions, Bio-Rad has it all.

Complete your nucleic acid electrophoresis analysis by using ethidium bromide solution to visualize DNA.



Molecular Rulers



Ordering Information

| Catalog # | Description |
|--|--|
| Sub-Cell GT Systems* | |
| 170-4406 | Mini-Sub Cell GT System, with 7 x 7 cm tray |
| 170-4466 | Mini-Sub Cell GT System, with 7 x 10 cm tray |
| 170-4486 | Mini-Sub Cell GT System, with 7 x 7 cm tray, mini-gel caster |
| 170-4467 | Mini-Sub Cell GT System, with 7 x 10 cm tray, mini-gel caster |
| 170-4487 | Mini ReadySub-Cell GT System, includes buffer tank, lid with cables, leveling bubble |
| 170-4405 | Wide Mini-Sub Cell GT System, with 15 x 7 cm tray |
| 170-4468 | Wide Mini-Sub Cell GT System, with 15 x 10 cm tray |
| 170-4485 | Wide Mini-Sub Cell GT System, with 15 x 7 cm tray, mini-gel caster |
| 170-4469 | Wide Mini-Sub Cell GT System, with 15 x 10 cm tray, mini-gel caster |
| 170-4489 | Wide Mini ReadySub-Cell GT System, includes buffer tank, lid with cables, leveling bubble |
| 170-4401 | Sub-Cell GT System, with 15 x 10 cm tray |
| 170-4402 | Sub-Cell GT System, with 15 x 15 cm tray |
| 170-4403 | Sub-Cell GT System, with 15 x 20 cm tray |
| 170-4404 | Sub-Cell GT System, with 15 x 25 cm tray |
| 170-4481 | Sub-Cell GT System, with 15 x 10 cm tray, gel caster |
| 170-4482 | Sub-Cell GT System, with 15 x 15 cm tray, gel caster |
| 170-4483 | Sub-Cell GT System, with 15 x 20 cm tray, gel caster |
| 170-4484 | Sub-Cell GT System, with 15 x 25 cm tray, gel caster |
| Sub-Cell GT/PowerPac Basic Power Supply Systems** | |
| 164-0300 | Mini-Sub Cell GT/PowerPac Basic System, 100/120 V |
| 164-0301 | Wide Mini-Sub Cell GT/PowerPac Basic System, 100/120 V |
| 164-0302 | Sub-Cell GT/PowerPac Basic System, 100/120 V |
| Upgrade Kits*** | |
| 170-4491 | Mini Handcasting Kit |
| 170-4497 | Wide Mini Handcasting Kit |
| Quantitation | |
| 170-2525 | SmartSpec Plus Spectrophotometer |
| 170-2402 | VersaFluor Fluorometer, 100/120/220 V, includes 1 standard cuvette holder, 100 standard cuvettes, and choice of 1 excitation and 1 emission filter |
| Imaging Instruments | |
| 170-8190 | Molecular Imager® Gel Doc™ XR+ System, PC and Mac |
| 170-8251 | Molecular Imager® ChemiDoc™ XRS+ System, PC |
| 170-8252 | Molecular Imager ChemiDoc XRS+ System, Mac |

| Catalog # | Description |
|--|--|
| Sub-Cell Model 96 and 192 Systems† | |
| 170-4502 | Sub-Cell Model 96 Cell, with 25 x 10 cm tray |
| 170-4503 | Sub-Cell Model 96 Cell, with 25 x 15 cm tray |
| 170-4500 | Sub-Cell Model 96 Cell, with 25 x 10 cm tray, gel caster |
| 170-4501 | Sub-Cell Model 96 Cell, with 25 x 15 cm tray, gel caster |
| 170-4508 | Sub-Cell Model 192 Cell, with 25 x 10 cm tray |
| 170-4509 | Sub-Cell Model 192 Cell, with 25 x 15 cm tray |
| 170-4510 | Sub-Cell Model 192 Cell, with 25 x 20 cm tray |
| 170-4511 | Sub-Cell Model 192 Cell, with 25 x 25 cm tray |
| 170-4504 | Sub-Cell Model 192 Cell, with 25 x 10 cm tray, gel caster |
| 170-4505 | Sub-Cell Model 192 Cell, with 25 x 15 cm tray, gel caster |
| 170-4506 | Sub-Cell Model 192 Cell, with 25 x 20 cm tray, gel caster |
| 170-4507 | Sub-Cell Model 192 Cell, with 25 x 25 cm tray, gel caster |
| Sub-Cell Model 96 and 192/PowerPac Basic Power Supply Systems†† | |
| 164-0305 | Sub-Cell Model 96/PowerPac Basic System, 100/120 V |
| 164-0306 | Sub-Cell Model 192/PowerPac Basic System, 100/120 V |
| DNA Size Standards | |
| 170-8351 | EZ Load 20 bp Molecular Ruler, 20–1,000 bp, 100 applications |
| 170-8352 | EZ Load 100 bp Molecular Ruler, 100–1,000 bp, 100 applications |
| 170-8353 | EZ Load 100 bp PCR Molecular Ruler, 100–3,000 bp, 100 applications |
| 170-8354 | EZ Load 500 bp Molecular Ruler, 500–8,000 bp, 100 applications |
| 170-8355 | EZ Load 1 kb Molecular Ruler, 1–15 kb, 100 applications |
| 170-8356 | EZ Load Precision Molecular Mass Ruler, 100–1,000 bp, 100 applications |
| 170-8200 | AmpliSize Molecular Ruler, 50–2,000 bp, 50 applications |
| 170-8205 | 2.5 kb Molecular Ruler, 2.5–35 kb, 100 applications |
| Fluorescent Stains | |
| 161-0433 | Ethidium Bromide Solution, 10 mg/ml, 10 ml |
| Premixed Buffers | |
| 161-0733 | 10x TBE, 1 L |
| 161-0770 | 10x TBE, 5 L cube |
| 161-0743 | 50x TAE, 1 L |
| 161-0773 | 50x TAE, 5 L cube |

* All Sub-Cell GT systems include a buffer tank, a safety lid with cables, a leveling bubble, casting gates, and two 1.5 mm thick fixed-height combs: 15- and 20-well combs for Sub-Cell and wide Mini-Sub cell, 8- and 15-well combs for Mini-Sub cell.

** All Sub-Cell GT/PowerPac Basic systems include the same accessories listed above and a gel caster.

*** Handcasting kits can be purchased to upgrade ReadySub-Cell systems to Mini-Sub or wide Mini-Sub cell systems. The kits include casting gates and 1.5 mm thick 8- and 15-well combs for mini ReadySub-Cell models or 15- and 20-well combs for wide mini ReadySub-Cell models.

† All Sub-Cell Model 96 and 192 systems include a buffer tank, a safety lid with cables, a leveling bubble, casting gates, and a 51-well, 1.5 mm thick comb.

†† All Sub-Cell Model 96 and 192/PowerPac Basic systems include a gel caster and 25 x 10 cm tray (Model 96) or 25 x 15 cm tray (Model 192).

| | ReadyAgarose Mini Gels | | | ReadyAgarose Wide Mini Gels | | | |
|--------------------------|------------------------|--------------------|-----------------------|-----------------------------|--------------------|------------------------|------------------------|
| | 8-Well (20 µl) | 12-Well (10 µl) | 2 x 8-Well (20 µl) | 20-Well (20 µl) | 32-Well (15 µl) | 2 x 32-Well (15 µl) | 4 x 26-Well (15 µl) |
| TBE Gels | | | | | | | |
| 1% plus ethidium bromide | 161-3004 | 161-3010 | — | 161-3028 | 161-3034 | 161-3038 | 161-3060 |
| 3% plus ethidium bromide | 161-3006 | 161-3012 | — | 161-3030 | 161-3036 | 161-3040 | 161-3062 |
| TAE Gels | | | | | | | |
| 1% | 161-3015 | — | 161-3057 | — | — | — | — |
| 1% plus ethidium bromide | 161-3016 | 161-3022 | — | 161-3044 | 161-3050 | 161-3054 | 161-3063 |
| 3% | 161-3017 | — | — | — | — | — | — |
| 3% plus ethidium bromide | 161-3018 | 161-3024 | — | 161-3046 | 161-3052 | 161-3056 | 161-3065 |

Gel shelf life at room temperature: 12 months without ethidium bromide, 6 months with ethidium bromide.

For more information, go to www.bio-rad.com/horizontalelectro/, contact your local Bio-Rad representative, or call 1-800-4BIORAD (1-800-424-6723). Visit us on the Web at discover.bio-rad.com.

Practice of the patented polymerase chain reaction (PCR) process requires a license.



**Bio-Rad
Laboratories, Inc.**

Life Science
Group

Web site www.bio-rad.com USA 800 4BIORAD Australia 61 02 9914 2800 Austria 01 877 89 01 Belgium 09 385 55 11 Brazil 55 21 3237 9400
Canada 905 364 3435 China 86 21 6426 0808 Czech Republic 420 241 430 532 Denmark 44 52 10 00 Finland 09 804 22 00 France 01 47 95 69 65
Germany 089 318 84 0 Greece 30 210 777 4396 Hong Kong 852 2789 3300 Hungary 36 1 455 8800 India 91 124 4029300 Israel 03 963 6050
Italy 39 02 216091 Japan 03 6361 7000 Korea 82 2 3473 4460 Mexico 52 555 488 7670 The Netherlands 0318 540666 New Zealand 0508 805 500
Norway 23 38 41 30 Poland 48 22 331 99 99 Portugal 351 21 472 7700 Russia 7 495 721 14 04 Singapore 65 6415 3188 South Africa 27 861 246 723
Spain 34 91 590 5200 Sweden 08 555 12700 Switzerland 061 717 95 55 Taiwan 886 2 2578 7189 United Kingdom 020 8328 2000



Artisan Technology Group is your source for quality new and certified-used/pre-owned equipment

- FAST SHIPPING AND DELIVERY
- TENS OF THOUSANDS OF IN-STOCK ITEMS
- EQUIPMENT DEMOS
- HUNDREDS OF MANUFACTURERS SUPPORTED
- LEASING/MONTHLY RENTALS
- ITAR CERTIFIED SECURE ASSET SOLUTIONS

SERVICE CENTER REPAIRS

Experienced engineers and technicians on staff at our full-service, in-house repair center

*InstraView*SM REMOTE INSPECTION

Remotely inspect equipment before purchasing with our interactive website at www.instraview.com ↗

WE BUY USED EQUIPMENT

Sell your excess, underutilized, and idle used equipment. We also offer credit for buy-backs and trade-ins. www.artisanng.com/WeBuyEquipment ↗

LOOKING FOR MORE INFORMATION?

Visit us on the web at www.artisanng.com ↗ for more information on price quotations, drivers, technical specifications, manuals, and documentation

Contact us: (888) 88-SOURCE | sales@artisanng.com | www.artisanng.com