



## Artisan Technology Group is your source for quality new and certified-used/pre-owned equipment

- FAST SHIPPING AND DELIVERY
- TENS OF THOUSANDS OF IN-STOCK ITEMS
- EQUIPMENT DEMOS
- HUNDREDS OF MANUFACTURERS SUPPORTED
- LEASING/MONTHLY RENTALS
- ITAR CERTIFIED SECURE ASSET SOLUTIONS

### SERVICE CENTER REPAIRS

Experienced engineers and technicians on staff at our full-service, in-house repair center

### *InstraView*<sup>SM</sup> REMOTE INSPECTION

Remotely inspect equipment before purchasing with our interactive website at [www.instraview.com](http://www.instraview.com) ↗

### WE BUY USED EQUIPMENT

Sell your excess, underutilized, and idle used equipment. We also offer credit for buy-backs and trade-ins. [www.artisanng.com/WeBuyEquipment](http://www.artisanng.com/WeBuyEquipment) ↗

### LOOKING FOR MORE INFORMATION?

Visit us on the web at [www.artisanng.com](http://www.artisanng.com) ↗ for more information on price quotations, drivers, technical specifications, manuals, and documentation

**Contact us:** (888) 88-SOURCE | [sales@artisanng.com](mailto:sales@artisanng.com) | [www.artisanng.com](http://www.artisanng.com)



## 2/2 or 3/2-way Solenoid Valve for aggressive media, G 1/4

- Pivoted armature valve with manual override
- Direct-acting with separating diaphragm
- Different circuit function available
- Suitable for aggressive media
- Plastic body in PP or PVDF

Type 0124 can be combined with...



**Type 2508**

Cable plug

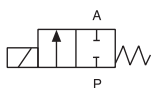


**Type 1078**

Timer unit

The Type 0124 is a direct-acting 2/2 or 3/2-way pivoted armature solenoid valve. Deliverable in many circuit functions for opening, closing, dosing, mixing and distribution. The magnetic system and the media chamber are separated from one another by a separating diaphragm system.

### Circuit function A



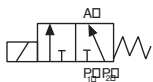
2/2-way valve NC

### Circuit function C



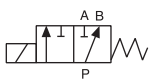
3/2-way valve NC

### Circuit function E



3/2-way mixer valve

### Circuit function F



3/2-way distribution valve

Technical data	
<b>Orifice</b>	DN 3.0 - 5.0 mm
<b>Body and seat material</b>	PP, PVDF
<b>Coil material</b>	Epoxy
<b>Coil insulation class</b>	H
<b>Seal material</b>	EPDM, FKM NBR and FFKM on request
<b>Media</b>	EPDM FKM
	Alkalis, acids up to medium concentrations, alkaline washing and bleaching lyes, Oxidising acids and substances, oils, salt solutions, waste gases
<b>Media temperature</b>	EPDM FKM
	- 30 to +80 °C 0 to +80 °C
<b>Ambient temperature</b>	Max. +55 °C
<b>Voltage tolerance</b>	±10%
<b>Duty cycle</b>	Intermittent operation Continuous operation
	40% ED (30 min) with 8 W version 100% ED with 5 W version (on request)
<b>Electrical connection</b>	Tag connector acc. to DIN EN 175301-803 Form A (previously DIN 43650) for cable plug Type 2508 (supplied as standard)
<b>Protection class</b>	IP 65 with cable plug
<b>Installation</b>	As required, preferably with actuator upright

Technical data

Inrush	Hold	warm/cold	Weight
AC [VA]	AC [VA/W]	DC [W]	kg
30	15/8	8/11	0,4

Orifice [mm]	Response times			
	AC		DC	
	Opening [ms]	Closing [ms]	Opening [ms]	Closing [ms]
2-4	8-15	8-15	10-20	10-20

The springs of each valve are set up for a specific circuit function.  
When using them in other circuit functions, the permissible operating pressure changes according to the following table.

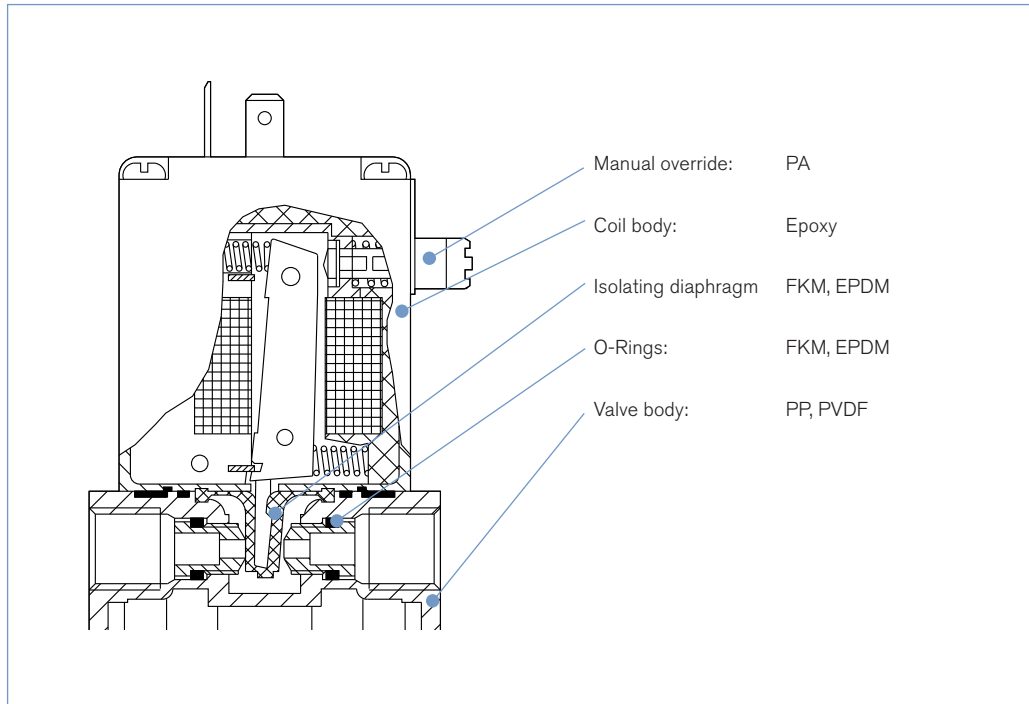
**Response times [ms]:**

Measured at valve outlet at 6 bar and +20 °C

**Opening:** pressure build-up 0 to 90%, **closing:** pressure relief 100 to 10%

Circuit function	Max. operating pressure [bar] when using the valve in a new circuit function											
	Orifice 3.0						Orifice 4.0					
	A	B	C	D	E	F	A	B	C	D	E	F
<b>C</b>	10	1	10	1	1	10	5	0,8	5	0,8	0,8	5
<b>D</b>	6	6	6	6	6	3	3	3	3	3	3	3
<b>F</b>	5	1	6	1	1	10	4	1	4	1	1	4

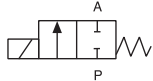
Materials



Ordering chart for valves (other versions on request)

Circuit function	Port connection	Orifice [mm]	Kv value water [m <sup>3</sup> /h]	Pressure range [bar]	Voltage/frequency [V/Hz]	Item no. Seal material FKM	Item no. Seal material EPDM	
<b>All valves body material PP, manual override and cable plug, different seal materials</b>								
<b>A</b>	G 1/4	3.0	0.25	0 - 8	024/DC	018 410	067 214	
				0 - 10	24/50	088 496	022 105	
					230/50	045 653	062 398	
				0 - 4	024/DC	062 695	021 660	
				0 - 5	024/50	043 005	067 731	
					110/50	087 029	-	
					230/50	063 116	063 118	
	G 1/4	5.0	0.40	0 - 3	024/DC	062 624	061 321	
				0 - 4.5	024/50	067 007	054 261	
					110/50	-	088 468	
					230/50	022 619	049 969	
	<b>C</b>	G 1/4	4.0	0.30	0 - 5	024/50	088 420	-
					230/50	-	063 625	
<b>E</b>	G 1/4	3.0	0.25	0 - 4	024/DC	069 917	078 556	
				0 - 6	024/50	066 230	-	
					230/50	022 294	078 559	
				0 - 2	024/DC	061 077	067 160	
				0 - 3	024/50	086 921	044 693	
					230/50	053 406	066 033	
<b>F</b>	G 1/4	4.0	0.30	0 - 4	024/DC	020 528	-	
				0 - 5	230/50	-	066 032	
<b>All valves with body material PVDF, manual override and cable plug, seal material FKM</b>								
<b>A</b>	G 1/4	3.0	0.25	0 - 8	024/DC	018 188	-	
				0 - 10	024/50	020 286	-	
					110/50	078 784	-	
					230/50	069 006	-	
				0 - 4	024/DC	023 472	-	
				0 - 5	024/50	069 079	-	
					230/50	087 837	-	
	G 1/4	4.0	0.30	0 - 3	024/DC	064 512	-	
				0 - 4.5	230/50	063 786	-	
	<b>C</b>	G 1/4	4.0	0.30	0 - 4	024/DC	055 788	-
					0 - 5	230/50	019 078	-
<b>E</b>	G 1/4	4.0	0.30	0 - 2	024/DC	022 340	-	
				0 - 3	024/50	020 550	-	
					230/50	085 599	-	

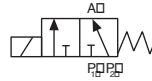
**A** 2/2-way valve NC



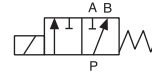
**C** 3/2-way valve NC



**E** 3/2-way mixer valve



**F** 3/2-way distribution valve



**i Further versions on request**

**Approvals**  
UR, CSA, ATEX

**Voltage**  
Non-standard voltages

**Pressure**  
Vacuum version

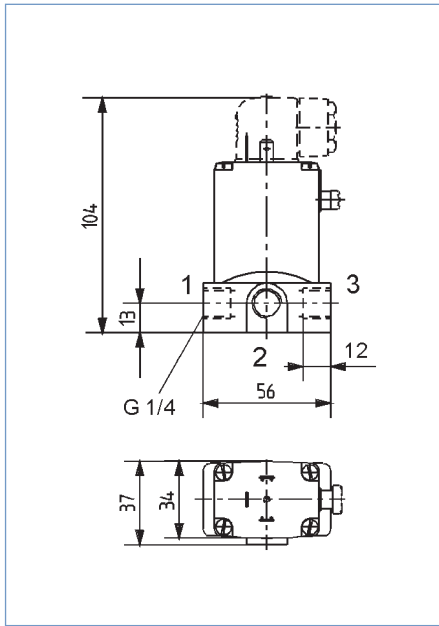
**Port Connection**  
NPT 1/4, sub-base

**Materials**  
Seal material - FFKM

**Additional**  
Optical or electrical feedback

DTS 1000010905 EN Version: D Status: RL (released | freigegeben | valide) printed: 27.07.2010

## Dimensions [mm]



The ports are marked with 1, 2 and 3 as indicated in the configuration table, depending on the circuit function.

## Possible port configurations

Circuit function	1	2	3
A <sup>1)</sup>	A	-	P
C	P	A	R
E	P1	A	P2
F	A	P	B

<sup>1)</sup> Type 0124 has no middle connection in circuit function A.

To find your nearest Bürkert facility, click on the orange box →

[www.burkert.com](http://www.burkert.com)

In case of special application conditions,  
please consult for advice.

Subject to alterations  
© Christian Bürkert GmbH & Co. KG

0710/3\_EU\_en\_00891602



## Artisan Technology Group is your source for quality new and certified-used/pre-owned equipment

- FAST SHIPPING AND DELIVERY
- TENS OF THOUSANDS OF IN-STOCK ITEMS
- EQUIPMENT DEMOS
- HUNDREDS OF MANUFACTURERS SUPPORTED
- LEASING/MONTHLY RENTALS
- ITAR CERTIFIED SECURE ASSET SOLUTIONS

### SERVICE CENTER REPAIRS

Experienced engineers and technicians on staff at our full-service, in-house repair center

### *InstraView*<sup>SM</sup> REMOTE INSPECTION

Remotely inspect equipment before purchasing with our interactive website at [www.instraview.com](http://www.instraview.com) ↗

### WE BUY USED EQUIPMENT

Sell your excess, underutilized, and idle used equipment. We also offer credit for buy-backs and trade-ins. [www.artisanng.com/WeBuyEquipment](http://www.artisanng.com/WeBuyEquipment) ↗

### LOOKING FOR MORE INFORMATION?

Visit us on the web at [www.artisanng.com](http://www.artisanng.com) ↗ for more information on price quotations, drivers, technical specifications, manuals, and documentation

**Contact us:** (888) 88-SOURCE | [sales@artisanng.com](mailto:sales@artisanng.com) | [www.artisanng.com](http://www.artisanng.com)