



Artisan Technology Group is your source for quality new and certified-used/pre-owned equipment

- FAST SHIPPING AND DELIVERY
- TENS OF THOUSANDS OF IN-STOCK ITEMS
- EQUIPMENT DEMOS
- HUNDREDS OF MANUFACTURERS SUPPORTED
- LEASING/MONTHLY RENTALS
- ITAR CERTIFIED SECURE ASSET SOLUTIONS

SERVICE CENTER REPAIRS

Experienced engineers and technicians on staff at our full-service, in-house repair center

*InstraView*SM REMOTE INSPECTION

Remotely inspect equipment before purchasing with our interactive website at www.instraview.com ↗

WE BUY USED EQUIPMENT

Sell your excess, underutilized, and idle used equipment. We also offer credit for buy-backs and trade-ins. www.artisanng.com/WeBuyEquipment ↗

LOOKING FOR MORE INFORMATION?

Visit us on the web at www.artisanng.com ↗ for more information on price quotations, drivers, technical specifications, manuals, and documentation

Contact us: (888) 88-SOURCE | sales@artisanng.com | www.artisanng.com

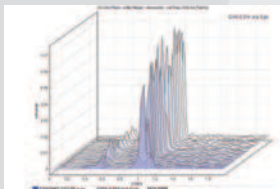
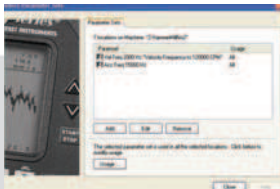
vb1000v™



ECONOMICAL, EASY-TO-OPERATE ADVANCED VIBRATION DATA COLLECTOR, ANALYZER AND SOFTWARE

The **vb1000v** is a single-channel route-enabled product that provides everything you need for route-based data collection and analysis, including the powerful **Ascent®** software, all included in the purchase price.

Ascent Level 1 enables you to program the **vb** instrument with up to 780 separate machine definitions covering up to 240 different route choices. A library of over 200 customizable parameter sets is also available enabling a vast array of measurement options.



- **Ascent** Level 1 Software
- Route enabled – build routes in Ascent and send to the **vb** instrument
- CBDb – Commtest Bearing Database with over 30,000 bearings
- Single-channel operation
- One accelerometer – included in the purchase price
- Laser speed sensor – for automatic capture of machine running speed
- 8 MB memory – store up to 8000 spectra in the **vb** instrument
- 95 dB Dynamic Range
- 20 kHz Fmax
- 3200 Line FFT capability
- "Commtest Care" including 5 year warranty on the **vb** instrument

On-site printing requires the purchase of an optional thermal printer. Please see your local Commtest reseller for details.

supplied with **Ascent** software



commtest

SPECIFICATIONS	MODEL vb1000v	REMARKS
Accelerometer Input		
Number of channels	1	
Type	2-wire, low impedance piezoelectric	Commonly termed 'ICP® type'
Sensitivity	100 mV/g nominal	Calibration adjustable [8.5 to 2300] mV/g
Connector	BNC	Safety feature: break-free inline connector
Input impedance	500 kΩ	
Voltage swing	18 V peak-to-peak	AC coupled input, allows for ± 8 V sensor output swing (± 80 g)
Sensor excitation current	0 mA or 2.2 mA (configurable)	2.2 mA required for ICP® type accelerometer
Sensor excitation voltage	24 V maximum	at sensor terminals with sensor attached
Tachometer Input		
Sensor	Laser sensor with reflective tape included in kit	Sensor triggers when the tape reflects its beam
Laser sensor range	10 cm to 2 m nominal	Dependent on size of reflective tape
Sensor supply	7.2 nominal [6.0 to 9.5] V instrument battery	Available to power sensor. Protected by 0.1 A PTC
Input type	Optically isolated, accepts TTL pulse	
Pulse rating	2.5 V [4 mA] min, 10 V [27 mA] max, off-state < 0.8 V	Triggers on positive edge
Speed range	[30 to 65 000] RPM [0.5 Hz to 1.08 kHz]	
Parameter Indication		
Displays	Acceleration, velocity, displacement, demodulation	User selectable
Maximum levels	± 80 g [800 m/s ²], ± 4 in/sec [100 mm/s] ± 400 mil [10 mm]	Zero-to-peak. Approximate, dependent on individual calibration
Dynamic signal range	95 dB or greater (typical at 400 line resolution)	Acceleration and velocity. Greater with higher resolution and averaging
Harmonic distortion	Less than -70 dB typical	Dependent on input level and type. Other distortions and noise are lower
Display ranges	60 dB or 120 dB visible range with manual shift	
Units	g or m/s ² , in/s or mm/s, mil or mm or μm	Zero-to-peak, peak-to-peak or rms
	AdB, VdB	AdB ref. 1 μg rms, VdB ref. configurable [1.0e-5 or 1.0e-6 mm/s rms]
Graph types	Spectrum [freq domain], waveform [time domain]	Solid histogram for spectrum, line graph for waveform
Magnitude display	Overall rms value, cursor-position value	Digital readout on graph
Cursors	Standard cursor	Vary x position to display x and y values
	Dual cursors	Lock standard cursor as reference and display difference
	Harmonic cursor	Up to 32 whole-number multiples of standard-cursor frequency
Accuracy	± 1% [0.1 dB]	Measured at 100 Hz, 23 ± 5 °C, 400 lines, 400 Hz range
Frequency response	± 0.2 dB from 10 Hz to 5 kHz; ± 0.5 dB from 3 Hz to 20 kHz	From value measured at 100 Hz
Spectrum Display		
Fmax possible ranges	0 to [100, 125, 200, 300, 400, 500, 600, 800] Hz 0 to [1, 1.2, 1.6, 2, 2.5, 3, 4, 5, 6, 8, 10, 15, 20] kHz	Or equivalent CPM values Or orders-based from 1X to 30 000X
Fmin possible range	0 to Fmax	vb zeroes all spectral lines below Fmin
Resolution	400, 800, 1600, 3200 lines (configurable)	1600 lines maximum if tachometer or more than 50% overlap used. 800 lines maximum for dual channel measurements. Can zoom in to display individual spectral lines
Frequency scale	Hz, CPM	
y axis	Acceleration, velocity or displacement	
Window shapes	Hanning, rectangular	
Overlap	0, 12.5, 25, 37.5, 50, 62.5, 75, 87.5%	
Number of averages	1, 2, 4, 8, 16, 32, 64, 128	Dependent on frequency range
Averaging types	Linear, exponential, peak hold, synchronous	Increases sampling time proportionally
Demod bandwidths	20 bandwidth options	From [125 to 1250] Hz up to [16 to 20] kHz
Tachometer Display		
Displays	RPM, Hz, 1X amplitude and phase angle	For selected amplitude type, phase angle in degrees
Range	30 RPM [0.5 Hz] to 65 000 RPM [1.08 kHz]	
Time Intervals		
	LINES	
	Range	400 800 1600 3200
Sampling time in seconds	[0 to 100] Hz	4 8 16 32
(example ranges)	[0 to 800] Hz	0.5 1 2 4
	[0 to 4] kHz	0.1 0.2 0.4 0.8
	[0 to 20] kHz	0.02 0.04 0.08 0.16
Typical measure and record	5 s for 1600 lines, 1600 Hz, 8 averages, 50% overlap	Not including initial startup and settling time
Trigger Modes	Single (key press), free run	Trigger status displayed [busy, done, run, stop]
Logging Features		
Output formats	vb screen, transfer to Ascent PC-based software	
Data storage	8.5 MB non-volatile	Total of 8000 spectra at 400-line resolution or 1000 spectra at 3200-line resolution
Data storage format	Up to 30 folders Up to 200 named machines per folder Up to 780 named machines for all folders Up to 30 multi-axial points per machine Up to 8 routes per folder	User-specified machine, point, and axis names (16 characters) entered from PC or keypad. Each recording has a unique time/date stamp
Display		
Resolution	Graphic LCD	
Viewing area	240 x 128 pixels	
Backlight	4.3" x 2.3" [110 x 60] mm	
	Electro-luminescent	
PROFLASH	Allows vb firmware to be upgraded via built-in serial port	Download firmware service packs via the Internet
Communications	RS232	15 kV ESD protected. Cable with DB9 connector.
Baud rate	57 600 bits per second	
Battery		
Type	Custom Nickel-Cadmium pack	
Voltage	7.2 V nominal	
Capacity	1500 mAh nominal	
Operating time (typical)	9 hours with backlight off, 6 hours with backlight on	Depends on mode and setup
Charger and Conditioner	Integral charger – automatic and manual control	Power transformer with [13.5 ± 1.5] V DC, 1 A output included in kit.
Charge rate	0.7 A nominal	2.5 hours for complete charge nominal
Discharge rate	0.5 A nominal	Combats NiCad battery memory effect
Mechanical		
Size	9.7" W x 6.1" L x 3.0" H [247 x 154 x 75] mm	Including protective boot
Weight	4.4 lb [2 kg]	Including protective boot and strap
Environmental		
Temperature/Humidity		
Operating	(32 to 122) °F [0 to 50] °C 80% RH [32 to 86] °F 70% RH [86 to 122] °F	Non-condensing Non-condensing
Storage	(14 to 140) °F [-10 to 60] °C 95% RH	
EMC	EN50081-1 EN50082-1	Radiated and conducted emissions RF field, ESD and fast transient immunity



Artisan Technology Group is your source for quality new and certified-used/pre-owned equipment

- FAST SHIPPING AND DELIVERY
- TENS OF THOUSANDS OF IN-STOCK ITEMS
- EQUIPMENT DEMOS
- HUNDREDS OF MANUFACTURERS SUPPORTED
- LEASING/MONTHLY RENTALS
- ITAR CERTIFIED SECURE ASSET SOLUTIONS

SERVICE CENTER REPAIRS

Experienced engineers and technicians on staff at our full-service, in-house repair center

*InstraView*SM REMOTE INSPECTION

Remotely inspect equipment before purchasing with our interactive website at www.instraview.com ↗

WE BUY USED EQUIPMENT

Sell your excess, underutilized, and idle used equipment. We also offer credit for buy-backs and trade-ins. www.artisanng.com/WeBuyEquipment ↗

LOOKING FOR MORE INFORMATION?

Visit us on the web at www.artisanng.com ↗ for more information on price quotations, drivers, technical specifications, manuals, and documentation

Contact us: (888) 88-SOURCE | sales@artisanng.com | www.artisanng.com