



## Artisan Technology Group is your source for quality new and certified-used/pre-owned equipment

- FAST SHIPPING AND DELIVERY
- TENS OF THOUSANDS OF IN-STOCK ITEMS
- EQUIPMENT DEMOS
- HUNDREDS OF MANUFACTURERS SUPPORTED
- LEASING/MONTHLY RENTALS
- ITAR CERTIFIED SECURE ASSET SOLUTIONS

### SERVICE CENTER REPAIRS

Experienced engineers and technicians on staff at our full-service, in-house repair center

### *InstraView*<sup>SM</sup> REMOTE INSPECTION

Remotely inspect equipment before purchasing with our interactive website at [www.instraview.com](http://www.instraview.com) ↗

### WE BUY USED EQUIPMENT

Sell your excess, underutilized, and idle used equipment. We also offer credit for buy-backs and trade-ins. [www.artisanng.com/WeBuyEquipment](http://www.artisanng.com/WeBuyEquipment) ↗

### LOOKING FOR MORE INFORMATION?

Visit us on the web at [www.artisanng.com](http://www.artisanng.com) ↗ for more information on price quotations, drivers, technical specifications, manuals, and documentation

**Contact us:** (888) 88-SOURCE | [sales@artisanng.com](mailto:sales@artisanng.com) | [www.artisanng.com](http://www.artisanng.com)

# SWITCHES

## 1X2 PRISM SWITCH

Dicon's 1x2 Prism Switch provides channel selection between one input fiber and two output fibers. Actuated electrically and operating independently of data rate and signal format, the component uses a moving prism between fixed collimators. Dicon's 1x2 Prism Switch can be built with Corning SMF-28, Flexcor 1060 or Polarization Maintaining Panda fiber.



### FEATURES

- Ultra low insertion loss
- Built in position sensor
- Flexible fiber types and wavelength ranges

### APPLICATIONS

- 1x2 Prism Switches with Corning SMF-28 fiber can be used for protection switching or in reconfigurable optical add/drop multiplexing modules.
- 1x2 Prism Switches with Panda fiber can be used to switch light sources which use polarization maintaining fiber pigtail.
- 1x2 Prism Switches with Flexcor 1060 fiber can be used to switch between different 980 nm pump laser sources.



Specifications subject to change. Copyright ©2002 Dicon Fiber Optics, Inc. All rights reserved.

### SPECIFICATIONS<sup>1,2,3</sup>

Insertion loss	0.6 dB typ., 1.0 dB max.
Switching time	10 ms typ.
Crosstalk	-70 dB max.
Extinction ratio <sup>3</sup>	18 dB min.
Durability	10 million cycles min.
Repeatability <sup>4</sup>	±0.02 dB max.
PD <sup>5</sup>	0.05 dB max.
Optical power <sup>6</sup>	300 mWatt max.
Switching voltage	4.5 VDC min., 6.0 VDC max.
Switching current	Nonlatching 2-pin: 36 mA min., 48 mA max. Latching 2-pin: 65 mA min., 87 mA max. Latching 3-pin: 90 mA min., 120 mA max.
Coil resistance	Nonlatching 2-pin: 125±10% ohm Latching 2-pin: 69.5±10% ohm Latching 3-pin: 50±10% ohm
Back-reflection	-55 dB max.
Operating temperature	-20° C to +75° C
Storage temperature	-40° C to +85° C

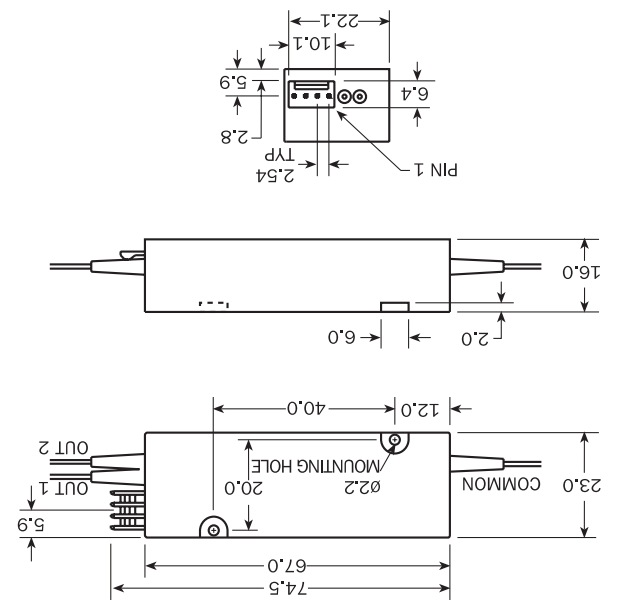
1. All specifications referenced without connectors.  
 2. Bottom-mount terminals available upon request.  
 3. Corning Panda PM 1300 fiber type only.  
 4. Repeatability for 100 cycles at constant temperature.  
 5. For SMF-28 fiber type only. Measured at 1550 nm.  
 6. High power option available by request.

### ACTUATION STYLE

Actuation Style	Switch Control				Position Sensor			
	Pin 1	Pin 2	Pin 3	Pin 4	Pin 1	Pin 2	Pin 3	Pin 4
Nonlatching 2-pin control. Requires no power to maintain one position and a constant +5 VDC across pins 1 and 2 to maintain the other position.	+5V	GND	GND	GND	+5V	+5V	+5V	+5V
Latching 2-pin control: Changes position when the polarity of the +5VDC signal to pins 1 and 2 is reversed. When no power is applied to pins 1 and 2, the switch is latched in place.	+5V	GND	+5V	GND	+5V	+5V	+5V	+5V
Latching 3-pin control: Pins 1, 2 and 3 are used for control. Pin 3 is a center tap. Position changes when pin 1 or pin 2 is held to ground. When no power is applied to pins 1 and 2, the switch is latched in place.	+5V	GND	+5V	GND	+5V	+5V	+5V	+5V
Position sensor: Sensor output is on pin 4, as either a normal open or closed contact (low or high signal), depending on the switch position. The position sensor is powered with +5 VDC on pin 3.	GND	+5V	GND	+5V	GND	+5V	GND	+5V

1. Switch position remains the same when power is removed.

### HOUSING DIMENSIONS

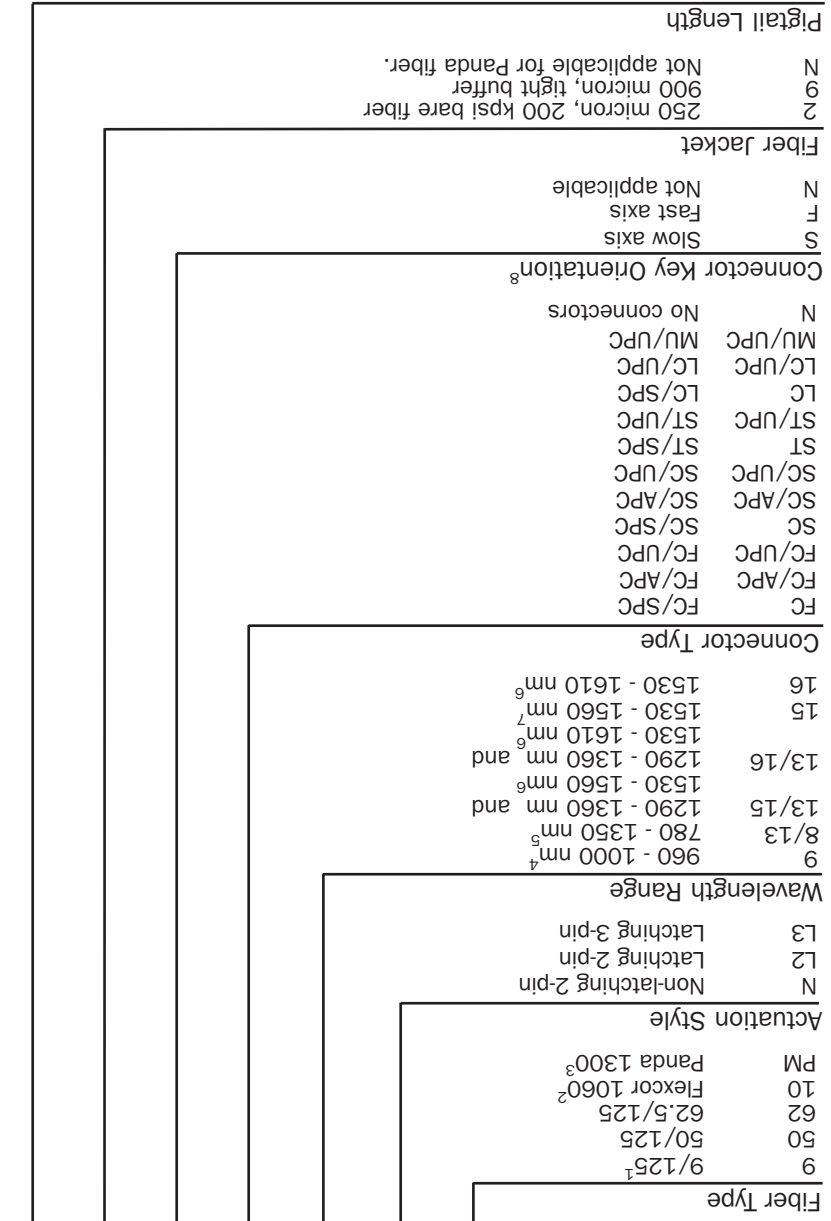


### SWITCHES

### 1X2 PRISM SWITCH

# SWITCHES

SP - 12 - - - - -



SWITCHES

1. Corning fiber SMF-28.
2. Corning Flexcor 1060 fiber with 250 um jacket.
3. Corning Panda PM 1300 fiber with 400 um jacket.
4. Flexcor only.
5. Multimode fiber only.
6. 9/125 fiber only.
7. 9/125 fiber and Panda 1300 fiber only.
8. Applicable to Corning PM 1300 with FC connectors only.

X Specify X meters  
1 meter



Specifications subject to change. Copyright ©2002 Dicon Fiber Optics, Inc. All rights reserved.

Dicon Fiber Optics, Inc. 1689 Regatta Blvd. Richmond, CA 94804 Tel. (510)620-5000 Fax. (510)620-4100 www.diconfiber.com



## Artisan Technology Group is your source for quality new and certified-used/pre-owned equipment

- FAST SHIPPING AND DELIVERY
- TENS OF THOUSANDS OF IN-STOCK ITEMS
- EQUIPMENT DEMOS
- HUNDREDS OF MANUFACTURERS SUPPORTED
- LEASING/MONTHLY RENTALS
- ITAR CERTIFIED SECURE ASSET SOLUTIONS

### SERVICE CENTER REPAIRS

Experienced engineers and technicians on staff at our full-service, in-house repair center

### *InstraView*<sup>SM</sup> REMOTE INSPECTION

Remotely inspect equipment before purchasing with our interactive website at [www.instraview.com](http://www.instraview.com) ↗

### WE BUY USED EQUIPMENT

Sell your excess, underutilized, and idle used equipment. We also offer credit for buy-backs and trade-ins. [www.artisanng.com/WeBuyEquipment](http://www.artisanng.com/WeBuyEquipment) ↗

### LOOKING FOR MORE INFORMATION?

Visit us on the web at [www.artisanng.com](http://www.artisanng.com) ↗ for more information on price quotations, drivers, technical specifications, manuals, and documentation

**Contact us:** (888) 88-SOURCE | [sales@artisanng.com](mailto:sales@artisanng.com) | [www.artisanng.com](http://www.artisanng.com)