



Artisan Technology Group is your source for quality new and certified-used/pre-owned equipment

- FAST SHIPPING AND DELIVERY
- TENS OF THOUSANDS OF IN-STOCK ITEMS
- EQUIPMENT DEMOS
- HUNDREDS OF MANUFACTURERS SUPPORTED
- LEASING/MONTHLY RENTALS
- ITAR CERTIFIED SECURE ASSET SOLUTIONS

SERVICE CENTER REPAIRS

Experienced engineers and technicians on staff at our full-service, in-house repair center

*InstraView*SM REMOTE INSPECTION

Remotely inspect equipment before purchasing with our interactive website at www.instraview.com ↗

WE BUY USED EQUIPMENT

Sell your excess, underutilized, and idle used equipment. We also offer credit for buy-backs and trade-ins. www.artisanng.com/WeBuyEquipment ↗

LOOKING FOR MORE INFORMATION?

Visit us on the web at www.artisanng.com ↗ for more information on price quotations, drivers, technical specifications, manuals, and documentation

Contact us: (888) 88-SOURCE | sales@artisanng.com | www.artisanng.com

SWITCHES

VX500 1XN SWITCH

Dicon's VX500 1XN Switch offers accurate connection of one or two input fiber channels to a maximum of 50 output fiber channels. The 1XN switch is available in simplex and duplex configurations. The VX500 1XN Switch is available in compact housings with 16, 32, or 50 maximum channels. The housings are designed for mounting on printed circuit boards or within enclosures. Dicon's VX500 1XN Switch can be built with Corning SMF-28, Flexcor 1060 or Polarization Maintaining Panda fiber.

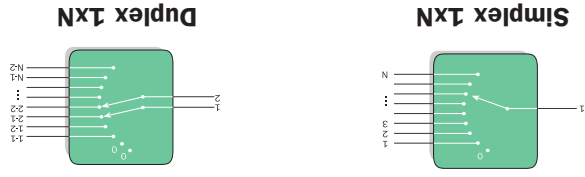


FEATURES

- Very low insertion loss
- Low back-reflection
- Compact housings with up to 50 channels
- Parallel TTL interface
- Flexible fiber types and wavelength ranges

APPLICATIONS

Applications for 1XN switches include component testing and measurement, remote fiber test systems, and fiber network monitoring.



Simplex 1xN switches have one input aligned to one of N outputs. The components switch in one-channel increments. Duplex 1xN switches have two inputs aligned to two outputs. They switch in two-channel increments.



U.S. patented. Specifications subject to change. Copyright ©2001 Dicon Fiber Optics, Inc. All rights reserved.

SWITCHES

SPECIFICATIONS¹

Insertion loss ²	0.6 dB typ., 1.0 dB max.
Back-reflection	singlemode -60 dB typ., -55 dB max. multimode -20 dB typ.
Repeatability ³	±0.02 dB max.
PDL ⁴	0.05 dB max.
Cross-talk	-80 dB max.
Extinction ratio ⁵	18 dB min.
Switching time	300ms+16ms per channel max.
Durability	10 million cycles min.
Power requirements	±12 VDC ±5% power in, 300 mA max.
Optical power ⁶	300 mW max.
Operating temperature	0°C to +50°C max.
Storage temperature	-20°C to +70°C
Humidity	40°C/90%RH/5 days

1. All specifications referenced without connectors.
 2. 1.2 dB max. for multiple wavelength ranges.
 3. Sequential repeatability for 100 cycles at constant temperature after warm-up.
 4. Singlemode only. Measured at 1550 nm.
 5. Corning Panda PM 1300 fiber type only.
 6. High power version (2W) available as special order.

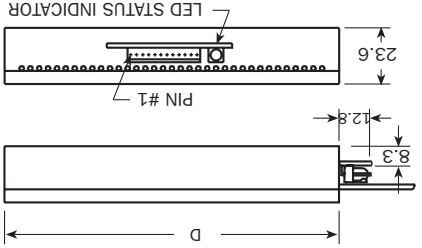
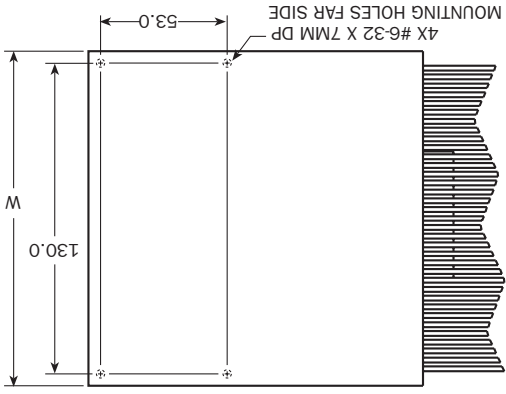
PIN ASSIGNMENTS

Pin Number	Signal Type	Description
1	Power	Signal Ground
2	Power	Power Ground
3	Input	Data bit 0
4	Input	Data bit 1
5	Input	Data bit 2
6	Input	Data bit 3
7	Input	Data bit 4
8	Input	Strobe
9	Output	Busy/ready status
10	Output	Error Status
11	Input	Reset
12	Power	+12 VDC power in

HOUSING DIMENSIONS

Chassis	Channel count	Width W	Height H	Depth D
#1	1 to 17 channels	72.0 mm	23.6 mm	120.0 mm
#2	18 to 32 channels	140.0 mm	23.6 mm	140.0 mm
#3	33 to 50 channels	190.0 mm	23.6 mm	175.0 mm

Chassis #2 and #3 (see VX500 2XN Switch for a drawing of chassis #1)



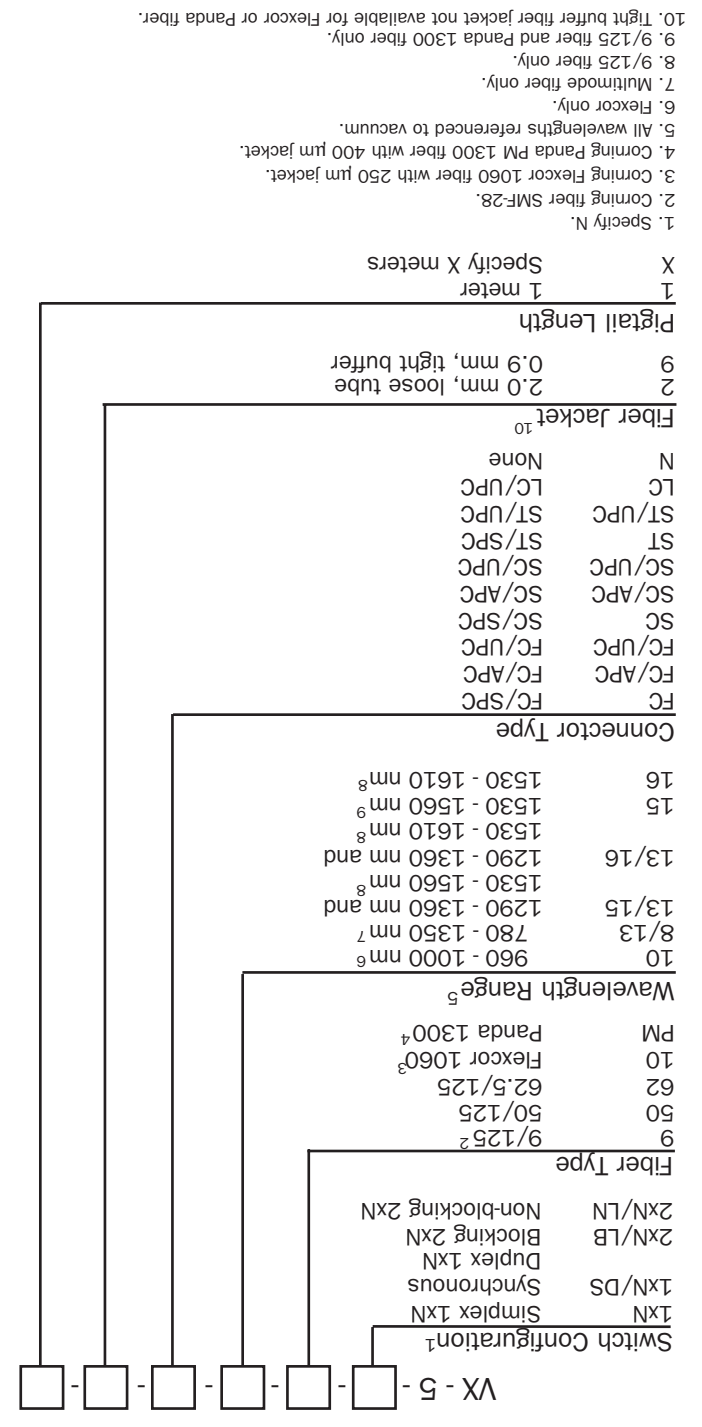
Units: mm
 Electrical connector is 12-pin right-angle header 22-01-3127 or equivalent.
 22-12-2124). Mate with Molex part number 22-01-3127 or equivalent.

Dicon Fiber Optics, Inc. 1689 Regatta Blvd. Richmond, CA 94804 Tel: (510)620-5000 Fax: (510)620-4100 www.diconfiber.com



Specifications subject to change. Copyright ©2001 Dicon Fiber Optics, Inc. All rights reserved.

Dicon Fiber Optics, Inc. 1689 Regatta Blvd. Richmond, CA 94804 Tel. (510)620-5000 Fax. (510)620-4100 www.diconfiber.com



1. Specify N.
2. Corning fiber SMF-28.
3. Corning Flexcor 1060 fiber with 250 μm jacket.
4. Corning Panda PM 1300 fiber with 400 μm jacket.
5. All wavelengths referenced to vacuum.
6. Flexcor only.
7. Multimode fiber only.
8. 9/125 fiber only.
9. 9/125 fiber and Panda 1300 fiber only.
10. Tight buffer fiber jacket not available for Flexcor or Panda fiber.

SWITCHES



Artisan Technology Group is your source for quality new and certified-used/pre-owned equipment

- FAST SHIPPING AND DELIVERY
- TENS OF THOUSANDS OF IN-STOCK ITEMS
- EQUIPMENT DEMOS
- HUNDREDS OF MANUFACTURERS SUPPORTED
- LEASING/MONTHLY RENTALS
- ITAR CERTIFIED SECURE ASSET SOLUTIONS

SERVICE CENTER REPAIRS

Experienced engineers and technicians on staff at our full-service, in-house repair center

*InstraView*SM REMOTE INSPECTION

Remotely inspect equipment before purchasing with our interactive website at www.instraview.com ↗

WE BUY USED EQUIPMENT

Sell your excess, underutilized, and idle used equipment. We also offer credit for buy-backs and trade-ins. www.artisanng.com/WeBuyEquipment ↗

LOOKING FOR MORE INFORMATION?

Visit us on the web at www.artisanng.com ↗ for more information on price quotations, drivers, technical specifications, manuals, and documentation

Contact us: (888) 88-SOURCE | sales@artisanng.com | www.artisanng.com