



## Artisan Technology Group is your source for quality new and certified-used/pre-owned equipment

- FAST SHIPPING AND DELIVERY
- TENS OF THOUSANDS OF IN-STOCK ITEMS
- EQUIPMENT DEMOS
- HUNDREDS OF MANUFACTURERS SUPPORTED
- LEASING/MONTHLY RENTALS
- ITAR CERTIFIED SECURE ASSET SOLUTIONS

### SERVICE CENTER REPAIRS

Experienced engineers and technicians on staff at our full-service, in-house repair center

### *InstraView*<sup>SM</sup> REMOTE INSPECTION

Remotely inspect equipment before purchasing with our interactive website at [www.instraview.com](http://www.instraview.com) ↗

### WE BUY USED EQUIPMENT

Sell your excess, underutilized, and idle used equipment. We also offer credit for buy-backs and trade-ins. [www.artisanng.com/WeBuyEquipment](http://www.artisanng.com/WeBuyEquipment) ↗

### LOOKING FOR MORE INFORMATION?

Visit us on the web at [www.artisanng.com](http://www.artisanng.com) ↗ for more information on price quotations, drivers, technical specifications, manuals, and documentation

**Contact us:** (888) 88-SOURCE | [sales@artisanng.com](mailto:sales@artisanng.com) | [www.artisanng.com](http://www.artisanng.com)

- Low power X86-based processor
  - National Semiconductor Geode processor
  - Proven 32-bit processor architecture
  - Highly integrated chipset
  - Less than 10 W total power dissipation typical
  - Ideal for embedded applications
- Standard features include
  - 333 MHz low power processor
  - Up to 256 MB PC-133 SDRAM
  - Integrated 2D graphics (maximum resolution of 1,280 x 1,024)
  - Fast Ethernet controller supporting 10BaseT and 100BaseTX interfaces
  - Ultra DMA/33 IDE and floppy drive interfaces
  - CompactFlash/Microdrive socket (up to 512 MB CompactFlash or up to 1 GB Microdrive)
  - One high performance 16550-compatible serial port (dual slot configuration only)
  - Enhanced parallel printer port with ECP/EPP
  - Two USB ports. One routed to backplane J2.
  - PS/2-style keyboard and mouse
- Real time features
  - Watchdog timer
  - Three 16-bit user-programmable timers
  - 32 KB of nonvolatile SRAM
  - Real time clock
- Operating system support
  - Windows NT®/Windows® 2000/Windows XP
  - Linux®

**MICROPROCESSOR** — The VMICPCI-7305 brings X86-based performance to a compact single board computer (SBC) that is ideal for embedded applications. The National Semiconductor Geode GX1 processor dissipates very little power, providing operation over a wide range of temperature and environmental conditions.

**DRAM MEMORY** — The VMICPCI-7305 is available in memory configurations from 32 to 512 MB PC-133 memory.

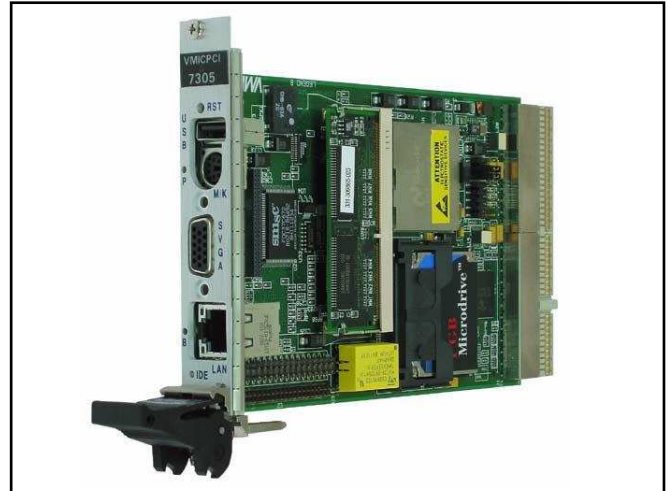
**BIOS** — The VMICPCI-7305 System BIOS and video BIOS are provided in reprogrammable memory.

**SVGA CONTROLLER** — Full function integrated 2D graphics accelerator provides pixel processing and rendering functions. The video output is provided through a standard SVGA connector on the front panel.

**Ethernet CONTROLLER** — The VMICPCI-7305 provides 10BaseT and 100BaseTX Ethernet through the 82551ER PCI Ethernet controller. A standard RJ45 connector is provided on the front panel with two network status indicators.

**CompactFlash** — The VMICPCI-7305 provides a CompactFlash card socket that will accommodate types 1 and 2 IDE-compatible devices. This includes flash disk modules up to 512 MB capacity or an IBM Microdrive hard disk up to 1 GB. In the dual slot configuration, only a type 1 CompactFlash card IDE-compatible device is available as an option on the daughter card.

**HARD DISK DRIVE** — The VMICPCI-7305 offers the option of an integrated 2.5-inch hard disk drive in the dual slot configuration. Either the hard disk or the CompactFlash device may be installed on the assembly, but not both.



**FLOPPY DISK DRIVE** — The VMICPCI-7305 provides a standard floppy disk drive interface through a header mounted on the board.

**SERIAL PORT** — The VMICPCI-7305 offers the option of one 16550-compatible serial port in the dual slot

Ordering Options						
Sept. 24, 2003 800-657305-000 F	A	B	C	–	D	E F
<b>VMICPCI-7305</b>	–			–		0
<b>A = Processor</b> 0 = Reserved 1 = Reserved 2 = Reserved 3 = 333 MHz Geode <b>B = SDRAM Memory</b> 1 = 32 MB 2 = 64 MB 3 = 128 MB 4 = 256 MB 5 = 512 MB <b>C = CompactFlash/Microdrive</b> 0 = None (Required for Dual Slot Configuration) 1 = 32 MB CompactFlash 2 = 64 MB CompactFlash 3 = 128 MB CompactFlash 4 = 256 MB CompactFlash 5 = 512 MB CompactFlash 6 = Reserved 7 = 1 GB Microdrive <b>D = Hard Drive/CompactFlash (Dual Slot Configuration)</b> 0 = No Second Slot 1 = Reserved 2 = 20 GB Hard Drive 3 = 30 GB Hard Drive 4 = Reserved 5 = 32 MB CompactFlash 6 = 64 MB CompactFlash 7 = 128 MB CompactFlash 8 = 256 MB CompactFlash 9 = 512 MB CompactFlash <b>E = Board Width Configuration</b> 0 = Single Slot Configuration (Option D = 0) 1 = Dual Slot Configuration with 1 Serial, 1 Parallel Port (Option C = 0)						
<b>For Ordering Information, Call:</b> 1-800-322-3616 or 1-256-880-0444 • FAX (256) 882-0859 E-mail: <a href="mailto:info@vmic.com">info@vmic.com</a> Web Address: <a href="http://www.vmic.com">www.vmic.com</a> Copyright © 2003 by VMIC Specifications subject to change without notice.						

configuration. The serial channel has an independent 16-byte FIFO to support baud rates up to 115 Kbaud. The connector for the serial port is provided on the front panel.

**ENHANCED PARALLEL PORT** — A single Centronics-compatible, fully bidirectional parallel port meets IEEE-1284 standards (compatibility, nibble, EPP and ECP). The parallel port contains a 16-byte FIFO to allow data rates up to 2 MB/s in ECP mode. The connector for the parallel port is provided on the front panel and requires a second slot.

**USB PORTS** — The VMICPCI-7305 provides two universal serial bus (USB) ports. Connection to the ports is established through a standard USB connector on the front panel and J2.

**KEYBOARD AND MOUSE PORTS** — The VMICPCI-7305 supports PS/2 keyboard and mouse through standard connectors on the front panel.

**WATCHDOG TIMER** — The VMICPCI-7305 provides a software-programmable watchdog timer. The watchdog timer is enabled under software control. Once the watchdog timer is enabled, software must access the timer within the specified timer period or a timeout will occur. Software can enable the watchdog timeout to assert a nonmaskable interrupt (NMI).

**16-bit Timers** — The VMICPCI-7305 provides the user with three general purpose 16-bit timers. These timers are mapped in I/O space and are completely software programmable.

**NONVOLATILE SRAM** — The VMICPCI-7305 provides 32 KB of nonvolatile SRAM. The contents of the SRAM are preserved when +5 V power is interrupted or removed from the unit.

**HARDWARE RESET** — A hardware reset switch is located behind a small diameter opening in the front panel and is activated by inserting a small rod and depressing the switch. This will reset the SBC board logic and will not drive the CompactPCI® bus reset.

**ANNUNCIATORS** — In addition to the two indicators associated with the Ethernet adapter, indicators for the IDE interface activity, board status and +5 V power status are provided.

**CompactPCI Bus Bridge** — The VMICPCI-7305 provides a 32-bit, 33 MHz interface to the CompactPCI bus, which is fully compliant with CompactPCI Revision 2.1, PCI 2.1, and PCI-to-PCI Bridge Architecture Revision 1.1.

**OPERATING SYSTEMS AND SOFTWARE SUPPORT** — The VMICPCI-7305 supports a wide variety of PC-compatible operating systems and application software.

## SPECIFICATIONS

### 3U Eurocard Form Factor:

Height:	100 mm
Length:	160 mm
Width:	Single or dual CompactPCI slots, depending on options

**Power Requirements:** +5 VDC ( $\pm 5$  percent), 1.1 A (typical), 1.5 A maximum, +3.3 VDC ( $\pm 5$  percent), 800 mA (typical), 1.0 A maximum

**Temperature:** -20 to 60 °C

**Normal Relative Humidity:** 10 to 90 percent, noncondensing

## TRADEMARKS

The VMIC logo is a registered trademark of VMIC. Windows and Windows NT are registered trademarks of Microsoft Corporation. CompactPCI is a registered trademark of PCI Industrial Computer Manufacturers' Group. Other registered trademarks are the property of their respective owners.

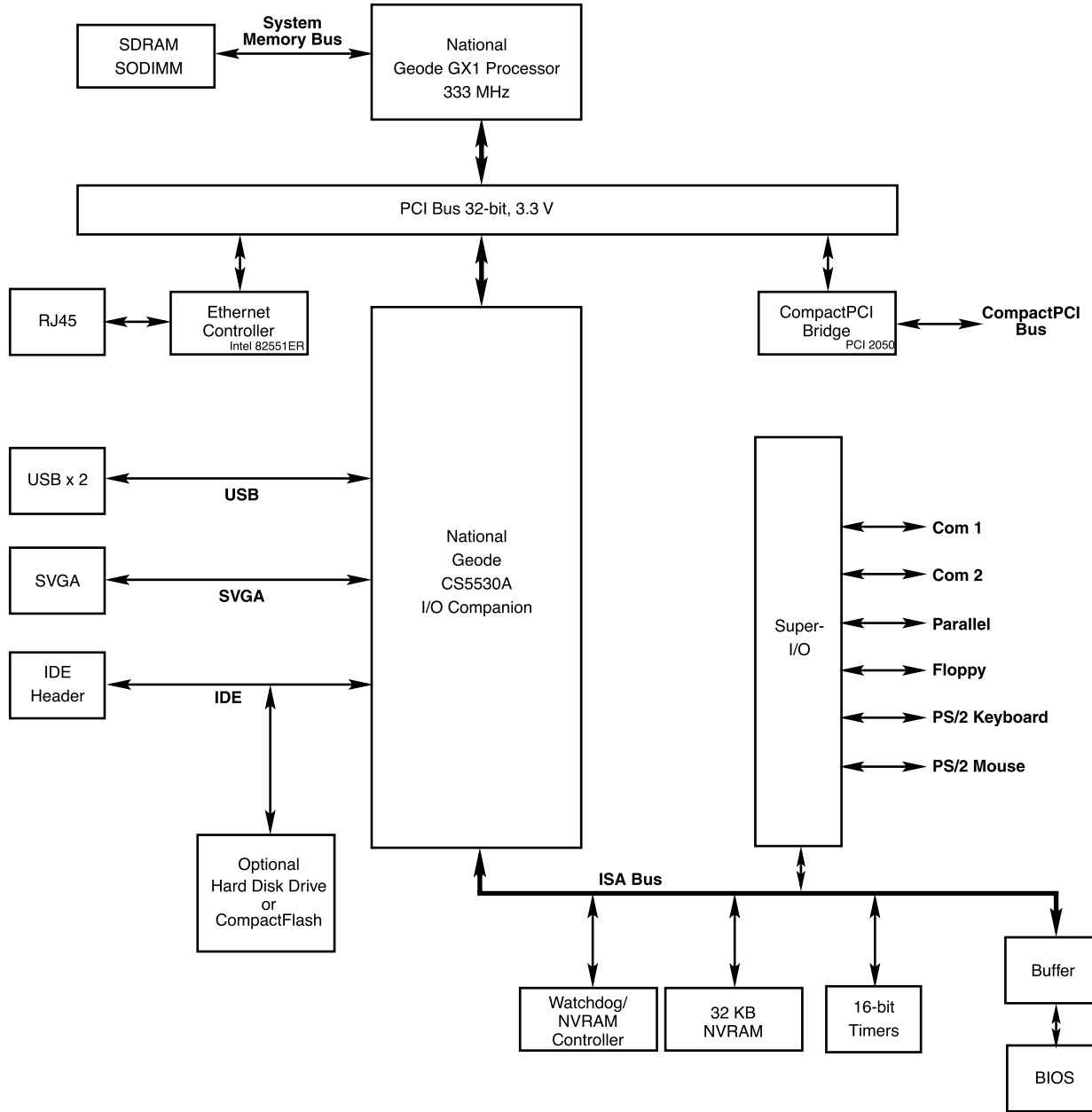


Figure 1. VMICPCI-7305 X86-Based 3U CompactPCI Processor

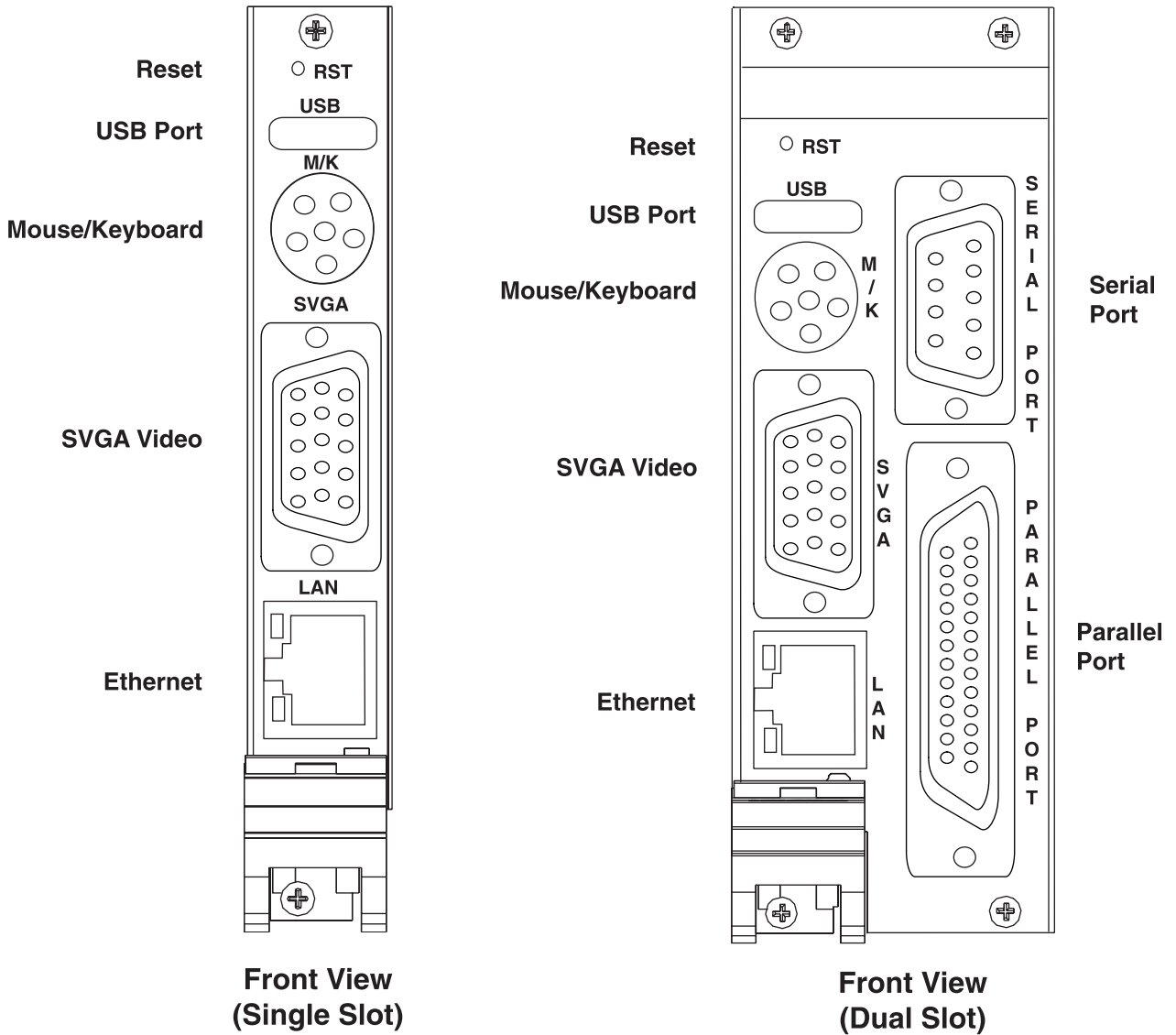


Figure 2. VMICPCI-7305 Front Panel Configuration



## Artisan Technology Group is your source for quality new and certified-used/pre-owned equipment

- FAST SHIPPING AND DELIVERY
- TENS OF THOUSANDS OF IN-STOCK ITEMS
- EQUIPMENT DEMOS
- HUNDREDS OF MANUFACTURERS SUPPORTED
- LEASING/MONTHLY RENTALS
- ITAR CERTIFIED SECURE ASSET SOLUTIONS

### SERVICE CENTER REPAIRS

Experienced engineers and technicians on staff at our full-service, in-house repair center

### *InstraView*<sup>SM</sup> REMOTE INSPECTION

Remotely inspect equipment before purchasing with our interactive website at [www.instraview.com](http://www.instraview.com) ↗

### WE BUY USED EQUIPMENT

Sell your excess, underutilized, and idle used equipment. We also offer credit for buy-backs and trade-ins. [www.artisanng.com/WeBuyEquipment](http://www.artisanng.com/WeBuyEquipment) ↗

### LOOKING FOR MORE INFORMATION?

Visit us on the web at [www.artisanng.com](http://www.artisanng.com) ↗ for more information on price quotations, drivers, technical specifications, manuals, and documentation

**Contact us:** (888) 88-SOURCE | [sales@artisanng.com](mailto:sales@artisanng.com) | [www.artisanng.com](http://www.artisanng.com)