



Artisan Technology Group is your source for quality new and certified-used/pre-owned equipment

- FAST SHIPPING AND DELIVERY
- TENS OF THOUSANDS OF IN-STOCK ITEMS
- EQUIPMENT DEMOS
- HUNDREDS OF MANUFACTURERS SUPPORTED
- LEASING/MONTHLY RENTALS
- ITAR CERTIFIED SECURE ASSET SOLUTIONS

SERVICE CENTER REPAIRS

Experienced engineers and technicians on staff at our full-service, in-house repair center

*InstraView*SM REMOTE INSPECTION

Remotely inspect equipment before purchasing with our interactive website at www.instraview.com ↗

WE BUY USED EQUIPMENT

Sell your excess, underutilized, and idle used equipment. We also offer credit for buy-backs and trade-ins. www.artisanng.com/WeBuyEquipment ↗

LOOKING FOR MORE INFORMATION?

Visit us on the web at www.artisanng.com ↗ for more information on price quotations, drivers, technical specifications, manuals, and documentation

Contact us: (888) 88-SOURCE | sales@artisanng.com | www.artisanng.com

GF Piping Systems → worldwide

Our sales companies and representatives ensure local support in over 100 countries.

www.piping.georgfischer.com



The technical data are not binding and not expressly warranted characteristics of the goods. They are subject to change. Please consult our General Conditions of Supply.

Australia

George Fischer Pty Ltd
Kingsgrove NSW 2008
Phone +61(0)2/95 54 39 77
australia.ps@georgfischer.com
www.georgfischer.com.au

Austria

Georg Fischer
Rohrleitungssysteme GmbH
3130 Herzogenburg
Phone +43(0)2782/856 43-0
austria.ps@georgfischer.com
www.georgfischer.at

Belgium/Luxembourg

Georg Fischer NV/SA
1070 Bruxelles/Brüssel
Phone +32(0)2/556 40 20
be.ps@georgfischer.com
www.georgfischer.be

Brazil

George Fischer Ltda
04795-100 São Paulo
Phone +55(0)11/5687 1311
br.ps@georgfischer.com

China

Georg Fischer
Piping Systems Ltd Shanghai
Pudong, Shanghai 201319
Phone +86(0)21/58 13 33 33
china.ps@georgfischer.com
www.cn.piping.georgfischer.com

Denmark/Iceland

Georg Fischer A/S
2630 Taastrup
Phone +45 (0)70 22 19 75
info.dk.ps@georgfischer.com
www.georgfischer.dk

France

George Fischer S.A.S.
93208 Saint-Denis Cedex 1
Phone +33(0)1/492 21 34 1
fr.ps@georgfischer.com
www.georgfischer.fr

Germany

Georg Fischer GmbH
73095 Albershausen
Phone +49(0)7161/302-0
info.de.ps@georgfischer.com
www.vgd.georgfischer.de

Georg Fischer DEKA GmbH
35232 Dautphetal-Mornshausen
Phone +49(0)6468/915-0
deka.ps@georgfischer.com
www.dekapipe.de

India

George Fischer Piping Systems Ltd
400 093 Mumbai
Phone +91(0)22/2820 2362
in.ps@georgfischer.com

Italy

Georg Fischer S.p.A.
20063 Cernusco S/N (MI)
Phone +3902/921 861
it.ps@georgfischer.com
www.georgfischer.it

Japan

Georg Fischer Ltd
556-0011 Osaka,
Phone +81(0)6/6635 2691
jp.ps@georgfischer.com
www.georgfischer.jp

Malaysia

Georg Fischer (M) Sdn. Bhd.
47500 Subang Jaya
Phone +60 (0)3-8024 7879
conne.kong@georgfischer.com.my

Middle East

George Fischer Piping Systems
Dubai, United Arab Emirates
Phone +971 4 289 41 20
gfdubai@emirates.net.ae
www.piping.georgfischer.com

Netherlands

Georg Fischer N.V.
8161 PA Epe
Phone +31(0)578/678 222
nl.ps@georgfischer.com
www.georgfischer.nl

Norway

Georg Fischer AS
1351 Rud
Phone +47(0)67 18 29 00
no.ps@georgfischer.com
www.georgfischer.no

Poland

Georg Fischer Sp. z o.o.
02-226 Warszawa
Phone +48(0)22/313 10 50
poland.ps@georgfischer.com
www.georgfischer.pl

Romania

Georg Fischer
Rohrleitungssysteme AG
70000 Bucharest - Sector 1
Phone +40(0)1/222 91 36
ro.ps@georgfischer.com

Singapore

George Fischer Pte Ltd
528 872 Singapore
Phone +65(0)67 47 06 11
sgp.ps@georgfischer.com
www.georgfischer.com.sg

Spain/Portugal

Georg Fischer S.A.
28046 Madrid
Phone +34(0)91/781 98 90
es.ps@georgfischer.com
www.georgfischer.es

Sweden/Finland

Georg Fischer AB
12523 Älvsjö-Stockholm
Phone +46(0)8/506 775 00
info.se.ps@georgfischer.com
www.georgfischer.se

Switzerland

Georg Fischer
Rohrleitungssysteme [Schweiz] AG
8201 Schaffhausen
Phone +41(0)52 631 30 26
ch.ps@georgfischer.com
www.piping.georgfischer.ch

Taiwan

Georg Fischer Ltd.
2F, No. 88, Hsing Te Road
San Chung City
Taipei Hsien, Taiwan (R.O.C.)
Phone +886 2 8512 2822
Fax +886 2 8512 2823

United Kingdom/Ireland

George Fischer Sales Limited
Coventry, CV2 2ST
Phone +44(0)2476 535 535
uk.ps@georgfischer.com
www.georgfischer.co.uk

USA/Canada/Latin America/Caribbean

George Fischer Inc.
Tustin, CA 92780-7258
Phone +1(714) 731 88 00
Toll Free 800/854 40 90
us.ps@georgfischer.com
www.us.piping.georgfischer.com

Export

Georg Fischer
Piping Systems [Switzerland] Ltd.
8201 Schaffhausen
Phone +41 (0)52-631 30 26
Fax +41 (0)52-631 28 93
export.ps@georgfischer.com
www.piping.georgfischer.ch

GMST 5944/4 (1.06)

© Georg Fischer Piping Systems Ltd
CH-8201 Schaffhausen/Switzerland, 2006
Printed in Switzerland

+GF+

GEORG FISCHER
PIPING SYSTEMS



Technical
Documentation

Solenoid Valves Type 166



+GF+

GEORG FISCHER
PIPING SYSTEMS

Solenoid valves

Type 166

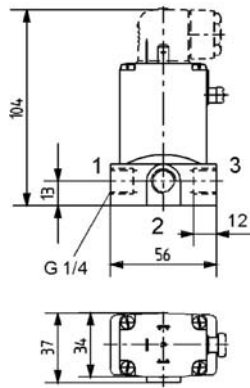
The solenoid valves type 166 are direct-acting 2/2 or 3/2-way valves with a clapper armature. They are used for diverse functions, e.g. opening, shutting, dosing, dispensing and mixing. The solenoid system and medium area are separated from one another by means of an isolating membrane. The valve therefore has a long service life, even with dry runs. Due to the use of PP and PVDF as housing materials, the type 166 is especially suitable for aggressive media. The valve is mounted via a G 1/4" union and is available in the nominal diameters DN3, DN4 and DN5.

All the valves are naturally also available as 24 V=, 24V 50Hz, 110V 60Hz and 230V 50Hz versions.

Measurements:

Type 166

The connections marked 1, 2 and 3 are indicated according to mode of operation in the table below.



→ Our strengths

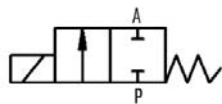
- compact design
- easy installation
- the right operating modes
- low power consumption
- arbitrary mounting position

Connection table

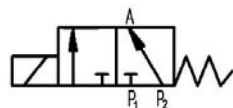
Mode of operation	Connection 1	Connection 2	Connection 3
A	A	-	P
E	P1	A	P2
F	A	P	B

Mode of operation :

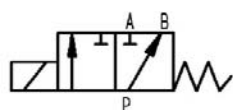
A = normally closed, de-energized, outlet A vented



E = mixed valve, direct-acting, de-energized P2 = → outlet A open, P1 closed



F = feed valve, direct-acting, de-energized P = → B open, outlet A closed



Technical data type 166

Housing and seat materials	PP / PVDF	
Seal materials	EPDM / FPM	
Medium temperature	0...80°C	PP with EPDM
	0...80°C	PP with FPM
	-20...80°C	PVDF with FPM
Ambient temperature	0...55°C	
Viscosity	max. 37 mm ² /s	
Operating voltage	24 V DC / 24 V, 50 Hz / 230 V, 50 Hz	
Voltage tolerance	+/- 10%	
Switching frequency	ca. 1000/min	
Rated duty	Intermittent 40%, 30 min	
Electr. connection	Socket for cable ø 7mm	
Protection rating	IP65 with socket connection	
Any mounting position	preferably actuator on top	
Pipe connection	G 1/4"	



Diameter [mm]	Mode of operation	Kv-value* Water [l/min]	Pressure range **		Power consumption startup (electric)		Power consumption operation (electric)		Weight [kg]
			AC [bar]	DC [bar]	AC [VA]	DC [W]	AC [VA/W]	DC [W]	
3	A	4.20	0 - 10	0 - 8	30	8	15/8	8	0.4
	F		0 - 10	0 - 8					
	E		0 - 6	0 - 4					
4	A	5.00	0 - 5	0 - 4	30	8	15/8	8	0.4
	E		0 - 5	0 - 4					
	F		0 - 3	0 - 2					
5	A	6.70	0 - 4.5	-					0.4

Response time ***	Open		Close	
Mode of operation	AC [ms]	DC [ms]	AC [ms]	DC [ms]
A	ca. 8	10 - 17	ca. 15	15 - 20

* Kv-value [m³/h] at +20°C, 1 bar pressure at valve inlet and free outlet
 ** Pressure data [bar] gauge pressure

*** Response time [ms] Measured at valve outlet at 6 bar and +20°C
 open: pressure buildup 0...90%, close: pressure release 100...10%

Solenoid valve 166 PP-H							
Mode of operation	Nominal diameter [mm]	Kv value [l/min]	Pipe connection	Pressure range	Voltage	EPDM	FPM
A	3.0	4.20	G 1/4"	0 - 8	24V DC	199 166 000	199 166 005
A	4.0	5.00	G 1/4"	0 - 4	24V DC	199 166 001	199 166 006
A	5.0	6.70	G 1/4"	0 - 3	24V DC	199 166 002	199 166 007
A	3.0	4.20	G 1/4"	0 - 10	230V 50Hz	199 166 010	199 166 015
A	4.0	5.00	G 1/4"	0 - 5	230V 50Hz	199 166 011	199 166 016
A	5.0	6.70	G 1/4"	0 - 4.5	230V 50Hz	199 166 012	199 166 017
E	3.0	4.20	G 1/4"	0 - 4	24V DC	199 166 150	199 166 155
E	4.0	5.00	G 1/4"	0 - 2	24V DC	199 166 151	199 166 156
E	3.0	4.20	G 1/4"	0 - 6	230V 50Hz	199 166 160	199 166 165
E	4.0	5.00	G 1/4"	0 - 3	230V 50Hz	199 166 161	199 166 166
F	4.0	5.00	G 1/4"	0 - 4	24V DC	199 166 201	199 166 206
F	4.0	5.00	G 1/4"	0 - 4	24V DC	199 166 211	199 166 216

Solenoid valve 166 PVDF							
Mode of operation	Nominal diameter [mm]	Kv value [l/min]	Pipe connection	Pressure range	Voltage	EPDM	FPM
A	3.0	4.20	G 1/4"	0 - 8	24V DC		199 166 505
A	4.0	5.00	G 1/4"	0 - 4	24V DC		199 166 506
A	5.0	6.70	G 1/4"	0 - 3	24V DC		199 166 507
A	3.0	4.20	G 1/4"	0 - 10	230V 50Hz		199 166 515
A	4.0	5.00	G 1/4"	0 - 5	230V 50Hz		199 166 516
A	5.0	6.70	G 1/4"	0 - 4.5	230V 50Hz		199 166 517
E	4.0	5.00	G 1/4"	0 - 2	24V DC		199 166 656
E	4.0	5.00	G 1/4"	0 - 3	230V 50Hz		199 166 666



Artisan Technology Group is your source for quality new and certified-used/pre-owned equipment

- FAST SHIPPING AND DELIVERY
- TENS OF THOUSANDS OF IN-STOCK ITEMS
- EQUIPMENT DEMOS
- HUNDREDS OF MANUFACTURERS SUPPORTED
- LEASING/MONTHLY RENTALS
- ITAR CERTIFIED SECURE ASSET SOLUTIONS

SERVICE CENTER REPAIRS

Experienced engineers and technicians on staff at our full-service, in-house repair center

*InstraView*SM REMOTE INSPECTION

Remotely inspect equipment before purchasing with our interactive website at www.instraview.com ↗

WE BUY USED EQUIPMENT

Sell your excess, underutilized, and idle used equipment. We also offer credit for buy-backs and trade-ins. www.artisanng.com/WeBuyEquipment ↗

LOOKING FOR MORE INFORMATION?

Visit us on the web at www.artisanng.com ↗ for more information on price quotations, drivers, technical specifications, manuals, and documentation

Contact us: (888) 88-SOURCE | sales@artisanng.com | www.artisanng.com