



Artisan Technology Group is your source for quality new and certified-used/pre-owned equipment

- FAST SHIPPING AND DELIVERY
- TENS OF THOUSANDS OF IN-STOCK ITEMS
- EQUIPMENT DEMOS
- HUNDREDS OF MANUFACTURERS SUPPORTED
- LEASING/MONTHLY RENTALS
- ITAR CERTIFIED SECURE ASSET SOLUTIONS

SERVICE CENTER REPAIRS

Experienced engineers and technicians on staff at our full-service, in-house repair center

*InstraView*SM REMOTE INSPECTION

Remotely inspect equipment before purchasing with our interactive website at www.instraview.com ↗

WE BUY USED EQUIPMENT

Sell your excess, underutilized, and idle used equipment. We also offer credit for buy-backs and trade-ins. www.artisanng.com/WeBuyEquipment ↗

LOOKING FOR MORE INFORMATION?

Visit us on the web at www.artisanng.com ↗ for more information on price quotations, drivers, technical specifications, manuals, and documentation

Contact us: (888) 88-SOURCE | sales@artisanng.com | www.artisanng.com

These space-saving heating circulators are used to control temperatures in smaller external systems such as density meters, viscometers, photometers, refractometers or similar devices. A powerful pressure pump provides a good heat exchange with closed systems and thus optimum temperature accuracy.

The available bath opening also allows samples to be inserted into the circulator's own bath. Various bath volumes and depths cover a wide application range. The interior and exterior of the bath vessels are made from stainless steel for easy cleaning and durability. The bath P5 is made from polyphenyleneoxide (PPO). A built-in water cooling coil enables temperature control down to 2°C...3°C above the cooling water temperature.

Die HAAKE DC- and DL-Class

- Robust PID control
- Double display
- 3 fixed temperatures
- RS232C Interface (RS485 option)
- RTA / FIS / ESK / TRS

Comes with

Each 2 **nozzles** for tubins with 8 and 12 mm i. Ø, a **tap water cooling coil** and a **bath cover**.

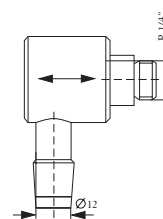
C10-P5/U, C10-B3: plus **checking thermometer** 0 to 100°C, division 0.5°C.

Optional accessories Order-No.

Rack for 20 tubes/
16 mm Ø for B3-bath **333-0456**

Optional accessories Order-No.

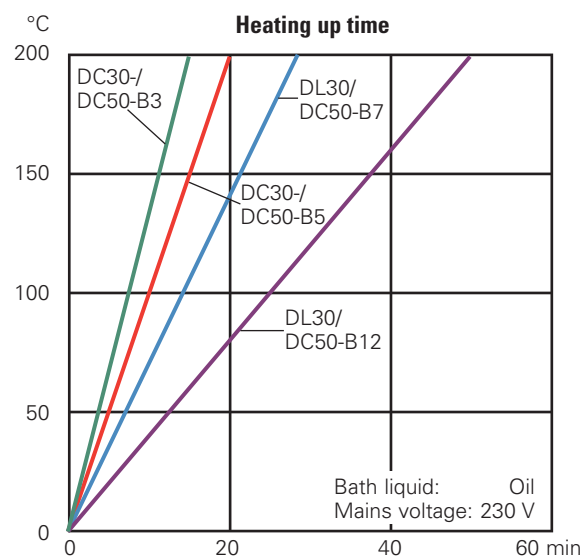
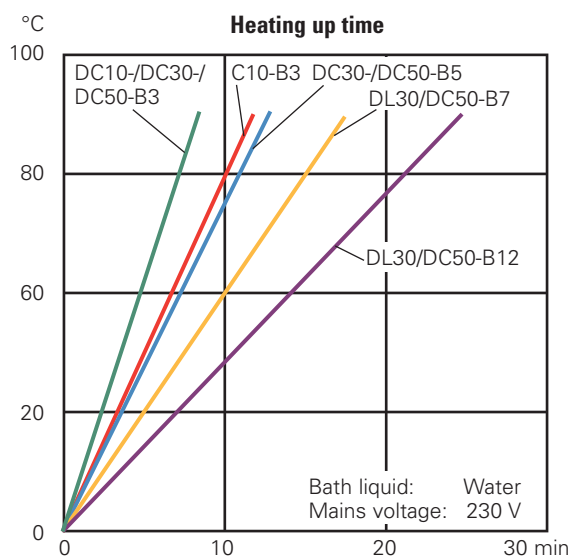
Racks for bath B5, B7
18 tubes, 16 mm Ø **333-0500**
26 micro centrifuge tubes,
10 mm Ø **333-0501**
6 centrifuge tubes,
30 mm Ø **333-0502**
Universal hose nozzle
for tubing of 3 to 6 mm i. Ø **832-0275**
Reservoir drain



333-0499

Software for DC30, DL30, DC50 (s. p. 32)

Choose the **necessary tubes, bath liquids** or **Pt 100 sensors** on pages 30/31/33.



Technical specification acc. to DIN 12876		C10-P5/U	DC10-P5/U	C10-B3	DC10-B3	DC30-B3	DC50-B3
Working temperature range	°C	25..100	25..100	32..100	32..100	32..200	32..200
	°C	20..100	20..100	20..100	20..100	20..200	20..200
	°C	0..100	0..100	-30..100	-30..100	-50..200	-50..200
Temperature accuracy	+/- K	0.04	0.02	0.04	0.02	0.01	0.01
Heater capacity 230V/115V	kW	1.5/1.0	2.0/1.2	1.5/1.0	2.0/1.2	2.0/1.2	2.0/1.2
Pump: Pressure/Flow rate max.	mbar/ l/min	300/12.5	300/12.5	300/12.5	300/12.5	300/12.5	300/12.5
Bath opening: WxLxD	cm	13 x 17 x 16	13 x 17 x 16	13 x 10 x 15	13 x 10 x 15	13 x 10 x 15	13 x 10 x 15
Bath volume	l	5	5	3	3	3	3
Overall dimensions: WxLxH	cm	16 x 33 x 36	16 x 33 x 36	20 x 30 x 37	20 x 30 x 37	20 x 30 x 37	20 x 30 x 37
Net weight	kg	5.2	5.4	7.1	7.3	7.3	7.4
Total wattage 230V/115V	VA	1550/1050	2050/1250	1550/1050	2050/1250	2050/1250	2050/1250
Order-No. for 230V/50..60Hz for 115V/60Hz		425-1851	426-1851	425-1701	426-1701	426-3701	426-5701
		425-1852	426-1852	425-1702	426-1702	426-3702	426-5702
ExtraPlus-Rating (see page 35)		+	++	+	++	+++	++++



DC30-B5	DC50-B5	DL30-B7	DC50-B7	DL30-B12	DC50-B12
32..200 20..200 -50..200	32..200 20..200 -50..200	30..200 20..200 -50..200	30..200 20..200 -50..200	28..200 20..200 -50..200	28..200 20..200 -50..200
0.01	0.01	0.01	0.01	0.01	0.01
2.0/1.2	2.0/1.2	2.0/1.2	2.0/1.2	2.0/1.2	2.0/1.2
300/12.5	300/12.5	300/12.5	300/12.5	300/12.5	300/12.5
14 x 15 x 15	14 x 15 x 15	13 x 10 x 20	13 x 10 x 20	22 x 14 x 20	22 x 14 x 20
4.5	4.5	7	7	12	12
21 x 36 x 38	21 x 36 x 38	23 x 36 x 44	23 x 36 x 44	32 x 38 x 44	32 x 38 x 44
8.5	8.5	9.5	9.5	13.2	13.2
2050/1250	2050/1250	2050/1550	2050/1250	2050/1550	2050/1250
426-3801 426-3802	426-5801 426-5802	427-3811 427-3812	426-5811 426-5812	427-3821 427-3822	426-5821 426-5822
+++	++++	+++	++++	+++	++++





Artisan Technology Group is your source for quality new and certified-used/pre-owned equipment

- FAST SHIPPING AND DELIVERY
- TENS OF THOUSANDS OF IN-STOCK ITEMS
- EQUIPMENT DEMOS
- HUNDREDS OF MANUFACTURERS SUPPORTED
- LEASING/MONTHLY RENTALS
- ITAR CERTIFIED SECURE ASSET SOLUTIONS

SERVICE CENTER REPAIRS

Experienced engineers and technicians on staff at our full-service, in-house repair center

*InstraView*SM REMOTE INSPECTION

Remotely inspect equipment before purchasing with our interactive website at www.instraview.com ↗

WE BUY USED EQUIPMENT

Sell your excess, underutilized, and idle used equipment. We also offer credit for buy-backs and trade-ins. www.artisanng.com/WeBuyEquipment ↗

LOOKING FOR MORE INFORMATION?

Visit us on the web at www.artisanng.com ↗ for more information on price quotations, drivers, technical specifications, manuals, and documentation

Contact us: (888) 88-SOURCE | sales@artisanng.com | www.artisanng.com