



Artisan Technology Group is your source for quality new and certified-used/pre-owned equipment

- FAST SHIPPING AND DELIVERY
- TENS OF THOUSANDS OF IN-STOCK ITEMS
- EQUIPMENT DEMOS
- HUNDREDS OF MANUFACTURERS SUPPORTED
- LEASING/MONTHLY RENTALS
- ITAR CERTIFIED SECURE ASSET SOLUTIONS

SERVICE CENTER REPAIRS

Experienced engineers and technicians on staff at our full-service, in-house repair center

*InstraView*SM REMOTE INSPECTION

Remotely inspect equipment before purchasing with our interactive website at www.instraview.com ↗

WE BUY USED EQUIPMENT

Sell your excess, underutilized, and idle used equipment. We also offer credit for buy-backs and trade-ins. www.artisanng.com/WeBuyEquipment ↗

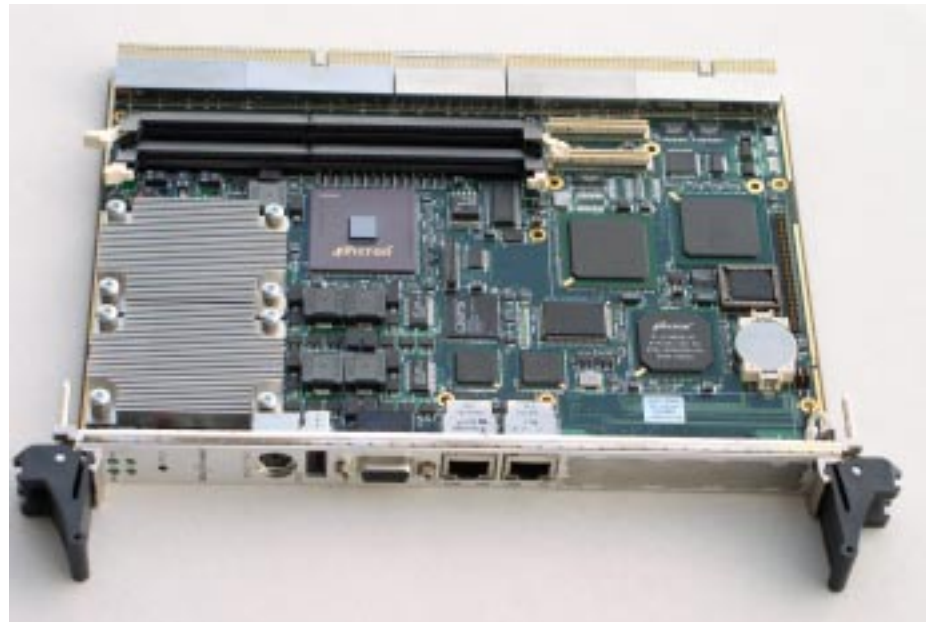
LOOKING FOR MORE INFORMATION?

Visit us on the web at www.artisanng.com ↗ for more information on price quotations, drivers, technical specifications, manuals, and documentation

Contact us: (888) 88-SOURCE | sales@artisanng.com | www.artisanng.com

IBC 2801

Dual Low Power Pentium® III System Master CPU Board



Ordering Information

IBC 2801-850

Single Pentium III-M, 850 MHz w/dual 10/100 Ethernet, Ultra 160 SCSI and SVGA

IBC 2801-D850

Dual Pentium III-M, 850 MHz w/dual 10/100 Ethernet, Ultra 160 SCSI and SVGA

IBC 2801-933

Single Pentium III-M, 933 MHz w/dual 10/100 Ethernet, Ultra 160 SCSI and SVGA

IBC 2801-D933

Dual Pentium III-M, 933 MHz w/dual 10/100 Ethernet, Ultra 160 SCSI and SVGA

Memory Options

DSDM-128MB	128MB DDR SDRAM
DSDM-256MB	256MB DDR SDRAM
DSDM-512MB	512MB DDR SDRAM
DSDM-1GB	1 GB DDR SDRAM
DSDM-2GB	Call

IBC 2703-RIO

Rear I/O transition module for 280X with 1.8" hard drive socket

Hard Drive Options

HDD-5GB	5GB 1.8" IDE HDD
HDD-10GB	10GB 1.8" IDE HDD
HDD-20GB	20GB 1.8" IDE HDD

IBC 16010 - Storage Mezzanine Board for 280x with 1.8" hard drive socket and CompactFlash socket

Hard Drive Options

HDD-5GB	5GB 1.8" IDE HDD
HDD-10GB	10GB 1.8" IDE HDD
HDD-20GB	20GB 1.8" IDE HDD

CompactFlash Options

CF-32MB	32MB CompactFlash
CF-64MB	64MB CompactFlash
CF-128MB	128MB CompactFlash
CF-256MB	256MB CompactFlash
MD-1GB	1GB Microdrive

Specifications

Microprocessor

- Single or dual Low Power Pentium III Processors at up to 933 MHz
- Supports possible future Intel® speed upgrades

Cache

- 512 Kbytes Integrated Full speed L2 cache

Chipset

- Micron® Copperhead™/Coppertail™

Dynamic RAM

- Up to 2 GB of Double Data Rate (DDR) synchronous DRAM at 266 MHz

32-bit PCI Mezzanine Card (PMC) Expansion

CompactPCI Bus Master

- 32/64 bit 33/66 MHz CompactPCI Bus interface
- Stand-alone mode to operate in Peripheral slot

Optional Storage Mezzanine Board

- 1.8" IDE HDD up to 20GB
- CompactFlash up to 256MB or 1GB Microdrive

SCSI Interface

- Ultra 160 SCSI, LSI 53C1000
- Supports future upgrades to Ultra 320

BIOS

- Award BIOS
- Customized BIOS available

Watchdog Timer

- Software controlled with reset capability

Ethernet Interfaces

- Dual 10/100BaseTx Ethernet, Intel 82559ER
- PICMG® 2.16 compatible pin-outs w/ 2703 RIO

PICMG 2.16 Compliant

Video Interface

- 69030 PCI Video with 4MB Memory
- 1280 x 1024 x True Color non-interlaced

Enhanced IDE (Dual)

- Dual IDE Interface up to 4 drives
- ATA 100 with synchronous transfers up to 100MB/s

System Monitoring

- On-board monitoring of voltages, temperatures
- Optional PICMG 2.9 Compliant BMC/PM
- Optional SNMP Agent Software Available

USB

- One PC compatible USB port
- Additional USB port on 2703 RIO rear panel

Standard I/O

- Floppy drive interface, up to 2 drives
- Dual 16C550 Serial Ports
- Bi-directional Parallel Port with EPP and ECP
- PS/2 Mouse Port
- PS/2 Keyboard Interface

Mechanicals

- 1-Slot (4HP) x 6U **CompactPCI®** Compliant
- **CompactPCI®** Compliant 2703 Rear I/O Board

Operating Environment

- Temperature: 0° - +50° C
- Storage: -40° - +85° C

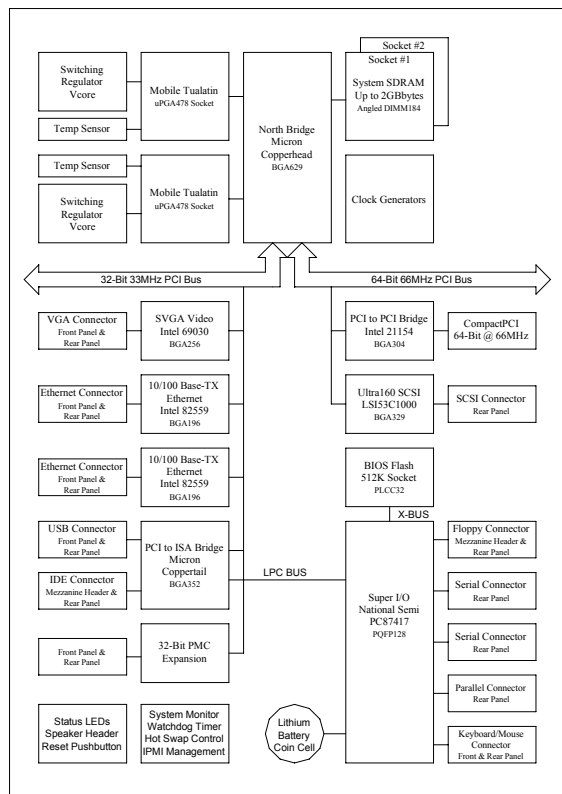
Power Requirements (Typical)

- 3.5A (single CPU) or 5A (dual CPU) at +5.0 volts
- 2A (single CPU) or 3A (dual CPU) at +3.3 Volts
- 24Watts (single CPU) or 34 Watts (dual CPU)

IBC 2801

Dual Low Power Pentium® III System Master CPU Board

The IBC 2801 is fully CPSB PICMG 2.16 compatible to support Ethernet switched fabric backplane architectures. With the additional compatibility of PICMG 2.1 full hot-swap and PICMG 2.9 full IPMI system management, the IBC 2801 is a powerful, scalable, open architecture building block in high-reliability and high-availability CompactPCI-based server blade systems from I-Bus. The IBC 2801 supports Dual Low Power Embedded Intel Pentium III processors, operating at up to 933MHz. Program and data storage needs are met with support for up to 2 Gbytes of DDR SDRAM as well as 256+ Mbytes of CompactFlash or a 1 Gbyte IBM Microdrive, and a 1.8" IDE hard drive up to 20GB on board. Additional features include Ultra 160 SCSI with rear I/O, dual 10/100BaseTX Ethernet, 32-bit PMC expansion and on-board AGP Video. Also supported is the full set of standard PC peripherals including Ultra ATA/100, 1.44 Mbyte floppy, USB, RS-232 serial ports, parallel port, mouse and keyboard.



Peripheral Map

Peripheral	Front Panel	Rear Panel	Comment
SVGA Video	✓	✓	Jumper selectable
Ethernet 0	✓	✓	Jumper selectable
Ethernet 1	✓	✓	Jumper selectable
PMC	✓		
Ultra 160 SCSI		✓	On rear I/O board as internal 68-pin connector
Ultra IDE 0		✓	Also available on-board via 50-pin header
Ultra IDE 1		✓	On rear I/O board as internal header connector
Floppy		✓	Also available on-board via 50-pin header
USB 0	✓		
USB 1		✓	
Serial Port 0		✓	
Serial Port 1		✓	
Printer Port		✓	On rear I/O board as internal header connector
Mouse	✓	✓	Shared with keyboard on single PS/2 connector
Keyboard	✓	✓	Shared with mouse on single PS/2 connector

For Further Information



Worldwide Headquarters

I-Bus Corporation
 3350 Scott Blvd, Building 54
 Santa Clara, CA 95054
 United States
 Phone : +1 (408) 450-7880
 Fax : +1 (408) 450-7881
Toll Free: 877-777-IBUS
 Email: contact.us@ibus.com

European Headquarters

I-Bus UK Ltd
 Unit 6, Chichester Business Park
 City Fields Way, Tangmere
 West Sussex, PO20 2LB, UK
 Tel: +44 (0) 1243 756300
 Fax: +44 (0) 1243 756301
 Email: contact.uk@ibus.com

France, Italy

I-Bus France
 B.P 45 Valbonne
 06901 Sophia Antipolis CEDEX
 France
 Tel: +33 (0) 493 004 360
 Fax: +33 (0) 493 004 369
 Email: contact.fr@ibus.com



Artisan Technology Group is your source for quality new and certified-used/pre-owned equipment

- FAST SHIPPING AND DELIVERY
- TENS OF THOUSANDS OF IN-STOCK ITEMS
- EQUIPMENT DEMOS
- HUNDREDS OF MANUFACTURERS SUPPORTED
- LEASING/MONTHLY RENTALS
- ITAR CERTIFIED SECURE ASSET SOLUTIONS

SERVICE CENTER REPAIRS

Experienced engineers and technicians on staff at our full-service, in-house repair center

*InstraView*SM REMOTE INSPECTION

Remotely inspect equipment before purchasing with our interactive website at www.instraview.com ↗

WE BUY USED EQUIPMENT

Sell your excess, underutilized, and idle used equipment. We also offer credit for buy-backs and trade-ins. www.artisanng.com/WeBuyEquipment ↗

LOOKING FOR MORE INFORMATION?

Visit us on the web at www.artisanng.com ↗ for more information on price quotations, drivers, technical specifications, manuals, and documentation

Contact us: (888) 88-SOURCE | sales@artisanng.com | www.artisanng.com