



Artisan Technology Group is your source for quality new and certified-used/pre-owned equipment

- FAST SHIPPING AND DELIVERY
- TENS OF THOUSANDS OF IN-STOCK ITEMS
- EQUIPMENT DEMOS
- HUNDREDS OF MANUFACTURERS SUPPORTED
- LEASING/MONTHLY RENTALS
- ITAR CERTIFIED SECURE ASSET SOLUTIONS

SERVICE CENTER REPAIRS

Experienced engineers and technicians on staff at our full-service, in-house repair center

*InstraView*SM REMOTE INSPECTION

Remotely inspect equipment before purchasing with our interactive website at www.instraview.com ↗

WE BUY USED EQUIPMENT

Sell your excess, underutilized, and idle used equipment. We also offer credit for buy-backs and trade-ins. www.artisanng.com/WeBuyEquipment ↗

LOOKING FOR MORE INFORMATION?

Visit us on the web at www.artisanng.com ↗ for more information on price quotations, drivers, technical specifications, manuals, and documentation

Contact us: (888) 88-SOURCE | sales@artisanng.com | www.artisanng.com

Industrial Monitor DM & SRM Series

10.4", 12.1", 15", 17", LCD Monitor

With the auto-dimming function, the display's brightness will automatically adjust to the light source.

IEI's Sun Readable Monitors with enhanced ultra-high brightness TFT LCD color panels comes in three sizes and with our proprietary direct edge lighting and backlighting techniques. Our Sun Readable Monitors are available from 700 to 1750 units and comes with up to 16.7 million colors. These products are modeled to handle outdoor applications, such as KIOSK, ATMs, and car navigation systems...etc.

Main Features

- ◆ SRM: Sun-Readable Monitor with high luminance
- ◆ Aluminum front panel is available for a harsh environment
- ◆ Plastic front panel provides a light & economical solution.
- ◆ Auto-Dimming function available with aluminum front panel for SRM Series
- ◆ Analog VGA Input



*Aluminum Made Front Panel
meets IP65 standard*

Model	DM-104	DM-121-R2 / SRM-121A	DM-150-R2 / SRM-150A	DM-170-R2 / SRM-170A-R2
Display Area	10.4"	12.1"	15"	17"
Display Type	SVGA TFT	SVGA TFT	XGA TFT	SXGA TFT
Max. Resolution	800 x 600	800 x 600	1024 x 768	1280 x 1024
Luminance (cd/m ²)	250	250 (DM-121-R2) 1308 (SRM-121A)	250 (DM-150-R2) 1750 (SRM-150A)	250 (DM-170-R2) 1000 (SRM-170A-R2)
Color	262K	262K	262K	16.7M
LCD MTBF	50000 hrs	50000 hrs	50000 hrs	50000 hrs
Backlight MTBF	25000 hrs	25000 hrs	25000 hrs	25000 hrs / 25000 hrs
Electronic Items				
VGA Input Interface	DB15	DB15	DB15, DVI-I	DB15, DVI-I
Frequency	Horizontal	60~65 KHz	25~65/50~58 KHz	30~80/55~60 KHz
	Vertical	60~75 Hz	56~75 Hz	60~75/50~75 Hz
Power Input Rating	12VDC	12VDC	12VDC or 24VDC	12VDC or 24VDC
Control Button	Language	English	English	English
	Function	OSD Control, Positions	OSD Control, Positions	OSD Control, Positions
Mechanical Items				
Dimension	312 x 242 x 54.9 mm	340 x 260 x 52.7 mm (DM-121)-R2	410 x 309 x 55.7 mm (DM-150)-R2	452 x 355.5 x 60.8 mm (DM-170)-R2
		340 x 260 x 65.6 mm (SRM-121)	410 x 309 x 65.1 mm (SRM-150)	452 x 355.5 x 80.8 mm (SRM-170-R2)
Construction	Plastic Front Panel	Plastic or Aluminium Front Panel	Plastic or Aluminium Front Panel	Plastic or Aluminium Front Panel
Mounting Configuration	19" Rack-mount, Wall-mount Panel-mount (front), Swivel Arm (VESA 75/100mm)	19" Rack-mount, Wall-mount Panel-mount (front), Swivel Arm (VESA 75/100mm)	19" Rack-mount, Wall-mount Panel-mount (front), Swivel Arm (VESA 75/100mm)	19" Rack-mount, Wall-mount Panel-mount (front), Swivel Arm (VESA 75/100mm)
Weight (NET / GW)	2.5 kg / 5kg	2 kg / 5 kg (DM-121-R2)	4 kg / 8 kg (DM-150-R2)	5 kg / 10 kg (DM-170-R2)
		4 kg / 6 kg (SRM-121A)	5 kg / 8 kg (SRM-150A)	8 kg / 12 kg (SRM-170A-R2)
Environment				
Operating Temperature	0°C ~ 50°C	0°C ~ 50°C (DM-121-R2) 0°C ~ 40°C (SRM-121A)	0°C ~ 50°C (DM-150-R2) 0°C ~ 40°C (SRM-150A)	0°C ~ 50°C (DM-170-R2) 0°C ~ 40°C (SRM-170A-R2)
Storage Temperature	-20°C ~ 60°C	-20°C ~ 60°C	-20°C ~ 60°C	-20°C ~ 60°C
Front Panel Protection	meets IP65	meets IP65	meets IP65	meets IP65
Option				
Video Input Interface	N/A	NA	Composite & S-video	Composite & S-video
Case Color	White (PANTONE-413C)	White (PANTONE 413C)	White (PANTONE 413C)	White (PANTONE 413C)
Touchscreen ARM	T-R104B (Res.)	T-R121B (Res.), T-C121 (Cap.)	T-R151B (Res.), T-C151 (Cap.)	T-R170B (Res.)
	ARM-11	ARM-11	ARM-11	ARM-31
Rackmount kit (Height)	RK-104 (6U)	RK-121 (8U)	RK-150 (8U)	RK-170 (8.5U)

Note: * SRM-121A Metal front panel

* For other color of front panel and chassis, please contact supplier



ICP Deutschland GmbH
Industrial Computer Products
Humboldtstr. 36

Artisan Technology Group, Quality Instrumentation ... Guaranteed SOURCE | www.artisantg.com

Tel.: +49 (0)711-45 96 00 30
Fax: +49 (0)711-45 96 00 50
http://www.icp-deutschland.de



Industrial Monitor DM & SRM Series

10.4", 12.1", 15", 17", LCD Monitor

Analog VGA Input



SRM-150AW



DM-150AW

OSD and Auto
Dimming function

OSD (On Screen
Display)



VGA

DVI

Ordering Information

- **DM-64T** 6.4" TFT LCD 12VDC Input Analog VGA Input
- **DM-84T** 8.4" TFT LCD 12VDC Input Analog VGA Input
- **DM-104W** 10.4" LCD monitor with VGA input
- **DM-121W - M -R2** 12.1" LCD monitor with VGA input
- **DM-150W - M -R2** 15" LCD monitor with VGA and DVI input
- **DM-170W - M -R2** 17" LCD monitor with VGA and DVI input
- **SRM-121AW - M** 12.1" Sun Readable LCD monitor with VGA input
- **SRM-150AW - M** 15" Sun Readable LCD monitor with VGA and DVI input
- **SRM-170AW - M -R2** 17" Sun Readable LCD monitor with VGA and DVI input

M: Front Panel material **AL**: Aluminum **Note**: Plastic

- **ARM-11**: Flat Panel Monitor Arm Loading capacity from 3kg ~ 6kg for various demands
- **ARM-31**: Flat panel Monitor Arm Loading capacity from 7kg~14kg for various demands
- **Rack mount kit**: RK-104, RK-121, RK-150, RK-170
- **STAND-100**: LCD Monitor Stand for 3~8kg
- **Touch Screen**: T-R104B, T-R121B, T-R151B, T-R170B, T-C121, T-C151,

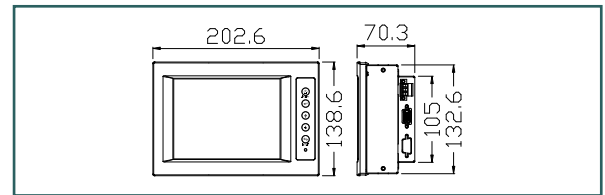
(Capacitive type touch screen is provided with aluminum front panel only)

- **CB-DVI-D**: DVI-D (M) to DVI -D (M) single link cable

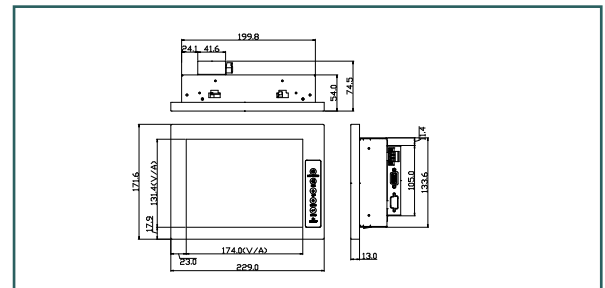
Note:

- LCD Measurement Setup: The LCD module should be stabilized at given temperature for 20 minutes to avoid abrupt temperature change during measuring. In order to stabilize the luminance, the measurement should be executed after lighting Backlight for 20 minutes in a windless room.
- 15", 17" Model for video input function, please contact supplier.

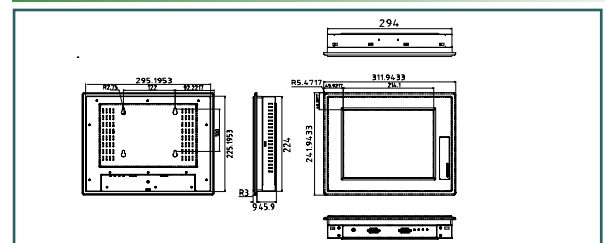
Dimensions: DM-64T



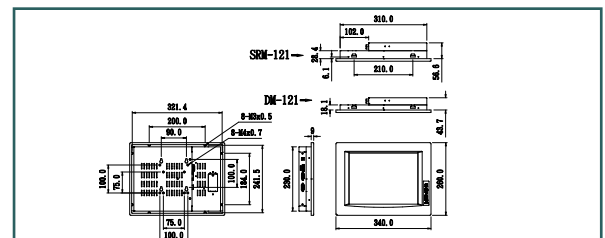
Dimensions: DM-84T



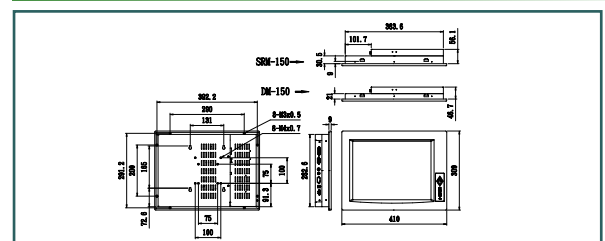
Dimensions: DM-104



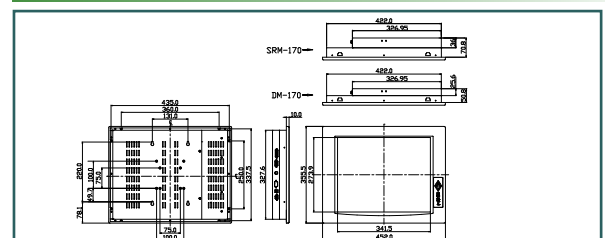
Dimensions: DM-121



Dimensions: DM-150



Dimensions: DM-170





Artisan Technology Group is your source for quality new and certified-used/pre-owned equipment

- FAST SHIPPING AND DELIVERY
- TENS OF THOUSANDS OF IN-STOCK ITEMS
- EQUIPMENT DEMOS
- HUNDREDS OF MANUFACTURERS SUPPORTED
- LEASING/MONTHLY RENTALS
- ITAR CERTIFIED SECURE ASSET SOLUTIONS

SERVICE CENTER REPAIRS

Experienced engineers and technicians on staff at our full-service, in-house repair center

*InstraView*SM REMOTE INSPECTION

Remotely inspect equipment before purchasing with our interactive website at www.instraview.com ↗

WE BUY USED EQUIPMENT

Sell your excess, underutilized, and idle used equipment. We also offer credit for buy-backs and trade-ins. www.artisanng.com/WeBuyEquipment ↗

LOOKING FOR MORE INFORMATION?

Visit us on the web at www.artisanng.com ↗ for more information on price quotations, drivers, technical specifications, manuals, and documentation

Contact us: (888) 88-SOURCE | sales@artisanng.com | www.artisanng.com