



Artisan Technology Group is your source for quality new and certified-used/pre-owned equipment

- FAST SHIPPING AND DELIVERY
- TENS OF THOUSANDS OF IN-STOCK ITEMS
- EQUIPMENT DEMOS
- HUNDREDS OF MANUFACTURERS SUPPORTED
- LEASING/MONTHLY RENTALS
- ITAR CERTIFIED SECURE ASSET SOLUTIONS

SERVICE CENTER REPAIRS

Experienced engineers and technicians on staff at our full-service, in-house repair center

*InstraView*SM REMOTE INSPECTION

Remotely inspect equipment before purchasing with our interactive website at www.instraview.com ↗

WE BUY USED EQUIPMENT

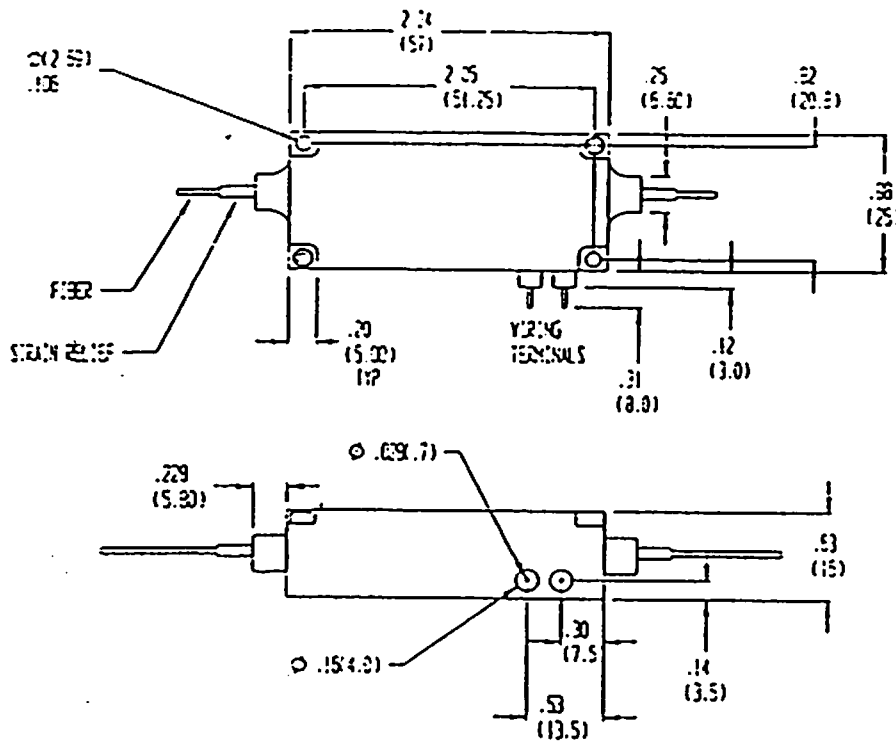
Sell your excess, underutilized, and idle used equipment. We also offer credit for buy-backs and trade-ins. www.artisanng.com/WeBuyEquipment ↗

LOOKING FOR MORE INFORMATION?

Visit us on the web at www.artisanng.com ↗ for more information on price quotations, drivers, technical specifications, manuals, and documentation

Contact us: (888) 88-SOURCE | sales@artisanng.com | www.artisanng.com

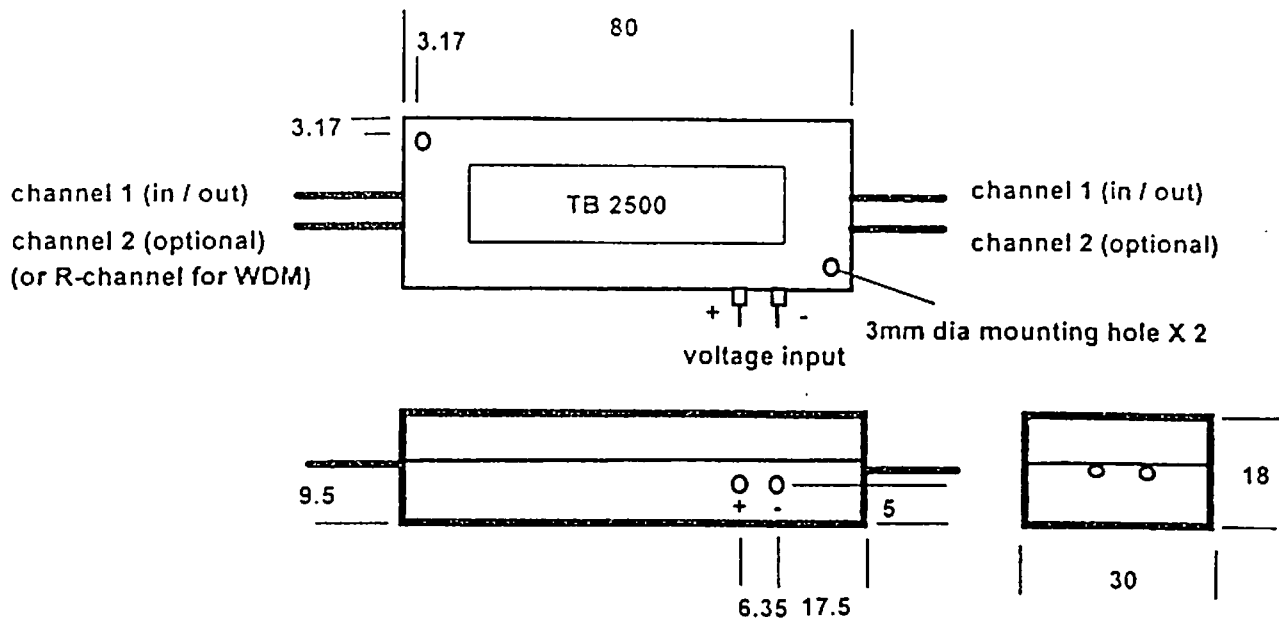
TB 2500 Tunable Fabry-Perot Filter



General Handling and Operating Instructions:

- (1) **Handling:** Although the TB2500 Fabry-Perot Filter is a rugged component, severe mechanical shock (e.g. generated by dropping the device from a height) could cause permanent damage to the filter. Therefore, as with other optical components, the TB2500 filter should be handled with care during mounting and setup of the device.
- (2) **Voltage Polarity:** Apply voltage of positive polarity to the input terminals only (red +, green -). DO NOT apply voltage of negative polarity as this may result in damage to the piezo actuator inside the package. Avoid sudden current surges, such as caused by shorting the terminals or connection to a high-current power supply.
- (3) **Input Voltage Range:** Applying 0 to +30 volts to the input terminals of the Fabry-Perot filter will tune the device over 3 to 4 wavelength orders (for Free Spectral Ranges).
- (4) **Mounting:** Two 3mm diameter mounting holes are provided for fixing the unit onto test jigs or printed circuit boards.

TB2500 Tunable Fabry-Perot Filter



General Handling and Operating Instructions:

- (1) **Handling:** Although the TB2500 Fabry-Perot Filter is a rugged component, severe mechanical shock (e.g. generated by dropping the device from a height) could cause permanent damage to the filter. Therefore, as with other optical components, the TB2500 filter should be handled with care during mounting and setup of the device.
- (2) **Voltage Polarity:** Apply voltage of positive polarity to the input terminals only (red +, green -). DO NOT apply voltage of negative polarity as this may result in damage to the piezo actuator inside the package. Avoid sudden current surges, such as caused by shorting the terminals or connection to a high-current power supply.
- (3) **Input Voltage Range:** Applying 0 to +30 volts to the input terminals of the Fabry-Perot filter will tune the device over 3 to 4 wavelength orders (or Free Spectral Ranges).
- (4) **Mounting:** Two 3mm diameter mounting holes are provided for fixing the unit onto test jigs or printed circuit boards.



Artisan Technology Group is your source for quality new and certified-used/pre-owned equipment

- FAST SHIPPING AND DELIVERY
- TENS OF THOUSANDS OF IN-STOCK ITEMS
- EQUIPMENT DEMOS
- HUNDREDS OF MANUFACTURERS SUPPORTED
- LEASING/MONTHLY RENTALS
- ITAR CERTIFIED SECURE ASSET SOLUTIONS

SERVICE CENTER REPAIRS

Experienced engineers and technicians on staff at our full-service, in-house repair center

*InstraView*SM REMOTE INSPECTION

Remotely inspect equipment before purchasing with our interactive website at www.instraview.com ↗

WE BUY USED EQUIPMENT

Sell your excess, underutilized, and idle used equipment. We also offer credit for buy-backs and trade-ins. www.artisanng.com/WeBuyEquipment ↗

LOOKING FOR MORE INFORMATION?

Visit us on the web at www.artisanng.com ↗ for more information on price quotations, drivers, technical specifications, manuals, and documentation

Contact us: (888) 88-SOURCE | sales@artisanng.com | www.artisanng.com