

**KOLLMORGEN**

X3  
AGND  
BTB / RTO  
BTB / RTO  
SW / SETP. 1+  
SW / SETP. 1-  
SW / SETP. 2+  
SW / SETP. 2-  
MONITOR 1  
MONITOR 2  
AGND  
DIGITAL-IN 1  
DIGITAL-IN 2  
PSTOP  
NSTOP  
ENABLE  
DIGITAL-OUT 1  
DIGITAL-OUT 2  
DGND



KSO 1  
KSO 2  
KSI -  
KSI +



X10



+24V

**KOLLMORGEN**

GND

**SERVOSTAR**

X4

*The compact,  
simple solution  
for 400 to 480 V  
applications*

Family of Digital  
Amplifiers



# SERVOSTAR<sup>®</sup> 600

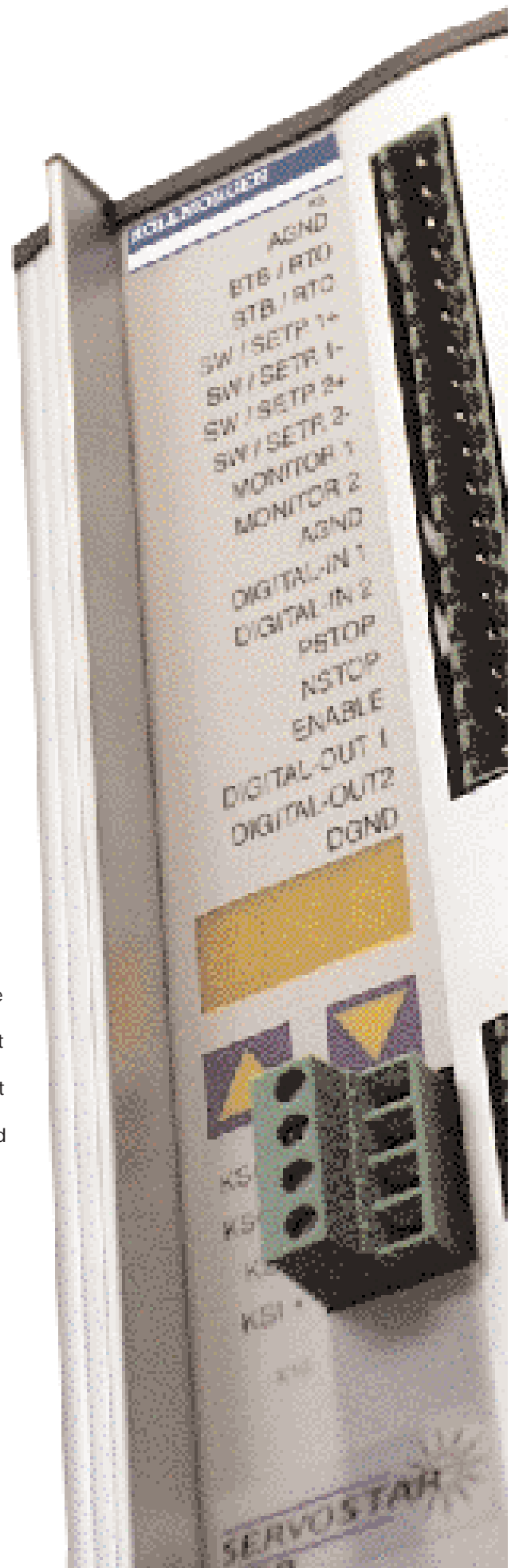
- A compact, easy-to-use digital amplifier with integrated power supply for 400 to 480 V applications
- Simple installation and set-up with "MOTIONLINK<sup>®</sup>" for SERVOSTAR<sup>®</sup> software to have you up and running fast
- Built-in line filter meets CE requirements

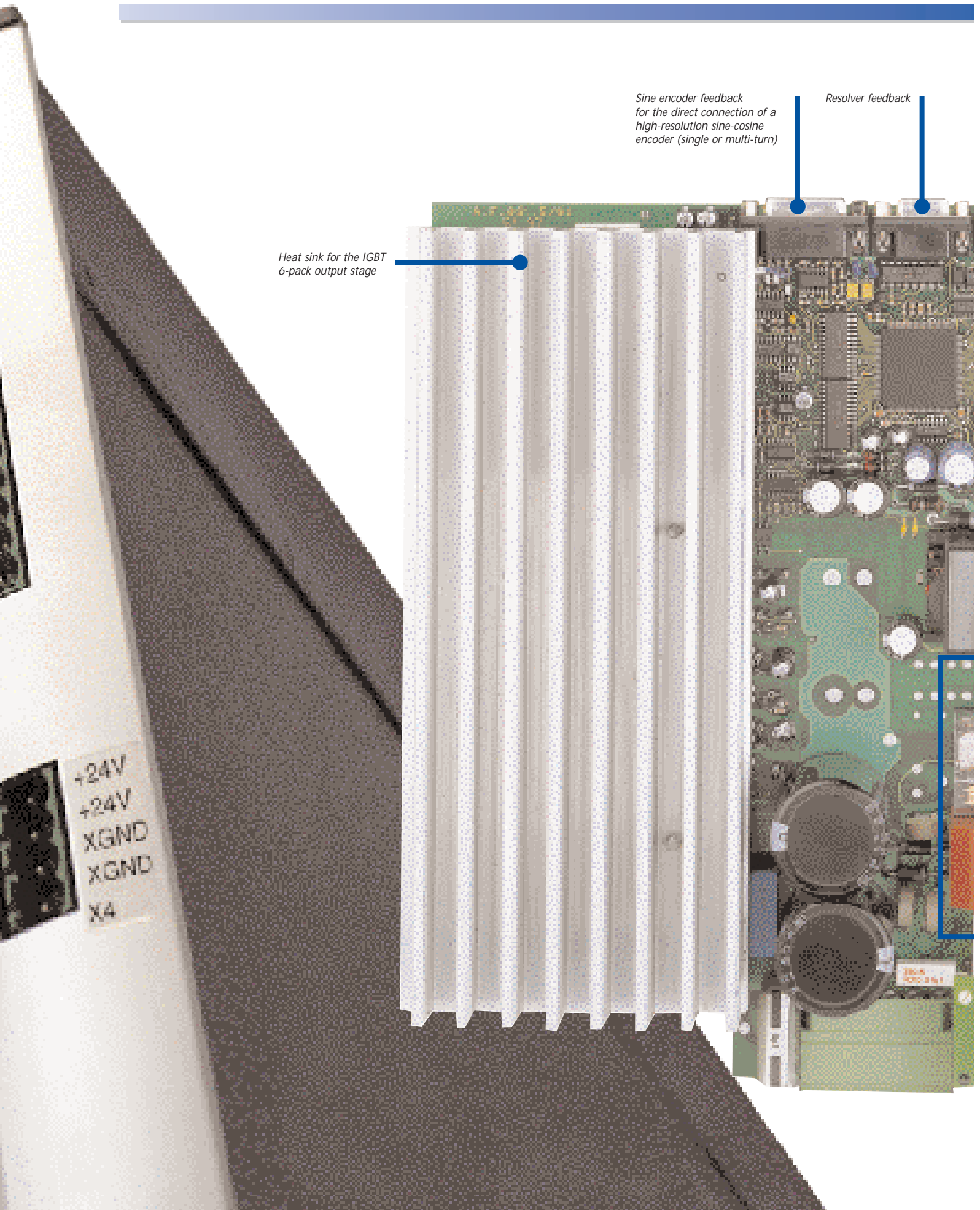
## A universe of motion control solutions

You know how your machine should work. After all, it's your design. And, motion control is a big part of it in terms of performance. SERVOSTAR 600 is different. Easy to specify, install and operate, it lets you concentrate on design solutions instead of struggling with system configurations.

With SERVOSTAR 600 you can meet or exceed your machine performance and cost expectations by specifying the most efficient motor and drive combination. With state-of-the-art DQ control and space vector modulation the SERVOSTAR 600 creates greater throughput for higher productivity and operational efficiency.

To complement SERVOSTAR 600, Kollmorgen offers the high performance Kollmorgen GOLDLINE™ BH series motors rated for 400 & 480 Volt operation. Together, you get universal motion control solutions that feature Kollmorgen's renowned quality, global service and experienced support.



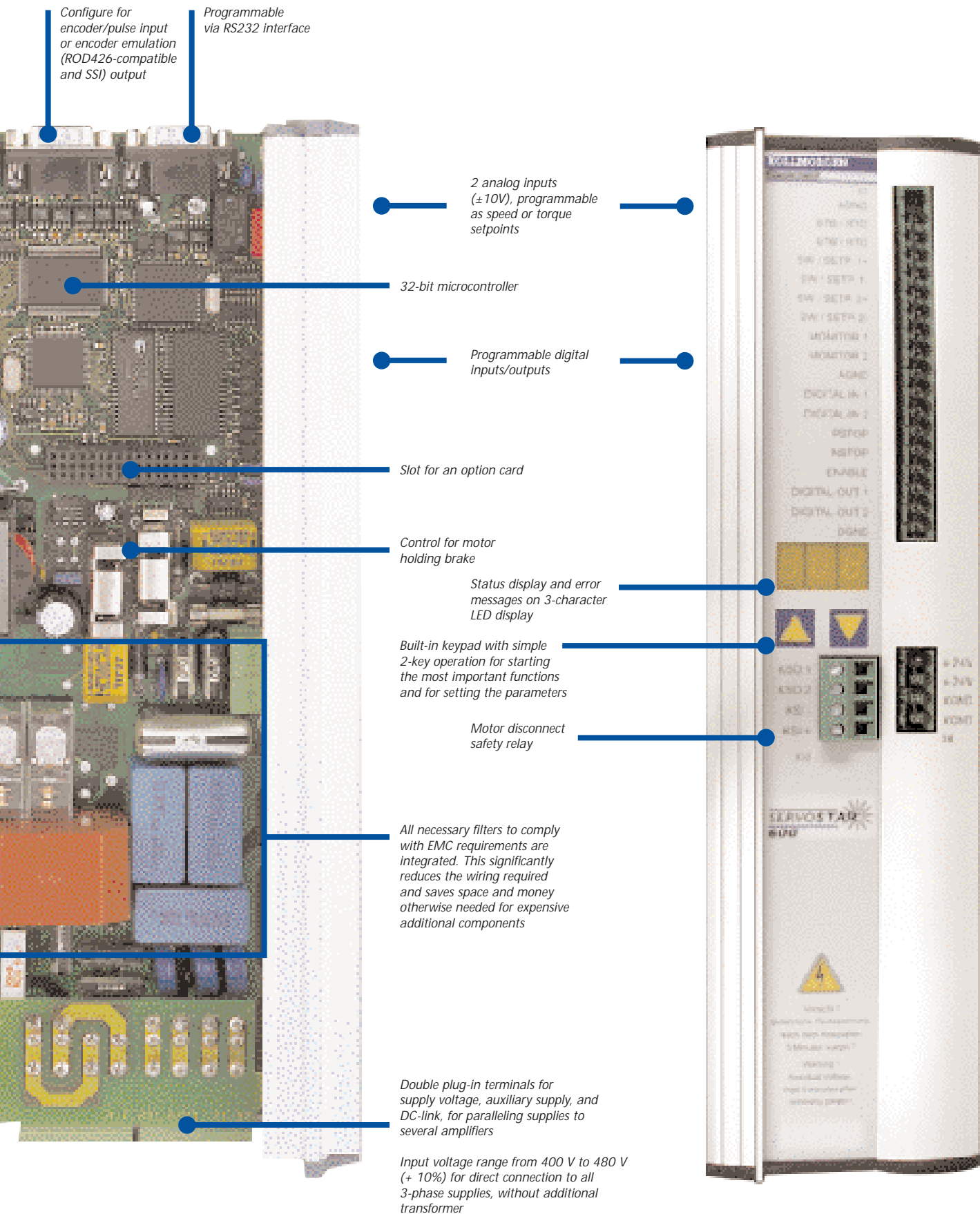


Heat sink for the IGBT 6-pack output stage

Sine encoder feedback for the direct connection of a high-resolution sine-cosine encoder (single or multi-turn)

Resolver feedback

# A look into the future...



## Easy to use features for fine-tuned performance

As a universal amplifier solution, SERVOSTAR 600 is a unique combination of technology and operational simplicity that offers outstanding value in a space-saving package. Engineered for ease of installation, SERVOSTAR 600's pluggable connectors, interface options and communications flexibility will have you up and running fast.

- **Fully digital processing**

For exceptional speed control, torque control and long term reliability

- **PI Plus (PDFF) or PI digital control loop options**

Provide the ultimate flexibility for simple to complex control tuning requirements

- **Feedback options**

Choose between rugged resolver or high accuracy sine encoder

- **Advanced Patented DQ Control and Torque Angle Control**

Increases torque and speed to enhance motor performance

- **Compact package**

Rugged, spacesaving metal enclosure provides protection against ESD and EMI

- **User tolerant**

Built in protection from overvolts, undervolts, overcurrent and overtemperature

- **Integrated Power supply**

Connects directly to 400 to 480 VAC

- **RS-232**

Unique multi-drop communications through RS-232 connection to first amplifier

- **Internal diagnostics**

To detect and identify system inconsistencies for quick analysis and troubleshooting

- **Accepts Analog, Pulse Direction, or Encoder Master Command**

Multiple methods allow user to choose the optimal one for the application

- **Motion Task and Homing**

Store 180 motion profiles in memory

- **Built-In Parameter Unit**

Allows set-up of basic parameters without a PC

- **Built-In CE Line Filter**

Lowers cost for CE implementation

- **Option Card Slot**

Allows easy format to add extra drive functions

- **I/O Option Card**

Adds 22 additional digital I/O

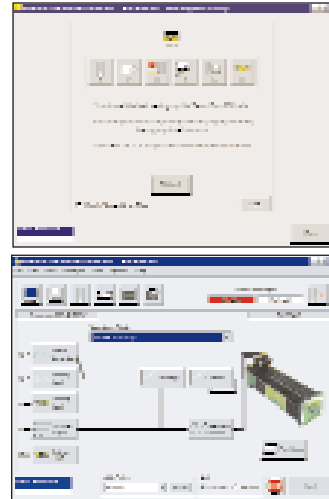
## Kollmorgen SERVOSTAR® 600 Ratings

Model	Continuous Current Amps RMS/phase	Peak Current Amps RMS/phase	Height mm (inches)	Width mm (inches)	Depth mm (inches)
S603	3	6	275 (10.83)	70 (2.76)	265 (10.43)
S606	6	12	275 (10.83)	70 (2.76)	265 (10.43)
S610	10	20	275 (10.83)	70 (2.76)	265 (10.43)

## “MOTIONLINK® for SERVOSTAR” PC Software

An intuitive, Windows™ - based user interface for quick “out-of-the-box” system set-up and real-time monitoring, the MOTIONLINK auto set-up environment walks even the first time user through line voltage, motor, operation mode and load tuning to make system configuration friendly and fast.

Oscilloscope and monitor functions allow you to graphically view real-time system performance data. For advanced users, MOTIONLINK lets you adjust individual parameters to customize system performance to your unique requirements.



MOTIONEERING™ is Kollmorgen's latest Windows™ - based systems sizing program. It provides a comprehensive method for the sizing of motor and drive components for a wide variety of applications. The program takes an advanced system's approach to the specific selection of motors, amplifiers and power supplies.

## Kollmorgen Sales Offices

E-mail: [servo@kollmorgen.com](mailto:servo@kollmorgen.com)  
Internet: [www.kollmorgen.com](http://www.kollmorgen.com)

### Motion Technologies Group

1-800-77 SERVO  
E-mail: [servo@kollmorgen.com](mailto:servo@kollmorgen.com)

#### Americas

Radford, VA  
Tel: (800) 77 SERVO  
Fax: (540) 731-0847

#### Europe & Middle East

Dusseldorf, Germany  
Tel: (49) 203 9979 0  
Fax: (49) 203 9979 155

#### Asia Pacific & Far East

Tianjin, China  
Tel: (86) 22 2627 1090  
Fax: (86) 22 2627 1093

Kollmorgen enjoys a reputation of excellence based on constant endeavors to update products. Information in this brochure is subject to change.

Windows is a registered trademark of Microsoft Corporation.  
Kollmorgen SERVOSTAR, MOTIONLINK®, MOTIONEERING, Kollmorgen GOLDLINE, Kollmorgen SILVERLINE, and PLATINUM are trademarks of Kollmorgen.

# KOLLMORGEN