



Artisan Technology Group is your source for quality new and certified-used/pre-owned equipment

- FAST SHIPPING AND DELIVERY
- TENS OF THOUSANDS OF IN-STOCK ITEMS
- EQUIPMENT DEMOS
- HUNDREDS OF MANUFACTURERS SUPPORTED
- LEASING/MONTHLY RENTALS
- ITAR CERTIFIED SECURE ASSET SOLUTIONS

SERVICE CENTER REPAIRS

Experienced engineers and technicians on staff at our full-service, in-house repair center

*InstraView*SM REMOTE INSPECTION

Remotely inspect equipment before purchasing with our interactive website at www.instraview.com ↗

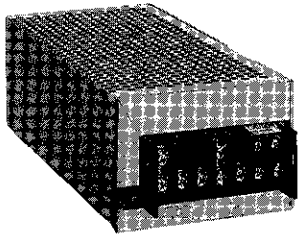
WE BUY USED EQUIPMENT

Sell your excess, underutilized, and idle used equipment. We also offer credit for buy-backs and trade-ins. www.artisanng.com/WeBuyEquipment ↗

LOOKING FOR MORE INFORMATION?

Visit us on the web at www.artisanng.com ↗ for more information on price quotations, drivers, technical specifications, manuals, and documentation

Contact us: (888) 88-SOURCE | sales@artisanng.com | www.artisanng.com



Universal AC Input

Radiated and Conducted EMI

Input Transient Protection

Power Factor and Harmonic Correction

Wide Range Output Adjustment

World wide Safety Agency Approvals

Optional Din Rail Mounting

5 Year Warranty

Lambda's new JWS series meets the demands of today's world wide industrial market with universal input, international agency approvals, and CE Marking. Reducing the risk of system failures the JWS has been engineered to meet input transients and brown-outs in compliance to EN61000-4 (2,-3,-4,-5,-6) as well as meeting EMI Curve B (for both radiated and conducted).

Available in six package sizes from 50-600 watts with output voltages ranging from 2 to 48 volts. Backed by Lambda's five year warranty the JWS series will prove to be the industrial choice for insured reliability and high quality, guaranteeing end-users maximum up-time.

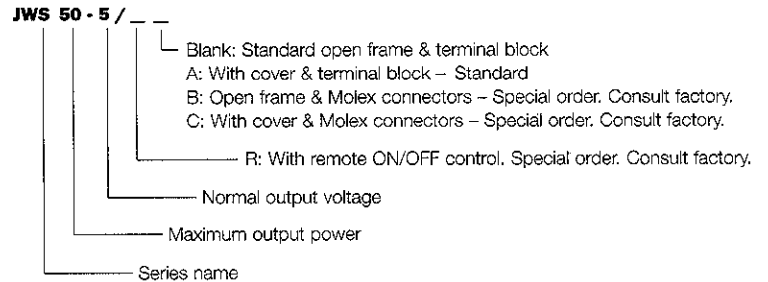
Similar products

		Page
ZWS	Low Cost PC Board	14
JFS	High Power Single Output	28
SV	Multiple Output	44
RWS-A	Lower Power	22

AC Input	85-265Vac, 47-63Hz.
DC Input	120-330VDC.
Efficiency	61% on 2V, 65% on 3.3V, 74% on 5.0V, 77% on 12.0 -15.0V, 80% on 24.0 -48.0V
Power Factor Correction	0.99 (Typical), EN61000-3-2.
Input Transient Protection ..	EN61000-4 (2,-3,-4,-5,-6). IEC1000-4 (2,-3,-4,-5,-6). IEC801- (2,-3,-4,-5).
EMI	Conducted and Radiated per: EN55022-B Curve B & FCC Class B.
Output Voltage Adj Range ..	±10% (+20% ~-10% for 300W/600W).
Line Regulation	0.5%.
Load Regulation	0.8%.
Output Ripple	120 mV p-p for 2, 3.3 & 5 volts. 150 mV p-p for 12, 15 & 24 volts. 200 mV p-p for 48 volts.
Parallel Operation	Active current sharing is achieved through a single wire connection. (300W/600W only).
Hold-up Time	20ms (typical).
Overcurrent Protection	Electronic current limiting circuit limits the output current to 105% of the maximum rated current with automatic recovery.
Overvoltage Protection	Non-crowbar, inverter shutdown type OV protection.
Cooling	Convection, Internal Fan (300W/600W)
Operating Temperature Range	-10°C to +50°C with derating above +40°C. -10°C to +60°C with derating above +50°C (300W/600W).
Storage Temperature	-30°C to +85°C.
Temperature Coefficient	Less than 0.02%.
Isolation	Input to Output – 3.0kVAC. Input to Chassis (FG) – 2.0kVAC. Output to Chassis (FG) – 500VAC.
Output Status Indicator	A green LED when DC output is "ON".
Remote On/Off	An open circuit or a voltage of 2 - 5V applied to the terminals will initiate turn-off. Optional for (50-150W).
Remote Sensing	(100W-600W).
Input and Output Connections	Barrier strip with clear plastic cover.
DIN Rail Mounting Bracket ..	LDIN50 (JWS50only).
Safety Agency Approval	UL1950, CSA950, EN60950, VDE0160, and CE mark (Low voltage Directive).
Warranty	5 years.

OUTPUT	POWER (W)	MAX CURRENT AMPS AT			MODEL
		40°	45°	50°	
2V (1.8-2.4)	120.0	60.0	60.0	60.0	JWS300-2
	240.0	120.0	120.0	120.0	JWS600-2
3.3V (2.85-3.63)	33.0	10.0	10.0	8.0	JWS50-3/A
	49.5	15.0	12.0	9.0	JWS75-3/A
	66.0	20.0	16.0	12.0	JWS100-3/A
	99.0	30.0	24.0	18.0	JWS150-3/A
5V (4.50-5.5)	198.0	60.0	60.0	60.0	JWS300-3
	396.0	120.0	120.0	120.0	JWS600-3
	50.0	10.0	10.0	6.0	JWS50-5/A
	75.0	15.0	12.0	9.0	JWS75-5/A
	100.0	20.0	16.0	12.0	JWS100-5/A
	150.0	30.0	24.0	18.0	JWS150-5/A
12V (10.8-13.2)	300.0	60.0	60.0	60.0	JWS300-5
	600.0	120.0	120.0	120.0	JWS600-5
	51.6	4.3	4.3	3.4	JWS50-12/A
	75.6	6.3	5.0	3.8	JWS75-12/A
	102.0	8.5	6.8	5.1	JWS100-12/A
	156.0	13.0	10.4	7.8	JWS150-12/A
15V (13.5-16.5)	324.0	27.0	27.0	27.0	JWS300-12
	645.0	53.0	53.0	53.0	JWS600-12
	52.5	3.5	3.5	2.8	JWS50-15/A
	75.0	5.0	4.0	3.0	JWS75-15/A
24V (21.6-26.4)	105.0	7.0	5.6	4.2	JWS100-15/A
	150.0	10.0	8.0	6.0	JWS150-15/A
	330.0	22.0	22.0	22.0	JWS300-15
	645.0	43.0	43.0	43.0	JWS600-15
48V (43.2-52.8)	52.8	2.2	2.2	1.7	JWS50-24/A
	76.8	3.2	2.5	1.9	JWS75-24/A
	108.0	4.5	3.6	2.7	JWS100-24/A
48V (43.2-52.8)	156.0	6.5	5.2	3.9	JWS150-24/A
	52.8	1.1	1.1	0.88	JWS50-48/A
	76.8	1.6	1.3	0.96	JWS75-48/A
48V (43.2-52.8)	100.8	2.1	1.7	1.26	JWS100-48/A
	158.4	3.3	2.6	1.98	JWS150-48/A

Options for JWS50 - JWS150 only.



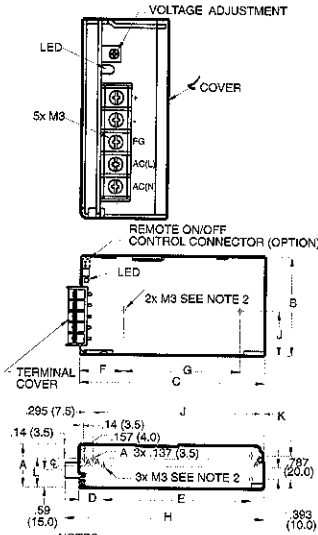
*Connector type is JWS50 & JWS75 only.



JWS50/JWS75

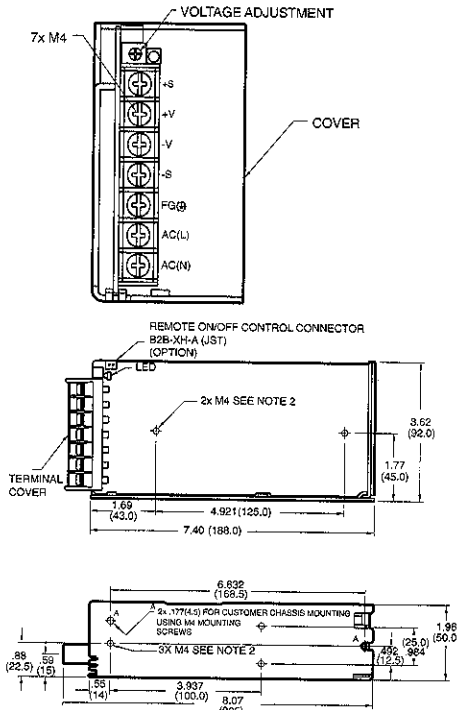
JWS100

JWS150

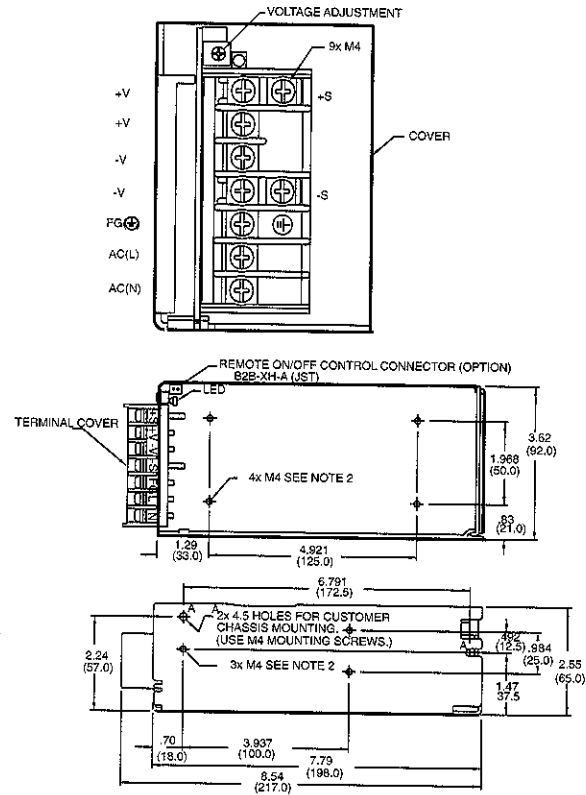


- NOTES:
1. DIMENSIONS ARE IN INCHES EXCEPT DIMENSIONS () ARE IN MM.
 2. 5x M3 EMBOSS, TAPPED AND COUNTERSUNK HOLES FOR CUSTOMER MFG. SCREWS MUST NOT PROTRUDE INTO POWER SUPPLY BY MORE THAN .23(6).
 3. WEIGHT: JWS50-360 GRAMS, JWS75-450 GRAMS.

	MODEL	
	JWS50	JWS75
A	1.46 (37.0)	1.65 (42.0)
B	3.34 (85.0)	3.62 (92.0)
C	6.22 (159.0)	6.88 (176.0)
D	.82 (21.0)	.59 (15.0)
E	5.00 (127.0)	4.92 (125.0)
F	1.47 (37.5)	1.18 (30.0)
G	3.97 (100.0)	4.32 (110.0)
H	6.75 (171.0)	7.36 (187.0)
J	5.63 (143.0)	6.25 (159.0)
K	.16 (4.0)	.19 (5.0)
L	.28 (7.0)	.18 (4.5)



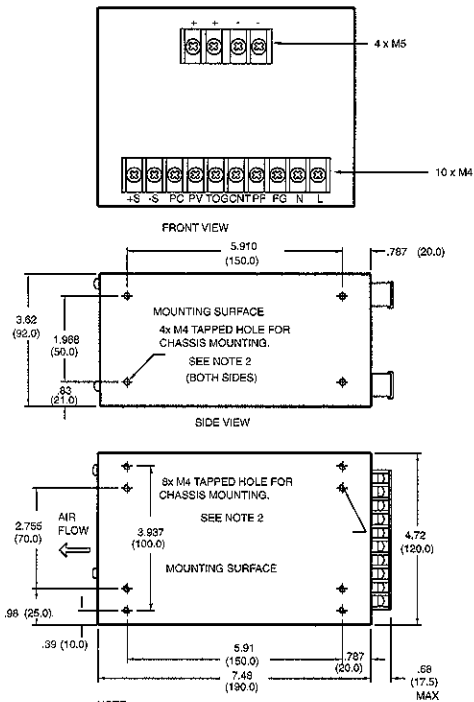
- NOTE:
1. DIMENSIONS ARE IN INCHES EXCEPT DIMENSIONS () ARE IN MM.
 2. 7x M4 EMBOSS, TAPPED AND COUNTERSUNK HOLES FOR CUSTOMER MFG. SCREWS MUST NOT PROTRUDE INTO POWER SUPPLY BY MORE THAN .23(6).
 3. WEIGHT: 850 GRAMS.



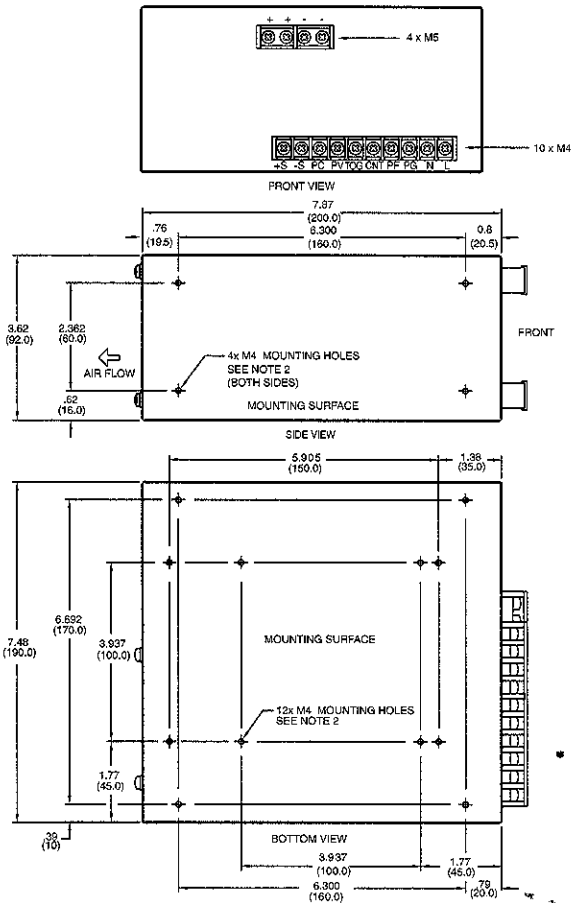
- NOTE:
1. DIMENSIONS ARE IN INCHES EXCEPT DIMENSIONS () ARE IN MM.
 2. 9x M4 EMBOSS, TAPPED AND COUNTERSUNK HOLES FOR CUSTOMER MFG. SCREWS MUST NOT PROTRUDE INTO POWER SUPPLY BY MORE THAN .23(6).
 3. WEIGHT: 950 GRAMS.

JWS300

JWS600



- NOTE:
1. DIMENSIONS ARE IN INCHES EXCEPT DIMENSIONS () ARE IN MM.
 2. 16x M4 TAPPED HOLES FOR CUSTOMER MOUNTING. SCREWS MUST NOT PROTRUDE INTO P.S. MORE THAN .286 (6MM)
 3. CUSTOMER TO PROVIDE ADEQUATE CLEARANCE NEAR VENT HOLES FOR AIR FLOW.
 4. WEIGHT: NET 5.0 LBS, SHIPPING 6.0 LBS.



- NOTES:
1. DIMENSIONS ARE IN INCHES EXCEPT DIMENSIONS () ARE IN MM.
 2. 12x M4 TAPPED HOLES FOR CUSTOMER MOUNTING. SCREWS MUST NOT PROTRUDE INTO P.S. MORE THAN .286 (6MM)
 3. CUSTOMER TO PROVIDE ADEQUATE CLEARANCE NEAR VENT HOLES FOR AIR FLOW.
 4. WEIGHT: NET 9.0 LBS, SHIPPING 10.0 LBS.



Artisan Technology Group is your source for quality new and certified-used/pre-owned equipment

- FAST SHIPPING AND DELIVERY
- TENS OF THOUSANDS OF IN-STOCK ITEMS
- EQUIPMENT DEMOS
- HUNDREDS OF MANUFACTURERS SUPPORTED
- LEASING/MONTHLY RENTALS
- ITAR CERTIFIED SECURE ASSET SOLUTIONS

SERVICE CENTER REPAIRS

Experienced engineers and technicians on staff at our full-service, in-house repair center

*InstraView*SM REMOTE INSPECTION

Remotely inspect equipment before purchasing with our interactive website at www.instraview.com ↗

WE BUY USED EQUIPMENT

Sell your excess, underutilized, and idle used equipment. We also offer credit for buy-backs and trade-ins. www.artisanng.com/WeBuyEquipment ↗

LOOKING FOR MORE INFORMATION?

Visit us on the web at www.artisanng.com ↗ for more information on price quotations, drivers, technical specifications, manuals, and documentation

Contact us: (888) 88-SOURCE | sales@artisanng.com | www.artisanng.com