



Artisan Technology Group is your source for quality new and certified-used/pre-owned equipment

- FAST SHIPPING AND DELIVERY
- TENS OF THOUSANDS OF IN-STOCK ITEMS
- EQUIPMENT DEMOS
- HUNDREDS OF MANUFACTURERS SUPPORTED
- LEASING/MONTHLY RENTALS
- ITAR CERTIFIED SECURE ASSET SOLUTIONS

SERVICE CENTER REPAIRS

Experienced engineers and technicians on staff at our full-service, in-house repair center

*InstraView*SM REMOTE INSPECTION

Remotely inspect equipment before purchasing with our interactive website at www.instraview.com ↗

WE BUY USED EQUIPMENT

Sell your excess, underutilized, and idle used equipment. We also offer credit for buy-backs and trade-ins. www.artisanng.com/WeBuyEquipment ↗

LOOKING FOR MORE INFORMATION?

Visit us on the web at www.artisanng.com ↗ for more information on price quotations, drivers, technical specifications, manuals, and documentation

Contact us: (888) 88-SOURCE | sales@artisanng.com | www.artisanng.com

INSTRUCTION MANUAL

REGULATED POWER SUPPLIES

LOS Z SERIES

SPECIFICATIONS AND FEATURES

DC OUTPUT — Voltage regulated for line and load. For voltage and current ratings see table I below.

TABLE I

MODEL	VOLTAGE RANGE	MAXIMUM CURRENT (AMPS) AT AMBIENT TEMPERATURE		
		40°C	50°C	60°C
LOS-Z-2	2 ±5%	3.0	2.4	1.8
LOS-Z-5	5 ±5%	3.0	2.4	1.8
LOS-Z-6	6 ±5%	2.5	2.1	1.6
LOS-Z-12	12 ±5%	1.6	1.3	1.0
LOS-Z-15	15 ±5%	1.4	1.2	1.0
LOS-Z-20	20 ±5%	1.0	0.8	0.6
LOS-Z-24	24 ±5%	0.9	0.75	0.55
LOS-Z-28	28 ±5%	0.8	0.65	0.45

Current range must be chosen to suit the appropriate maximum ambient temperature. Current ratings apply for entire voltage range.

REGULATED VOLTAGE OUTPUT

Regulation (line).....	0.15% for input variations from 105-125, 125-105, 210-250, or 250-210 volts AC.
Regulation (load).....	0.15% for load variations from no load to full load or full load to no load.
Ripple and Noise.....	1.5mV rms, 5mV peak to peak with either positive or negative terminal grounded.
Temperature Coefficient.....	0.03%/°C
Remote Programming External Resistor	
LOS-Z-2.....	Nominal 1000 ohms/volt output. The programming coefficient is negative. Increasing resistance decreases output voltage. Use a low temperature coefficient resistor to assure most stable operation.
LOS-Z-5 through LOS-Z-28.....	Nominal 200 ohms/volt output. Increasing resistance increases output voltage. Use a low temperature coefficient resistor to assure most stable operation.
Programming Voltage.....	One-to-one voltage change. The programming supply must have a reverse current capability of 6 ma min. Programming supply need not have reverse current capability when programming LOS-Z-2.
Remote Sensing.....	Provision is made for remote sensing to eliminate the effect of power output lead resistance on DC regulation. Sensing leads should be a twisted pair to minimize AC pickup. A 2.5 mf elect. capacitor may be required between output terminals and sense terminals to reduce noise pickup.

OVERSHOOT — No overshoot under conditions of power turn-on, turn-off, or power failure.

AC INPUT — 105-125 or 210-250 volts AC at 47-440 Hz. Standard LOS-Z power supplies are factory wired for 105-125 volt input, but are available factory wired for 210-250 volt input on request. See figure 1 and schematic diagram for rewiring of AC input. Input power 60 Watts*. Ratings apply for 57-63 Hz input. For 47-53 Hz input derate current 10% for each ambient temperature given in table I. For 63-440 Hz input consult factory.

*With output loaded to full current rating and input voltage 125 volts AC, 60 Hz.

OVERLOAD PROTECTION — Automatic electronic current limiting circuit, limits output current to a safe value, protecting load and power supply when external overloads and direct shorts occur.

INPUT AND OUTPUT CONNECTIONS — See outline drawing for location.

- AC input Terminals on transformer
- Ground Terminal on transformer
- DC output Turret terminal on printed circuit board
- Sensing Turret terminal on printed circuit board
- Overvoltage Protector Quick disconnect terminal on printed circuit board with mating connector attached.

OPERATING AMBIENT TEMPERATURE RANGE AND DUTY CYCLE — Continuous duty from 0°C to +60°C ambient with corresponding load current ratings for all modes of operation.

STORAGE TEMPERATURE — -20°C to +85°C

DC OUTPUT CONTROL — Screwdriver voltage adjust control permits adjustment of DC output voltage. See outline drawing for location of control.

GUARANTEE — 60 day guarantee from date of shipment materials and labor.

PHYSICAL DATA

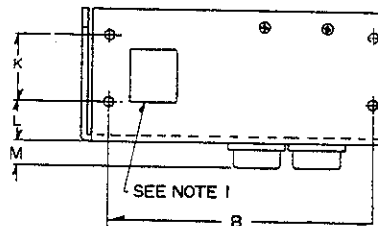
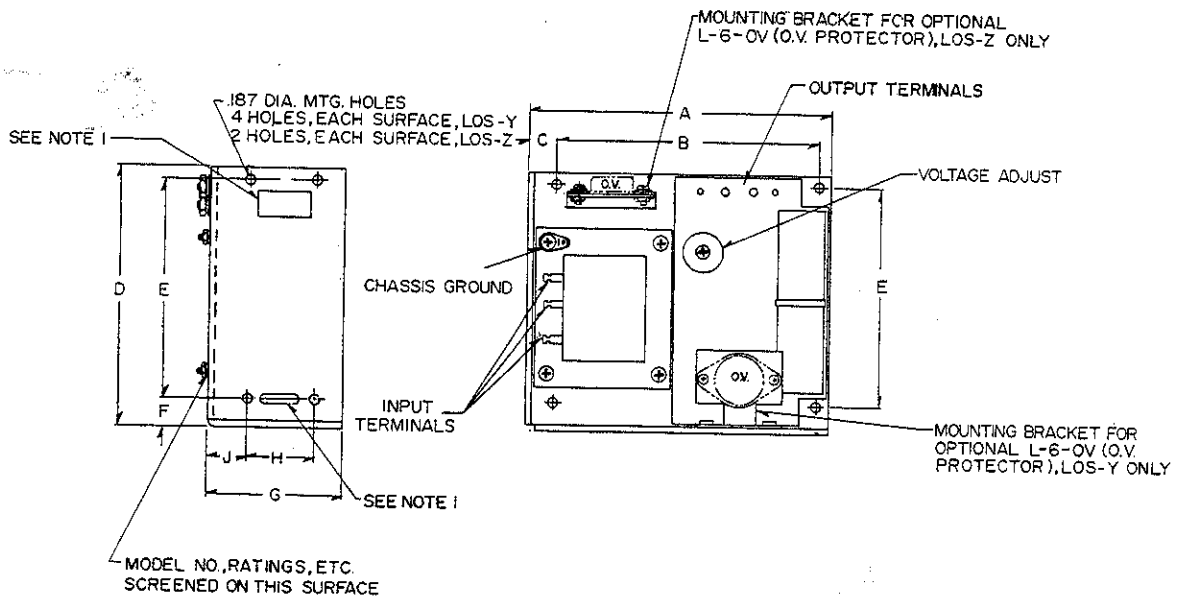
- Size 4-7/8" x 4" x 1-5/8"
- Weight 2 lbs. net; 2-1/4 lbs. shipping
- Finish Gray, FED. STD. 595 No. 26081

MOUNTING — Three surfaces, each with clearance mounting holes, can be utilized for mounting this unit. Transistors, diodes, and SCR's mounted on chassis must not contact any conductive material. Air circulation is required when unit is mounted in confined areas. Refer to Outline for mounting details.

"J" OPTION — Standard LOS power supplies can be obtained for 90-110 VAC, 47-440 Hz input. For 47-53 Hz input derate current 10% for each ambient temperature given in table I. For 63-440 Hz input consult factory.

ACCESSORIES

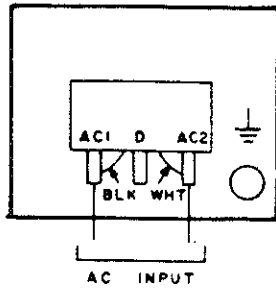
Overvoltage protector L-6-OV series Overvoltage Protectors are available for use with all models.



NOTES
 I. CUSTOMER MUST PROVIDE CLEARANCE IN HIS MOUNTING SURFACE FOR VENT HOLES TO ALLOW FOR AIR CIRCULATION.

MODEL	DIMENSIONS												
	A	B	C	D	E	F	G	H	J	K	L	M	
LOS-Z	4 7/8	4 15/16	1/2	4	3 3/16	3/8	1 5/8	0	3/4	0	3/4	15/32	
LOS-Y	5 5/8	4 7/8	1/2	4 7/8	4 15/16	1/2	2 1/2	1 1/4	3/4	1 1/4	3/4	15/32	

Outline Drawing



* AC INPUT CONNECTION SHOWN IS FOR 105-125VAC
 FOR 210-250V INPUT, DISCONNECT BLK & WHT TRANSFORMER
 LEADS FROM TERMS. AC1 & AC2 AND RECONNECT BOTH LEADS
 TO TERM D

Figure 1. AC Input Connection.

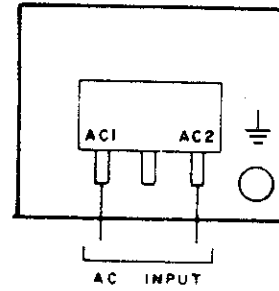
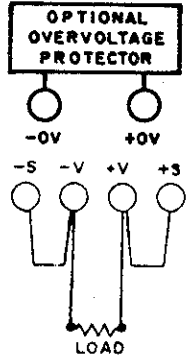
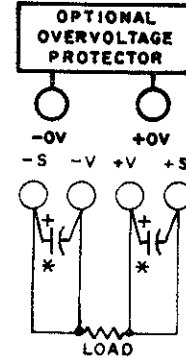


Figure 2. AC Input Connection, "J" Option.



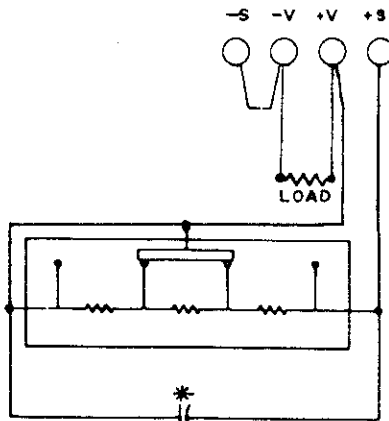
(A) LOCAL SENSING



(B) REMOTE SENSING

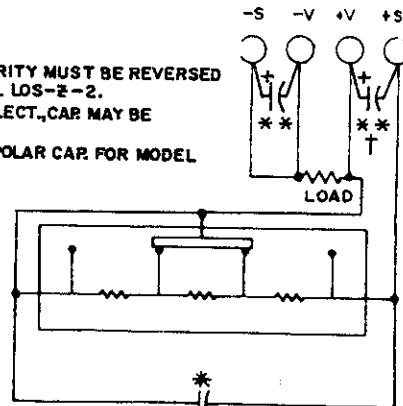
* A 2.5MF, ELECT., CAP. MAY BE REQUIRED.

Figure 3. DC Output Connection.



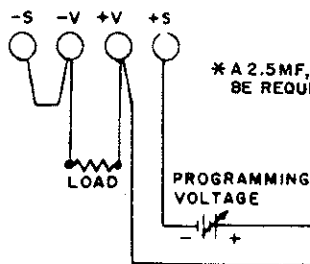
(A) LOCAL SENSING

* CAP. POLARITY MUST BE REVERSED
 FOR MODEL LOS-Z-2.
 * * A 2.5MF, ELECT., CAP MAY BE
 REQUIRED.
 † USE NON-POLAR CAP FOR MODEL
 LOS-Z-2.

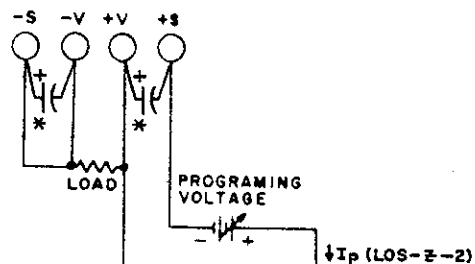


(B) REMOTE SENSING

Figure 4. Programmed Voltage, With External Resistor

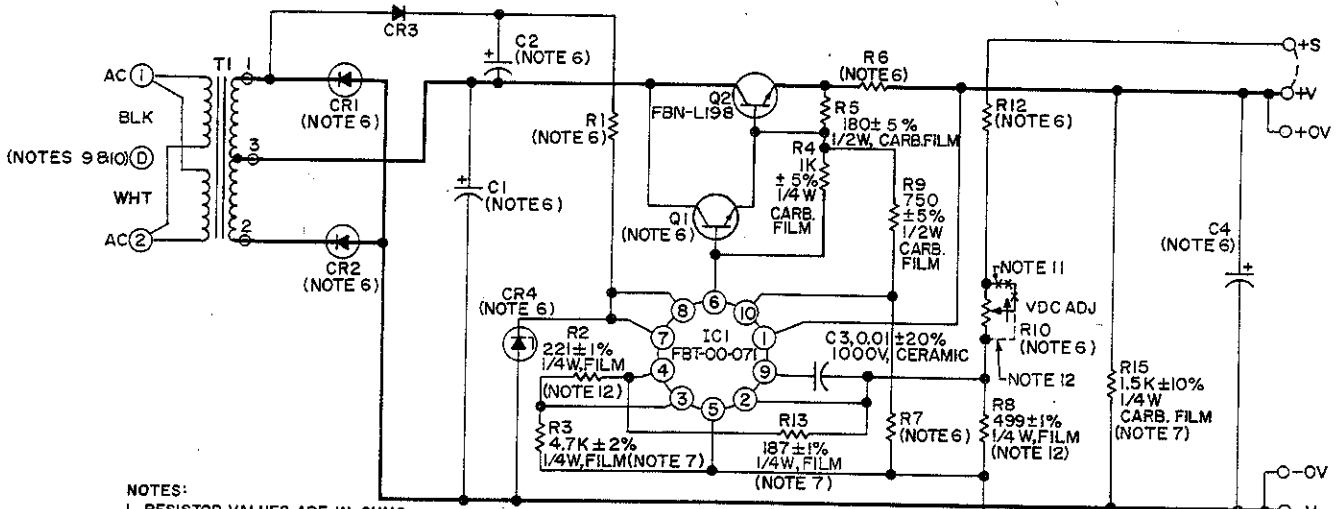


(A) LOCAL SENSING $\rightarrow I_p$ (EXCEPT LOS-Z-2)



(B) REMOTE SENSING $\rightarrow I_p$ (EXCEPT LOS-Z-2)

Figure 5. Programmed Voltage, With External Programming Voltage Source.



- NOTES:**
- RESISTOR VALUES ARE IN OHMS.
 - CAPACITOR VALUES ARE IN MICROFARADS.
 - DESIGNATIONS ARE LAMBDA PART NUMBERS.
 - SYMBOLS:
 - ↑ INDICATES CLOCKWISE ROTATION OF SHAFT.
 - INDICATES CONNECTION TO CHASSIS.
 - LAMBDA PART NO. FBL-00-030; USE IN4002 DIODE FOR REPLACEMENT UNLESS OTHERWISE NOTED.
 - INDICATES TERMINAL ON PRINTED CIRCUIT BOARD.
 - INDICATES ACTUAL UNIT MARKING.
 - FOR OPERATION AT 47-53Hz, DERATE CURRENT BY 10%. FOR OPERATION AT 63-440Hz, CONSULT FACTORY.
 - SEE TABLE II FOR COMPONENT VALUES.
 - R3, R13 & R15 ONLY USED ON MODEL LOS-Z-2.
 - T1 PRIMARY CONNECTION SHOWN IS FOR 105-125 VAC INPUT. FOR 210-250 VAC INPUT; DISCONNECT BLK & WHT TRANSFORMER LEADS FROM TERMS AC1 & AC2 AND RECONNECT BOTH LEADS TO TERM D.
 - "J" OPTION UNITS HAVE SINGLE T1 PRIMARY. AC INPUT IS 90-110 VAC.
 - NOT USED ON MODEL LOS-Z-2.
 - ONLY USED ON MODEL LOS-Z-2.
 - R2 IS 562, R8 IS 4.7K ± 2%, 1/4W ON LOS-Z-2.

FOR WIRING OF POWER SUPPLY TO LOAD REFER TO SUPPLY-TO-LOAD WIRING DIAGRAMS
 DOTTED CONNECTIONS SHOWN INDICATE JUMPERS IN PLACE FOR LOCAL SENSING CONNECTION.

**SCHEMATIC DIAGRAM
 REGULATED POWER SUPPLY**
 MODELS
LOS-Z SERIES

LAMBDA
 ELECTRONICS
 MELVILLE, NEW YORK

DIVISION OF **Veeco** INSTRUMENTS INC.

**TABLE II
 SCHEMATIC DATA REFERENCES
 MODELS LOS-Z-2 THRU LOS-Z-28**

Models	Schematic Components										
	C1	C2	C4	CR1, CR2	CR4	Q1	R1	R6	R7	R10	R12
	-10+75% ELECT	-10+75% ELECT	-10+75% ELECT	*FBL-00-	*FBM-Z	*FBN-	±3% 3W WW	+5% WW	1/2W	±10% 1-1/2W WW	±10% 1/4W FILM
LOS-Z-2	6900 mf 15 vdc	47 mf 35 vdc	330 mf 25 vdc	092	155	L113	650	0.10 3W	2.2K ±2% FILM	400 ±5%	Jumper
LOS-Z-5	6900 mf 15 vdc	47 mf 35 vdc	330 mf 25 vdc	092	155	L113	650	0.10 2W	4.3K ±5% COMP	400 ±5%	332
LOS-Z-6	6900 mf 15 vdc	47 mf 35 vdc	330 mf 25 vdc	092	155	L113	650	0.10 2W	5.1K ±5% COMP	400 ±5%	499
LOS-Z-12	3500 mf 30 vdc	47 mf 35 vdc	220 mf 50 vdc	094	154	L109	2.5K	0.30 2W	10K ±5% COMP	1.0K	1.47K
LOS-Z-15	3500 mf 30 vdc	47 mf 60 vdc	220 mf 50 vdc	094	105	L109	3.6K	0.30 2W	13K ±5% COMP	1.2K	1.91K
LOS-Z-20	2200 mf 60 vdc	47 mf 60 vdc	100 mf 60 vdc	094	127	L109	4.5K	0.39 2W	18K ±10% COMP	1.2K	3.0K ±5%
LOS-Z-24	2200 mf 60 vdc	47 mf 60 vdc	100 mf 60 vdc	094	NOT USED	L109	5K	0.39 2W	22K ±10% COMP	1.8K	3.48K
LOS-Z-28	2200 mf 60 vdc	47 mf 60 vdc	100 mf 60 vdc	094	NOT USED	L109	8K	0.51 2W	27K ±10% COMP	1.8K	4.32K

*Lambda part no.



Artisan Technology Group is your source for quality new and certified-used/pre-owned equipment

- FAST SHIPPING AND DELIVERY
- TENS OF THOUSANDS OF IN-STOCK ITEMS
- EQUIPMENT DEMOS
- HUNDREDS OF MANUFACTURERS SUPPORTED
- LEASING/MONTHLY RENTALS
- ITAR CERTIFIED SECURE ASSET SOLUTIONS

SERVICE CENTER REPAIRS

Experienced engineers and technicians on staff at our full-service, in-house repair center

*InstraView*SM REMOTE INSPECTION

Remotely inspect equipment before purchasing with our interactive website at www.instraview.com ↗

WE BUY USED EQUIPMENT

Sell your excess, underutilized, and idle used equipment. We also offer credit for buy-backs and trade-ins. www.artisanng.com/WeBuyEquipment ↗

LOOKING FOR MORE INFORMATION?

Visit us on the web at www.artisanng.com ↗ for more information on price quotations, drivers, technical specifications, manuals, and documentation

Contact us: (888) 88-SOURCE | sales@artisanng.com | www.artisanng.com