



Artisan Technology Group is your source for quality new and certified-used/pre-owned equipment

- FAST SHIPPING AND DELIVERY
- TENS OF THOUSANDS OF IN-STOCK ITEMS
- EQUIPMENT DEMOS
- HUNDREDS OF MANUFACTURERS SUPPORTED
- LEASING/MONTHLY RENTALS
- ITAR CERTIFIED SECURE ASSET SOLUTIONS

SERVICE CENTER REPAIRS

Experienced engineers and technicians on staff at our full-service, in-house repair center

*InstraView*SM REMOTE INSPECTION

Remotely inspect equipment before purchasing with our interactive website at www.instraview.com ↗

WE BUY USED EQUIPMENT

Sell your excess, underutilized, and idle used equipment. We also offer credit for buy-backs and trade-ins. www.artisanng.com/WeBuyEquipment ↗

LOOKING FOR MORE INFORMATION?

Visit us on the web at www.artisanng.com ↗ for more information on price quotations, drivers, technical specifications, manuals, and documentation

Contact us: (888) 88-SOURCE | sales@artisanng.com | www.artisanng.com

Non-Adjustable Flow Switches



M-64 Series

Fixed setting flow switch
with in-line flow

Features

- In-line flow switch with Low PD features.
- Low pressure drop features.
- Senses increasing or decreasing flow.
- Very accurate custom flow settings.
- Hermetically sealed.
- Universal mounting.

Applications

- Sample flow monitoring.
- Alarm actuation.
- Purge flows.
- Loss of flow protection.
- Semiconductor etch tools.
- Laser cooling equipment.

Operation

The operating principle is based on a magnetic piston which responds only to the motion of fluids within the line, not to static or system pressures. In the presence of fluid flow, controlled movement of the piston actuates an external hermetically sealed reed switch. This switch can be used to actuate audible or visual alarms, as well as relays, or other controls.

Custom Versions Available

Malema welcomes the opportunity to apply its flow sensor experience to work for its customers. Please contact the factory for any special requirements; such as ports, extreme temperature and pressure capabilities, etc.

More Product Information

To receive additional information about the M-64 non-adjustable flow switch, please call Malema at 1-800-637-6418. Detailed information can also be downloaded from the company's web site at <http://www.malema.com>.

Calibration Range *

Water: 0.1 to 7.0 gpm
Air: 1.0 to 70 scfm

* For lower and higher trip points contact factory.
Maximum flows through switch are higher.

Specifications

Set Point Accuracy: $\pm 10\%$ max.
Repeatability: $\pm 2\%$
Hysteresis: $\pm 15\%$

Material Versions *

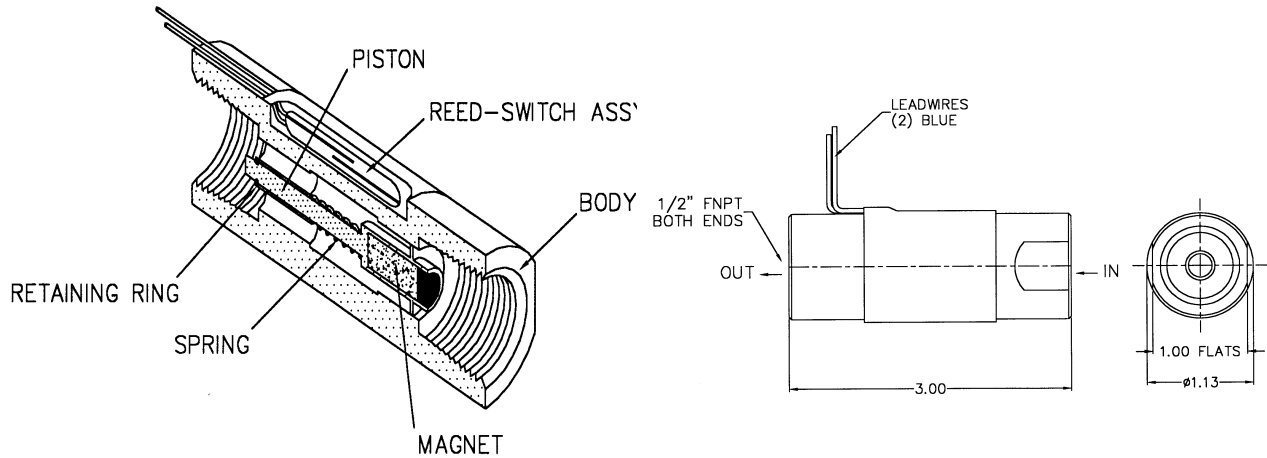
- Brass
 - PVC
 - 316 Stainless Steel
 - PTFE
- * Other materials available on request.

Port Sizes

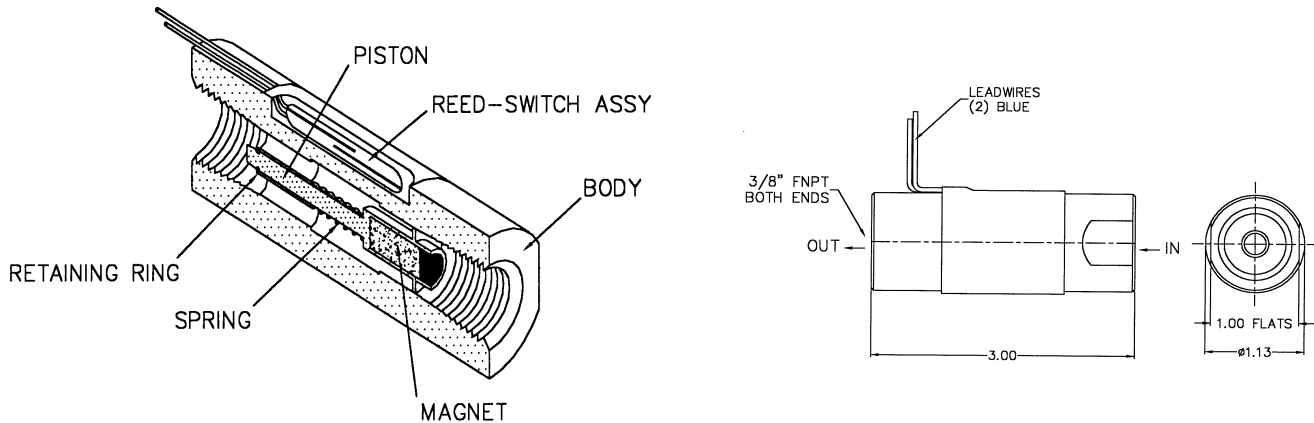
- 3/8" FNPT
- 1/2" FNPT

Cut Away and Dimensional Drawings

*Illustrated is the M-64 Model with 1/2" FNPT.**



*Illustrated is the M-64 Model with 3/8" FNPT.**



**These dimensions apply to Brass and 316SS Units.*

IMPORTANT NOTE: OD for PVC and TEFLON Units is 1.5" OD

Non-Adjustable Flow Switches

Fixed Flow Setting Information

This model is a FIXED flow switch. The flow set point is fixed at the factory and is NOT field adjustable. Proper calibration of the set point requires the following information. When purchasing a flow switch, use the "Set Point Calibration" form on page i-vi or provide this information on the purchase order.

- Calibration set point,
- Increasing or decreasing flow,
- Fluid type (i.e. liquid or gas),
- Density or specific gravity,
- Viscosity,
- System pressure and temperature,
- Flow direction (i.e. upward or downward), and
- Mounting orientation (i.e. horizontal or vertical).

Electrical

- SPST: DC Resistive: 10 Watts, AC Resistive: 10 VA.
Switching Current: 0.5A.
Carrying Current: 1.2A.
- SPDT: DC Resistive: 3 Watts, AC Resistive: 3 VA.
Switching Current: 0.25A.
Carrying Current: 0.5A.

Cv at typical set points

Contact factory for pressure drop and Cv data.

Installation

For proper operation fluid flow must be in the inlet port and out the outlet port. Switch may be universally mounted in any orientation.

Standard Specifications

Material	Max. Pressure (psi)	Max. Temperature (C/F)	Wetted Parts
Brass	1,500	149/300	Brass, 316SS, Epoxy
316SS	2,500	149/300	316SS, Epoxy
PVC	200	60/140	PVC, 316SS
PTFE	200	60/140	PTFE, PTFE Coated Stainless Spring

Ordering Information

Standard Part Numbering											
M	-	Model	-	Material	Port	Switch	-		Piston Type	-	
M	-	64	-	S	3	1	-	0	0	0	XXX
		64		B - Brass S - 316SS V - PVC T - PTFE	3 - 3/8" 4 - 1/2"	1 - SPST N.O. 2 - SPST N.C. 3 - SPDT		Future Option	0 - 316SS/Epoxy 1 - PTFE 2 - all 316SS	Future Option	Unique numbering from 001 to 999 to identify settings and other custom requirements.



Artisan Technology Group is your source for quality new and certified-used/pre-owned equipment

- FAST SHIPPING AND DELIVERY
- TENS OF THOUSANDS OF IN-STOCK ITEMS
- EQUIPMENT DEMOS
- HUNDREDS OF MANUFACTURERS SUPPORTED
- LEASING/MONTHLY RENTALS
- ITAR CERTIFIED SECURE ASSET SOLUTIONS

SERVICE CENTER REPAIRS

Experienced engineers and technicians on staff at our full-service, in-house repair center

*InstraView*SM REMOTE INSPECTION

Remotely inspect equipment before purchasing with our interactive website at www.instraview.com ↗

WE BUY USED EQUIPMENT

Sell your excess, underutilized, and idle used equipment. We also offer credit for buy-backs and trade-ins. www.artisanng.com/WeBuyEquipment ↗

LOOKING FOR MORE INFORMATION?

Visit us on the web at www.artisanng.com ↗ for more information on price quotations, drivers, technical specifications, manuals, and documentation

Contact us: (888) 88-SOURCE | sales@artisanng.com | www.artisanng.com