



Artisan Technology Group is your source for quality new and certified-used/pre-owned equipment

- FAST SHIPPING AND DELIVERY
- TENS OF THOUSANDS OF IN-STOCK ITEMS
- EQUIPMENT DEMOS
- HUNDREDS OF MANUFACTURERS SUPPORTED
- LEASING/MONTHLY RENTALS
- ITAR CERTIFIED SECURE ASSET SOLUTIONS

SERVICE CENTER REPAIRS

Experienced engineers and technicians on staff at our full-service, in-house repair center

*InstraView*SM REMOTE INSPECTION

Remotely inspect equipment before purchasing with our interactive website at www.instraview.com ↗

WE BUY USED EQUIPMENT

Sell your excess, underutilized, and idle used equipment. We also offer credit for buy-backs and trade-ins. www.artisanng.com/WeBuyEquipment ↗

LOOKING FOR MORE INFORMATION?

Visit us on the web at www.artisanng.com ↗ for more information on price quotations, drivers, technical specifications, manuals, and documentation

Contact us: (888) 88-SOURCE | sales@artisanng.com | www.artisanng.com



M-64 FIXED STYLE IN-LINE FLOW SWITCH INSTRUCTION MANUAL



www.malema.com



Caution

Product must be maintained and installed in strict accordance with the National Electrical Code and MALEMA Product catalog and instruction bulletin. Failure to observe this warning could result in serious injuries or damages.

An appropriate explosion-proof enclosure or intrinsically safe interface device must be used for hazardous area applications involving such things as (but not limited to) ignitable mixtures, Combustible dust and flammable materials. Pressure and temperature limitations shown on individual catalog pages and drawings for the specified flow switches must not be exceeded. These pressure and temperature takes into consideration possible system surge pressure/temperatures and their frequencies.

Selection of materials for compatibility with the media is critical to the life and operation of MALEMA flow switches. Take care in the proper selection of materials of construction; particularly wetted materials Life expectancy of switch contacts varies with applications. Contact MALEMA if life cycle testing is required.

Ambient temperature changes do affect switch set points. Since the specific gravity of a liquid can vary with temperature. Flow switches have been designed to resist shock and vibration; however, shock and vibration should be minimized. Liquid media containing particulate and/or debris should be filtered to ensure proper operation of MALEMA products. Electrical entries and mounting points may require liquid/vapor sealing if located in an enclosed tank.

Flow switches must not be field repaired. Physical damage sustained by the product may render it unserviceable



OPERATION:

The operating principle is based on a magnetic piston which responds only to the motion of fluids within the line, not to static or system pressures. In the presence of fluid flow, controlled movement of the piston actuates an external hermetically sealed reed switch. This switch can be used to actuate audible or visual alarms, as well as relays, or other controls.

INSTALLATION:

For proper operation fluid flow must be in the inlet port and out the outlet port. Switch may be universally mounted in any orientation.

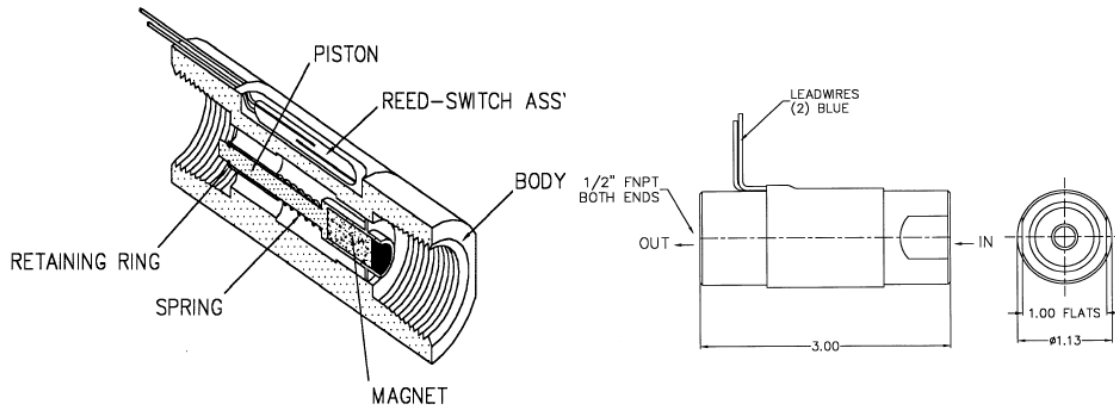
CLEAN OUT:

PROCEDURE TO CLEAN FLOW SWITCH

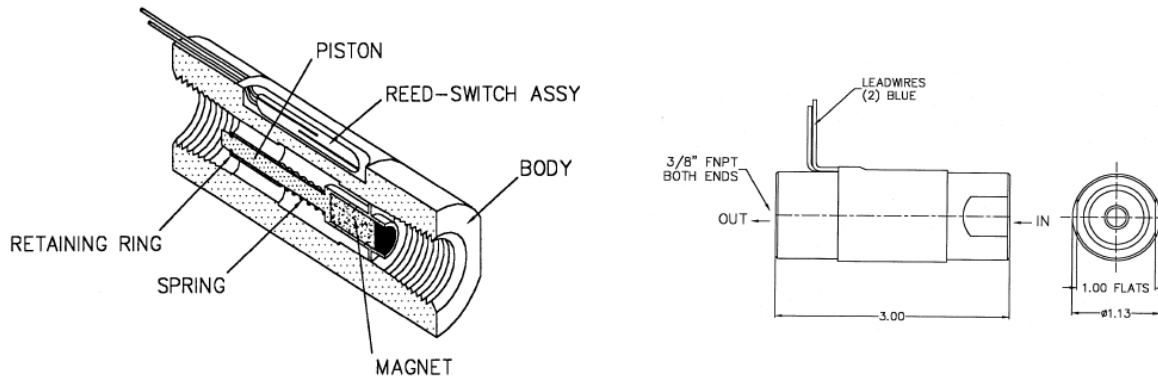
1. Remove the retaining ring using pliers.
2. Remove the piston and the spring by inverting.
3. Clean bore first with Trichloroethene and then with compressed air.
4. Replace the piston and the spring in the same orientation as before.
5. Replace retaining ring using pliers.

Cut Away and Dimensional Drawings

*Illustrated is the M-64 Model with 1/2" FNPT.**



*Illustrated is the M-64 Model with 3/8" FNPT.**



**These dimensions apply to Brass and 316SS Units.*

IMPORTANT NOTE: *OD for PVC and TEFLON Units is 1.5" OD*



Electrical

- SPST: DC Resistive: 10 Watts, AC Resistive: 10 VA.
 Switching Current: 0.5A.
 Carrying Current: 1.2A.
- SPDT: DC Resistive: 3 Watts, AC Resistive: 3 VA.
 Switching Current: 0.25A.
 Carrying Current: 0.5A.

COLOR CODE:

- ORANGE: NORMALLY OPEN
 YELLOW: NORMALLY CLOSED
 GREEN: COMMON

Standard Specifications

Material	Max. Pressure (psi)	Max. Temperature (C°/F)	Wetted Parts
Brass	1,500	149/300	Brass, 316SS, Epoxy
316SS	2,500	149/300	316SS, Epoxy
PVC	200	60/140	PVC, 316SS
PTFE	200	60/140	PTFE, PTFE Coated Stainless Spring



Ordering Information

Standard Part Numbering											
M	-	Model	-	Material	Port	Switch	-		Piston Type	-	
M	-	64	-	S	3	1	-	0	0	0	XXX
		64		B - Brass S - 316SS V - PVC T - PTFE	3 - 3/8" 4 - 1/2"	1 - SPST N.O. 2 - SPST N.C. 3 - SPDT		Future Option	0 - 316SS/Epoxy 1 - PTFE 2 - all 316SS	Future Option	Unique numbering from 001 to 999 to identify settings and other custom requirements.

CONTACT:

Corporate Headquarters
1060 S Rogers Circle Boca Roton, FL 33487
P: (561) 995-0595 F: (561) 995-0622

West Coast Headquarters
2225 Martin Avenue Suite I Santa Clara, CA 95050
P: (408) 970-3419 F: (408) 970-3426

Asia Headquarters
29 Woodlands Industrial Park E1
Northtech Unit #02-06
Singapore 757716
P: (65) 6482-3533 F: (65) 6484-4231

www.malema.com



Artisan Technology Group is your source for quality new and certified-used/pre-owned equipment

- FAST SHIPPING AND DELIVERY
- TENS OF THOUSANDS OF IN-STOCK ITEMS
- EQUIPMENT DEMOS
- HUNDREDS OF MANUFACTURERS SUPPORTED
- LEASING/MONTHLY RENTALS
- ITAR CERTIFIED SECURE ASSET SOLUTIONS

SERVICE CENTER REPAIRS

Experienced engineers and technicians on staff at our full-service, in-house repair center

*InstraView*SM REMOTE INSPECTION

Remotely inspect equipment before purchasing with our interactive website at www.instraview.com ↗

WE BUY USED EQUIPMENT

Sell your excess, underutilized, and idle used equipment. We also offer credit for buy-backs and trade-ins. www.artisanng.com/WeBuyEquipment ↗

LOOKING FOR MORE INFORMATION?

Visit us on the web at www.artisanng.com ↗ for more information on price quotations, drivers, technical specifications, manuals, and documentation

Contact us: (888) 88-SOURCE | sales@artisanng.com | www.artisanng.com