



## Artisan Technology Group is your source for quality new and certified-used/pre-owned equipment

- FAST SHIPPING AND DELIVERY
- TENS OF THOUSANDS OF IN-STOCK ITEMS
- EQUIPMENT DEMOS
- HUNDREDS OF MANUFACTURERS SUPPORTED
- LEASING/MONTHLY RENTALS
- ITAR CERTIFIED SECURE ASSET SOLUTIONS

### SERVICE CENTER REPAIRS

Experienced engineers and technicians on staff at our full-service, in-house repair center

### *InstraView*<sup>SM</sup> REMOTE INSPECTION

Remotely inspect equipment before purchasing with our interactive website at [www.instraview.com](http://www.instraview.com) ↗

### WE BUY USED EQUIPMENT

Sell your excess, underutilized, and idle used equipment. We also offer credit for buy-backs and trade-ins. [www.artisanng.com/WeBuyEquipment](http://www.artisanng.com/WeBuyEquipment) ↗

### LOOKING FOR MORE INFORMATION?

Visit us on the web at [www.artisanng.com](http://www.artisanng.com) ↗ for more information on price quotations, drivers, technical specifications, manuals, and documentation

**Contact us:** (888) 88-SOURCE | [sales@artisanng.com](mailto:sales@artisanng.com) | [www.artisanng.com](http://www.artisanng.com)

# ZUP SERIES

## COMMUNICATION TEST SET UP

using Hyper Terminal ( Windows ) software

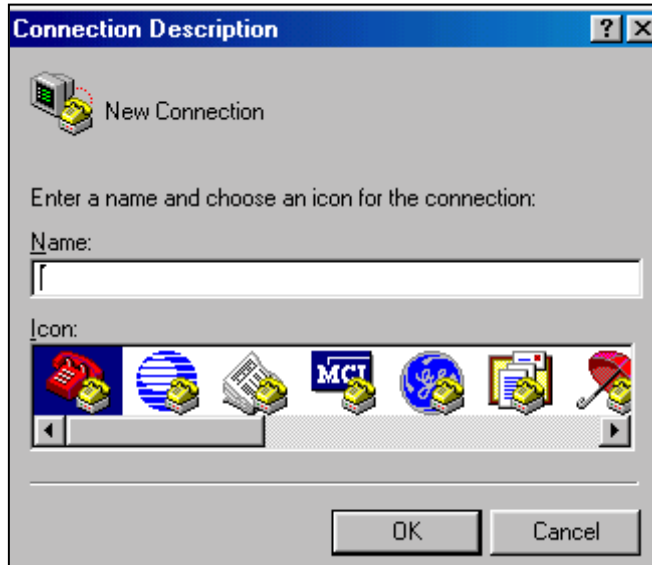
DWG No: IA549-04-03	
Prepared	
Checked	
Approved	

# TEST PROGRAM: ZUP COMMUNICATION VIA HYPERTERMINAL

- 1 **Equipment:** PC with HyperTerminal of Windows, ZUP Power Supply,  
RS232 cable ( NC401 -for PC with DB-9 connector, NC403 -for PC with DB-25 connector )

## 2 PC Set Up:

- 2.1 Open HyperTerminal ----> New Connection
- 2.2 Enter name

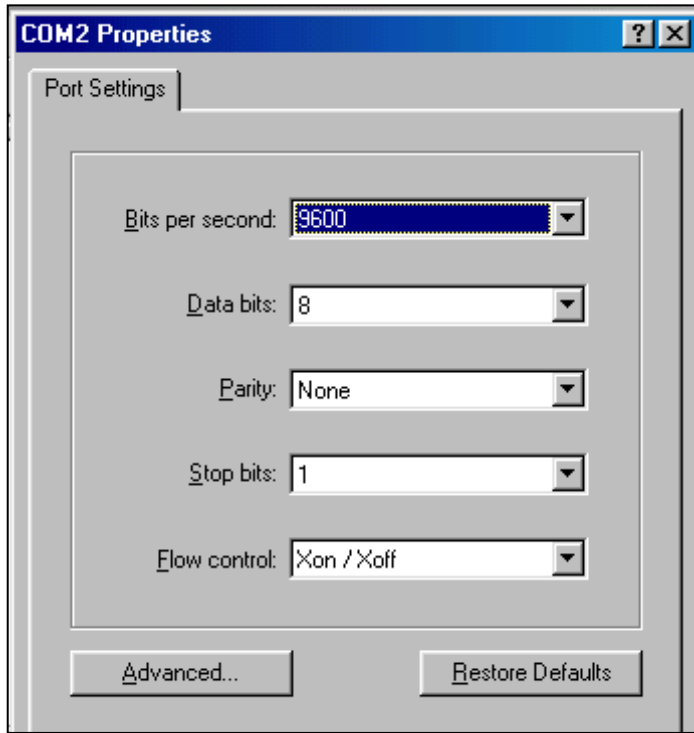


- 2.3 Connect using : Direct to Com1 or Com2



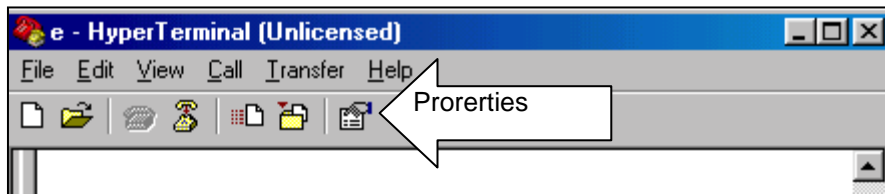
## 2.4 Port Setting

Set the Port Properties as follows:

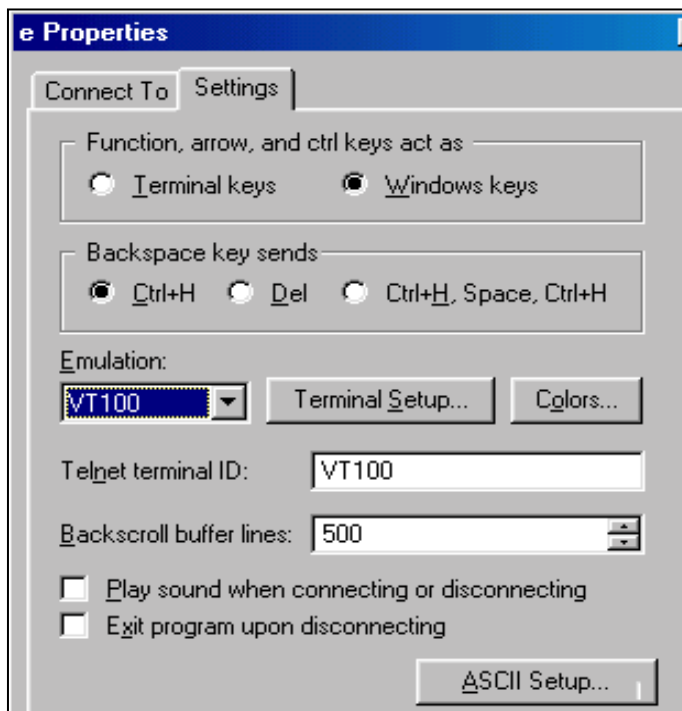


## 2.5 Properties setup

2.5.1 Open Properties:

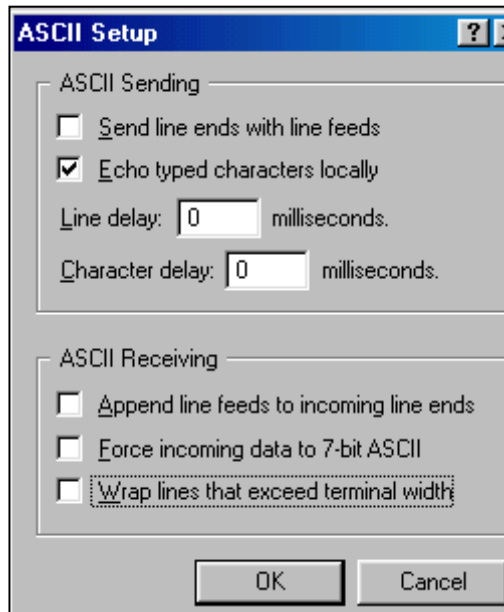


2.5.2 Set the Parameters as shown in the properties window



IA549-04-03/2

2.6 ASCII Setup: set the parameters as shown in the ASCII Setup window



Press [ Caps Lock ] for capital letters

### 3 ZUP Set Up

- 3.1 Connect ZUP Power Supply RS232/485 IN (Instruction Manual Fig4-2, item 2) to the PC using RS232 cable (NC401 or NC403)
- 3.2 Set via the front panel: Baud Rate 9600, RS232/RS485 to RS232, address 01
- 3.3 Set Rem/Local to Rem (Rem LED illuminate)
- 3.4 The Zup and PC setting is completed

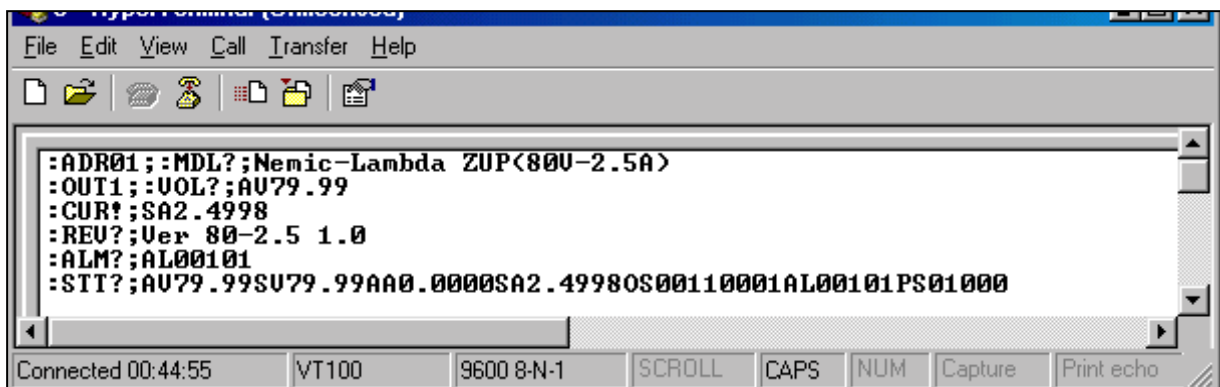
### 4 COMMUNICATION TEST

- 4.1 Model identification  
 PC: write :ADR01::MDL?;  
 ZUP response: Nemic-Lambda<XXV-XXA>

- 4.2 Command check

PC: write :OUT1; :VOLn; :CURn; ( for n see Instruction manual, par. 5.5.3 )

The ZUP output should turn on and display will show the output voltage and actual output



**ATTENTION:** Don't use Backspace, Enter, Ctrl and Alt keys.  
 If you made an error during writing, type only ; and continue

IA549-04-03/3



## Artisan Technology Group is your source for quality new and certified-used/pre-owned equipment

- FAST SHIPPING AND DELIVERY
- TENS OF THOUSANDS OF IN-STOCK ITEMS
- EQUIPMENT DEMOS
- HUNDREDS OF MANUFACTURERS SUPPORTED
- LEASING/MONTHLY RENTALS
- ITAR CERTIFIED SECURE ASSET SOLUTIONS

### SERVICE CENTER REPAIRS

Experienced engineers and technicians on staff at our full-service, in-house repair center

### *InstraView*<sup>SM</sup> REMOTE INSPECTION

Remotely inspect equipment before purchasing with our interactive website at [www.instraview.com](http://www.instraview.com) ↗

### WE BUY USED EQUIPMENT

Sell your excess, underutilized, and idle used equipment. We also offer credit for buy-backs and trade-ins. [www.artisanng.com/WeBuyEquipment](http://www.artisanng.com/WeBuyEquipment) ↗

### LOOKING FOR MORE INFORMATION?

Visit us on the web at [www.artisanng.com](http://www.artisanng.com) ↗ for more information on price quotations, drivers, technical specifications, manuals, and documentation

**Contact us:** (888) 88-SOURCE | [sales@artisanng.com](mailto:sales@artisanng.com) | [www.artisanng.com](http://www.artisanng.com)