



Artisan Technology Group is your source for quality new and certified-used/pre-owned equipment

- FAST SHIPPING AND DELIVERY
- TENS OF THOUSANDS OF IN-STOCK ITEMS
- EQUIPMENT DEMOS
- HUNDREDS OF MANUFACTURERS SUPPORTED
- LEASING/MONTHLY RENTALS
- ITAR CERTIFIED SECURE ASSET SOLUTIONS

SERVICE CENTER REPAIRS

Experienced engineers and technicians on staff at our full-service, in-house repair center

*InstraView*SM REMOTE INSPECTION

Remotely inspect equipment before purchasing with our interactive website at www.instraview.com ↗

WE BUY USED EQUIPMENT

Sell your excess, underutilized, and idle used equipment. We also offer credit for buy-backs and trade-ins. www.artisanng.com/WeBuyEquipment ↗

LOOKING FOR MORE INFORMATION?

Visit us on the web at www.artisanng.com ↗ for more information on price quotations, drivers, technical specifications, manuals, and documentation

Contact us: (888) 88-SOURCE | sales@artisanng.com | www.artisanng.com

IEEE 1394 Interfaces for PCI and PXI/CompactPCI

NI PCI-8252, NI PXI-8252

- 3 IEEE-1394a (FireWire) ports
- OHCI v1.0 compliant
- Up to 400 Mb/s of data transfer
- Up to 12 W of power for 1394 devices
- Ideal for image acquisition from IEEE-1394 cameras

Operating Systems

- Windows 2000/XP/Me/98

Recommended Software

- LabVIEW
- Measurement Studio

Driver Software

- NI-IMAQ for IEEE 1394



Overview

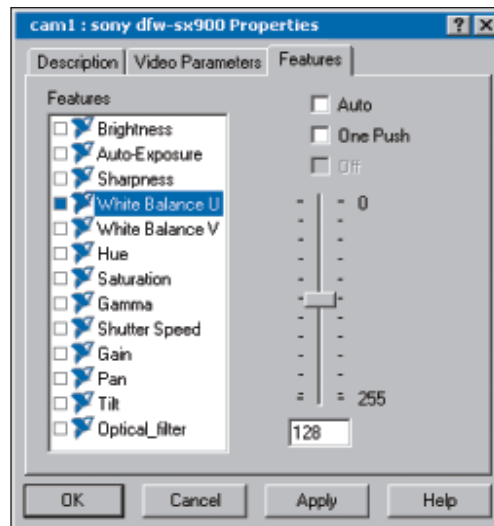
The National Instruments 8252 devices are OHCI compliant IEEE 1394a interfaces that run natively in Windows 2000/XP/Me/98. The IEEE 1394a standard offers up to 400 Mb/s bandwidth. Three direct-connect IEEE 1394 ports are provided, but more 1394 devices can be added with the addition of IEEE 1394 hubs. An important application of these devices is collection of images from IEEE 1394 cameras.

NI-IMAQ for IEEE 1394

NI-IMAQ for IEEE 1394 offers a mobile, easy-to-use solution for acquiring images from IEEE 1394 cameras. The driver software integrates with NI Measurement & Automation Explorer, so you can easily configure your camera. You can also quickly set up your system by connecting a FireWire camera to your computer and immediately begin acquiring images. With a set of easy-to-use programs, you can quickly create applications in LabVIEW or Measurement Studio, by creating VIs or directly accessing the C library functions.

NI-IMAQ for IEEE 1394 cameras is compatible with IIDC-compliant cameras that output noncompressed video data. You can connect a maximum of 16 cameras up to your system and acquire

from each one. Advanced functionality includes the ability to query the camera for on board parameters and programmatic parameter changing on the fly.



IEEE 1394 Interfaces for PCI and PXI/CompactPCI

Specifications

Performance IEEE 1394a-1995, S100, S200, S400 transfer rates
(Actual 1394 transfer rates are system dependent)

Power Requirements (maximum)

PCI	
Supply Voltage (V)	Supply Current (mA)
5	7
12	60

PXI	
Supply Voltage (V)	Supply Current
3.3	315 mA
5	1.8 A
12	400 mA

Physical

Dimensions
 PCI 7.2 by 12 cm (2.8 by 4.8 in.)
 PXI 10.0 by 16.0 cm (3.9 by 6.3 in.)
 IO Connectors Standard IEEE 1394 Female, 6-pin (3)

Operating Environment

Ambient Temperature 0 to 55°C
 Relative Humidity 10 to 90%, noncondensing

1394 Bus Power

PCI
 Total power available 12 W
 Maximum power per port 9.6 W
 PXI
 Total power available 12 W
 Maximum power per port 12 W

Storage Environment – PCI

Ambient Temperature 0 to 55°C
 Relative Humidity 10 to 90%, noncondensing

Storage Environment – PXI

Ambient Temperature -20 to 70°C
 Relative Humidity 5 to 95%, noncondensing

For safety and EMC/EMI compliance specifications, please refer to the Declaration of Conformity at ni.com.

Ordering Information

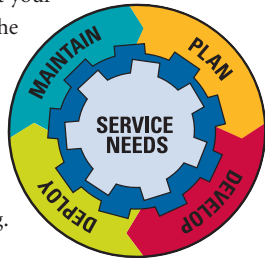
NI PCI-8252 and NI-IMAQ for IEEE-1394779024-01
 NI PXI-8252778925-01
 NI PXI-8252 and NI-IMAQ for IEEE-1394778926-01
 NI-IMAQ for IEEE 1394..... 778413-01

BUY ONLINE!

Visit ni.com/info and enter `pxi8252`.

NI Services and Support

NI has the services and support to meet your needs around the globe and through the application life cycle – from planning and development through deployment and ongoing maintenance. We offer services and service levels to meet customer requirements in research, design, validation, and manufacturing. Visit ni.com/services.



Training and Certification

NI training is the fastest, most certain route to productivity with our products. NI training can shorten your learning curve, save development time, and reduce maintenance costs over the application life cycle. We schedule instructor-led courses in cities worldwide, or we can hold a course at your facility. We also offer a professional certification program that identifies individuals who have high levels of skill and knowledge on using NI products. Visit ni.com/training.

Professional Services

Our Professional Services Team is comprised of NI applications engineers, NI Consulting Services, and a worldwide NI Alliance Partner Program of more than 600 independent consultants and integrators. Services range from start-up assistance to turnkey system integration. Visit ni.com/alliance.



OEM Support

We offer design-in consulting and product integration assistance if you want to use our products for OEM applications. For information about special pricing and services for OEM customers, visit ni.com/oem.

Local Sales and Technical Support

In offices worldwide, our staff is local to the country, giving you access to engineers who speak your language. NI delivers industry-leading technical support through online knowledge bases, our applications engineers, and access to 14,000 measurement and automation professionals within NI Developer Exchange forums. Find immediate answers to your questions at ni.com/support.

We also offer service programs that provide automatic upgrades to your application development environment and higher levels of technical support. Visit ni.com/ssp.

Hardware Services NI Factory Installation Services

NI Factory Installation Services (FIS) is the fastest and easiest way to use your PXI or PXI/SCXI™ combination systems right out of the box. Trained NI technicians install the software and hardware and configure the system to your specifications. NI extends the standard warranty by one year on hardware components (controllers, chassis, modules) purchased with FIS. To use FIS, simply configure your system online with ni.com/pxiadvisor.

Calibration Services

NI recognizes the need to maintain properly calibrated devices for high-accuracy measurements. We provide manual calibration procedures, services to recalibrate your products, and automated calibration software specifically designed for use by metrology laboratories. Visit ni.com/calibration.

Repair and Extended Warranty

NI provides complete repair services for our products. Express repair and advance replacement services are also available. We offer extended warranties to help you meet project life-cycle requirements. Visit ni.com/services.



ni.com • (800) 433-3488

National Instruments • Tel: (512) 683-0100 • Fax: (512) 683-9300 • info@ni.com

© 2004 National Instruments Corporation. All rights reserved. LabVIEW, Measurement Studio, NI-IMAQ, and ni.com are trademarks of National Instruments. Other product and company names listed are trademarks or trade names of their respective companies.

Artisan Technology Group - Quality Instrumentation ... Guaranteed | (888) 88-SOURCE | www.artisanTG.com



Artisan Technology Group is your source for quality new and certified-used/pre-owned equipment

- FAST SHIPPING AND DELIVERY
- TENS OF THOUSANDS OF IN-STOCK ITEMS
- EQUIPMENT DEMOS
- HUNDREDS OF MANUFACTURERS SUPPORTED
- LEASING/MONTHLY RENTALS
- ITAR CERTIFIED SECURE ASSET SOLUTIONS

SERVICE CENTER REPAIRS

Experienced engineers and technicians on staff at our full-service, in-house repair center

*InstraView*SM REMOTE INSPECTION

Remotely inspect equipment before purchasing with our interactive website at www.instraview.com ↗

WE BUY USED EQUIPMENT

Sell your excess, underutilized, and idle used equipment. We also offer credit for buy-backs and trade-ins. www.artisanng.com/WeBuyEquipment ↗

LOOKING FOR MORE INFORMATION?

Visit us on the web at www.artisanng.com ↗ for more information on price quotations, drivers, technical specifications, manuals, and documentation

Contact us: (888) 88-SOURCE | sales@artisanng.com | www.artisanng.com