

# Getting Started with PXI-8231 for Windows

This document describes how to install the PXI-8231 hardware and driver software for Windows.

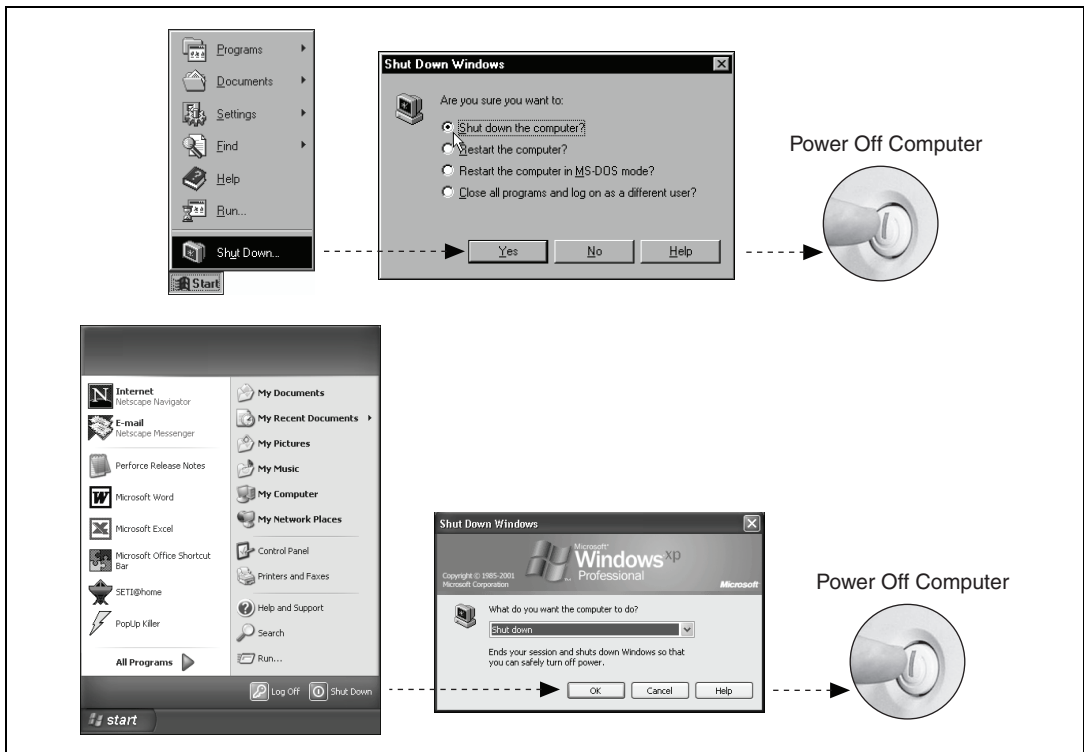


**Note** If your system does not have a CD-ROM drive, refer to the [Alternative Driver Installation Options for the PXI-8231](#) section.

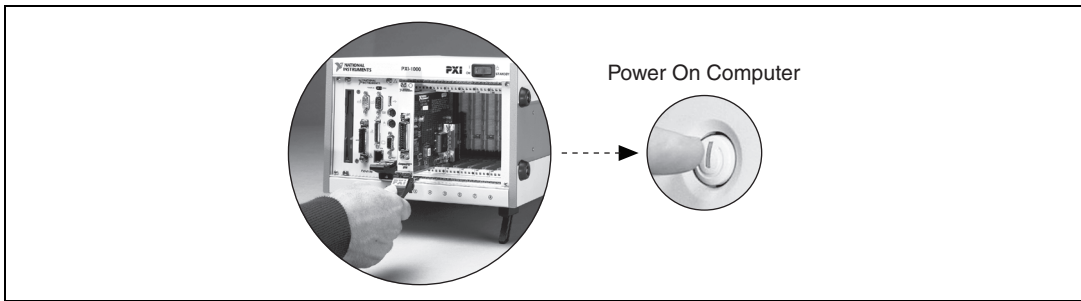
## PXI-8231 for Windows Vista/XP/2000

Follow these steps to install the PXI-8231 hardware and driver software for Windows Vista/XP/2000.

1. Shut down and power off the computer.



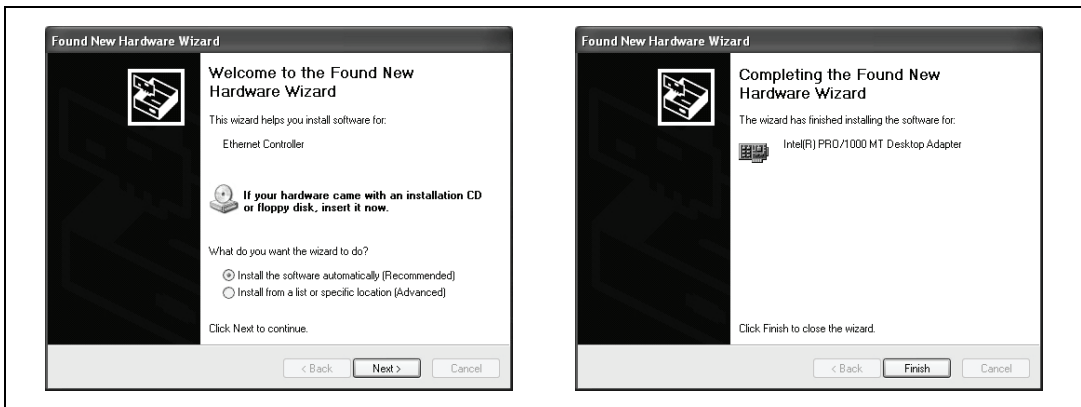
2. Install the hardware and cables. Power on the computer.



3. Install the Windows Vista/XP/2000 Ethernet drivers.

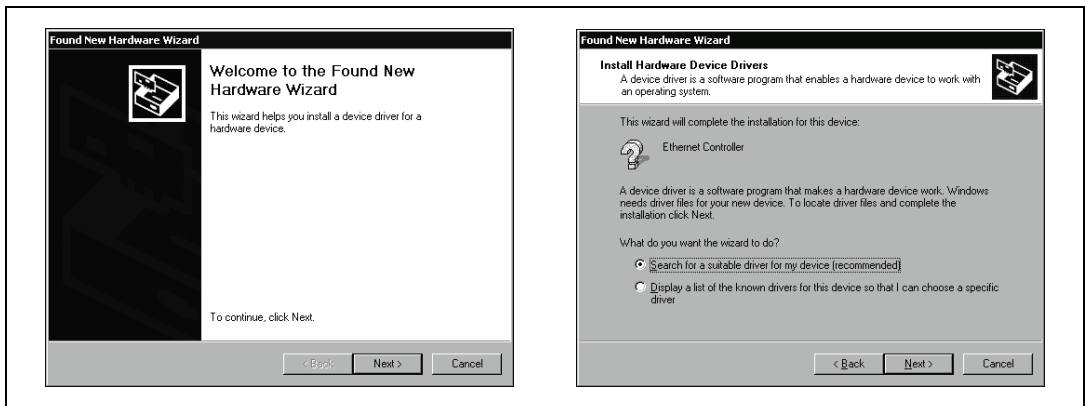
**(Windows Vista)** Windows automatically detects the new hardware and installs the Ethernet driver.

**(Windows XP)** Windows automatically detects the new hardware and displays a **Found New Hardware Wizard** window. Insert the *PCI/PXI Gigabit Ethernet Adapters* CD-ROM and follow the directions presented. Choose the **Recommended** option when given a choice and click **Next**.

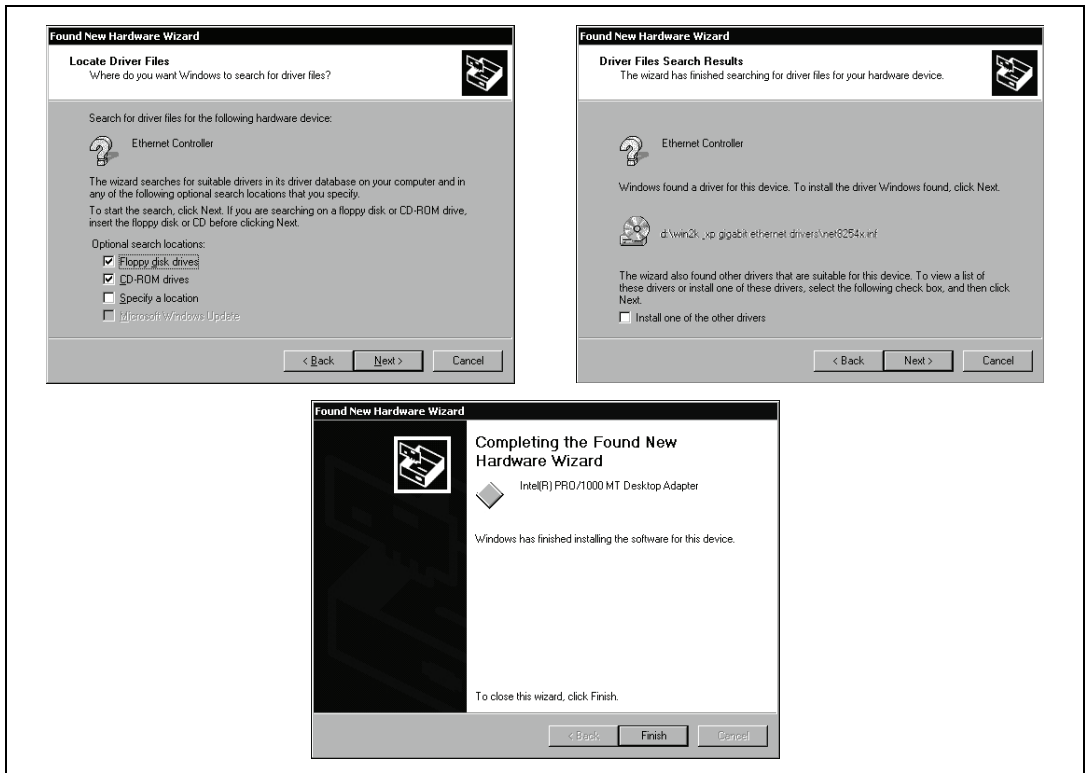


**Tip** If Windows displays an **Insert Disk** dialog box indicating it cannot locate a file on the *Intel PRO Adapter* CD-ROM, insert the *PCI/PXI Gigabit Ethernet Adapters* CD-ROM and tell Windows to copy files from the `win2kXP` directory of the CD-ROM drive (typically `d:\Win2kXP\`).

**(Windows 2000)** Windows automatically detects the new hardware and displays a **Found New Hardware Wizard** window. Insert the *PCI/PXI Gigabit Ethernet Adapters* CD-ROM and follow the directions presented. Choose the **Recommended** option when given a choice.



If Windows asks where to search for a new driver, make sure the box next to **CD-ROM Drive** is checked and click **Next**.

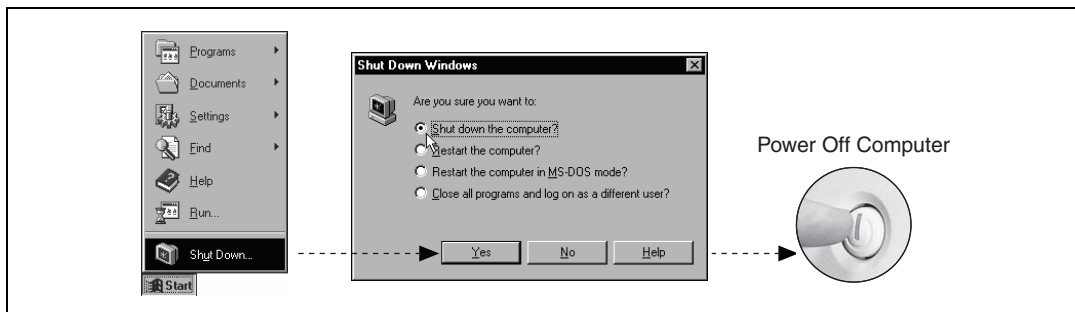


For help with cabling instructions and troubleshooting tips, refer to the *PCI/PXI Ethernet Adapters Installation Guide* on the *PCI/PXI Gigabit Ethernet Adapters CD-ROM*.

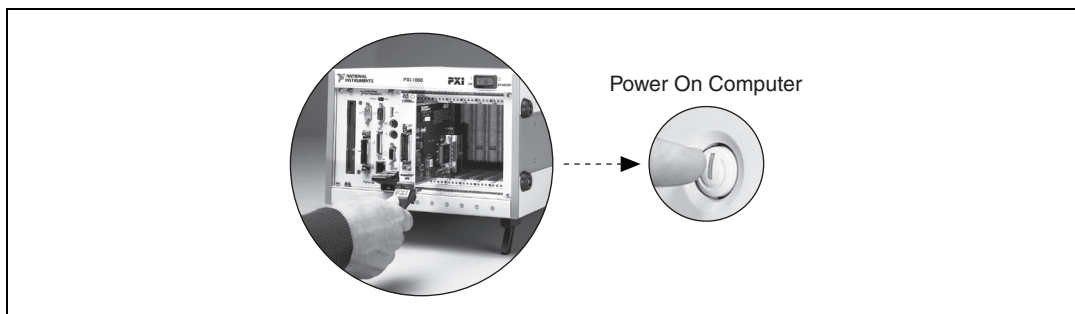
# PXI-8231 for Windows Me/98

Follow these steps to install the PXI-8231 hardware and driver software for Windows Me/98.

1. Shut down and power off the computer.



2. Install the hardware and cables. Power on the computer.



3. Install the PCI-PCI bridge driver.

Windows automatically detects the new hardware.

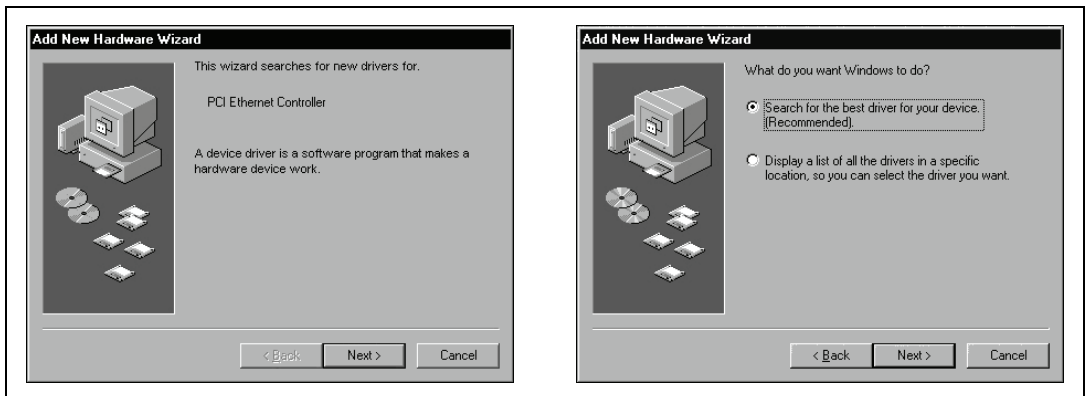
Follow the prompts in the wizard. Select the **Recommended** option when given a choice. If Windows asks where to search for a new driver, clear all checkboxes and click **Next**. If a wizard does not appear, proceed to the next step.

4. Install the Windows Me/98 Ethernet drivers.

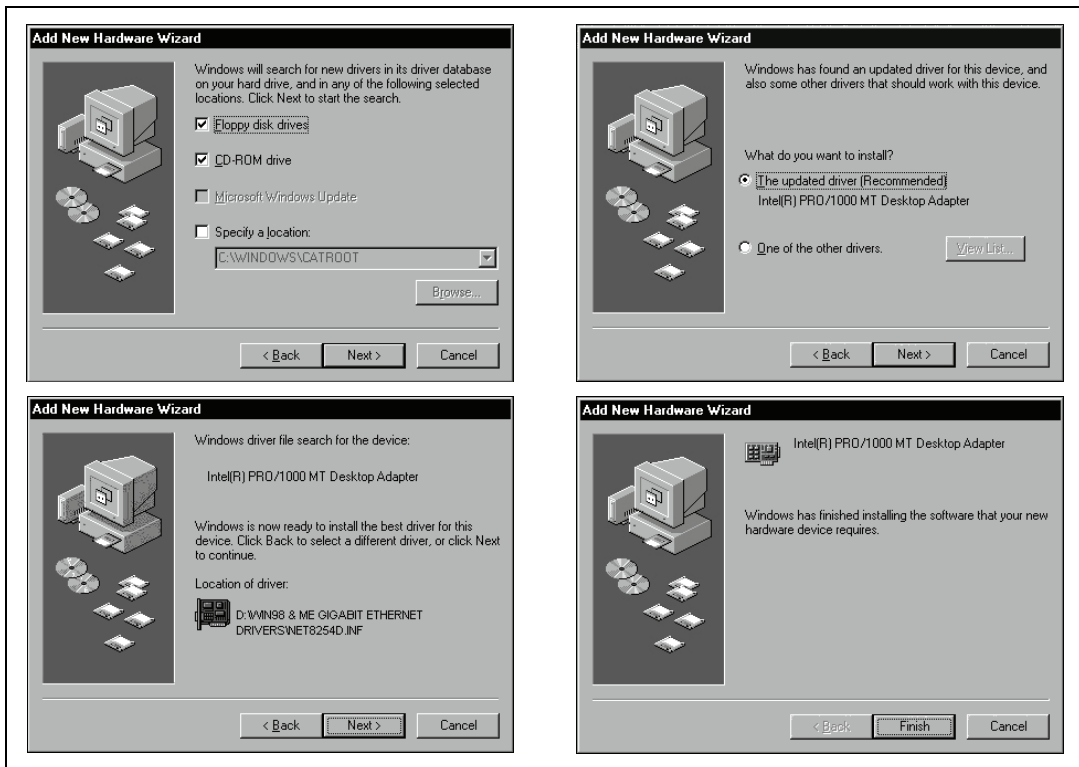
**(Windows Me)** Windows automatically detects the new hardware and displays an **Add New Hardware Wizard** window. Insert the *PCI/PXI Gigabit Ethernet Adapters* CD-ROM and follow the directions presented. Choose the **Recommended** option when given a choice and click **Next**.



**(Windows 98)** Windows automatically detects the new hardware and displays an **Add New Hardware Wizard** window. Insert the *PCI/PXI Gigabit Ethernet Adapters* CD-ROM and follow the directions presented. Choose the **Recommended** options when given a choice.



If Windows asks where to search for a new driver, make sure the box next to **CD-ROM Drive** is checked and click **Next**.



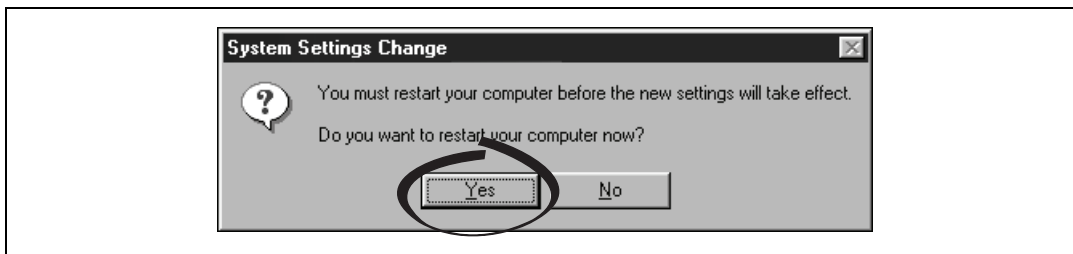
**Tip** If Windows displays a dialog box indicating it cannot locate a file on the *Intel PRO Adapter CD-ROM*, insert the *PCI/PXI Gigabit Ethernet Adapters CD-ROM* and tell Windows to copy files from the `win98ME` directory of the CD-ROM drive (typically `d:\Win98ME\`).



**Tip** If Windows displays a dialog box indicating it cannot locate a file on the Windows 98 CD-ROM, try inserting the Windows 98 installation CD-ROM and telling Windows to copy files from either the top directory or the `win98` directory of the CD-ROM drive (typically `d:\` or `d:\win98\`).

For help with cabling instructions and troubleshooting tips, refer to the *PCI/PXI Ethernet Adapters Installation Guide* on the *PCI/PXI Gigabit Ethernet Adapters CD-ROM*.

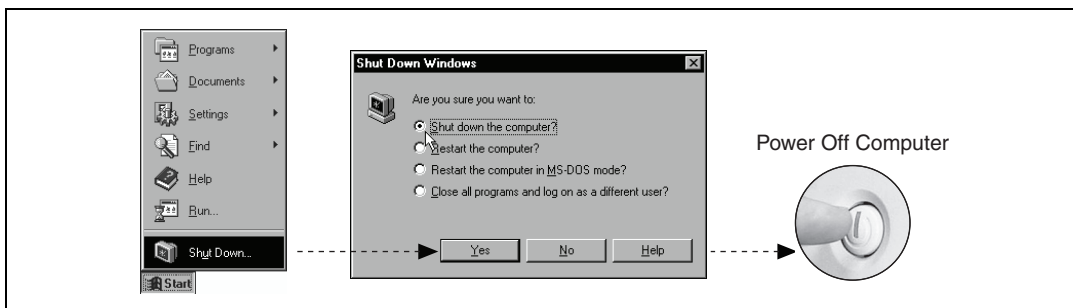
- Restart the computer and connect to your network.



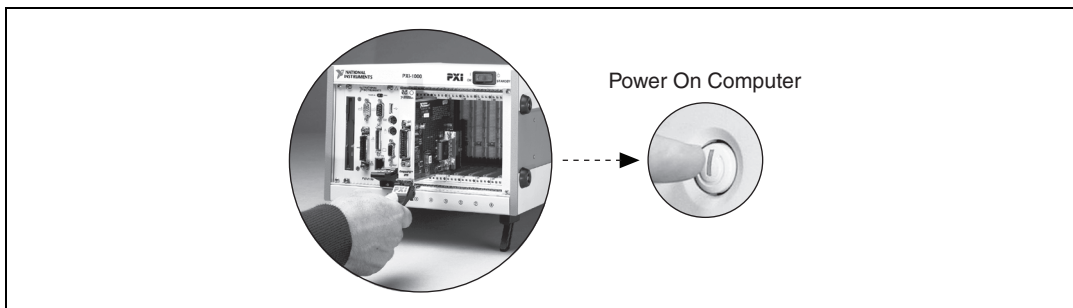
## PXI-8231 for Windows NT 4.0

Follow these steps to install the PXI-8231 hardware and driver software for Windows NT 4.0.

- Shut down and power off the computer.



- Install the hardware and cables. Power on the computer.



- Install the PCI-PCI bridge driver.

Windows automatically detects the new hardware. Follow the prompts in the wizard. Select the recommended options when given a choice. If Windows asks where to search for a new driver, clear all checkboxes and click **Next**. If a wizard does not appear, proceed to the next step.

4. Install the Windows NT 4.0 Ethernet drivers.

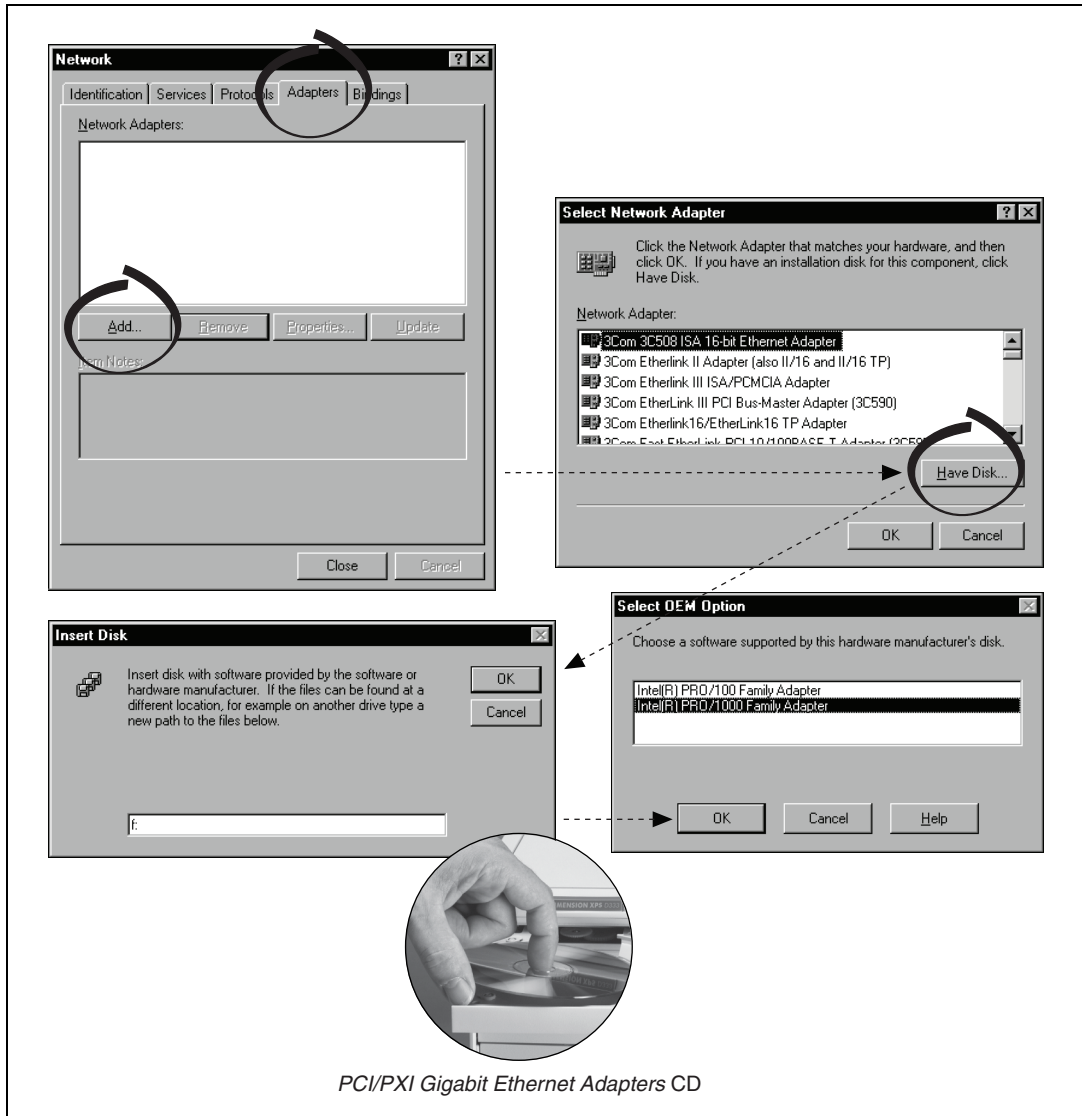
Select **Start»Settings»Control Panel»Network»Adapters** and click **Add**. Click **Have Disk** and insert the *PCI/PXI Gigabit Ethernet Adapters* CD-ROM. You may also be prompted for the original Windows NT CD-ROM.



**Note** Service Pack 5 or later is required for Ethernet driver installation. Advanced features require Service Pack 6a or later.



**Note** When installing adapters on a Windows NT system with no other adapters installed, you must install networking support.



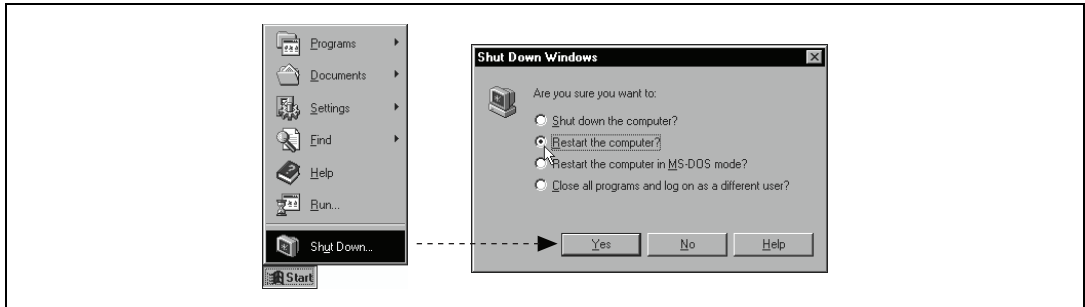




**Tip** If Windows displays an **Insert Disk** dialog box indicating it cannot locate a file on the *Intel PRO Adapter* CD-ROM, insert the *PCI/PXI Gigabit Ethernet Adapters* CD-ROM and tell Windows to copy files from the `winNT` directory of the CD-ROM drive (typically `d:\WinNT\`).

For help with cabling instructions and troubleshooting tips, refer to the *PCI/PXI Ethernet Adapters Installation Guide* on the *PCI/PXI Gigabit Ethernet Adapters* CD-ROM.

5. Restart the computer and connect to your network.



## Alternative Driver Installation Options for the PXI-8231

The installation instructions for each operating system in this document are appropriate for most users. However, if your PXI chassis does not contain a CD-ROM drive, try one of the following alternatives to load the Ethernet driver.

- If you have an existing Ethernet connection in your PXI chassis, download the Intel Ethernet driver from the National Instruments Web site. Access the **Drivers and Updates** page at [ni.com/download/](http://ni.com/download/).
- Connect an external CD-ROM, such as a USB CD-ROM, and load the Ethernet driver directly from the *PCI/PXI Gigabit Ethernet Drivers* CD-ROM.
- Follow these steps to use another computer with a CD-ROM to copy the Ethernet driver onto a 3.5 in. floppy disk:
  1. Open a DOS command window.
  2. Change to the directory on the CD-ROM that matches the OS you want to use with the diskette.
  3. Change to the `\MAKEDISK` directory.
  4. Depending on your OS choice, type `MAKE2KXP`, `MAKENT`, or `MAKE98ME` and follow the onscreen instructions.

# Where to Go for Support

---

The National Instruments Web site is your complete resource for technical support. At [ni.com/support](http://ni.com/support) you have access to everything from troubleshooting and application development self-help resources to email and phone assistance from NI Application Engineers.

National Instruments corporate headquarters is located at 11500 North Mopac Expressway, Austin, Texas, 78759-3504. National Instruments also has offices located around the world to help address your support needs. For telephone support in the United States, create your service request at [ni.com/support](http://ni.com/support) and follow the calling instructions or dial 512 795 8248. For telephone support outside the United States, contact your local branch office:

Australia 1800 300 800, Austria 43 662 457990-0, Belgium 32 (0) 2 757 0020,  
Brazil 55 11 3262 3599, Canada 800 433 3488, China 86 21 5050 9800,  
Czech Republic 420 224 235 774, Denmark 45 45 76 26 00, Finland 385 (0) 9 725 72511,  
France 01 57 66 24 24, Germany 49 89 7413130, India 91 80 41190000, Israel 972 3 6393737,  
Italy 39 02 413091, Japan 81 3 5472 2970, Korea 82 02 3451 3400, Lebanon 961 (0) 1 33 28 28,  
Malaysia 1800 887710, Mexico 01 800 010 0793, Netherlands 31 (0) 348 433 466,  
New Zealand 0800 553 322, Norway 47 (0) 66 90 76 60, Poland 48 22 3390150,  
Portugal 351 210 311 210, Russia 7 495 783 6851, Singapore 1800 226 5886,  
Slovenia 386 3 425 42 00, South Africa 27 0 11 805 8197, Spain 34 91 640 0085,  
Sweden 46 (0) 8 587 895 00, Switzerland 41 56 2005151, Taiwan 886 02 2377 2222,  
Thailand 662 278 6777, Turkey 90 212 279 3031, United Kingdom 44 (0) 1635 523545

National Instruments, NI, ni.com, and LabVIEW are trademarks of National Instruments Corporation. Refer to the *Terms of Use* section on [ni.com/legal](http://ni.com/legal) for more information about National Instruments trademarks. Other product and company names mentioned herein are trademarks or trade names of their respective companies. For patents covering National Instruments products, refer to the appropriate location: **Help»Patents** in your software, the `patents.txt` file on your CD, or [ni.com/patents](http://ni.com/patents).